

Product datasheet for **MG226679**

Ranbp2 (NM_011240) Mouse Tagged ORF Clone

Product data:

Product Type:	Expression Plasmids
Product Name:	Ranbp2 (NM_011240) Mouse Tagged ORF Clone
Tag:	TurboGFP
Symbol:	Ranbp2
Synonyms:	A430087B05Rik; AI256741; NUP358
Mammalian Cell Selection:	Neomycin
Vector:	pCMV6-AC-GFP (PS100010)
E. coli Selection:	Ampicillin (100 ug/mL)
ORF Nucleotide Sequence:	>MG226679 representing NM_011240 Red=Cloning site Blue=ORF Green=Tags(s)

TTTTGTAATACGACTCACTATAGGGCGGCCGGAATTCGTCGACTGGATCCGGTACCGAGGAGATCTGCC
GCC**CGATCGC**C

ATGAGGCGTAGCAAGGCCGACGTGGAGCGGTACATCGCCTCGGTGCAGGGCTCCGCCCGTCGCCCGAG
AGAAGTCAATGAAAGGATTCTATTTGCAAAGCTGACTATGAAGCTAAAGAATATGATCTTGCTAAAA
ATACATTTCTACGTATATTAATGTGCAAGAGAGACCCTAAAGCCACAGATTTTGGGTCTTCTTTAT
GAAGTCGAAGAAAATATAGACAAAGCTGTAGAATGTTATAAGCGTTCAGTGAATTAACCCAACGCAA
AAGATCTTGTGTTGAAGATTGCAGAATTGCTTTGTA AAAATGATGTGACTGATGGAAGAGCAAAACTG
GGTTGAAAGAGCAGCCAACTTTCCAGGAAGTCCTGCCATTTATAAGTTAAAGGAACAACCTTTAGAT
TGTAAGGTGAAGATGGATGGAATAAACTTTTGACTTGATTCAGTCAGAACTTTATGCAAGACCTGATG
ATATTCATGTAATATCCGACTAGTAGACTTTACCGTTCAAATAAAAAGATTGAAGGATGCTGTGGCCCA
CTGCCATGAGGCAGACAGGAACACAGCTTTACGTTCAAGTTTAGAATGGAATTTATGTGTTGTACAGACT
CTTAAGGAATATCTGGAGTCTCTGCAGTGTGGATTCTGATAAAAAGTACTTGGAGAGCAACCAATAAG
ACTTACTTCTAGCCTATGCTAACCTTATGCTACTTACACTTTCCACCAGAGATGTGCAGGAAGGTAGAGA
ACTATTGAAAGCTTTGATAGTCTCTCAGTCTGTGAAGTCTTCTGTGGGTGGAATGATGAGCTATCA
GCTACTTTCTAGAAACAAAAGGACATTTCTACATGCATGTTGGTCTCTGCTTTTGAAGATGGGTCAGC
AGAGTGACATCCAGTGGCGAGCTTTCTGAGCTGGCTGCATTGTGCTATCTTGTAGCATTTCAGGTTCC
CAGACCAAGGTTAAATTAATAAAGGAGAAGCTGGACAAAATCTCCTGGAAACGATGGCCACGATCGC
CTTAGCCAGTCAGGGCACATGTTGTTAACTTAAGTCGTGGCAAGCAAGACTTTCTAAAGGAAGTTGTGG
AATCTTTTGCTAACAAAAGCGCCAGTCTGCTCTCTGTGATGCTCTGTTTTCCAGTCAGTCATCCAAGGA
GAGATCTTTCTGGGAATGATGATATTGGAACTTGTATGGACAAGTCCAGACCCCTGATGACTTGGCT
AGATATGATACTGGTCCGTTTCGAGCACATAATGGTAGTCTTCCAGCCTTACCTGGCTTGGCTTACAAT
GGAATTCAGTGTCTACTTTACCAGCAATTCGAAAATGGTAAAACAGCTCTTCCACCATTGCTCAGGA
GACGTCAGGCTTGAACAAATGCACCTGAATCAATCTGTATTTAGATCTTGAAGTATTCTTACTTGA



[View online »](#)

GTTATATATACCAGTCACTTACAATTAAGGAGAAGTGTAAATTCACCACACTTCTATCAACCATTGT
GTTTGCCACTTCTGTGTGCAGACAGCTTTGTACAGAGAGACAGAAGACGTGGTGGGATGCAGTTTGTAC
TCTGATTACCCGAAAGGCGCTACCTGGAACCTCAGCAAAATTGCGACTTCTAGTTCAACGTGAAATAAAC
AGTCTGAGAGGCCAGGAAAGCACGGCCTTCAACCTGCTCTGCTTGTGCATTGGGCCAGAGTCTTCAA
AAACAGGCAGCAGTCTTAATCTTTTTATGATCAACGGGAATACATAGGCAGAAGTGTTCATTATTGGAG
GAAAGTTTTACCATTGTTGAAGATGATCAGAAAGAAGAATAGTATTCTGAACCTATTGATCCTCTGTTT
AAACATTTCCATAGTGTGGATATTCAGGCATCTGAAATTTGGTGAATATGAAGAAGATGCACACATACTT
TTGCTATATTGGATGCTGTTAATGGAAATATAGAAGATGCTATGACTGCTTTTGAATCTATTAATAATGT
AGTTTTCTATTGGAATCTTGCACTGATTTTCCACAGGAAAGCAGAAGACATTGAAATGATGCCTTGTCT
CCTGAAGAACAAGAAGAATGCAAAAATTATCTGAGAAAGACTAGGGACTACCTGATAAGGATTTTAGATG
ATAGTGATTCAAATACTTCTGTGGTTCAGAAATGGCTGTTCCCCTTGAGTCTGTAAAAGAGATGCTGAA
CTCAGTTATGCAGGAACCTGAAGACTACAGTGAAGGAGTACTCTTTATAAAAAATGGTGTGCGGAAGT
GCTGATTGAGTAAAGCATTCAACACCATCTCCTACCAATATTCTCTATCACCAGTAAAAGTTACA
AGTATTCTCAAAGACACCACCTCGATGGGCAGAAGATCAAAATCTTTACTGAAATGATCTGCCAGCA
AGTAGAGGCCATTAAGAAAGAGATGCAGGAATTGAAGCTAAATAGCAATAACTCTGCATCCCCTCATCGC
TGGCCCGCAGAGCCTTACGGACAAGACCAGCTCTGACGGATATCAGGGCTCACAACTTTTCACGGGG
CTCCACTAACAGTTGCAACTACTGGCCATCAGTATATTATAGTCAGTCACTGCATATAACTCCCAGTA
TCTTCTCAGACCAGCTGTAATGTAACCTCCACCAAGGGTCCAGTTTATGGCATGAATAGGCTTCCACCC
CAACAACATATTTATGCATATTCACAACAGATGCACACACCACAGTGCAAAAGTTCATCTGCTTGTATGT
TCTCTCAGGAGATGTATGGTCTCCCTTGCCTTTTGTAGTCTCTGCAACAGGAATTTATCACCATAGGGG
TGATGATTATTTAATTACAATGTTCAACAGACAAGCACAATCCACCTTTGCCAGAACCAGGGTATTTT
ACAAAGCCTCCACTTGTAGTCCAGCTTCAAGGTCAGCAGAATCAAAGGTTATAGAATTTGAAAAATCCA
ATTTCTGTCAGCCATGCAGGGTGAAGTAAAGGCCACCTTTGACAACACCAGCACAACAACACAGCC
AACTCCCTTTAAATTTAACTCAAATTTCAAATCAAATGATGGCGACTTACATTTTTCATCACACAGGTA
GTGGCCAGCCTCCTTCAACAGCTTATAGCAATAGTGAAGTCTTCTAGGCTTCTGACTTCAGATAAGC
CTTTACAAGGAGATGGCTATAGTGGACTAAAGCCAATATCTGGCCAAGCTAGTGGGTCTCGGAATACATT
CAGTTTTGGAAGCAAAAATACACTTACAGAAAACATGGGCCAAAATCAGCAGAAGAATTTTGGTTTTTTCAT
CGCAGTGATGACATGTTTGTCTTTCACGGTCCAGGGAAGTCTGTATTTACAACAGCTGCTCCGAGCTGG
CAAATAAAAGTCATGAGACAGATGGAGGAAGTGTCTATGGGGATGAGGAGGATGATGGCCCTCACTTTGA
GCCTGTGGTACCTCTTCTGACAAGATAGAAGTAAAACTGGCGAGGAAGATGAAGAAGAATTTCTTTTGC
AATCGTGCAAAGTTGTTCCGTTTTGATGGTGAATCCAAGAATGGAAGGAACGTGGGATAGGCAATGTAA
AAATACTAAGGCATAAAACATCTGGTAAAATTCGCCTTCTGATGAGACGAGAGCAAGTATTAAGATCTG
TGCAAAATCATTACATAAGCCAGATATGAAACTGACGCCAAATGCTGGCTCAGATAGATCTTTTGTATGG
CATGCCCTTGATTATGCAGATGAATTTGCCAAAACCAGAACAGCTTGAATTAGATTCAAAACTCCTGAGG
AAGCAGCACTATTTAAGTGTAAATTTGAAGAGGCCAGAACATTTTAAAAGCCTTAGGAACAAACACATC
TACAGCACAAATCATACTCTTAGAATTTGTAAGGAGTCTGCAACTCAGGATAACAAGGATATTTGCAAA
GCTGATGGTGGAACTTGAATTTGAATTCAGATTGTAAGAAGGAAGGGCCTTACTGGAATTTGAACA
GCTGCTCCTTTAAGAATGCTGCAACTGCTAAGAAATGTGTATCATGCCAGAATACAACCCAAACCAGTAA
CAAAGAGCTCCTAGGTCCTCCATTAGTTGAAAAATGGCTTTGCTCCTAAAACCTGGCCTGAAAAATGCTCAA
GATCGATTTGCAACAATGACTGCAAAATAAAGAAGGCCATTGGGACTGCAGTGTGTTTTAGTAAGAATG
AACCCACCGTCTCTAGGTGCATTGCATGTCAGAACACAAAGTCTGCGTCTTCTGTTTGTCAAACCTCTTT
CAAATTTGGTCAGGGAGATCTTCTAAGTCTGTTGACAGTGATTTAGATCTGTTTTTTCTAAAAAGAA
GGTCAGTGGGAATGCAGTGTATGCCTAGTCCGAAATGAAAGAAGCGCTAAAAATGTGTTGCTTGTGAGA
ACCCAGGAAAACAGTTCAAAGAATGGCATTGTAGTTTGTGCTCGTGAAAAATGAAGCACATGCTATAAA
ATGTGTTGCTTGAATAATCCTGTTACACCAAGTTTATCTACTGCACCTCCCTCTTTAAGTTTGGTACC
TCAGAGATGAGTAAGCCTTTCAGGATTGGATTTGAGGGTATGTTCCGCAAGAAAGAAGGACAGTGGGACT
GTAGCTTGTGTTTTGTCCGAAATGAAGCCAGTGTACTACTGTATTGCTTGTGAGTATCCAATAAGCA
GAATCAGCCTACATCTTGTGTATCAGCTCTGCCTCTTTCAGAGACAAGCAGGTCTCAAAGAGTGGATTT
GAAGGCTTATCCCAAAAAGGAAGGAGAGTGGGAGTGTGCTGTTTGTCTGTACAAAATGAGAGCTCTT
CCCTAAAATGTGTGGCTTGTGAAGCCTCAAGCCAACCTATAAGCCTCATGAAGCTCCTTCAGCTTTTAC
AGTGGGCTCAAAGTCACAGTCAAATGAATCTGCAGGAAGTCAAGTGGGAACAGAATTCAAAAGTAACTTT
CCAGAAAAGAATTTAAGTTGGCATTTCAGAGCAGAAATTTAAATTTGGGCATGTGGATCAAGAAAAAA

CACCTTCCTTTGCCTTTCAGGGTGGCTCTAATACAGAATTTAAGTCAATCAAGGATGGATTTAGTTTTG
 CATTCTGTATCTGCTGATGGGTTAAATTTGGCATTTCAGGAAAAGGAAATCAAGAGAAAAAGAGTGAA
 AAACATCTTGAAAATGACCCTAGTTTCCAAGCTCATGATACTAGTGGTCAGAAGAATGGTAGTGGTGG
 TCTTTGGTCAGACAAGCAGCACCTTTACCTTTGCAGATCTTGCAAAGTCAACATCAAGAGAAGGGTTTCA
 ATTTGGCAAGAAAGACCCTAATTTTAAAGGGATTTTCAGGTGCAGGAGAAAAATTTCTCGTCCAAAAGC
 GGCAAAGTGGCTGAGAAAGCAAATACGCTTCTGATCTCGAGAAAAGATGATGATGCATATAAGACTGAGG
 ACAGTGATGACATCCATTTTGGCCAGTAGTGCAGATGCCAGAAAAGTGGAACTAGTAACAGGAGAAGA
 AGATGAAAAAGTTTTGTATTACAAAGGGTGAATTTATTAGATTTGATGCTGAGATAAGTCAAGTGGAAA
 GAAAGGGGTTTGGGAATTTAAAAATTCTCAAAAATGAAGTCAATGGTAAACTGAGAATGCTGATGCGAA
 GAGAACAAGTGCTAAAAGTTTGTGCCAATCATTGGATAACCACTACAATGAACCTGAAGCCTCTCTCGGG
 GTCAGATAGAGCATGGATGTGGCTAGCTAGTATTCTCCGATGGTGACGCGAAACTGGAACAACCTGGCT
 GCAAAGTTTAAAACGCCAGAGCTAGCTGAAGAATCAAGCAGAAAATTTGAGGAGTGTCAACGCTTCTCT
 TAGACATTCACCTTCAGACACCCATAAACTTGTAGATACTGGCAGGGCTGCTAAATTAACACAGAGAGC
 TGAGGAAATGAAGAGCGGCTGAAAGATTTCAAAACCTTTTTGACAAATGATCAAGTAAAGTCCCGAT
 GAAGAGAAATGCAAGTTCAGGTGCAGATGCTCCAGTGCATCAGACACCACAGCCAAGCAAAATCCTGATA
 ACACCGGGCCTGCCTTAGAATGGGATAACTATGACTTACGGGAGGACGCCTTGGATGACAGTGTACGAG
 CAGCTCAGTTCATGCTTCTCCATTGGCAAGCAGCCCTGTGCGGAAAAACCTTCTCCGCTTTGGTGTAGTCC
 ACTACAGGATTTAACTTCAGTTTTAAATCTGCTCTGAGTCCATCTAAGTCTCCAGCCAAATGAACCAGA
 GTGGAGCTTCAGTTGGCACTGATGAGGAGTCTGATGTTACTCAAGAAGAAGAGAGAGATGGACAGTACTT
 TGAACCTGTTGTTCCCTTACCTGATCTAGTTGAAGTATCCAGTGGTGAGGAAAAATGAACAAGTGTTTTT
 AGTCACAGAGCAAACTTACAGATACGATAAAGATGTTGGCCAGTGGAAAGAAAGAGGCATTGGAGATA
 TAAAGATCTTACAGAATTATGATAATAAACAAGTTCGCATCGTGATGAGAAGGGACCAGGTATTAACCT
 TTGTGCCAATCACAGAATAACTCCAGATATGACTTTGCAAATGAAAGGGACTGAAAGATGTGGGTG
 TGGACTGCATGTGATTTTGCAGATGGAGAAAGAAAAATAGAACATTTTGGCTGTTCTGTTTTAACTACAGG
 ATGTTGCAGACTCATTTAAGAAAAATTTTGTGAAAGCAAAAAACAGCCCAAGAAAAAGATTATTGATAAC
 ACCTCATGTTTCTCATCTGAGCACCCCTAGAGAGTCCACATGTGGCAAAATTTGCTATTGCTGTTTTAGAA
 GAAACCACAAGAGAAAGGACAGATTTAACTCAGGGAGATGAAGTAAATAGATACAACCTCAGAAGCTGGAG
 AAACATCTAGCACTTCTGAAACAACACCAAAAGCAGTAGTTTCTCCTCCTAAGTTTGTATTTGGCTCAGA
 ATCTGTTAAAAGCATTTTTAGTAGTGAAAAATCCAAGCCATTTGCATTTGGCAACAGTTCAGCCACTGGT
 TCTTTGTTGGATTTAGTTTTAATGCACCTTTGAAAAATAGCAATAGTGAATGACTTCCAGAGTCCAGA
 GTGGATCTGAAGGAAAAGTAAAACCCGACAAATGTGAGCTGCCACAGAATCTGACATCAAGCAATCTTC
 TGATGGCAAAGTCAAAAATCTCAGTGCCTTTTCAAAGAGAACTTTCAACTAGTTATACATTTAAAACA
 CCAGAAAAGGCACAAGAGAAGAGCAAACTGAAGATCTCCCTCAGATAATGATATTCTCATTGTGTATG
 AACTCACTCCCACCCCTGAGCAGAAAGCCTGGCAGAGAACTTCTGCTTCTTCAACTTCTTTTGTTA
 TAAGAATAGGCCTGGCTATGTTAGTGAAGAAGAGGAGGATGATGAAGATTATGAAATGGCTGTCAAGAAG
 CTTAATGGAAAATCTATCTGGATGACTCAGAAAAACCTTGAAGAAGAACTAGCAGATAATGACAAGG
 AATGTGTTATTGTTTGGGAAAAGAAGCCAAACAGTTGAAGAAGAGCAAAAGCAGATACTTTAAAGCTTCC
 ACCTACATTTTCTGTGGAGTCTGCAGTACTGATGAGGACAATGAAATGGGAGGATTTTTCAGTCA
 GAGCTTCGAAAAGTCTGTGAAGCTCAGAAATCCAGAAATGAGAAAGTACTGATAGAGTTGGTATTGAGC
 ATATAGGTGAGACTGAAGTAACAAACCCTGTTGGCTGTAAGTCTGAAGAACCTGATTCTGATACCAAACA
 CAGTAGCTCATCCCTGTTTCTGGGACTATGGACAAACCTGTGCGATTTGTCCACTAGAAAAGAACTGAC
 ATGGAATTCCAAAGCAAAGGGGAAAAACAAGCCTGTTTTGTTGGATTTGGAAGTGGTACAGGCCTGTCT
 TTGACAGCTTGGCTTCAAGTAATCTGGAGATTTTGTCTTTGGCTCTAAAGATAAAAAATTTCCAGTGGGC
 AAATACTGGAGCAGCTGTGTTTGAACACAGACAACAAGTAAAGGTGGCAGGATGAAGACGGCAGTGT
 GAAGATGTAGTTCATAATGAGGACATCCACTTTGAACCTATAGTCTCCTTACCAGAGGTAGAAGTGAAT
 CTGGAGAGGAAGATGAAGAAGTTTTGTTCAAAGAGAGAGCCAACTTTATAGGTGGACAGAGATGTCAG
 TCAGTGGAAAGGAGAGAGGATTGGAGATATAAAGATTCTCTGCCATACAATGAAGAAGTATTATCGGATC
 CTAAATGAGAAGAGACCAGGTTTTTAAAGTGTGTGCAAACCATGTTATTACCAAAGCCATGGAATTAAC
 CTTTAAATGTTTCAAACAATGCTTTAGTCTGGACTGCCTCCGATTATGCTGATGGAGAAGCAAAAGTAGA
 ACAGCTTCAGTGTGATTTAAGACAAAGGAAATGACTGAGAGTTTTAAGAAAAATTTGAAGAATGTCAA
 CAAAATAATAAAAACCTCCAGAATGGACATACATCCCTTGCAGCAGAAATTAACAAGGACACCAATCCTG
 TGGTGTTTTTGATGTTTGTGCGGATGGTGAACCTCTAGGACGGATAATCATGGAATTTTTTCAAATAT

```
CGTTCCTCAAACCTGCTGAGAACTTCAGAGCATTATGCACTGGAGAGAAGGGCTTTGGTTTTAAGAACTCC  
ATTTTTCACCGAGTAGTTCAGATTTTATTTGCCAAGGGGGAGATATTACCAAATACAATGGAACAGGTG  
GACAGTCCATTTATGGAGATAAATTTGACGATGAAAACCTTTGATTTGAAACACACTGGTCCTGGCTTACT  
ATCCATGGCCAATTACGGCCAGAATACCAACAGTTCTCAATTTTTATAACTGAAGAAAGCAGAACAT  
TTGGACTTTAAGCATGTAGTATTTGGGTTTGTAAAGGATGGCATGGATACTGTGAGAAAGATTGAATCAT  
TTGGTTCTCCTAAAGGTCTGTTAGTAGAAGAATTTGTATCACAGAATGTGGACAGCTA
```

ACGCGTACGCGGCCGCTCGAG - GFP Tag - GTTTAA

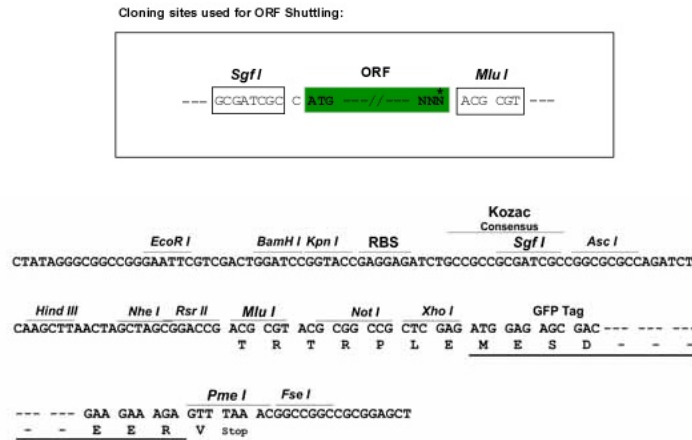
Protein Sequence: >MG226679 representing NM_011240
 Red=Cloning site Green=Tags(s)

MRRSKADVERYIASVQGSAPSPREKSMKGFYFAKLYYEAKYDLAKKYISTYINVQERDPKAHRFLGLLY
 EVEENIDKAVECYKRSVELNPTQKDLVLKIAELLCKNDVTDGRAKYWVERAAKLFGSPAIIYKLEQLLD
 CKGEDGWNKFLDLIQSELYARPDDIHVNIRLVELYRSNKRLKDAVAHCHEADRNTALRSSLEWNLVQVQT
 LKEYLESLLQCLDSKSTWRATNKDLLLLAYANMLLTLSTRDVQEGRELLESFDSALQSVKSSVGGNDELS
 ATFLETKGHFYMHVGSLLKMGQQSDIQWRALSELAALCYLVAQVPRPKVKLIKGEAGQNLLETMAHDR
 LSQSGHMLLNLSRGKQDFLKEVVESEFANKSGQSALCDALFSSQSSKERSFLGNDDIGNLDGQVPDPPDLA
 RYDTGAVRAHNGSLQHLTWLGLQWNSLSTLPAIRKWLKQLFHHLPPQETSRLLETNAPESICILDLEVFLLG
 VIYTSHLQLKEKCNHSHSYQPLCLPLPVCRLCTERQKTWWDVAVCTLIHRKALPGTSAKLRLLVQREIN
 SLRGQEKHGLQPALLVHWAQSLQKTGSSLSNSFYDQREYIGRSVHYWRKVLPLLMIRKKNKSIPEPIDPLF
 KHFFHSVDIQASEIGEYEEAHIITFAILDAVNGNIEDAMTAFESIKNVVSYWNLALIFHRKAEDIENDALS
 PEEQECKNYLRKTRDYLRILDDSDSNTSVVQKLPVPLESVKEMLNSVMQELEDYSEGGLTYKNGCWRS
 ADSELKHSTPSPTKYSLSPSKSYKYSKTPPRWAEDQNSLLKMICQQVEAIKKEMQELKLNNSNASPHR
 WPAEYPGQDPADPGYQGSQTFHGAPLTVATTGPSVYYSQSPAYNSQYLLRPAANVTPTKGPVYGMNRLPP
 QQHIYAYSQQMHTPPVQSSSACMFSQEMYGPPLRFESPATGILSPRGDDYFNYNVQQTSTNPPLPEPGYF
 TKPPLVAHASRSAESKVIIEFGKSNFVQPMQGEVIRPPLTPAHTTQPTPFKFNFSKNSNDGDFTFSSPQV
 VAQPPSTAYSNSSELLGLLTSKPLQGDGYSGLKPISSGQASGSRNTFSFGSKNTLTENMGPNQKNGFGH
 RSDDMFAFHGPGKSVFTTAASELANKSHETDGGSAHGDEEDDGPHFEPVPLPKIEVKTGEEDEEFFC
 NRAKLFRFDGESKEWKERGIGNVKILRHKTSKIRLLMRREQVLKICANHYISPMKLTNAGSDRSFVW
 HALDYADELPKPEQLAIRFKTPEEAALFKCKFEEAQNILKALGTNTSTAPNHTLRIVKESATQDNKDICK
 ADGGNLFEEFQIVKKEGPHYWNCNSCSFKNAATAKKCVSQNTNPTSNKELLPPLVENGFAPKTGLENAQ
 DRFATMTANKEGHWDSCVCLVRNEPTVSRCIACQNTKSASSFVQTSFKFGQGDLPKSVSDSDFRSVFSKKE
 GQWECSVCLVRNERSAKKCVACENPGKQFKEWHCSLCSVKNEAHAIKCVACNNPVTPLSTAPPSFKFGT
 SEMSKPFRIIGFEGMFAKKEGQWDCSLCFVRNEASATHCIAQYPNKQNPQTSVCSAPASSETSRSPKSGF
 EGLFPKKEGEWECAVCSVQNESSSLKCVACEASKPTHKPHEAPSAFTVGSKSQSNEAGSQQVTEFKSNF
 PEKNFKVGISEQKFKFGHVDQEKTPSFAFGGSNTEFKSIKDGFSFCIPVSADGFKFGIQEKGQEKSE
 KHLNDPQFAHDTSGQKNGSGVVFQGTSTFTFADLAKSTSREGFQFGKKDPNFKGFSGAGEKLFSSQS
 GKVAEKANTSSDLEKDDDAYKTEDSDDIHFEPVQMPKVELVTGEEDEKVLYSQRVKLFRFDAEISQWK
 ERGLGNLKIILKNEVNGKLRMLMRREQVLKVCANHWITTTMNLKPLSGSDRAWMWLASDFSDGDAKLEQLA
 AKFKTPELAEFEKQKFEQCQRLLLDIPLQTPHKLVDTGRAAKLIQRAEEMKSGLKDFKTLTNDQVKVTD
 EENASSGADAPSASDTTAKQNPNTGPALEWDNYDLREDALDDSVSSSSVHASPLASSPVRKNLFRFGES
 TTGFNFSFKSALSPSKSPAKLNQSGASVGTDEESDVTQEEERDQGYFEPVPLPDLVEVSSGEENEQVVF
 SHRAKLYRYDKDVQWKERGIQDILQNYDNKQVRIVMRRDQVLLKCANHRITPDMTLQTMKGTERRVWV
 WTACDFADGERKIEHLAVRFLQDVADSFKKIFDEAKTAQEKDSLITPHVSHLSTPRESPCGKIAIAVLE
 ETTRERTDLTQGDEVIDTTSEAGETSSTSETTPKAVVSPKPFVFGSESVKSISSSEKSKPFAFGNSSATG
 SLFGFSFNAPLKNNSSEMTSRVQSGSEGKVKPKCELPQNSDIKQSSDGKVKNLSAFSEKNSSTSYTFKT
 PEKAQEKSKPEDLPSDNDILIVYELTPTPEQKALAEKLLLPSTFFCYKNRPGYVSEEEDEDEDYEMAVKK
 LNGKLYLDDSEKPLEENLADNDKECVIWEKKPTVEERAKADTLKLPPTFFCGVCSDTDEDNGNDEDFQS
 ELRKVCEAQKSQNEKVTDRVGIIEHIGETEVTNPVGCKSEEPDSDTKHSSSSPVSGTMDKPVDLSTRKETD
 MEFPSKGENKPVLFGFGSGTGLSFADLASSNSGDFAFGSKDKNFQWANTGAAVFGTQTTSKGGEDEDGSD
 EDVVHNEIDIHFEPVSLPEVEVKSGEDEEVLFKERAKLYRWRDVSQWKERGIQDILKILWHTMKYYRI
 LMRRDQVFKVCANHVITKAMELKPLNVSNNALVWTASDYADGEAKVEQLAVRFTKEMTESFKKKFEECQ
 QNIKILQNGHTSLAAELSKDTPVVFVDFCADGEPLGRIMELFSNIVPQTAENFRALCTGEKGFQFKNS
 IFHRVVPDFICQGGDITKYNGTGGQSIYGDKFDDENFDLKHTGPGLLSMANYQNTNSSQFFITLKAH
 LDFKHVVFVFKDGMDEVKIESFGSPKGSVSRRICITECGQL

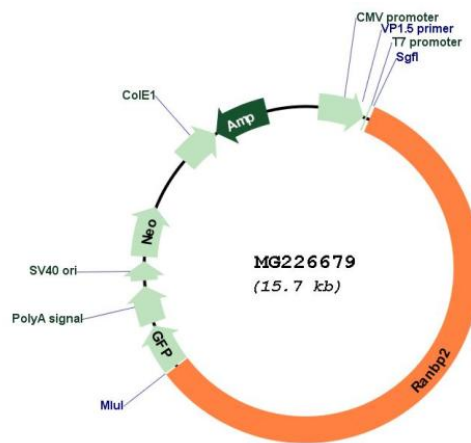
TRTRPLE - GFP Tag - V

Restriction Sites: Sgfl-MluI

Cloning Scheme:



Plasmid Map:



ACCN: NM_011240

ORF Size: 9159 bp

OTI Disclaimer: The molecular sequence of this clone aligns with the gene accession number as a point of reference only. However, individual transcript sequences of the same gene can differ through naturally occurring variations (e.g. polymorphisms), each with its own valid existence. This clone is substantially in agreement with the reference, but a complete review of all prevailing variants is recommended prior to use. [More info](#)

OTI Annotation: This clone was engineered to express the complete ORF with an expression tag. Expression varies depending on the nature of the gene.

Components: The ORF clone is ion-exchange column purified and shipped in a 2D barcoded Matrix tube containing 10ug of transfection-ready, dried plasmid DNA (reconstitute with 100 ul of water).

Reconstitution Method:	<ol style="list-style-type: none">1. Centrifuge at 5,000xg for 5min.2. Carefully open the tube and add 100ul of sterile water to dissolve the DNA.3. Close the tube and incubate for 10 minutes at room temperature.4. Briefly vortex the tube and then do a quick spin (less than 5000xg) to concentrate the liquid at the bottom.5. Store the suspended plasmid at -20°C. The DNA is stable for at least one year from date of shipping when stored at -20°C.
RefSeq:	NM_011240.3 , NP_035370.2
RefSeq Size:	9477 bp
RefSeq ORF:	9162 bp
Locus ID:	19386
UniProt ID:	Q9ERU9
Cytogenetics:	10 29.34 cM
Gene Summary:	<p>E3 SUMO-protein ligase which facilitates SUMO1 and SUMO2 conjugation by UBE2I. Involved in transport factor (Ran-GTP, karyopherin)-mediated protein import via the F-G repeat-containing domain which acts as a docking site for substrates. Binds single-stranded RNA (in vitro). May bind DNA. Component of the nuclear export pathway. Specific docking site for the nuclear export factor exportin-1 (By similarity). Sumoylates PML at 'Lys-490' which is essential for the proper assembly of PML-NB. Recruits BICD2 to the nuclear envelope and cytoplasmic stacks of nuclear pore complex known as annulate lamellae during G2 phase of cell cycle. Probable inactive PPIase with no peptidyl-prolyl cis-trans isomerase activity.[UniProtKB/Swiss-Prot Function]</p>