

Product datasheet for **MG226658**

Bcor (NM_175044) Mouse Tagged ORF Clone

Product data:

Product Type:	Expression Plasmids
Product Name:	Bcor (NM_175044) Mouse Tagged ORF Clone
Tag:	TurboGFP
Symbol:	Bcor
Synonyms:	2900008C10Rik; 5830466J11Rik; 8430401K06Rik; BcorR; D930024N20Rik; mKIAA1575
Mammalian Cell Selection:	Neomycin
Vector:	pCMV6-AC-GFP (PS100010)
E. coli Selection:	Ampicillin (100 ug/mL)
ORF Nucleotide Sequence:	>MG226658 representing NM_175044 Red=Cloning site Blue=ORF Green=Tags(s)

TTTTGTAATACGACTCACTATAGGGCGGCCGGAATTCGTCGACTGGATCCGGTACCGAGGAGATCTGCC
GCC**CGATCGCC**

ATGCTTTCTGCAACCCCTCTGTATGGGAACGTTACAGCTGGATGAACAGCGAGAGGGTCCGCATGTGTG
GAACAAGTGAAGACAGGAAAATTCCTGTGAATGATGGCGACGCTTCAAAGCCAGGCTGGAGCTGAGGGA
GGAGACTCCCCTGAGTCACAGCGTGGTGGATACCAGTGGAGCCCATCGGATCGATGGCCTGGCAGCACTG
AGCATGGACCGCACAGGCTCATCCGGGAAGGGCTCCGGTCCCTGGAAACATCGTTTATCTGGCTTGT
GTGGATTGGGCTCAGAAAAGGTCCGGGAGGCTACCCCAAGCTCTCTCAGTGGCCTTGGGTTTTCTTCGGA
AAGAAATCCAGAGATGCAATCAAACCGAATACTCCCGAGACAGTGGAGGCTTCTGCTGTCTCTGAAAA
CCCCAAATGGCTTCAGTGCTATATACAAAACACCCGCTGGGATACAAAAGAGCGCTGTAGCTACAGCGG
AAAGCTTGGGTTTGGATAGGCTGCCAGTGACAAAACAGAGCCCTCTCAACATCAATGGTGCTAGTTACCT
GCGGCTGCCCTGGGTCAACCCCTACATGGAGGGGGCCACTCCAGCCATATACCCTTTCTCGACTCGCCA
AATAAGTATCACTGAATATGTACAAGGCTTGCTACCTCAGCAGTCTACGGCTTGGCCAGCCACTGT
ATTCTCCTGTCTGCACAGTGGGAAACGCTTCTCTACCTGCCACCCCACTATGTCAACCTCAT
CCCCTCCTCTGGCTTCAACCATGAGGCTCTCCACACCTCAGCCTCTCGGCCATTCCACCTCTCGTC
CACTGCTCAGACAAAAGCCTCCCATGGAAGATGGGCGTCAACCTGGGAACCCAGTAGTCCCACAGT
ACCCCAATCCAAAACAGTAAACAGCCCGGGTGACCTCTGCCAAGGCAGTCAATAGTGGCCTGCCAGG
GGACACAGCTCTCCTGTTGCCTCCTCACCTCGGCCCTCAGCCGGTCCACCTTCCAACCTCAGCCCGCT
GCAGAGACCTACTCCGAGTTCCACAAGCACTATCCAGGATCTCCACCTCTCCCTCAGTACCCTGACGA
AGCCATACATGACAGCCAATAGCGAGTTCTCTACATCCAGGCTGTCCAATGGCAAGTACCCCAAGGCTCT
AGATGGGGGCGACTGTGCTCAATCCATGCCTGGGCACACCCGGAAGACAACGGTTCAAGACAGAAAAGAT
GGGGGCTCACCACCTCTGTTGAAAAGCAGACCGTTACCAAGATGTACAGACAAACCACTTGACCTGT
CTTCTAAAGTGGTGGATGCGGACGCTTCAAAGGTGACCACATGAAAAGATGGCTCCCACAGTCTGGT
TCACAGTCGGGCTGCAAGTGGCTTAGTGCTCTCTGGAAGTGAGATTCCGAAAGAAACACTATCTCTCCA



[View online »](#)

GGAAATGGATGTTCTATCTATAGATCAGAGATCATCAGCACTGCTCCCTCATCTGGGTGGTGCCAGGGC
 CAAGTCCTAATGAAGAGAACAATGGCAAAAGTCTGTCACTGAAAAACAAGGCTTTGGACTGGGCAATACC
 GCAACAGCGGAGTTCTCGTGTCCCGCATGGGTGGCAGATGCCGTGGTCACTAATGTTTCAGGGTCC
 GTGTCCAGCTCAGGACGCCAGCCTCTGCATCACCAGCCCCAACGCCAACGCCAATGCAGATGGCACCA
 AGACCAGCAGGAGCTCGGTGGATACCACGCCATCAGTATCCAGCATGTGGGCCAGCCCTCATCCACGCC
 TGCCAAGCACGGTGGCAGCACCAGCAGCAAGGGAGCCAAAGCCAACCCAGAACCAGCTTCAAAGCGAGT
 GAGAATGGCCTCCCGCCAACTCAATATTTCTATCTCCAATGAAGCATTAGTCCCGCAATTCCTTACATGGCAA
 ACCCTAGGAGTTACCTCCCTTACGCAGCACCAGAAGGCATCGCTCTAAGTCCCCTCTCTTTACATGGCAA
 AGGACCTGTGTATCCTCACCCAGTTTTGTACCCAATGGCAGTCTGTTTCTGGGCACCTTGCCCAAAG
 CCTGGCCTGCCTTACGGGCTGCATACGAGCAGGCCAGAATTTGTGACCTACCAAGATGCCCTGGGCTGG
 GCATGGTCCATCCATGTTGATCCACACACGCCATTGAGATCAGAAAAGAGGAGAAGCCGGAGAGACG
 CTCCCGCTCCCATGAGAGAGCCGTTATGAGGACCCAACCCTCCGTAGCCGGTTTTCTGAGATGTTGGAA
 GCTAGCAGCACCAAACTGCATCCAGAAGTCCCACTGACAAGAACCCTGAAGCCAAACTCTAGCTGGAATC
 AAGGGAAGACTGGGTCAAAGCGACAACTGGTCTACGTAGACCTTCTCCGAGAAGAAGCAGACACTAA
 AACTGATGCAGGGGCACCCAAAGCAGGCCCTGTAGCCGAGAATGTAGGTCAGGACACCGAGGCCACCAAG
 CCCTCAGCTGACCTGTGATCCAACAACGCCGTGAATTCTCCCTCAGAGAGGAGCTGGGCCGAATCA
 CTGACTTCCATGAATCTTTCACCTTTCAAACAGGCCCTCAAGCCAGCCAGTGTTCAGCTTAGGCAAGGATAG
 TGGTGCAGCAGGAACCAACAAAGAGAACCCTGGGTGTGCAGGTAGCAACTCCATTCTTGGAGACAGCTCTG
 GGCAGTGAGGGCCCTGTGTGACTTTTGGTAAAACCCAAGAGGATCCCAAACCATTTTGTGTGGCGGGT
 CCCCTCCAACATGGATGTACCCCCGCCTATACCAAAGAAGGAACTGATGAGGCCGAATCCAACGATGG
 CAAAGTTCTGAAACCAAGCCATCCAAGCTGGCAAAGAGAATTGCTAACTCGGCAGGTTATGTGGCGCAG
 CGATTCAGTGTGTCCACCAGCACTGTATGCAGATTCAGTCACTCAGCCGAGAGCAGCGGGCATTGC
 AGCGTGAATGATGCGCTTCTCAGAGTTGGAGATGAAAGAGAGAGAAGGTAGCCACCCAGCAACCAAAGA
 CTCCGAGGTGTGCAAAATTCAGCCAGCCGACTGGGAAAGGTTGAAAGGAAATCAGGAAAAGAAAGCCAAAG
 TCAGTCAACCCTGGAAGAGGCCATTGCCGACCAGAATGACAGTGAGAGATGTGAGTATAGCACTGGAACA
 AACATGATCTCTTTGAAGCCCCAGAGGACAAAGATCTTCTGTGAAAAGTATTTCTTGGAGAGGCCACC
 TGTGAGTGAGCCACCCAGTGACCAGGGGTGGTGGACACGCCACAGCCCCACCCTCCGGCTAGACAGG
 AAACGCAAACTGTCAAGTGACAGCACCCACACTGAGACCCTGTGGAAGAGCTAGCTGAGGACCCTCTGA
 AAGCCAAGCGAAGACGGATCTCCAAGATGACTGGCCTGAGAGGGAAATGACAAACAGTTCTCTAACCA
 CTTAGAAGACCCACATTGTAATGAGCTGACCAACTGAAGGTGTGCAATTAACAGGGCTCCATCCT
 AAAAAGCAACGCCACTTGTGCACCTTAGAGAACGGTGGGAGCAGCAGGTGTCCGACGCCGAGAGCAAAC
 CTGGCCGGCAAAGCAGGAAGGAAGTGGCCAGGCTGTTACGCCTGAGGTACCTCCAGGGGACTAACAT
 CACTGAAGAGAAGCCTGGCAGGAAAAGGCAGAGGCCAAAGGCAACAGAGGCTGGTCTGAAGAGTCGCTC
 AAATCCTGTGACAATGAGCAAGGCTTGCCTGTGCTCTCAGGCTCTCCGCCATGAAGAGCCTTTCATCCA
 CCAATGCAAGTGGCAAAAAGCAGACTCAGCCAAGCTGCACGCCAGCCTCAAGGCTGCCTGCCAAACAGCA
 GAAAATTAAGAAAGCCAGAAGACAGATGTGCTGTGCACAGGGGAAGACGAGGATTGCCAGGCTGCCTCC
 CCGCTGCAAAAATACACAGACAACATCGAGAAGCCATCCGGGAAGAGACTGTGCAAAACCAAGCACTTGA
 TACCTCAGGAGTCCAGGAGGAGCTTGCAGATCACAGGCGACTACTATGTGGAACAACACTGACACTAAGT
 GACTGTGCGGAGATTGAGAAAACGACCTGAGCCAGTTCGACTACGATTTGTCAACACCAGCCAAAGCAG
 GAGCCAAAGCCCTTTGACCGTCTACAACAATTGCTACCGGCCACCCAGGCCACCCAGCTGCCACGCTCAA
 ATTCTCCTCAAGAGACCACCCAGTCTCGCCCCATGCCGCCAGAAGCTCGGAGACTTATTGTCAATAAGAA
 TGCTGGGAGACCCTCCTGCAGCGGGCTGCCCGCTAGGCTATGAGGAAGTGGTCTTATATTGCCTGGAG
 AACAAAGTCTGTGATGTCAATCATCGAGACAATGCTGGCTACTGTGCTCTGCATGAAGCTTGCGCCAGG
 GATGGCTCAACATCGTGCACCCTCCTGAATATGGCGTGTGCACTGCAGTGCACAGGATGGAAC
 CAGGCCTCTGCATGATGCTGTGGAGAATGACCACTTAGAAATGTACGATTGCTTCTTCTATGGTGT
 GACCCTACTTTGGCCACATACTCAGGGAGAACCATCATGAAAATGACCCACAGTGAACCTATGGAGAAGT
 TTTTAACAGACTATTTAAATGACCTGCAGGTCGCAAGTGAAGATGACACCAGCGCGCTTGGGAGTTCTA
 TGGCAGCTCTGTGTGTAACCAGATGACGAAAGTGGGTACGATGTTTTGGCTAATCCCCAGGACCAGAA
 GACCCAGATGAGGAAGAGGATACCTATAGCGATTTGTTGAGTTTGTGAAAGCTCCCTCTTGC
 CGTGTATAACATCCAAGTGTCTGTGCTCAGGGGCCACGAAACTGGCTTCTGCTCTCAGACGTGCTCAA
 GAAGTTGAAAAATGCTCCCGGATATCCGTAGCAATTTTCCCAATCTGGAAATGTCCACATTGCAGAG
 GCGGAGTTTTACCAGAGGTCTCAACAAGTCTTGTCTCTGCCCAAAGACCTGGAAGCCTTCAATC

CTGAAAGCAAGGAGCTGTTGGATCTGGTGAATTCACCAATGAGCTCCAGACACTGCTGGGCTCCTCTGT
GGAGTGGCTCCACCCTAGTGACACGGGCCATGAAAACACTGG

ACGCGTACGCGGCCGCTCGAG - GFP Tag - GTTTAA

Protein Sequence:

>MG226658 representing NM_175044
Red=Cloning site Green=Tags(s)

MLSATPLYGNVHSMNSERVRMCGTSEDRKIPVNDGDASKARLELREETPLSHSVVDTSGAHRIDGLAAL
SMDRTGLIREGLRVPGNIVYSGLCGLGSEKGREATPSSL SGLGFSSERNPEMQFKPNTPETVEASAVSGK
PPNGFSAIYKTPPGIQKSAVATAESLGLDRPASDKQSPLNINGASYLRLPWVNPYMEGATPAIYPFLDSP
NKYSLNMYKALLPQQSYGLAQLYSPVCTSGERFLYLPHPHYVNPHIPSSLASPMRLSTPSASAAIPPLV
HCSDKSLPWKMGVNPVDSHSPHIQNSKQPRVTSKAVNSGLPGDTALLLPPSPRPSARVHLPTQPA
AETYSEFHKKHYPRISTSPSVTLTKPYMTANSEFSTSRLSNGKYPKALDGGDCAQSMGHRKTRKTTVQDRK
GGSPPLLEKQTVTKDVTDKPLDLSKVVDADASKGDHMKMAPTVLVHSRAASGLVLSGSEIPKETLSPP
GNGCSIYRSEIISTAPSSWVPGSPNEENNGKSLSLKNKALDWAIPQQRSSSCPMMGGTDVAVTVNVS
VSSSRPASASPAPANANADGKTSRSDVDTTPSVIQHVQPSSTPAKHGGSTSSKGAKANPEPSFKAS
ENGLPPTSIIFLSPNEAFRSPAIPYPRSYLPYAAPEGIALSPLSLHGKGPVYHPVLLPNGSLFPGHLAPK
PGLPYGLHTRSPEFVTYQDALGLGMVHPMLIPHTPIEITKEEKERRSRHERARYEDPTLRSRFSEM
ASSTKLHPEVPTDKNLKNSSWNQKGTGVKSDKLVYVDLLREEADTKTDAGAPKAGLVAENVGQDTEATK
PSADPVIQQRREFISLREELGRITDFHESFTFKQASSQPVFSLGKDSGAAGTNKENLGVQVATPFLETAL
GSEGPVTFGKTQEDPKPFCVGGAPPNMDVTPAYTKEGTDEAESNDGKVLKPKPSKLAKRIANSAGYVGD
RFKCVTTELYADSSQLSREQRALQRAMMRFSELEMKEREGSHPATKDSEVCKFSPADWERLKGQEKPK
SVTLEEAIADQNDSECEYSTGNKHDLFEAPEDKDLPEVEYFLERPPVSEPPSDQGVVDTPHSPTLRLDR
KRKLSGDSTHTETAVEELAEDPLKAKRRRISKDDWPEREMTNSSNHLEDPHCNELTNLKVCIELTGLHP
KKQRHLHLRERWEQQVSAAESKPGRQSRKEVAQAVQPEVTSQGTNIITEEKGRKKAEEKGNRGWSEESL
KSCDNEQGLPVLSGSPPMKSLSTNASGKKQTQPSCTPASRLPAKQKIKESQKTDVLTCTGEDEDQAA
PLQKYTDNIEKPSGKRLCKTKHLIPQESRRSLQITGDYVENTDTKMTVRRFRKRPESSDYDLSPPAKQ
EPKPFDRLQQLPATQATQLPRSNPQETTQSRPMPPEARRLIVNKNAGETLLQRAARLYEVEVLYCLE
NKVCDVNHDRNAGYCALHEACARGWLNIVRHLLLEYGADVNCQAQDGRPLHDAVENDHLEIVRLLLSYGA
DPTLATYSGRTIMKMTHSELMEKFLTDYLNLDLQGRSEDDTSGAWEFYGSVCEPDESQYDVLANPPGPE
DPDEEEDTYSDLFEFEFAESSLLPCYNIQVSAQGPRNWLLSDVLKCLKMSSRIFRSNFPNLEIVTIAE
AEFYRQVSTSLFSCPDKLEAFNPESKELLDLVEFTNELQTLGSSVEWLHPSDTGHENY

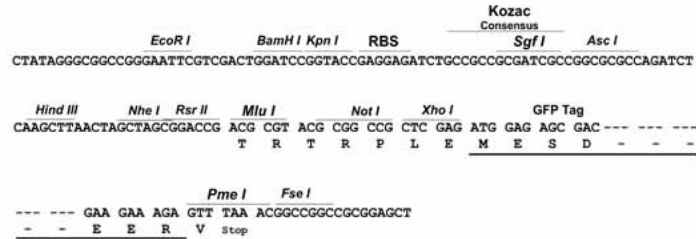
TRTRPLE - GFP Tag - V

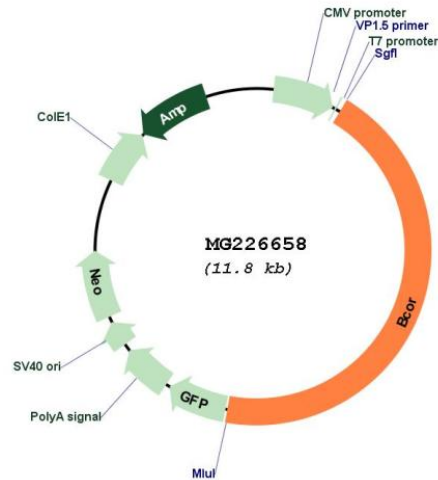
Restriction Sites:

Sgfl-MluI

Cloning Scheme:

Cloning sites used for ORF Shutting:



Plasmid Map:


ACCN: NM_175044

ORF Size: 5223 bp

OTI Disclaimer: The molecular sequence of this clone aligns with the gene accession number as a point of reference only. However, individual transcript sequences of the same gene can differ through naturally occurring variations (e.g. polymorphisms), each with its own valid existence. This clone is substantially in agreement with the reference, but a complete review of all prevailing variants is recommended prior to use. [More info](#)

OTI Annotation: This clone was engineered to express the complete ORF with an expression tag. Expression varies depending on the nature of the gene.

Components: The ORF clone is ion-exchange column purified and shipped in a 2D barcoded Matrix tube containing 10ug of transfection-ready, dried plasmid DNA (reconstitute with 100 ul of water).

Reconstitution Method:

1. Centrifuge at 5,000xg for 5min.
2. Carefully open the tube and add 100ul of sterile water to dissolve the DNA.
3. Close the tube and incubate for 10 minutes at room temperature.
4. Briefly vortex the tube and then do a quick spin (less than 5000xg) to concentrate the liquid at the bottom.
5. Store the suspended plasmid at -20°C. The DNA is stable for at least one year from date of shipping when stored at -20°C.

RefSeq: [NM_175044.3](#), [NP_778209.2](#)

RefSeq Size: 6905 bp

RefSeq ORF: 5226 bp

Locus ID: 71458

UniProt ID: [Q8CGN4](#)

Cytogenetics: X A1.1

Gene Summary:

Transcriptional corepressor. May specifically inhibit gene expression when recruited to promoter regions by sequence-specific DNA-binding proteins such as BCL6 and MLLT3. This repression may be mediated at least in part by histone deacetylase activities which can associate with this corepressor. Involved in the repression of TFAP2A; impairs binding of BCL6 and KDM2B to TFAP2A promoter regions. Via repression of TFAP2A acts as a negative regulator of osteo-dentiogenic capacity in adult stem cells; the function implies inhibition of methylation on histone H3 'Lys-4' (H3K4me3) and 'Lys-36' (H3K36me2) (By similarity). [UniProtKB/Swiss-Prot Function]