

Product datasheet for **MG226638**

Ids (NM_010498) Mouse Tagged ORF Clone

Product data:

Product Type:	Expression Plasmids
Product Name:	Ids (NM_010498) Mouse Tagged ORF Clone
Tag:	TurboGFP
Symbol:	Ids
Synonyms:	AW214631
Mammalian Cell Selection:	Neomycin
Vector:	pCMV6-AC-GFP (PS100010)
E. coli Selection:	Ampicillin (100 ug/mL)



[View online »](#)

ORF Nucleotide Sequence:

>MG226638 representing NM_010498
 Red=Cloning site Blue=ORF Green=Tags(s)

TTTTGTAATACGACTCACTATAGGGCGGCCGGAATTCGTCGACTGGATCCGGTACCGAGGAGATCTGCC
 GCC**CGCATCGCC**

ATGTCGCCGCCGCCGCCGCCCTATCTGGCGGCAGCTTACGCTTCACTTGTGCTAGGCTCCTTCTGCA
 TCGCCCTGGAGTCCGACGCGCAAGGCAACTCTGCTACAGATGCTCTGAACATCCTTCTGATCATTGTGGA
 TGATCTCCGCCCTCCCTGGGCTGTTATGGAGACAAGCTAGTGAGGTCCCGAACATTGACCAGCTGGCA
 TCCCATAGCGTTCTTTTTCAGAAATGCCTTTGCTCAGCAAGCAGTGTGCGCACCAAGTTCGAGTGTCTTCC
 TCACCGGGAGGAGGCTGACACCACCCGCTGTATGACTTCAATTCCTACTGGAGGTACATTCTGGAAA
 TTTTCCACCATCCCCAATACTTCAAGGAGAATGGCTACGTGACCATGTCGGTTGGGAAAGTCTTTTAC
 CCTGGTATATCTCCAATCACAGTGATGATTATCCATATAGCTGGTCTTTTCCACCTTATCATCCATCCT
 CAGAGAAATATGAAAACACTAAGACGTGAAGGGACAAGATGGAAAACCTCCACGCCAATCTGCTTTGTCC
 TGTGATGTGGCAGATGTGCTTGAAGTACCTTGCTGACAAACAGAGCAGACAGAAGAAGCCATCAGTTG
 TTGGAAAAGATGAAGACATCAGCTAGTCTTTCTTCTGGCAGTTGGGTACCACAAGCCGATATCCCTT
 TCAGATACCCCAAGGAATTTTCAAGATTGTATCCCTTGGAAAACATAACCTGGCTCCTGATCCCATGT
 TCCTGATAGCCTACCACCTGTAGCCTACAACCCCTGGATGGATATCAGGGAGAGGGAAGATGTCCAAGCC
 TTAACATCAGTGTTCCTATGGACCAATTCCTGAGGATTTTTCAGCGGAAAATCCGCCAGAGCTACTTTG
 CTTCTGTGTCCTATTTGGATACTCAGGTTGGACATGTTTTGAGTGTCTTGGATGATCTTCGCTAGCCCA
 CAACACAATTATGCTTTTACATCTGATCACGGATGGCCCTAGTGAAACACGGAGAATGGGCCAAGTAC
 AGCAACTTTGATGTTGCTACCCGTGTCCCTGATGCTCTATGTCCTTGAAGGACGCCCCACTTCCTG
 CGGCAGCCAGAAAGCTCTTTCCATACCGGGACCCCTTTGATCCGGCCTCGGATTGGATGGATGCAGGCAG
 GCACACCGAGGACCTCGTAGAACTGTATCTCTTCCACGCTCGCTGGACTTGCAGGACTGCCAGTT
 CCTCTCGGTGCCCATCCCTTCTTTTTCATGTTGAGCTTTGCAGAGAAGGCCAGAATCTTCAAGAAGCATT
 TGCAGCTCCATGACTTGAAGAGGAGCCAGACTTGTGGTAATCCCGGGAGTTGATCGCCTATAGCCA
 GTACCCCGGCCCTGCAGATTTCCCTCAGTGAATCTGACAAGCCAAGCTTAAATGATATAAAGGTCATG
 GGATATTCTATACGCACTGTAGACTACAGGTACTGTGTGGTTGGCTTCGATCCTAGTGAATTTCTGG
 CTAACCTTTCTGATATCCATGCCGGGAACTCTATTTTGTGATCTGACCCACTGCAGGATCACAATGT
 ATATAATGACTCCCAACATGGAGGTCTTCTCCACTCACTGAGGCC

ACGCGTACGCGGCCGCTCGAG - GFP Tag - GTTTAA

Protein Sequence:

>MG226638 representing NM_010498
 Red=Cloning site Green=Tags(s)

MSPPPPPIWRQLSFLLLGSFCIALESAAQNSATDALNILLIIVDDLRLPSLGCYGDKLVRSNPIDQLA
 SHSVLFQNAFAQAVCAPSRVSLTGRRPDTRLYDFNSYWRVHSGNFSTIPQYFKENGYVTMSVGKVFH
 PGISSNHSDYPYSWSPFPYHPSSEKYENTKTCKGQDGKLANLLCPVDVADVPEGLTPDKQSTEEAIRL
 LEKMKTSASPFFLAVGYHKPHIPFRYPKEFQKLYPLENITLAPDPHPVDSLPPVAYNPWMDIREREDVQA
 LNISVPYGPPIPEDFQRKIRQSYFASVSYLDTQVGHVLSALDDLRLAHNTIIAFTSDHWALGEHGEWAKY
 SNFDVATRVPLMLYVPGRTAPLPAAGQKLFYRDPFDPASDWMDAGRHTEDLVELVSLFPTLAGLAGLPV
 PPRCPIPSFHVELCREGQNLQKHLQLHDLEEDLFGNPRELIAYSQYPRPADFPQWNSDKPSLNDIKVM
 GYSIRTVDYRYTVWVGDFPSEFLANFSDIHAGELYFVDSPLQDHNVYNDVSDHGGLLHSLRP

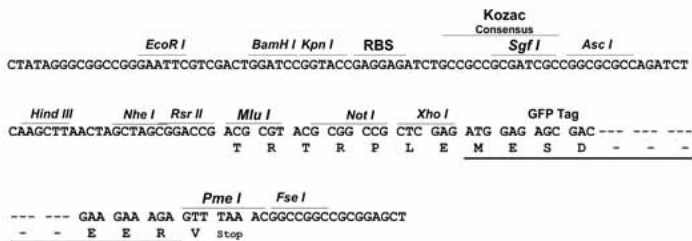
TRTRPLE - GFP Tag - V

Restriction Sites:

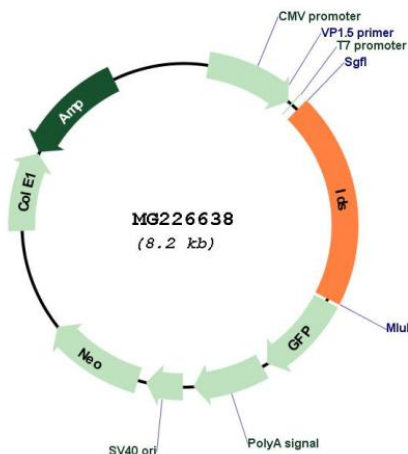
Sgfl-Mlul

Cloning Scheme:

Cloning sites used for ORF Shutting:



Plasmid Map:



ACCN:	NM_010498
ORF Size:	1656 bp
OTI Disclaimer:	<p>Due to the inherent nature of this plasmid, standard methods to replicate additional amounts of DNA in E. coli are highly likely to result in mutations and/or rearrangements. Therefore, OriGene does not guarantee the capability to replicate this plasmid DNA. Additional amounts of DNA can be purchased from OriGene with batch-specific, full-sequence verification at a reduced cost. Please contact our customer care team at custsupport@origene.com or by calling 301.340.3188 option 3 for pricing and delivery.</p> <p>The molecular sequence of this clone aligns with the gene accession number as a point of reference only. However, individual transcript sequences of the same gene can differ through naturally occurring variations (e.g. polymorphisms), each with its own valid existence. This clone is substantially in agreement with the reference, but a complete review of all prevailing variants is recommended prior to use. More info</p>
OTI Annotation:	This clone was engineered to express the complete ORF with an expression tag. Expression varies depending on the nature of the gene.
Components:	The ORF clone is ion-exchange column purified and shipped in a 2D barcoded Matrix tube containing 10ug of transfection-ready, dried plasmid DNA (reconstitute with 100 ul of water).
Reconstitution Method:	<ol style="list-style-type: none"> 1. Centrifuge at 5,000xg for 5min. 2. Carefully open the tube and add 100ul of sterile water to dissolve the DNA. 3. Close the tube and incubate for 10 minutes at room temperature. 4. Briefly vortex the tube and then do a quick spin (less than 5000xg) to concentrate the liquid at the bottom. 5. Store the suspended plasmid at -20°C. The DNA is stable for at least one year from date of shipping when stored at -20°C.
RefSeq:	NM_010498.3 , NP_034628.2
RefSeq Size:	4988 bp
RefSeq ORF:	1659 bp
Locus ID:	15931
UniProt ID:	Q08890
Cytogenetics:	X 36.01 cM
Gene Summary:	Required for the lysosomal degradation of heparan sulfate and dermatan sulfate. [UniProtKB/Swiss-Prot Function]