

## Product datasheet for **MG226637**

### **IL7r (NM\_008372) Mouse Tagged ORF Clone**

#### **Product data:**

Product Type:	Expression Plasmids
Product Name:	IL7r (NM_008372) Mouse Tagged ORF Clone
Tag:	TurboGFP
Symbol:	IL7r
Synonyms:	CD127; IL-7Ralpha
Mammalian Cell Selection:	Neomycin
Vector:	pCMV6-AC-GFP (PS100010)
E. coli Selection:	Ampicillin (100 ug/mL)



[View online »](#)

**ORF Nucleotide Sequence:**

>MG226637 representing NM\_008372  
 Red=Cloning site Blue=ORF Green=Tags(s)

TTTTGTAATACGACTCACTATAGGGCGGCCGGAATTCGTCGACTGGATCCGGTACCGAGGAGATCTGCC  
 GCC**CGCATCGCC**

ATGATGGCTCTGGGTAGAGCTTTTCGCTATAGTTTTCTGCTTAATCAAGCTGTTTCTGGAGAAAGTGGAA  
 ATGCCCAGGATGGAGACCTAGAAGATGCAGACGCGGACGATCACTCCTTCTGGTGCCACAGCCAGTTGGA  
 AGTGGATGGAAGTCAACATTTATTGACTTGTGCTTTTAATGACTCAGACATCAACACAGCTAATCTGGAA  
 TTTCAAATATGTGGGCTCTTTACGAGTGAAATGCCTAACTCTTAACAAGCTGCAAGATATATATTTTA  
 TAAAGACATCAGAATCTTACTGATTGGTAGCAGCAATATATGTGTGAAGCTTGGACAAAAGAATTAAC  
 TTGCAAAAATATGGCTATAAACACAATAGTTAAAGCCGAGGCTCCCTCTGACCTGAAAGTCGTTTATCGC  
 AAAGAAGCAAATGATTTTTTGGTGACATTTAATGCACCTCACTTGAAAAAGAAATATTTAAAAAAGTAA  
 AGCATGATGTGGCTACCGCCAGCAAGGGGTGAAAGCAACTGGACGCATGTATCTTTATCCACACAAG  
 AACACAATCCCACAGAGAAAACACTACGACAAAAGCAATGTATGAAATCAAAGTCCGATCCATCCCAT  
 AACGATTACTTCAAAGGCTTCTGGAGCGAGTGGAGTCCAAGTTCTACCTCGAAAACCTCCAGAACCCAAGA  
 ATCAAGGAGGATGGGATCCTGTCTTGCCAAAGTGTACCATTCTGAGTTTGTCTCTGTGTTTTTGTGGT  
 CATCTTAGCCCATGTGCTATGGAAAAAAGGATTAACCTGTGCTATGGCCTAGTCTCCCGATCATAAG  
 AAAACTCTGGAACAACACTATGAAGAAGCCAAAACGAGTCTGAATGTGAGTTTCAATCCCGAAAGTTTCC  
 TGGACTGCCAGATTATGAGGTGAAAGGCGTTGAAGCCAGGGACGAGGTGGAAAGTTTTCTGCCCAATGA  
 TCTTCTGCACAGCCAGAGGAGTTGGAGACACAGGGACACAGAGCCGCTGTACACAGTCAAACCGCTCG  
 CCTGAGACTTCAATGAGTCCAGCCAGCAAGCAAGTTAGAAGAGAGTCAACCTTAAGATGCCTGGCTAGAAATC  
 TGAGTACCTGCAATGCCCTCCACTCTTCTCTAGGTCCCCTGACTACAGAGATGGTGACAGAAATAG  
 GCCTCCTGTGTATCAAGACTTGTGCAAACTCTGGAAAACAAAATGTCCCTGTCCCTGTCCCTCAACCA  
 TTGCCCTTCCAGTCGGGAATCCTGATACAGTTTCTCAGAGACAGCCATCTCCACTTCTCAGTACTGA  
 ATCAAGAAGAAGCGTATGTACCATGTCTAGTTTTTACCAAAACAAA

**ACGCGT**ACGCGGCCGCTCGAG - GFP Tag - GTTTAA

**Protein Sequence:**

>MG226637 representing NM\_008372  
 Red=Cloning site Green=Tags(s)

MMALGRAFAIVFCLIQAVSGESGNAQDGDLEDADADDHSFWCHSQLEVDGSGHLLTCAFNDSDINTANLE  
 FQICGALLRVKCLTLNKLQDIYFIKTSEFLLIGSSNICVKLGQKNLTCKNMAINTIVKAEAPSDLKVVYR  
 KEANDFLVTFNAPHLKKKYLKKVKHDVAYRPARGESNWTNTHVSLFHTRTTIPQRKLRPKAMYIIVRSIPH  
 NDYFKGFWEWSPSSTFETPEPKNQGGWDPVLPSTILSLFSVFLLVILAHVLWKKRIKPVVWPSLPDHK  
 KTLEQLCKPKTSLNVSFNPEFLDCQIHEVKGVVEARDEVESFLPNLPAQPEELETQGHRAAVHSANRS  
 PETSVSPPETVRRRESPLRCLARNLSTCNAPLLSSRSPDYRDGDRNRPPVYQDLLPNSGNTNVPVVPVQP  
 LPFQSGILIPVSQRQPISTSSVLNQEAYVTMSSFYQNK

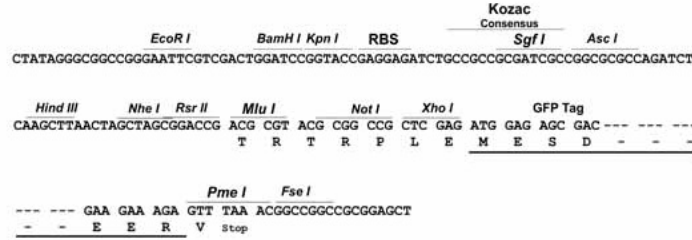
**TRTRPLE** - GFP Tag - V

**Restriction Sites:**

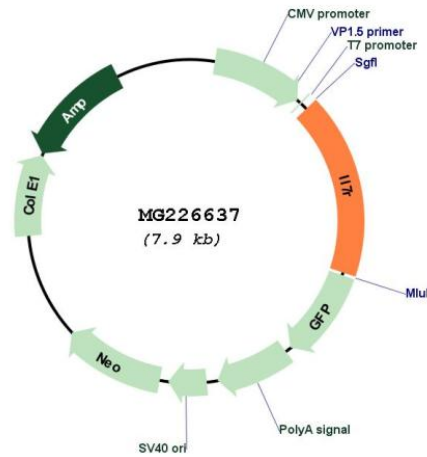
Sgfl-MluI

Cloning Scheme:

Cloning sites used for ORF Shutting:



Plasmid Map:



ACCN: NM\_008372

ORF Size: 1377 bp

<b>OTI Disclaimer:</b>	<p>Due to the inherent nature of this plasmid, standard methods to replicate additional amounts of DNA in E. coli are highly likely to result in mutations and/or rearrangements. Therefore, OriGene does not guarantee the capability to replicate this plasmid DNA. Additional amounts of DNA can be purchased from OriGene with batch-specific, full-sequence verification at a reduced cost. Please contact our customer care team at <a href="mailto:custsupport@origene.com">custsupport@origene.com</a> or by calling 301.340.3188 option 3 for pricing and delivery.</p> <p>The molecular sequence of this clone aligns with the gene accession number as a point of reference only. However, individual transcript sequences of the same gene can differ through naturally occurring variations (e.g. polymorphisms), each with its own valid existence. This clone is substantially in agreement with the reference, but a complete review of all prevailing variants is recommended prior to use. <a href="#">More info</a></p>
<b>OTI Annotation:</b>	<p>This clone was engineered to express the complete ORF with an expression tag. Expression varies depending on the nature of the gene.</p>
<b>Components:</b>	<p>The ORF clone is ion-exchange column purified and shipped in a 2D barcoded Matrix tube containing 10ug of transfection-ready, dried plasmid DNA (reconstitute with 100 ul of water).</p>
<b>Reconstitution Method:</b>	<ol style="list-style-type: none"><li>1. Centrifuge at 5,000xg for 5min.</li><li>2. Carefully open the tube and add 100ul of sterile water to dissolve the DNA.</li><li>3. Close the tube and incubate for 10 minutes at room temperature.</li><li>4. Briefly vortex the tube and then do a quick spin (less than 5000xg) to concentrate the liquid at the bottom.</li><li>5. Store the suspended plasmid at -20°C. The DNA is stable for at least one year from date of shipping when stored at -20°C.</li></ol>
<b>RefSeq:</b>	<p><a href="#">NM_008372.4</a>, <a href="#">NP_032398.3</a></p>
<b>RefSeq Size:</b>	<p>3227 bp</p>
<b>RefSeq ORF:</b>	<p>1380 bp</p>
<b>Locus ID:</b>	<p>16197</p>
<b>UniProt ID:</b>	<p><a href="#">P16872</a></p>
<b>Cytogenetics:</b>	<p>15 4.16 cM</p>
<b>Gene Summary:</b>	<p>Interleukin-7 is a glycoprotein involved in the regulation of lymphopoiesis. Response of cells to IL7 is dependent on the presence of the interleukin 7 receptor (IL7R); the active receptor is a alpha/gamma chain heterodimer. The gamma(c) chain, which also associates with the interleukin-2 receptor, serves primarily to activate signal transduction by the IL7R complex, while the alpha chain of IL7R determines specific signaling events through its association with cytoplasmic signaling molecules. [provided by RefSeq, Jul 2008]</p>