

Product datasheet for **MG226624**

Nlgn1 (NM_138666) Mouse Tagged ORF Clone

Product data:

Product Type:	Expression Plasmids
Product Name:	Nlgn1 (NM_138666) Mouse Tagged ORF Clone
Tag:	TurboGFP
Symbol:	Nlgn1
Synonyms:	6330415N05Rik; BB179718; mKIAA1070; NL1; Nlg1
Mammalian Cell Selection:	Neomycin
Vector:	pCMV6-AC-GFP (PS100010)
E. coli Selection:	Ampicillin (100 ug/mL)



[View online »](#)

ORF Nucleotide Sequence:

>MG226624 representing NM_138666
 Red=Cloning site Blue=ORF Green=Tags(s)

TTTTGTAATACGACTCACTATAGGGCGGCCGGAATTCGTCGACTGGATCCGGTACCGAGGAGATCTGCC
 GCC**CGGATCGCC**

ATGGCACTTCCCAGATGCATGTGGCCAAATATGTTTGGAGAGCTATGATGGCATGTGTGGTCCACAGGG
 GATCCGGTGCCCATTTGACTCTCTGCTTGTGGGATGTTTGTACAGACTTTTCAGTACTCTCTCAAAA
 GTTGGATGATGTAGACCCATTGGTTACTACTAACTTTGGCAAGATTAGGGGAATTAAGAAAGAACTCAAT
 AATGAAATTTTGGGTCCTGTCTTTCAGTTTCTTGGGGTCCATATGCCGCTCCACCAACAGGAGAATC
 GTTCCAGCCTCCAGAACCACCTCTCCCTGGTCTGACATCCGGAACGCCACTCAGTTTGTCTGTATG
 TCCCCAGAATATCATTGATGGCAGATTGCCTGAAGTTATGCTTCTGTGTGGTCCACTAATAACTGGAT
 GTGGTTTCATCATACGTCCAAGACCAGAGTGAAGACTGTCTATACTTAAACATCTATGTCCCACTGAAG
 ATGGTCCCCTTACAAAGAAACACACAGATGATTTAGGTGATAATGACGGTCTGAAGATGAAGATATTCCG
 GGACAGTGGGGTCCCAAACCAGTGATGGTGTACATCCATGGCGGCTTACATGGAAGGTTACTGGAAAT
 CTGTATGATGGGAGTGTCTTGGCAAGCTATGGCAATGTGATCGTATCACAGTCAACTATCGGCTTGGGG
 TACTTGGCTTCTTGGACACAGGGGATCAGGCTGCCAAAGGAAACTACGGGCTCCTTGACCTCATCCAGGC
 CCTAAGATGGACCAGCGAGAACATTGGGTTCTTGGTGGTGACCCCTTGCGAATCACTGTGTTTGGATCA
 GGCGCTGGGGTTCATGTGTCAACCTGTGACTTTATCCATTATTCTGAAGGTAACCGTTGGAGCAATT
 CAACCAAGGACTTTTTCAACGAGCAATAGCTCAGAGTGGAAACAGCCCTTCCAGCTGGGCTGTTAGTTT
 CCAGCCTGCAAAATACGCTAGAATTCTGGCCACAAAAGTTGGCTGCAATGTTTCAGATACAGTAGAGTTA
 GTAGAATGCCTGCAGAAGAAGCCTTACAAAGAAGTTGTTGATCAAGATGTTCAACCAGCCGATACCACA
 TAGCCTTTGGACCTGTGATCGATGGTGTGTAATACCAGATGACCCTCAGATACTGATGGAAAGGATA
 GTTCTCAACTATGATATAATGTTGGGAGTTAACCAAGGGGAAGGTTGAAGTTTGTGCAAAATATAGTA
 GATAGTGTGATGGTGTATCAGCCAGTATTCGACTTTGCTGTTTCTAATTTTGTGATATTTATATG
 GATATCTGAAGGCAAAGATGTTTTGAGAGAAACCATTAAATTCATGTATACTGACTGGGCTGATCGCCA
 TAATCCTGAAACTAGAAGGAAGACATTGTTGGCTTTGTTACGGACCATCAATGGGTAGCACCTGCTGTG
 GCCACAGCAGACCTTCACTCGAAGTTGGCTCACCTACATACTTCTATGCCTTTTATCATCATTGCCAAA
 CAGATCAAGTTCAGCTTGGGCTGATGCAGCTCATGGGGATGAGGTTCCCTATGTGTTGGGAATCCCAT
 GATTGGCCCTACAGAGTTATTTCTTGAATTTCTCAAGAATGATGTGATGTTGAGTGCAGTAGTAATG
 ACATACTGGACGAATTTTGTAAAAGTGGTGACCCAAATCAACCAGTTCCCTCAAGACACAAAATTCATCC
 ATACCAAAACCAACCGCTTTGAAGAAGTAGCATGGACCAGATATCCAGAAAGACCAGCTTTATCTCCA
 TATTGGATTAACCGAGAGTTAAAGAGCATTACAGAGCCAATAAGGTAATCTCTGGCTGGAGCTGGTA
 CCTCATCTGCATAATCTCAATGACATTTCTCAGTATACCTCGACAACAACTAAAGTGCCATCCACGGACA
 TCACTCTCAGACCTACAAGGAAGAAATCCACACCAGTCACATCAGCCTTTCCCACTGCCAAACAGGATGA
 TCCCAAGCAACAACCAAGCCCTTCTCGGTGGATCAGAGGGACTACTCCACAGAGCTAAGTGTCACTATC
 GCAGTGGGGCCTCTCTGCTGTTTCTCAACATCTTGGCTTTTGCAGCCCTGTACTACAAGAAGGATAAGA
 GGAGACATGATGTCCACCGGAGGTGCAGCCCTCAGCGCACGACCACCAACGACCTAACCCATGCTCCAGA
 AGAGGAAATATGTCTCTCCAAATGAAGCACACTGACTTGGATCAGAGTGTGAGTCCATCCATCCACAT
 GAGGTGGTTCTTCGGACCGCTGTCCCCAGATTATACTCTAGCTATGAGGAGGTACCTGATGATATTC
 CACTAATGACACCTAACCCATCACAATGATTCCTCAACTATACCAGGGATTACGCCCTTACATACATT
 CAACACATTTACTGGAGGACAGAATAATACACTGCCCCATCCCCACCCACACCCCATTCACATTCAACA
 ACCAGGGTA

ACGGTACGCGGCCGCTCGAG - GFP Tag - GTTTAA

Protein Sequence: >MG226624 representing NM_138666
Red=Cloning site Green=Tags(s)

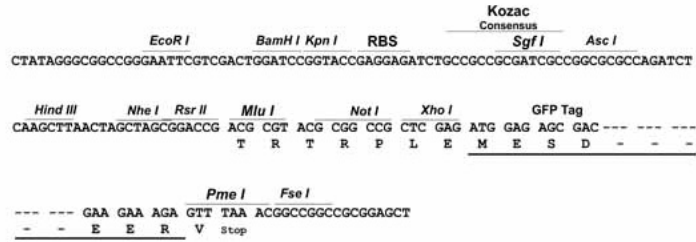
MALPRCMWPNYVWRAMMACVVHRGSGAPLTLCLLGCLLQTFHVL SQKLDDVDPLVTTNFGKIRGIKKELN
NEILGPVIQFLGVPYAAPPTGEHRFQPPEPPSPWSDIRNATQFAPVCPQNIIDGRLPEVMLPVWFTNNLD
VVSSYVQDQSEDCLYLNIYVPTEDGPLTKKHTDDLGDNDGAEDDIRDSGGPKPVMVYIHGGSYMEGTGN
LYDGSVLASYGNVIVITVNYRLGVLGFLSTGDQAAKGNVGLLDLIQALRWTSENIGFFGGDPLRITVFGS
GAGGSCVNLTL SHYSEGNRWSNSTKGLFQRAIAQSGTALSSWAVSFQPAKYARILATKVCNVSDTVEL
VECLQKKPYKELVDQDVQPARYHIAFGPVIDGDVIPDDPQILMEQGEFLNYDIMLGVNQGEGLKFVENIV
DSDDGVSASDFDFAVSNFVDNLYGYPEGKDVLRRETIKFMYPDWADRHNPETRRKTLLALFTDHQWVAPAV
ATADLHSNFGSPTYFYAFYHHCQTDQVPAWADA AHGDEVYVVLGIPMIGPTELFPCNFSKNDVMLS AVVM
TYWTNFAKTGDPNQPVPQDTKFIHTKPNRFEEVAWTRYSQKDQLYLHIGLKPRVKEHYRANKVNLWLELV
PHLHNLNDISQYSTTTTKVPSTDITLRPTRKNSTPVTSAPPTAKQDDPKQQPSPFSVDQRDYSTELSVTI
AVGASLLFLNILAFAALYKKKDKRRHDVHRRCSPPQRTTTNDLTHAPEEEIMSLQMKHTDLDECESIHPH
EVLRTACPPDYTLAMRRSPDDIPLMTPNTITMIPNTIPGIQPLHTFNTFTGGQNNLTPHPHPHSHST
TRV

TRTRPLE - GFP Tag - V

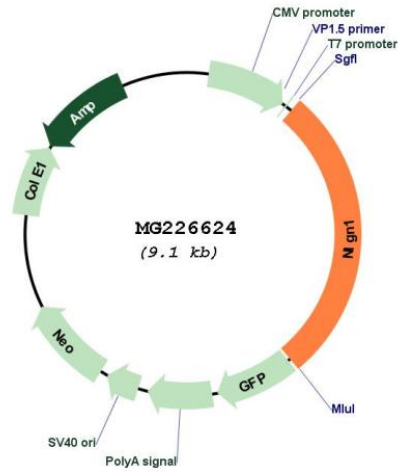
Restriction Sites: Sgfl-MluI

Cloning Scheme:

Cloning sites used for ORF Shutting:



Plasmid Map:



ACCN:	NM_138666
ORF Size:	2529 bp
OTI Disclaimer:	The molecular sequence of this clone aligns with the gene accession number as a point of reference only. However, individual transcript sequences of the same gene can differ through naturally occurring variations (e.g. polymorphisms), each with its own valid existence. This clone is substantially in agreement with the reference, but a complete review of all prevailing variants is recommended prior to use. More info
OTI Annotation:	This clone was engineered to express the complete ORF with an expression tag. Expression varies depending on the nature of the gene.
Components:	The ORF clone is ion-exchange column purified and shipped in a 2D barcoded Matrix tube containing 10ug of transfection-ready, dried plasmid DNA (reconstitute with 100 ul of water).
Reconstitution Method:	<ol style="list-style-type: none">1. Centrifuge at 5,000xg for 5min.2. Carefully open the tube and add 100ul of sterile water to dissolve the DNA.3. Close the tube and incubate for 10 minutes at room temperature.4. Briefly vortex the tube and then do a quick spin (less than 5000xg) to concentrate the liquid at the bottom.5. Store the suspended plasmid at -20°C. The DNA is stable for at least one year from date of shipping when stored at -20°C.
RefSeq:	NM_138666.4
RefSeq Size:	5630 bp
RefSeq ORF:	2532 bp
Locus ID:	192167
UniProt ID:	Q99K10
Cytogenetics:	3 A3
Gene Summary:	Cell surface protein involved in cell-cell-interactions via its interactions with neurexin family members. Plays a role in synapse function and synaptic signal transmission, and probably mediates its effects by recruiting and clustering other synaptic proteins. May promote the initial formation of synapses, but is not essential for this. In vitro, triggers the de novo formation of presynaptic structures. May be involved in specification of excitatory synapses. Required to maintain wakefulness quality and normal synchrony of cerebral cortex activity during wakefulness and sleep (PubMed:23716671).[UniProtKB/Swiss-Prot Function]