

Product datasheet for **MG226623**

Ncam2 (NM_010954) Mouse Tagged ORF Clone

Product data:

Product Type:	Expression Plasmids
Product Name:	Ncam2 (NM_010954) Mouse Tagged ORF Clone
Tag:	TurboGFP
Symbol:	Ncam2
Synonyms:	Ncam-2; Ocam; RNCAM
Mammalian Cell Selection:	Neomycin
Vector:	pCMV6-AC-GFP (PS100010)
E. coli Selection:	Ampicillin (100 ug/mL)



[View online »](#)

ORF Nucleotide
Sequence:

>MG226623 representing NM_010954
 Red=Cloning site Blue=ORF Green=Tags(s)

TTTTGTAATACGACTCACTATAGGGCGGCCGGGAATTCGTCGACTGGATCCGGTACCGAGGAGATCTGCC
 GCCGCGATCGCC

ATGAGCCTCCTCCTCTCCTTCTACCTGCTCGGGTTGCTTGTGTCAGGAGCGGGCAAGCTCTTCTCAAGTGA
 CAATTTCACTTAGCAAAGTAGAGCTTAGTGTGGGTGAGTCTAAATTTCTCACATGTACAGCCATTGGTGA
 GCCTGAGAGTATCGACTGGTATAACCCCTCAAGGAGAGAAGATCATTTCACGCAGAGGGTTATGCTACAG
 AAGGAGGGTGTCAAGTACGACTCACCCTCTACAATGCAAACATAGAAGATGCAGGGATATATCGCTGTC
 AAGCGACAGATGCCAAAGGACAGACACAAGAAGCTACAGTAGTTTTGGAAATTTACCAAAAACCTCACCTT
 CAGAGAAGTGGTGTCCCCTCAAGAGTTCAGCAAGGGGAGGATGCAGAAGTGGTTTGAGAGTGTGAGCAGT
 TCCCCAGCCCCTGCGGTGAGTGGTGTACCACAATGAGGAAGTACCACCATCCCCGACAATCGGTTTG
 CAGTGTCTGCAAACAATAATTTGCAGATCCTCAATATCAATAAAAGTGATGAAGGTATATACAGATGTGA
 AGGAAGAGTGGAGGCGAGGGGAGAGATTGACTTCCGGGATATCATTGTTATTGTTAACGTTCCACCAGCA
 ATCATGATGCCCCAGAAGTCCTTCAATGCTACAGCAGAGAGAGGAGAAGAGATGACCTTAACATGCAAGG
 CCTCGGGCTCCCAGATCCAACCATCTCTTGGTTCAGGAACGGCAAACCTCATTGAAGAAAATGAAAAGTA
 TATTTAAAGGGCAGTAATACAGAGCTCACTGTGACGAACATAATCAATAAAGACGGGGCTCTTATGTC
 TGCAAAGCAACAAACAAGGCAGGAGAAGATCAAAGCAGGCCCTTCTTCAAGTCTTTGTACAGCCTCATA
 TATTACAACCTTAAAAATGAGACAACATCTGAGAATGGTCATGTACACTCGTATGTGAAGCAGAAGGGGA
 GCCTGTTCAGAAATCACATGAAAAGAGCCATAGATGGAGTCATGTTTTCTGAAGGTGATAAGAGTCCG
 GATGGCCGCATCGAAGTTAAAGGGCAGCATGGACGCTCTTCACTGCACATTAGAGATGTGAAGTTGTCAG
 ATTCGGGGAGATATGACTGTGAGGCCGCTAGTCGGATTGGTGGGCACCAGAGGAGCATGCACCTGGACAT
 CGAATATGCTCCTAAGTTTGTGTTTCAAATCAGACAATGTATTACTCTTGGGAAGGAAATCCAATCAACATA
 AGTTGTGATGTGACAGCAAAACCCACCTGCGTCAATCCACTGGAGAAGAGAGAAAAGTCTCTTACCAGCTA
 AGAATACGACTCATTTAAAAACTCACAGTGTAGGAAGAAAGATGATACTCGAGATTGCCCCACATCAGA
 CAATGACTTTGGACGATATAACTGCACAGCTACTAACCCTATAGGCACAAGATTTAGGAATATATTCTT
 GAATTAGCAGATGTCCCCTCTAGTCCCCATGGAGTGAAGATTATAGAGCTGTACAGACCACAGCCAAGA
 TCTCTTTCAATAAACCCGAATCCCATGGAGGTGTGCCTATTCATCACTATCAAGTGGATGTCAAAGAAGT
 GGCATCAGAAACCTGAAAATAGTACGCTCCCATGGAGTTCAAACGATGGTTGTTTTGAGCAGTCTGGAA
 CCAAATACGACTTACGAAATTAGGTTGCAGCAGTGAATGGCAAAGGTCAAGGAGACTACAGTAAAATAG
 AAATATCCAGACACTGCCAGTCCGTGAGCCAAGTCCCCCTTCCATACATGGACAGCCAAGCAGTGGCAA
 GAGTTTTAAAAATCAGCATCACCAGCAAGATGATGGAGGGGCTCCTATTTTAGAATACATTGTAAAATAC
 AGAAGTAAAGACAAGGAAGATCAGTGGCTAGAGAAGAAGGTACAGGGAAATAAAGACCACATTATCTTGG
 AGCATCTGCAGTGGACAATGGGCTACGAAGTCAAATCACAGCTGCCAACAGACTGGGATATTCTGAGCC
 TACTGTATATGAGTTCAGCATGCCCCAAAACCAACATTATTAAGATAAATTGCTGTGAAGCGAATAAA
 GGTGAAAATGGAGGCCAGTCATGGCATCTGAATGCTGTTGGGTTACTTTTGAATAACCATGAGTTTGT
 CTTGTTTGT

ACGCGTACGCGGCCGCTCGAG - GFP Tag - GTTTAA

Protein Sequence: >MG226623 representing NM_010954
 Red=Cloning site Green=Tags(s)

MSLLLSFYLLGLLVRSGQALLQVTISLSKVELSVGESKFFCTAIGEPESIDWYNPQGEKIISTQRVMLQ
 KEGVRSRLTIYNANIEDAGIYRCQATDAKGQTQEATVVLEIYQKLTFRVVPQEFKQGEDAEVVCRVSS
 SPAPAVSWLYHNEEVTTIPDNRFVLANNNLQILNINKSDEGIYRCEGRVEARGEIDFRDIIVIVNVPPA
 IMMPQKSFNATAERGEEMTLTCKASGSPDPTISWFRNGKLIENEKYILKGSNTELTVRNIINKDGGSYV
 CKATNKAGEDQKQAFVQPHILQLKNETTSENGHVTLVCEAEGEPVPEITWKRAIDGVMFSEGDKSP
 DGRIEVKGQHGRSSLHIRDVKLSDSGRYDCEAASRIGGHQRSMHLDIEYAPKFVSNQTMYYSWGPNINI
 SCDVTANPPASIHWRREKLLLPKNTTHLKTHSVGRKMILEIAPTSDNDFGRYNCATNTRIGTRFQEYIL
 ELADVSSPHGVKIIELSQTAKISFNKPESHGGVPIHHYQVDVKEVASETWKIVRSHGVQTMVLLSSE
 PNTTYEIRVAAVNGKGGDYSKIEIFQTLVREPSPPSIHQPSGKSFKISITKQDDGGAPILEYIVKY
 RSKDKEDQWLEKKVQGNKDHIILEHLQWTMGYEVQITANRLGYSEPTVYEFMPPKPNIKDNCCCEANK
 GENGGQSWHLNAVGTFFVITMSLSCLF

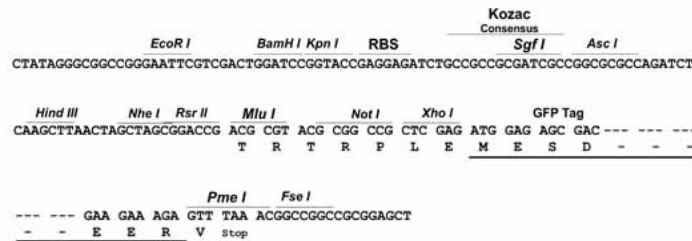
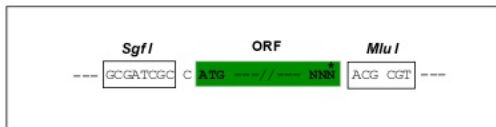
TRTRPLE - GFP Tag - V

Restriction Sites:

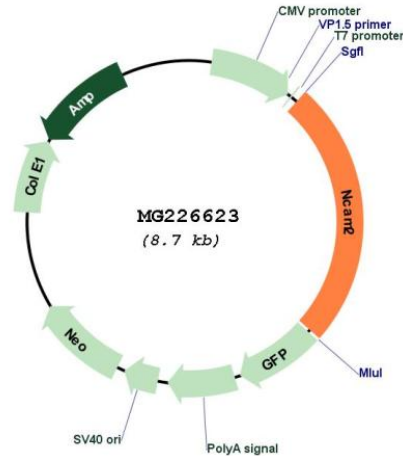
SgfI-MluI

Cloning Scheme:

Cloning sites used for ORF Shutting:



Plasmid Map:



ACCN: NM_010954

ORF Size: 2181 bp

OTI Disclaimer: Due to the inherent nature of this plasmid, standard methods to replicate additional amounts of DNA in E. coli are highly likely to result in mutations and/or rearrangements. Therefore, OriGene does not guarantee the capability to replicate this plasmid DNA. Additional amounts of DNA can be purchased from OriGene with batch-specific, full-sequence verification at a reduced cost. Please contact our customer care team at custsupport@origene.com or by calling 301.340.3188 option 3 for pricing and delivery.

The molecular sequence of this clone aligns with the gene accession number as a point of reference only. However, individual transcript sequences of the same gene can differ through naturally occurring variations (e.g. polymorphisms), each with its own valid existence. This clone is substantially in agreement with the reference, but a complete review of all prevailing variants is recommended prior to use. [More info](#)

OTI Annotation: This clone was engineered to express the complete ORF with an expression tag. Expression varies depending on the nature of the gene.

Components: The ORF clone is ion-exchange column purified and shipped in a 2D barcoded Matrix tube containing 10ug of transfection-ready, dried plasmid DNA (reconstitute with 100 ul of water).

Reconstitution Method:

1. Centrifuge at 5,000xg for 5min.
2. Carefully open the tube and add 100ul of sterile water to dissolve the DNA.
3. Close the tube and incubate for 10 minutes at room temperature.
4. Briefly vortex the tube and then do a quick spin (less than 5000xg) to concentrate the liquid at the bottom.
5. Store the suspended plasmid at -20°C. The DNA is stable for at least one year from date of shipping when stored at -20°C.

RefSeq: [NM_010954.4](#), [NP_035084.1](#)

RefSeq Size: 4893 bp

RefSeq ORF: 2184 bp

Locus ID: 17968

UniProt ID: [O35136](#)

Cytogenetics: 16 45.89 cM

Gene Summary: May play important roles in selective fasciculation and zone-to-zone projection of the primary olfactory axons.[UniProtKB/Swiss-Prot Function]