

Product datasheet for **MG226613**

Cd44 (NM_001039150) Mouse Tagged ORF Clone

Product data:

Product Type:	Expression Plasmids
Product Name:	Cd44 (NM_001039150) Mouse Tagged ORF Clone
Tag:	TurboGFP
Symbol:	Cd44
Synonyms:	AU023126; AW121933; AW146109; HERMES; Ly-24; Pgp-1
Mammalian Cell Selection:	Neomycin
Vector:	pCMV6-AC-GFP (PS100010)
E. coli Selection:	Ampicillin (100 ug/mL)



[View online »](#)

ORF Nucleotide Sequence:

>MG226613 representing NM_001039150
 Red=Cloning site Blue=ORF Green=Tags(s)

TTTTGTAATACGACTCACTATAGGGCGGCCGGAATTCGTCGACTGGATCCGGTACCGAGGAGATCTGCC
 GCC**CGGATCGCC**

ATGGACAAGTTTTGGTGGCACACAGCTTGGGGACTTTGCCTCTTGACGTTGAGCCTGGCACATCCACATC
 AGCAGATCGATTTGAATGTAACCTGCCGCTACGCAGGTGATTCCATGTGGAGAAAAATGGCCGCTACAG
 TATCTCCCGGACTGAGGCAGCTGACCTCTGCCAGGCTTCAACAGTACCTTACCCACCATGGACCAATG
 AAGTTGGCCCTGAGCAAGGGTTTTGAAACATGCAGGTATGGGTTCATAGAAGGAAATGTGGTAATCCGA
 GGATTCATCCCAACGCTATCTGTGCAGCCAACACACAGGAGTATATCCTCGTCACGTCCAACACCTC
 CCACTATGACACATATTGCTTCAATGCCTCAGCCCTCCTGAAGAAGACTGTACATCAGTCACAGACCTA
 CCCAATTCCTTCGATGGACCGGTTACCATAACTATTGTCAACCGTATGGTACTCGCTACAGCAAGAAGG
 GCGAGTATAGAACACACCAAGAAGACATCGATGCTTCAAACATTATAGATGACGATGTCAGCAGCGGCTC
 CACCATCGAGAAGAGCACCCAGAAAGTACATTTTGCACACCTACCTTCTACTGAACAGCCTACTGGA
 GATCAGGATGACTCCTTCTTATCCGGAGCACCTTGGCCACCCTCTAATAGTACAGCAGAAGCAGCAG
 CTACCCAGCAGGAGACGTGGTTTTCAGAACGGATGGCAGGGGAAGAACCCCTACCCCAAGTGAAGACTC
 CCATGTGACAGAAGGGACAACCTGCTTCGGCCACAACAACCATCCAAGTCAAAGAATAACAACACAGAGT
 CAAGAGGATGTTTCTGGACAGATTTCTTCGACCCAATCTCACATCCAATGGGACAAGGTTCATCAAACAG
 AAAGCAAGGATACAGACTCCAGTCATAGTACAACCTTTCAGCCTACTGCAGCTCCAAATACCCATTTGGT
 GGAAGACTTGAACAGGACAGGACCCTTTCAGTGACAACCTCCACAGAGTCATTCTCAGAACTTCTCTACA
 TTACATGGAGAGCCGGAAGAAGACGAAACCATCCAACAACCTTCTATTCTGCCATCTAGCACTAAGAGCG
 GCGCTAAAGATGCAAGAAGAGGTGGAAGTCTTCCACAGATAACAACCTTCTGTAGAAGGCTACACCTT
 TCAATACCCAGACACAATGGAAAAATGGGACTCTTCCAGTGACCCCTGCTAAAACTGAGGCTCTTTGGA
 GAAACTGAAGTACTCTTGTACTGACTCCAACGTTAATGTTGATGGCTCCTTACCAGGAGATCGAGACT
 CATCCAAGGACTCCAGGGGGAGTTCGCGCACTGTGACTCATGGATCCGAATTAGCTGGACACTCAAGTGC
 GAACCAGGACAGTGGAGTGACCACAACCTTCTGGTCTATGAGGAGACCTCAGATTCAGAATGGCTCATC
 ATCTTGGCATCTCTCTGGCACTGGCTCTGATTCTTCCGCTCTGCATCGCGGTCAATAGTAGGAGAAGGT
 GTGGGCAGAAGAAAAGCTGGTATCAACGGTGGCAATGGGACGGTGAAGACAGGAAACCCAGTGAAGT
 CAACGGGGAGGCCAGCAAGTCTCAGGAAATGGTGCATTTGGTGAACAAGGAACCATCAGAGACCCCGGAC
 CAGTGTATGACAGCTGACGAGACCCGGAATCTGCAGAGTGTGGACATGAAGATTGGGGT

ACGCGTACGCGGCCGCTCGAG - GFP Tag - GTTTAA

Protein Sequence:

>MG226613 representing NM_001039150
 Red=Cloning site Green=Tags(s)

MDKFWHWTAWGLCLLQLSLAHPHQIDLVNVCRYAGVFHVEKNGRYSISRTEADLCQAFNSTLPTMDQM
 KLALSKGFETCRYGFIENNVVIPRIHPNAICANHTGVYILVTSNTSHYDTYCFNASAPPEEDCTSVTDL
 PNSFDGPVTITIVNRDGRYSKKGAYRTHQEDIDASNIIDDDVSSGSTIEKSTPESYILHTYLPTREQPTG
 DQDDSFIRSTLATTPNSTAEAAATQQETWFQNGWQGNPPTPSEDVSHVTEGTTASAHNNHPSQRITTS
 QEDVSWTDFDPI SHPMGQGHQTESKDTDSSHSTLQPTAAPNTHLVEDLNRTGPLSVTTPQSHSQNFST
 LHGEPEEDENHPTTSILPSSTKSGAKDARRGSLPTDTTTSVEGYTFQYPDTMENGTLFPVTPAKTEVFG
 ETEVTLATDSNVNVDGSLPGDRDSSKDSRGSRTVTHGSELAGHSSANQDSGVTTS SGP MRRPQIPEWLI
 ILASLLALALILAVCIAVNSRRRCGQKKLVINGNGTVEDRKPSELNGEASKSQEMVHLVNKEPSETPD
 QCMTADETRNLQSVDMKIGV

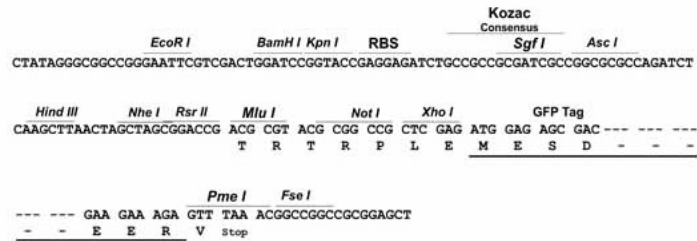
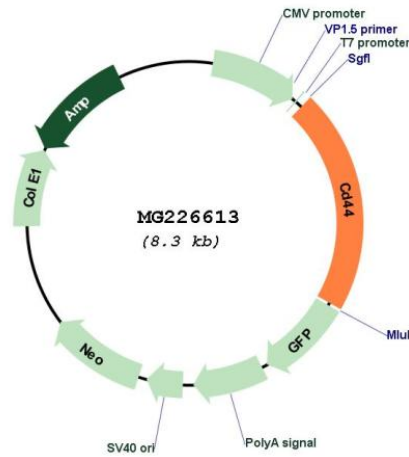
TRTRPLE - GFP Tag - V

Restriction Sites:

Sgfl-Mlul

Cloning Scheme:

Cloning sites used for ORF Shutting:

**Plasmid Map:**

ACCN: NM_001039150

ORF Size: 1740 bp

OTI Disclaimer:	The molecular sequence of this clone aligns with the gene accession number as a point of reference only. However, individual transcript sequences of the same gene can differ through naturally occurring variations (e.g. polymorphisms), each with its own valid existence. This clone is substantially in agreement with the reference, but a complete review of all prevailing variants is recommended prior to use. More info
OTI Annotation:	This clone was engineered to express the complete ORF with an expression tag. Expression varies depending on the nature of the gene.
Components:	The ORF clone is ion-exchange column purified and shipped in a 2D barcoded Matrix tube containing 10ug of transfection-ready, dried plasmid DNA (reconstitute with 100 ul of water).
Reconstitution Method:	<ol style="list-style-type: none">1. Centrifuge at 5,000xg for 5min.2. Carefully open the tube and add 100ul of sterile water to dissolve the DNA.3. Close the tube and incubate for 10 minutes at room temperature.4. Briefly vortex the tube and then do a quick spin (less than 5000xg) to concentrate the liquid at the bottom.5. Store the suspended plasmid at -20°C. The DNA is stable for at least one year from date of shipping when stored at -20°C.
RefSeq:	NM_001039150.1 , NP_001034239.1
RefSeq Size:	5054 bp
RefSeq ORF:	1743 bp
Locus ID:	12505
Cytogenetics:	2 54.13 cM
Gene Summary:	Cell-surface receptor that plays a role in cell-cell interactions, cell adhesion and migration, helping them to sense and respond to changes in the tissue microenvironment. Participates thereby in a wide variety of cellular functions including the activation, recirculation and homing of T-lymphocytes, hematopoiesis, inflammation and response to bacterial infection. Engages, through its ectodomain, extracellular matrix components such as hyaluronan/HA, collagen, growth factors, cytokines or proteases and serves as a platform for signal transduction by assembling, via its cytoplasmic domain, protein complexes containing receptor kinases and membrane proteases (PubMed:8343954, PubMed:25065622). Such effectors include PKN2, the RhoGTPases RAC1 and RHOA, Rho-kinases and phospholipase C that coordinate signaling pathways promoting calcium mobilization and actin-mediated cytoskeleton reorganization essential for cell migration and adhesion (By similarity). [UniProtKB/Swiss-Prot Function]