

Product datasheet for **MG226553**

Carf (NM_139150) Mouse Tagged ORF Clone

Product data:

Product Type:	Expression Plasmids
Product Name:	Carf (NM_139150) Mouse Tagged ORF Clone
Tag:	TurboGFP
Symbol:	Carf
Synonyms:	Als2cr8; ECBRC-FC1; ECBRC-FC2
Mammalian Cell Selection:	Neomycin
Vector:	pCMV6-AC-GFP (PS100010)
E. coli Selection:	Ampicillin (100 ug/mL)



[View online »](#)

ORF Nucleotide Sequence:

>MG226553 representing NM_139150
 Red=Cloning site Blue=ORF Green=Tags(s)

TTTTGTAATACGACTCACTATAGGGCGGCCGGAATTCGTCGACTGGATCCGGTACCGAGGAGATCTGCC
 GCC**CGGATCGCC**

ATGGAGCAGCGTCATTCTTAGCGGGCAACTGTGACGATGGTGAAGTCAGAAAGAGAGGCTCAGGGAT
 TCGAGCATCGGACCTGTATGGACTCTGGGATCCTTCTTTGGGCAAAATGATCCCCCTACCATTTTGCC
 CATTACTGCTCCTAAAACATATGATTCACTCACATCACAGGATATGCCAGAGACACTGACTGACACACAG
 GCCCTTATGAAGAGCAATTTTCATCTTTTGGACAAAAATGGGCAGCCTATTCAATATGATCTTCAGTCTT
 TGGGAAATTTACTGCACAAATGACAGGGATGGAGCAAGTGGCCATACCTCAGGAGCCCTTTGCAGATGA
 ACATAGCCCTCAAGATATCTCTGAAGAGAAACCCACTGGTGAAGAGCAGATGTTCTCGAAGACAGCACC
 AGCAATTACGGCCTTCGCTCACCAGCATCCCTCGTGTACCCAAAAGGCAGGAGCCAGACTTGTGAAG
 AACCTTTGCTGGCTCCTCTCCAGCCACTTCTTGTAAACACACCCATGTGGCCTGCCGTCTTAGGAGTTG
 TGAGAAAATTGGAGATTCCTACCGTGGCTACTGTGAAGTGAAGTGAAGTGAAGTGAAGTGAAGTGAAGT
 CACAAGCAGCAAAACACAGACTGTCTGGGTTACTGCCAGTCTCCAAGCCAGCCAAACCTGCCACACGCT
 TGATGTGGAAGTCTCAGTATGTCCCATATGACGGAATCCCATTTGTCAATGCAGGAAGTCGAGCTGTGGT
 AATGGAGTGTGAGTATGGACCAAGGAGAAAAGTTTTCAGTTAAAAAAAATCAGTGAAGCAAGAAAGTAGG
 TCTTGTCTCTCTATAAAGCTACTTGTCCAGCCAGGATATACATTAAGAAAGTACAGAAATTTCTGAAT
 ATAGAGTACCTACAGACCCCAAAATGACAGGAAGATAATCAGACTGGAGCAGGAGAAAGCCTTCACTAT
 GCTGAAGAAGAACCTGATGGATGCTGGTGGTGTACTTCGATGGTATGTGCAGTTACCTACACAGCAAGCT
 CATCAGTATCATGAATCAGAGACTCCTGGTGTCCCTTTGTCCCGTACCTTTTCTATGTCTCCTCTTG
 AAGAAGAGGAAGCTATAGTCAGAGATGAGAACTGTGCTTGGCCCTCTCGTCTCCACCCGCAAGTAGCGCA
 TAAGATTCAGGAAGTGTGTACAGGGAGTAGGACAAGTGTATGCAGTAAGGAAGCAGCTAAGAAAATTT
 GTGAAAAGAGAAGTGTCAAACCTGATGAGATACCTGAAAGACATAATTTATCTTATTTTCCAAGTGTAA
 ATGATATAAAAAATCATATCCATGAGGTACAGAAATCCTTGAGGACTGGAGATGTGGTATATAACTCAGA
 GATTATTCAGCAACGCTTCAGTGGACGACAGATAGTGGGAACATCCTCAGAGAGACTGTAACAGTTACA
 TTTGCAGAAGGAAATTTACTAGGAGAACCATTCCAGCAAAATGGGAACAAGTCAGACACAGACTGCTG
 TGTCTCCAGAGCCACTTCTTCTTCCACCCAAAATATTTACACACTTTCAGGCTTGAAGTTACAGCC
 AAGACTCTCCTCTCTGATGGCTACAAGCTTTGGTATCAGTAGATAGCCATGCATCCTCTAGTCCCTCT
 GGCCTTGTGGATACTGTAGGAAATGCTGAAGTGGATAACCACTCTGTACTGCTTGGTTCAGAGTCAAACC
 CTGGGACAGATACATGCCTAACCCAAGACAACAGCACCTCCTCCACGGGCCACTCCAGAATCAGT
 TCCGAATCCAGTTGCAGAGGATCAGCTGCTGGAAGGTGAAGATGTTGAGGATGCAGGGAATCCGGAAGGA
 AGTGTAAATAGGACTCTGTTGGGAGATGTACAAACCGTTCCAATACAGATCATAGACAGCCGTCAGTGC
 TTGTTGAAGAAAGTCTGTCTAAGAACCAAGTAAACAAGAAACCAATGAGCCAACACTGTCTACAGAAGC
 AAAAATTTCTGGACTGTAAAAAATATCTGCTACA

ACGCGTACGCGGCCGCTCGAG - GFP Tag - GTTTAA

Protein Sequence: >MG226553 representing NM_139150
 Red=Cloning site Green=Tags(s)

MEQRHSLAGNCDDGEKSEREAQGFHRTCMDSGDPSFGQNDPPTILPITAPKTYDSLTSQDMPETLTDTQ
 ALHEEQFHLLDQNGQPIQYDLQSLGNSTAQMTGMEQVAIPQEPFADEHSPQDISEEKPTGVRADVLEDST
 SNYGLRSPASLVLPKKAGARLVEEPLLAFLQPLSCNTPMWACRLRSCEKIGDSYRGYCVSETELESVLTFF
 HKQQTQTVWGTQRQSPSPAKPATRLMWKSQYVYPYDGIPFVNAGSRAVVMQCQYGPRRKGFLKKISEQESR
 SCHLYKATCPARIYIKKVKQKFPEYRVPTDPQIDRKKIIRLEQEKAFTMLKKNLMDAGGVLRWYVQLPTQQA
 HQYHESETPGVPLSPSPFPMSPLEEEEEAIVRDENCALPSRLHPQVAHKIQELVSQGVQVYAVRKQLRKF
 VERELFKPDEIPERHNL SYFPTVNDIKNHIHEVQKSLRTGDVVYNSEIIPATLQWTTDSGNILRETIVT
 FAEGNLLGEPISKMGTSQTQTAVSPELSSFPKIFTHFQALKLQPRLSSPDGSQALVSDSHASSSP
 GLVDTVGNAEVDNHSVLLGQSQNPQTDCLTQDNSTSSSTGHLPEVSNPVAEDQLLEGEDVEDAGNPEG
 SVNRTLLGDVQTVPIQIIDSRLVVEESLSKNQVKQETNEPTLSTEAKTFLDCKKISAT

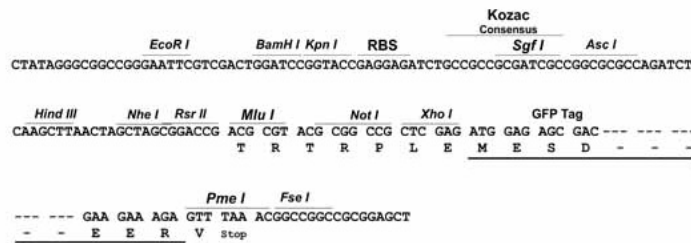
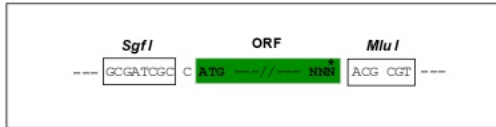
TRTRPLE - GFP Tag - V

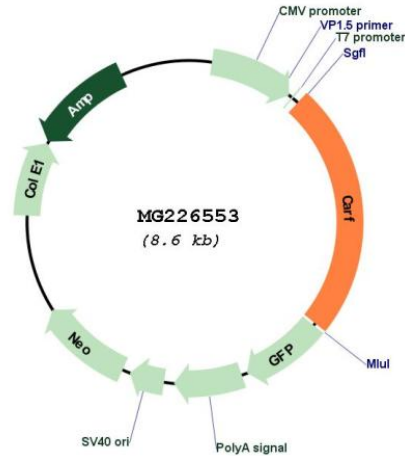
Restriction Sites:

Sgfl-MluI

Cloning Scheme:

Cloning sites used for ORF Shuttling:



Plasmid Map:


ACCN: NM_139150

ORF Size: 2067 bp

OTI Disclaimer: The molecular sequence of this clone aligns with the gene accession number as a point of reference only. However, individual transcript sequences of the same gene can differ through naturally occurring variations (e.g. polymorphisms), each with its own valid existence. This clone is substantially in agreement with the reference, but a complete review of all prevailing variants is recommended prior to use. [More info](#)

OTI Annotation: This clone was engineered to express the complete ORF with an expression tag. Expression varies depending on the nature of the gene.

Components: The ORF clone is ion-exchange column purified and shipped in a 2D barcoded Matrix tube containing 10ug of transfection-ready, dried plasmid DNA (reconstitute with 100 ul of water).

Reconstitution Method:

1. Centrifuge at 5,000xg for 5min.
2. Carefully open the tube and add 100ul of sterile water to dissolve the DNA.
3. Close the tube and incubate for 10 minutes at room temperature.
4. Briefly vortex the tube and then do a quick spin (less than 5000xg) to concentrate the liquid at the bottom.
5. Store the suspended plasmid at -20°C. The DNA is stable for at least one year from date of shipping when stored at -20°C.

RefSeq: [NM_139150.5](#), [NP_631889.1](#)

RefSeq Size: 2604 bp

RefSeq ORF: 2070 bp

Locus ID: 241066

UniProt ID: [Q8VHI4](#)

Cytogenetics: 1 C2

Gene Summary: Acts as a transcriptional activator that mediates the calcium- and neuron-selective induction of BDNF exon III transcription. Binds to the consensus calcium-response element CaRE1 5'-CTATTCGAG-3' sequence (By similarity).[UniProtKB/Swiss-Prot Function]