

## Product datasheet for **MG226547**

### **Pth1r (NM\_001083936) Mouse Tagged ORF Clone**

#### **Product data:**

Product Type:	Expression Plasmids
Product Name:	Pth1r (NM_001083936) Mouse Tagged ORF Clone
Tag:	TurboGFP
Symbol:	Pth1r
Synonyms:	PPR; Pthr; Pthr1
Mammalian Cell Selection:	Neomycin
Vector:	pCMV6-AC-GFP (PS100010)
E. coli Selection:	Ampicillin (100 ug/mL)



[View online »](#)

**ORF Nucleotide Sequence:**

>MG226547 representing NM\_001083936  
 Red=Cloning site Blue=ORF Green=Tags(s)

TTTTGTAATACGACTCACTATAGGGCGGCCGGGAATTCGTCGACTGGATCCGGTACCGAGGAGATCTGCC  
 GCC**CGGATCGCC**

ATGGGGACCGCCCGGATCGCACCCAGCCTGGCGCTCCTTCTCTGTGCCAGTGCTCAGCTCCGCATATG  
 CGCTGGTGGACGACGACGATGTCTTTACCAAAGAGGAACAGATTTTCTGCTGCACCGTGCCAGGCGCA  
 ATGTGACAAGCTGCTCAAGGAAGTTCTGCACACAGCAGCCAACATAATGGAGTCAGACAAAGGGTGGACG  
 CCAGCATCTACGTCAAGGAAGCCAGGAAAGAGAAGGCACCGGAAAGTTCTACCCGAGTCTAAAGAGA  
 ACAAGGATGTGCCACCGGCAGCAGGCGCCGAGGGCGTCCCTGTCTGCCAGAGTGGGACAACATCGTTTG  
 CTGGCCATTGGGGGACCCAGGTGAAGTGGTGGCAGTACCTTGCCGATTACATTTATGACTTCAACCAC  
 AAAGGCCATGCCTACAGACGCTGCGACCGCAATGGCAGCTGGGAGGTGGTCCAGGGCACAACCGGACGT  
 GGGCCAACACAGCGAGTGCCTCAAGTTCATGACCAATGAGACTCGGGAACGGGAGGATTTGACCGCCT  
 GGGCATGATCTACACCGTGGGATATTCCATGTCTCTTGCCTCCCTCACCGTGGCTGTGCTCATCCTAGCC  
 TATTTTAGGGCGGTGCACTGCACGCGCAACTACATCCACATGCACATGTTCTGTGCTTTATGCTGCGCG  
 CCGCGAGCATCTTCGTGAAGGACGCTGTGCTCTACTCTGGCTTACGCTGGATGAGGCGGAGCGCCTCAC  
 GGAGGAAGAGTTGCATATCATCGCGCAGGTGCCGCCTCCGCCCGCGCTGCCGCCGTTGGCTACGCTGGC  
 TGCCGTGTGGCCGTGACCTTCTTCTCTACTTCTGGCTACCAACTACTACTGGATTCTGGTGGAGGGAC  
 TGTACTTACACAGCCTCATCTTCATGGCCTTTTCTCAGAGAAGAAGTATCTGTGGGGCTTACCATCTT  
 TGGCTGGGGTCTGCCGGTGTCTTCGTGGCTGTGTGGTGGTGTGAGCAACCTTGGCCAACACTGGG  
 TGCTGGGACCTGAGCTCTGGGCACAAGAAGTGGATCATCCAGGTGCCATCCTGGCATCTGTTGTGCTCA  
 ACTTCATCCTCTTATCAACATCATCCGGGTGCTTGCCACTAAGCTTCGGGAGACCAATCGGGCCGGTG  
 TGACACCAGGCAGCAGTACCGGAAGCTGCTCAGGTCCACGTTGGTCTTGTGCCACTCTTCGGTGTCCAC  
 TACACCGTCTTACGGCCTTGGCGTACACCGAGGTCTCAGGGACACTGTGGCAGATCCAGATGCACTATG  
 AGATGCTCTTCAACTCCTCCAGGGATTTTTTGTGCCATCATATACTGTTTCTGCAATGGTGGAGGTGCA  
 GGCAGAGATTAGGAAGTCTTGGAGCCGCTGGACACTGGCATTGGACTTCAAGCGTAAAGCACGAAGTGGG  
 AGTAGCAGCTACAGCTATGGCCAATGGTGTACACACGAGTGTGACCAATGTGGCCCCCGTGCAGGAC  
 TCAGCCTTCCCCTTAGCCCCGCTGCTTCTGCCACCACCAATGGCCACTCCAGCTGCCTGGCCACGC  
 CAAGCCGGGCGCTCCAGCCATTGAGAACGAAACCATAACCAGTTACTATGACAGTTCCTCAAGGACGACGGC  
 TTCTTAATGGCTCCTGCTCGGGTCTGGATGAGGAGGCCTCTGGGTCTGCGCGGCCACTCCATTGTTGC  
 AGGAAGAATGGGAAACAGTCATG

**ACGCGT**ACGCGGCCGCTCGAG – GFP Tag – GTTTAA

**Protein Sequence:**

>MG226547 representing NM\_001083936  
 Red=Cloning site Green=Tags(s)

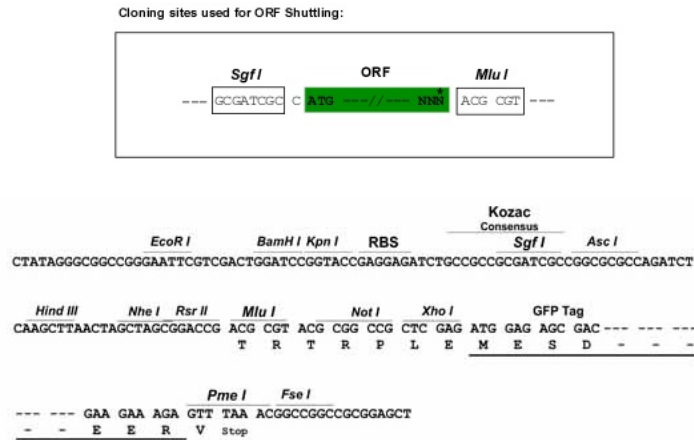
MGTARIAPSLALLLCCPVLSSAYALVDADDVFTKEEQIFLLHRAQAQCDKLLKEVLHTAANIMESDKGWT  
 PASTSGKPRKEKAPGKFYPESENKDVPTGSRRRGRPCLPEWDNIVCWPLGAPGEVAVPCPDYIYDFNH  
 KGHAYRRCDRNGSWEVVPGHNRWANYSECLKFMTNETREREVFDRLGMIYTVGYSMSLASLTVAVLILA  
 YFRRLHCTRNYIHMHMLFSMLRAASIFVKDAVLYSGFTLDEAERLTEEELHIIAQVPPPPAAAAVGYAG  
 CRVAVTFFLYFLATNYYWILVEGLYLHSLIFMAFFSEKKYLWGF TIFGWGLPAVFVAVWVGVVATLANTG  
 CWDLSSGHKKWIIQVPILASVVLNFILFINIIRVLATKLRNAGRCDTRQYRKLRLSTLVLVPLFGVH  
 YTVFMALPYTEVSGTLWQIQMHYEMLFNSFQGFVAIIYCFCNQEVQAEIRKSWSRWTLALDFKRKARSG  
 SSSYSYGPMSVHTSVTNVGPRAGLSLPLSPRLLPATTNGHSQLPHAKPGAPAIENETIPVTMTVPKDDG  
 FLNGSCSGLDEEASGSARPPPLLQEEWETVM

**TRTRPLE** – GFP Tag – V

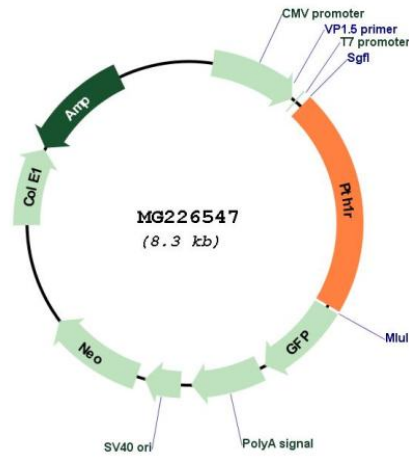
**Restriction Sites:**

Sgfl-MluI

Cloning Scheme:



Plasmid Map:



ACCN: NM\_001083936

ORF Size: 1773 bp

<b>OTI Disclaimer:</b>	The molecular sequence of this clone aligns with the gene accession number as a point of reference only. However, individual transcript sequences of the same gene can differ through naturally occurring variations (e.g. polymorphisms), each with its own valid existence. This clone is substantially in agreement with the reference, but a complete review of all prevailing variants is recommended prior to use. <a href="#">More info</a>
<b>OTI Annotation:</b>	This clone was engineered to express the complete ORF with an expression tag. Expression varies depending on the nature of the gene.
<b>Components:</b>	The ORF clone is ion-exchange column purified and shipped in a 2D barcoded Matrix tube containing 10ug of transfection-ready, dried plasmid DNA (reconstitute with 100 ul of water).
<b>Reconstitution Method:</b>	<ol style="list-style-type: none"><li>1. Centrifuge at 5,000xg for 5min.</li><li>2. Carefully open the tube and add 100ul of sterile water to dissolve the DNA.</li><li>3. Close the tube and incubate for 10 minutes at room temperature.</li><li>4. Briefly vortex the tube and then do a quick spin (less than 5000xg) to concentrate the liquid at the bottom.</li><li>5. Store the suspended plasmid at -20°C. The DNA is stable for at least one year from date of shipping when stored at -20°C.</li></ol>
<b>RefSeq:</b>	<a href="#">NM_001083936.1</a> , <a href="#">NP_001077405.1</a>
<b>RefSeq Size:</b>	2269 bp
<b>RefSeq ORF:</b>	1776 bp
<b>Locus ID:</b>	19228
<b>UniProt ID:</b>	<a href="#">P41593</a>
<b>Cytogenetics:</b>	9 60.56 cM
<b>Gene Summary:</b>	Receptor for parathyroid hormone and for parathyroid hormone-related peptide (PubMed:8197183). The activity of this receptor is mediated by G proteins which activate adenylyl cyclase and also a phosphatidylinositol-calcium second messenger system. [UniProtKB/Swiss-Prot Function]