

## Product datasheet for **MG226534**

### **Btrc (NM\_001037758) Mouse Tagged ORF Clone**

#### **Product data:**

Product Type:	Expression Plasmids
Product Name:	Btrc (NM_001037758) Mouse Tagged ORF Clone
Tag:	TurboGFP
Symbol:	Btrc
Synonyms:	b-TrCP; beta-TrCP; Beta-Trcp1; E3RS-IkappaB; E3RSIkappaB; Fbw1a; FWD1; HOS; Slimb
Mammalian Cell Selection:	Neomycin
Vector:	pCMV6-AC-GFP (PS100010)
E. coli Selection:	Ampicillin (100 ug/mL)



[View online »](#)

**ORF Nucleotide Sequence:**

>MG226534 representing NM\_001037758  
 Red=Cloning site Blue=ORF Green=Tags(s)

TTTTGTAATACGACTCACTATAGGGCGGCCGGAATTCGTCGACTGGATCCGGTACCGAGGAGATCTGCC  
 GCC**CGCATCGCC**

ATGGACCCGGCAGAGCGGTGCTGCAGGAGAAAGCGCTTAAGTTTATGTGCTCTATGCCAGGTCTCTGT  
 GGCTGGGCTGCTCCAGCCTGGCGGACAGCATGCCTTCGCTGCGATGCCTGTATAACCCAGGGACTGGCGC  
 ACTCACAGCTTTCCAGAATTCCTCAGAGAGAGAAGACTGTAATAATGGCGAACCCCTAGGAAGATAATA  
 CCAGAGAAGAATTCACCTAGACAGACTTACAACAGCTGTGCCAGGCTTTCATAAACCAAGAGACAGTAT  
 GTCTAACAAAGCACTGCTATGAAGACTGAAAATTGTGTGGCCAAAGCCAACTTGCCAATGGCACTCCAG  
 CATGATTGTGCCAAGCAGCGGAACTCTCAGCAAGCTATGAGAAGGAAAAGGAGCTGTGTGTCAAGTAT  
 TTTGAGCAGTGGTCAGAGTCTGATCAAGTGAATTTGTAGAACACCTTATATCCCAATGTGCTACTACC  
 AGCATGGGCACATCAACTCCTACCTAAAACCTATGCTGCAGAGGGATTCATAACTGCCTGCCAGCAGC  
 GGGTCTGGACCACATCGCTGAGAACATTCTGTCATACTTGGACGCCAAGTCACTGTGTGCTGCTGAGCTC  
 GTGTGCAAGGAATGGTACCGCTGACGTCGGACGGCATGCTGTGGAAAAAGCTCATCGAGAGGATGGTCA  
 GGACGGACTCTCTGTGGCGAGGCCTGGCAGAGCGCAGAGGCTGGGGACAGTACTTATCAAAAAACAACC  
 TCCTGATGAGAACGCTCCTCCAACTCCTTTTATAGAGCGCTTTATCCTAAAATCATACAAGACATTGAG  
 ACAATAGAGTCCAATTGGAGATGTGGGCGACATAGTTTACAGAGAATCCACTGCCGGAGTGAAACAAGTA  
 AAGGGGTTTACTGTTTACAGTACGACGACCAGAAGATAGTCAGCGGCCTTCGAGACAACACCATCAAGAT  
 CTGGGATAAAAGCACACTGGAATGCAAGCGGATTCTCACGGGCCACACGGGCTCCGTCTGTGTCTGCAG  
 TACGATGAGAGGGTGATCATCACAGGCTCCTCAGACTCCACCGTCAGAGTGTGGGATGTAATGCAGGTG  
 AGATGCTAAACACATTGATTCCACTGTGAAGCCGTTCTGCACCTGCGCTTCAATAATGGCATGATGGT  
 GACCTGTTCCAAAGACCGTTCATCGCTGTGTGGGATATGGCTTCCCAACTGACATCACCTCAGGAGG  
 GTGCTGGTGGACACCGAGCTGCGGTCAATGTTGTAGACTTTGATGACAAGTACATCGTTTCTGCCTCTG  
 GAGATAGAACCATAAAGGTGTGGAACACAAGTACCTGTGAATTCGTAAGGACCCTAAATGGGCACAAGCG  
 TGGCATCGCTGTTTGCAGTACAGAGACAGGCTGGTGGTGGAGCGGCTCCTCTGACAACACCATCAGGCTG  
 TGGGACATAGAGTGTGGAGCATGCCTGCGAGTGTGGAGGGCCATGAGGAGTTGGTACGCTGCATTTCGAT  
 TTGATAACAAAAGGATAGTGAGCGGAGCCTATGATGGGAAAATTAAGTGTGGGATCTTATGGTGTCTT  
 GGACCCGCGTGTCCAGCAGGACTCTCTGTCTGCGGACACTTGTGGAGCATTCTGGAAGAGTTTCCGC  
 CTCAGTTTGTGTAATCCAGATTGTGAGTACATGATGACACAATTCTCATCTGGGACTTCTCTGA  
 ATGATCCAGCTGCTCACGCTGAACCGCCCCGCTCCCCTTCTCGGACATACACTACATCTCCAGA

**ACGCGTACGCGGCCGCTCGAG** – GFP Tag – GTTTAA

**Protein Sequence:**

>MG226534 representing NM\_001037758  
 Red=Cloning site Green=Tags(s)

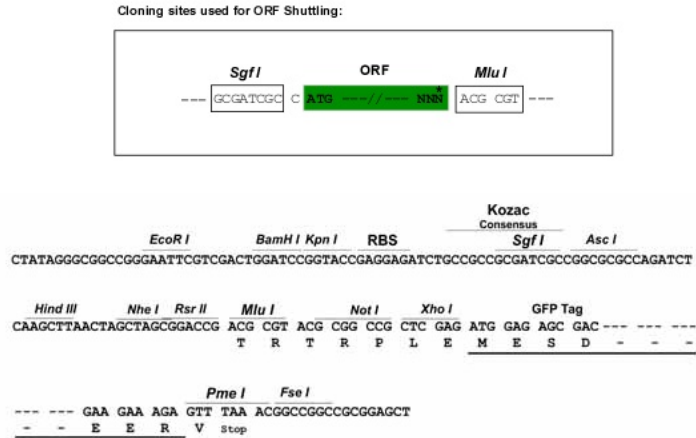
MDPAEAVLQEKALKFMCSMPRSLWLGCSSLADSMPSLRCLYNPGTGALTAFAQNSSEREDCNNGEPPrkII  
 PEKNSLRQTYNSCARLcINQETVCLTSTAMKTENCvAKKLANGTSSMIVPKQRKLsASyEKEKELCVKY  
 FEQWSESDQVEFVEHLISQMCHYQHGHINSYLKPLQRDFITALPARGLDHIAENILSYLDAKSLCAAEL  
 VCKEYWRVTSdGMLWKKLIERMVRTDSLWRGLAERRGWGQYLFKNKPPDENAPPNSFYRALYPKIIQDIE  
 TIESNWRCGRHSLQRIHCRSETSkgvYCLQYDDQKIVSGLRDNTIKIWDKSTLECKRILTGHTGSVLCLO  
 YDERVITGSSDSTVRVVDVNAGEMLNTLIHhCEAVLHLRFNNGMMVTCskDRSIAVWDMASPTDITLRR  
 VLvGHRAAVNVVDFDDKIVYSASGDRTIKvWNTSTCEfVRTLNghKRGIAcLQYRDRLVvSGSSDNTIRL  
 WDIeCGACLRvLEgHEELVRCIRfDNKRIvSGAYDgKIKvWDLMAALDPRAPAGTLCLRTLVEHSGRVFR  
 LQfDEFQIVSSSHDDTILIWDFLNDPAHAHAEPPrSPSRTYTYISR

**TRTRPLE** – GFP Tag – V

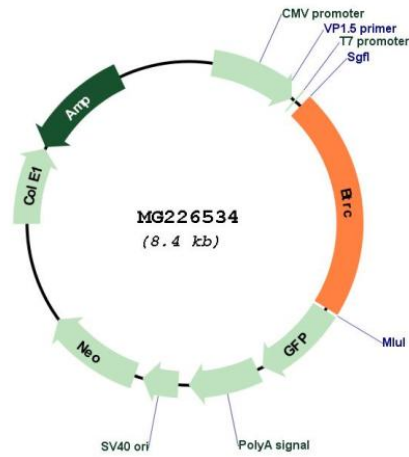
**Restriction Sites:**

SgfI-MluI

Cloning Scheme:



Plasmid Map:



ACCN: NM\_001037758  
 ORF Size: 1815 bp

<b>OTI Disclaimer:</b>	The molecular sequence of this clone aligns with the gene accession number as a point of reference only. However, individual transcript sequences of the same gene can differ through naturally occurring variations (e.g. polymorphisms), each with its own valid existence. This clone is substantially in agreement with the reference, but a complete review of all prevailing variants is recommended prior to use. <a href="#">More info</a>
<b>OTI Annotation:</b>	This clone was engineered to express the complete ORF with an expression tag. Expression varies depending on the nature of the gene.
<b>Components:</b>	The ORF clone is ion-exchange column purified and shipped in a 2D barcoded Matrix tube containing 10ug of transfection-ready, dried plasmid DNA (reconstitute with 100 ul of water).
<b>Reconstitution Method:</b>	<ol style="list-style-type: none"> <li>1. Centrifuge at 5,000xg for 5min.</li> <li>2. Carefully open the tube and add 100ul of sterile water to dissolve the DNA.</li> <li>3. Close the tube and incubate for 10 minutes at room temperature.</li> <li>4. Briefly vortex the tube and then do a quick spin (less than 5000xg) to concentrate the liquid at the bottom.</li> <li>5. Store the suspended plasmid at -20°C. The DNA is stable for at least one year from date of shipping when stored at -20°C.</li> </ol>
<b>RefSeq:</b>	<a href="#">NM_001037758.2</a> , <a href="#">NP_001032847.2</a>
<b>RefSeq Size:</b>	6358 bp
<b>RefSeq ORF:</b>	1818 bp
<b>Locus ID:</b>	12234
<b>UniProt ID:</b>	<a href="#">Q3ULA2</a>
<b>Cytogenetics:</b>	19 C3

**Gene Summary:**

Substrate recognition component of a SCF (SKP1-CUL1-F-box protein) E3 ubiquitin-protein ligase complex which mediates the ubiquitination and subsequent proteasomal degradation of target proteins. Recognizes and binds to phosphorylated target proteins (PubMed:10097128, PubMed:16371461, PubMed:18782782, PubMed:9859996, PubMed:9990853, PubMed:21911472). SCF(BTRC) mediates the ubiquitination of phosphorylated NFKB, ATF4, CDC25A, DLG1, FBXO5, PER1, SMAD3, SMAD4, SNAI1 and probably NFKB2. SCF(BTRC) mediates the ubiquitination of CTNNB1 and participates in Wnt signaling (By similarity). SCF(BTRC) mediates the ubiquitination of NFKBIA, NFKBIB and NFKBIE; the degradation frees the associated NFKB1 to translocate into the nucleus and to activate transcription (PubMed:9859996, PubMed:10097128). Ubiquitination of NFKBIA occurs at 'Lys-21' and 'Lys-22' (PubMed:9859996, PubMed:10097128). SCF(BTRC) mediates the ubiquitination of CEP68; this is required for centriole separation during mitosis (By similarity). SCF(BTRC) mediates the ubiquitination and subsequent degradation of nuclear NFE2L1 (PubMed:21911472). Has an essential role in the control of the clock-dependent transcription via degradation of phosphorylated PER1 and PER2 (PubMed:18782782). May be involved in ubiquitination and subsequent proteasomal degradation through a DBB1-CUL4 E3 ubiquitin-protein ligase (By similarity). Required for activation of NFKB-mediated transcription by IL1B, MAP3K14, MAP3K1, IKBKB and TNF (By similarity). Required for proteolytic processing of GLI3 (PubMed:16371461). Mediates ubiquitination of REST, thereby leading to its proteasomal degradation (By similarity).[UniProtKB/Swiss-Prot Function]