

## Product datasheet for **MG226530**

### Tfap2a (NM\_001122948) Mouse Tagged ORF Clone

#### Product data:

**Product Type:** Expression Plasmids  
**Product Name:** Tfap2a (NM\_001122948) Mouse Tagged ORF Clone  
**Tag:** TurboGFP  
**Symbol:** Tfap2a  
**Synonyms:** A; AP; AP-2; Ap-2 (a); Ap2; AP2alpha; Ap2tf; Tcfa; Tcfap2a  
**Mammalian Cell Selection:** Neomycin  
**Vector:** pCMV6-AC-GFP (PS100010)  
**E. coli Selection:** Ampicillin (100 ug/mL)  
**ORF Nucleotide Sequence:** >MG226530 representing NM\_001122948  
 Red=Cloning site Blue=ORF Green=Tags(s)

TTTTGTAATACGACTCACTATAGGGCGGCCGGAATTCGTCGACTGGATCCGGTACCGAGGAGATCTGCC  
 GCC**CGATCGCC**

ATGTTAGTTCACAGTTTTTCAGCTATGGACCGTCACGACGGCACCAGCAACGGGACGGCACGGTTGCCCC  
 AGCTGGGCACTGTAGGTCAATCTCCCTACACCAGCGCCCCGCGCTGTCCCACACCCTAATGCCGACTT  
 CCAGCCTCCCTACTTCCCCCGCCCTACCAGCCTATCTACCCCCAGTCGCAAGATCCTTACTCCCACGTC  
 AACGACCCCTACAGCCTGAATCCTCTGCACGCCAGCCGAGCCGAGCACCCGGGCTGGCCGGTCCAGA  
 GGCAGAGCCAGGAATCTGGGCTTTACACACACACCGGGGCTTACCCACCAACTGTCCGGCCTGGACCC  
 TCGCAGGGACTATCGGGCGCACGAGGACCTCTTGACGGCCCGCACGGGCTCGGCTGTGGCTCGGGGAC  
 CTCCCGATCCACTCCTTACCTCACGCCATCGAGGACGTCCCGCACGTAGAAGACCCGGGTATTAACATCC  
 CAGATCAAAGTGAATTAAGAAAGGCCCGTGTCCCTGTCCAAGTCCAACAGCAATGCTGTCTCCGCCAT  
 CCCTATTAACAAGGACAACCTCTTCGGTGGCGTGGTAAACCCCAACGAAGTCTTCTGTTCAGTTCGGGT  
 CGCCTGTGCTCCTCAGCTCCACCTCGAAGTACAAGGTACGGTGGCGGAAGTACAGCGGCGCCTCTCAC  
 CGCCCGAGTGTCTAACGCGTCGCTCCTGGGCGGAGTACTGCGGAGAGCGAAGTCTAAGAATGGAGGGAG  
 ATCTTTAAGAGAAAAACTGGACAAGATAGGATTGAATCTGCCAGCAGGGAGACGTAAGCTGCCAACGTT  
 ACCCTCCTCAGTCACTAGTGAAGGAGAAGCCGTCCACCTAGCCAGGGACTTTGGGTACGTGTCCGAAA  
 CTGAATTTCTGCAAAGCAGTAGCAGAATTTCTCAACCGACAACATTCGATCCCAATGAGCAAGTGGC  
 AAGAAAAAATGCTCCTGGCCAAAAACAGATCTGCAAAGAGTTCACTGACCTGTGGCTCAGGACCGA  
 TCTCCCCTGGGAACTCGCGGCCAATCTATCCTGGAGCCTGGCATCCAGAGTTGCTTGACCCACTTCA  
 ACCTCATCTCCATGGCTTCGGCAGCCCGCGGTGTGTGACGGTTACGGCCCTGCAGAACTATCTCAC  
 CGAGGCCCTCAAGGCATGGACAAAATGTACCTCAGCAACAACCCCAACGCCACACGGACAACAGCGCC  
 AAAAGCAGTGACAAGAAGAGAAAACACAGAAAG

AGCGGACCGACGCGTACGCGGCCGCTCGAG - GFP Tag - GTTTAA



[View online »](#)

**Protein Sequence:** >MG226530 representing NM\_001122948  
Red=Cloning site Green=Tags(s)

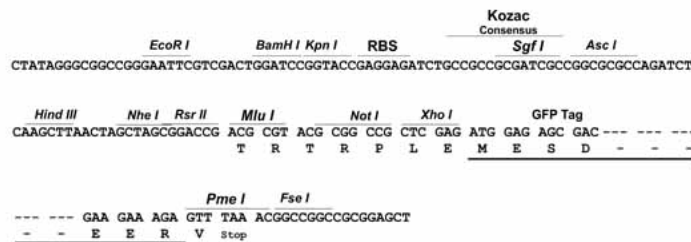
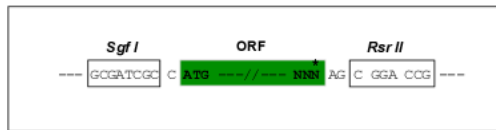
MLVHSFSAMDRHDGTSNGTARLPQLGTVGQSPYTSAPPLSHTPNADFQPPYFPPPYQPIYPQSQDPYSHV  
 NDPYSLNPLHAQPQPQHPGWPGQRQSQESGLLHHRGLPHQLSGLDPRRDYRRHEDLLHGPHGLGSLGD  
 LPIHSLPHAIEDVPHVEDPGINIPDQTVIKKGPVSLSKSNSNAVSAIPINKDNLFGGVVNPNEVFCVPG  
 RLSLLSSTSKYKVTVAEVQRRSPPECLNASLLGGVLRRAKSKNGGRSLREKLDKIGLNLPAGRRKAANV  
 TLLTSLVEGEAVHLARDFGYVCETEFPAKAVAEEFLNRQHSDPNEQVARKNMLLATKQICKEFTDLLAQDR  
 SPLGNSRNPPILEPGIQSCLTHFNLI SHGFGSPAVCAAVTALQNYL TEALKAMDKMYLSNNPNSHTDNSA  
 KSSDKKEEKHRK

SGPTRRRLE - GFP Tag - V

**Restriction Sites:** SgfI-RsrII

**Cloning Scheme:**

Cloning sites used for ORF Shuttling:



**ACCN:** NM\_001122948

**ORF Size:** 1293 bp

**OTI Disclaimer:** The molecular sequence of this clone aligns with the gene accession number as a point of reference only. However, individual transcript sequences of the same gene can differ through naturally occurring variations (e.g. polymorphisms), each with its own valid existence. This clone is substantially in agreement with the reference, but a complete review of all prevailing variants is recommended prior to use. [More info](#)

**OTI Annotation:** This clone was engineered to express the complete ORF with an expression tag. Expression varies depending on the nature of the gene.

**Components:** The ORF clone is ion-exchange column purified and shipped in a 2D barcoded Matrix tube containing 10ug of transfection-ready, dried plasmid DNA (reconstitute with 100 ul of water).

**Reconstitution Method:**

1. Centrifuge at 5,000xg for 5min.
2. Carefully open the tube and add 100ul of sterile water to dissolve the DNA.
3. Close the tube and incubate for 10 minutes at room temperature.
4. Briefly vortex the tube and then do a quick spin (less than 5000xg) to concentrate the liquid at the bottom.
5. Store the suspended plasmid at -20°C. The DNA is stable for at least one year from date of shipping when stored at -20°C.

**RefSeq:** [NM\\_001122948.2](#)

**RefSeq Size:** 3114 bp

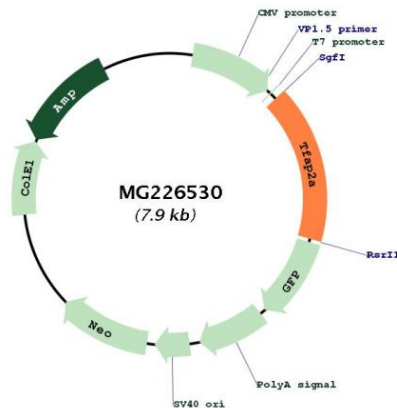
**RefSeq ORF:** 1296 bp

**Locus ID:** 21418

**Cytogenetics:** 13 20.01 cM

**Gene Summary:** This gene is a member of the activator protein 2 (AP-2) transcription factor family. The protein encoded by this gene can act as both an activator and repressor of gene transcription, and plays an important role in early embryogenesis, specifically in cranial development. This protein forms both homodimers and heterodimers, and binds to a GC-rich consensus sequence found in some promoters and enhancers. Disruption of this gene causes perinatal death, with neural tube, craniofacial, and limb mesenchyme defects. Alternative splicing results in multiple transcript variants that encode multiple protein isoforms. [provided by RefSeq, Sep 2014]

**Product images:**



Circular map for MG226530