

Product datasheet for **MG226527**

Chrm4 (NM_007699) Mouse Tagged ORF Clone

Product data:

| | |
|---------------------------|--|
| Product Type: | Expression Plasmids |
| Product Name: | Chrm4 (NM_007699) Mouse Tagged ORF Clone |
| Tag: | TurboGFP |
| Symbol: | Chrm4 |
| Synonyms: | Chrm-4; M4 |
| Mammalian Cell Selection: | Neomycin |
| Vector: | pCMV6-AC-GFP (PS100010) |
| E. coli Selection: | Ampicillin (100 ug/mL) |



[View online »](#)

ORF Nucleotide Sequence:

>MG226527 representing NM_007699
 Red=Cloning site Blue=ORF Green=Tags(s)

TTTTGTAATACGACTCACTATAGGGCGGCCGGGAATTCGTCGACTGGATCCGGTACCGAGGAGATCTGCC
 GCC**CGGATCGCC**

ATGGCGAACTTCACACCTGTCAATGGCAGCTCAGCCAATCAGTCTGTGCGCTGGTCAACAGCCACA
 ACCACCTGGAGACAGTGGAGATGGTGTTCATTGCGACAGTGAAGTTCCTGAGCCTGGTACTGTGGT
 GGGTAACATCCTGGTGATGCTGTCCATCAAGGTCAACAGGCAGTTGCAGACAGTCAACAATACTTCTCTG
 TTCAGCCTGGCGTGTGCAGATCTCATATAGGGCGTCTCTATGAACCTTTACACCTTATAACATCATCA
 AGGGCTACTGGCCCTGGGTGCCGTGGTCTGTGACCTGTGGTGGCCCTGGACTATGTGGTGAACAATGC
 CTCTGTCAAGCCTTCTCATCATCAGCTTTGACCGCTATTTCTGCGTCACCAAGCCCTCACCTATCCA
 GCCCGCCGACTACTAAGATGGCAGGCCTCATGATTGCAGCCGCTGGGTCTTGCCTTTGACTCTGGG
 CCCCTGCCATCTGTTCTGGCAGTTTGGTGGGCAAGAGGACAGTGCCTGATAACCAAGTCTTCATCCA
 GTTCTTGTCCAACCCGGCGGTGACCTTCGGCACAGCCATTGCTGCCTTACCTGCCTGTGGTCAATG
 ACGGTGCTGTATATTCATATCTCGCTGGCCAGCCGAGCCGCTGTTCAAGCATCGACCCGAGGGCCCA
 AGGAGAAGAAGGCCAAGACTCTGGCTTCTCAAGAGCCCTCTGATGAAGCCGAGCATTAAAGAACTCC
 ACCAGGGGGCGCTTCTCGAGAGGAAGTGCACAGCGGAAGCTAGAAGAGGCTCCTCCGCCAGCCCTGCC
 CCGCTCCACGCCAGTGGCTGACAAGGACACTTCCAATGAGTCCAGCTCAGGCAGTGCACCCAGAACA
 CCAAGGAACGGCCACCCACAGAGCTGTCCACCACAGAGCCGCCACCACACAGCGCTGCCCGCTCTAC
 CCTGCAGCCACGAACCTCAACCCAGCTCCAAGTGGTCCAAGATCCAATTTGTGACAAAGCAGACAGGC
 AGTGAATGTGTGACTGCCATCGAGATCGTACCTGCCACGCCAGTGGTATGCGCCAGCAGCCAATGTGG
 CCCGAAAGTTTGGCAGCATCGCTCGTAACCAGGTGCGCAAGAAGCGGCAGATGGCGGCCGGGAGCGCAA
 AGTGACTCGGACAATCTTTGCCATTCTGCTGGCTTTCATCCTCACCTGGACACCCTACAATGTATGGTC
 CTGGTGAACACCTTTTGGCAGAGCTGTATCCCCGAAAGGGTGTGGTCCATCGGCTACTGGCTCTGTACG
 TCAACAGCACGATCAACCCTGCCTGCTATGCACTCTGCAATGCCACTTTCAAAAAGACCTTCCGGCACCT
 TTTGCTGTGCCAGTATCGGAACATCGGCACAGCCAGG

ACGCGTACGCGGCCGCTCGAG - GFP Tag - GTTTAA

Protein Sequence:

>MG226527 representing NM_007699
 Red=Cloning site Green=Tags(s)

MANFTPVNGSSANQSVRLVTTAHNHLETVMVFIAITVTGSLSLVTVVGNILVMLSIKVNRLQTVNNYFL
 FSLACADLIIGAFSMNL YTL YI I KGYWPLGAVVCDLWLALDYVSNASVMNLLIISFD RYFCVTKPLTYP
 ARRTTKMAGLMIAAAWVLSFVLWAPAILFWQFVVGKRTVPDNQCFIQFLSNPAVTFGTAI AAFYLPVVIM
 TVLYIHISLASRSRVHKHRPEGPKEKKAKTLAFLKSPLMKPSIKKPPPGGASREELRNGKLEEAPPPALP
 PPPRPVADKDTSNESSSGSATQNTKERPPTELSTTEAATPALPAPTLQPRTLNPAKWSKIQIVTKQTG
 SECVTAIEIVPATPAGMRPAANVARKFASIARNQVRKKRQMAARERKVTRTIFAILLAFILTWTPYNVMV
 LVNTFCQSCIPERVWSIGYWLVCYNSTINPACYALCNATFKKTRHLLLCQYRNIGTAR

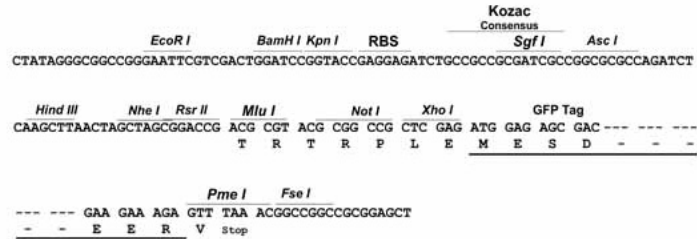
TRTRPLE - GFP Tag - V

Restriction Sites:

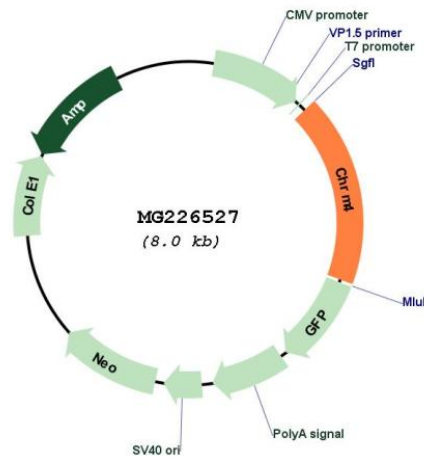
Sgfl-Mlul

Cloning Scheme:

Cloning sites used for ORF Shutting:



Plasmid Map:



ACCN: NM_007699
 ORF Size: 1437 bp

| | |
|-------------------------------|--|
| OTI Disclaimer: | <p>Due to the inherent nature of this plasmid, standard methods to replicate additional amounts of DNA in E. coli are highly likely to result in mutations and/or rearrangements. Therefore, OriGene does not guarantee the capability to replicate this plasmid DNA. Additional amounts of DNA can be purchased from OriGene with batch-specific, full-sequence verification at a reduced cost. Please contact our customer care team at custsupport@origene.com or by calling 301.340.3188 option 3 for pricing and delivery.</p> <p>The molecular sequence of this clone aligns with the gene accession number as a point of reference only. However, individual transcript sequences of the same gene can differ through naturally occurring variations (e.g. polymorphisms), each with its own valid existence. This clone is substantially in agreement with the reference, but a complete review of all prevailing variants is recommended prior to use. More info</p> |
| OTI Annotation: | <p>This clone was engineered to express the complete ORF with an expression tag. Expression varies depending on the nature of the gene.</p> |
| Components: | <p>The ORF clone is ion-exchange column purified and shipped in a 2D barcoded Matrix tube containing 10ug of transfection-ready, dried plasmid DNA (reconstitute with 100 ul of water).</p> |
| Reconstitution Method: | <ol style="list-style-type: none">1. Centrifuge at 5,000xg for 5min.2. Carefully open the tube and add 100ul of sterile water to dissolve the DNA.3. Close the tube and incubate for 10 minutes at room temperature.4. Briefly vortex the tube and then do a quick spin (less than 5000xg) to concentrate the liquid at the bottom.5. Store the suspended plasmid at -20°C. The DNA is stable for at least one year from date of shipping when stored at -20°C. |
| RefSeq: | <p>NM_007699.2, NP_031725.1</p> |
| RefSeq Size: | <p>2768 bp</p> |
| RefSeq ORF: | <p>1440 bp</p> |
| Locus ID: | <p>12672</p> |
| UniProt ID: | <p>P32211</p> |
| Cytogenetics: | <p>2 50.63 cM</p> |
| Gene Summary: | <p>The muscarinic acetylcholine receptor mediates various cellular responses, including inhibition of adenylate cyclase, breakdown of phosphoinositides and modulation of potassium channels through the action of G proteins. Primary transducing effect is inhibition of adenylate cyclase.[UniProtKB/Swiss-Prot Function]</p> |