

Product datasheet for **MG226525**

Bcl11b (NM_001079883) Mouse Tagged ORF Clone

Product data:

Product Type:	Expression Plasmids
Product Name:	Bcl11b (NM_001079883) Mouse Tagged ORF Clone
Tag:	TurboGFP
Symbol:	Bcl11b
Synonyms:	9130430L19Rik; AI604821; B630002E05Rik; BCL-11B; Ctip2; Rit1
Mammalian Cell Selection:	Neomycin
Vector:	pCMV6-AC-GFP (PS100010)
E. coli Selection:	Ampicillin (100 ug/mL)



[View online »](#)

ORF Nucleotide Sequence:

>MG226525 representing NM_001079883
 Red=Cloning site Blue=ORF Green=Tags(s)

TTTTGTAATACGACTCACTATAGGGCGGCCGGGAATTCGTCGACTGGATCCGGTACCGAGGAGATCTGCC
 GCC**CGCATCGCC**

ATGTCGCCGCCGAAACAGGGCAACCCGACACTTGTCCAGAGGGAACATCACGCCAGAGGCTGACC
 ATGTGGAGGCTACCATCCTCGAGGAAGACGAGGGTCTGGAGATAGAGGAGCCTAGCAGCCTGGGGCTGAT
 GGTGGGAGGCCCGACCTGATCTACTCACCTGTGGCCAGTGTCAGATGAACTTCCCGCTGGGGACATC
 CTGGTTTTATAGAGCACAAGAAGAAACAGTGTGGAGGCTGGGCCCTGCTACGACAAGGTCTGGACA
 AGAGCAGTCCACCTCCCTCCTCTCGCTCTGAGCTCAGGAGAGTATCTGAGCCAGTGGAGATCGGGATCCA
 GGTCAACCCTGATGAAGATGACCACCTACTGTACCCACGAAAGGCATCTGTCCAAGCAGGAGAACATT
 GCAGGGCCGTGCAGGCCGCCCAGCTGCCATCGATGGCCCCATAGCTGCCTCCTTCCACCCTCCCA
 CCTCCGTGATTACTTACCTCTGCGTGCCTGGCGTTCTCCACCCTGTTTCCCGCTGCCTTGCTGTGG
 TGCACGCCCATCTCGGGCAGCGGACTCAGGGTGAAGGTCAGATGGAGGCTCCCTTTGGATGCCAGTGT
 GAGTTGTGAGGTAAGATGAGCCTTCCAGCTACATTTGCACAACATGCAAGCAGCCCTTCAACAGCGCCT
 GGTTCCTGCTGCAGCACGACAGAACACACATGGCTTCCGAATCTACCTGGAGCCTGGGCCGGCCAGCAC
 CTCGCTCACGCCAGGCTCACCATCCCGCCACCCTCGGGCCGGAGACCGTGGCGCAGTCCCACTCATG
 AATTTCTGGGGACAGCAATCCTTTAACCTGCTGCGCATGACGGGCCCATCTGCGGGACCACCCTG
 GCTTCGGTGAAGGCCGCTTGCCAGGTACGCCACCCTCTTCCAGCCACCGCCACGCCATCACTTGGACCC
 ACACCCCTCAGTGCAGAGGAGATGGGGCTCGTGGCCAGCACCCAGTGCCTTCGACCGAGTATGCGC
 CTGAACCCATGGCCATAGACTCTCTGCCATGGACTTCTCCCGCGGCTGCGAGAATGCCCCGCAACA
 GCTCCACGCCCGCCCGTGTCCCAGGCCGTGGCAACCCATGACACCGGCTGCTGAACCTTTCCAGCC
 CAGTCCCAAGTCCCGTTCTCAGCAGCCACCCTGCCACCCATGCCTGCGGGCACACCCGCCACCGCAG
 CCGCCTGCCAAGAGCAAGTCTGTGAGTTCTGCGGCAAGACCTTCAAGTTCAGAGCAATCTCATCGTGC
 ACCGGCGCAGCCACAGGGCGAGAAGCCCTACAAGTGCAGCTGTGCGACCATGCGTGTGCGAGGCGAG
 CAAGCTCAAGCGCCACATGAAGACGCACATGCACAAGGCGGGCTCTTGCTGGCCGCTCAGACGACGGG
 CTCTCAGTGCAGCTCCCTGAGCCGGGACCAGCGAGCTGCCAGGTGACCTGAAAGCGGCCGATGGCG
 ACTTCCGCCACCATGAGAGCGACCCATCTTGGGCCCCGAGCCTGAGGACGACGAGGACGAGGAGGAGGA
 AGAAGAGGAGCTGCTGCTGGAGAACGAGAGCCGGCCTGAGTCGAGCTTACAGATGGACTCGGAGCTGGG
 CGTGGCCGCGAGAACGGAGGTGGCGTGCACCGGGGTGGCGGGCAGGGGCTGCAGCTGCGGCTCTGG
 CGGATGAGAAGGCTCTGGCCCTGGGCAAGGTGATGGAGGACGAGGGCTGGGCGCACTGCCGAGTATGG
 GGAGAAGCGGGGCGCCTTCTGAAGCGTGCAGGCGACACGGGTGATGCCGGAGCTGTTGGCTGTGGGGAC
 GCGGGTGCACCGGTGACGTGAACGGGCGCGGGGGCTTTCGCGCCAGGCGCAGAGCCCTTTCCAGCTC
 TCTTCCACGCAAGCCAGCACCGCTGCCAGCCCTGGGCTCGGTGGTCCCGCGCTGCACGCGGCCAAGCG
 CATCAAGGTGGAGAAAGACCTGGAGTGCACCTGCCGCCTCATCCCATCTGAGAACGTGTAICTCGCAG
 TGGCTCGTGGGCTACGCAGCATCGCGCCACTTTCATGAAGGACCCATTCTGGGCTTACGGATGCGCGCC
 AGTCGCCCTTTCGCCACATCGTCGGAACATTCCTCTGAGAACGGCAGCCTGCGCTTCTCAACGCCACCCGG
 GGACTGCTGGACGGCGGGCTGTCCGGGCGAGTGGCACGGCGAGCGGGGCGACACACCTCACCTGGGT
 GGTCCGGTCTTGGGAGGCCGAGCTCCAAGGAGGCGCCGCGCAGCGACACATGTGAGTACTGCGCAAGG
 TCTTCAAGAACTGTAGCAACCTGACGGTGCACCGGAGGACACACCGGGAGCGGCCTTACAAGTGCGA
 GCTGTGAACTACGCGTGCAGCAGAGCAAGCTCACGCGCCACATGAAGACGACGCGGAGATCGGC
 AAGGAGGTGTACCGCTGCGACATCTGCCAGATGCCCTTACAGCTTACAGCACCTGGAGAAACACATGA
 AAAAGTGGCACGGTGAACACTTGTGACTAATGATGTCAAATCGAGCAGGCTGAGAGGAGC

AGCGGACCGACGCGTACGCGGCCGCTCGAG - GFP Tag - GTTTAA

Protein Sequence: >MG226525 representing NM_001079883
 Red=Cloning site Green=Tags(s)

```
MSRRKQGNPQHLSQRELITPEADHVEATILEEDEGLEIEEPSSLGLMVGPPDPLLTCGQCQMNFLGDI
LVFIEHKKKQCGGLGPCYDKVLKSSPPSSRSELRRVSEPVEIGIQVTPDEDDHLLSPTKGIQPKQENI
AGPCRPAQLPSMAPIAASSSHPPTSIVITSPLRALGVLPPCFPLPCCGARPISGDGTQEGEQMEAPFGCQC
ELSGKDEPSSYICTTCKQPFNSAWFLLQHAQNTHGFRIYLEPGPASTSLTPRLTIPPLGPETVAQSPLM
NFLGDSNPFNLLRMTGPILRDHPGFEGRLPGTPPLFSPPPRHHLDPHRLSAEEMGLVAQHPSAFDRVMR
LNPMAIDSPAMDFSRRRLRELAGNSSTPPPVSPPGRGNPMHRLLNPFQSPKSPFLSTPPLPMPAGTPPPQ
PPAKSKSCEFCGKTFKFQSNLIVHRRSHTGEKPYKCQLCDHACSQASKLKRHMKTHMHKAGSLAGRSDDG
LSAASSPEPGTSELPGDLKAADGDFRHESDPSLGPEPEDEDEEEEEELLENESRPESFSMDSELG
RGRENGGGVPPGVAGAGAAAAALADEKALALGKVMEDAGLGALPQYGEKRGAFKLAGDTGDAGAVGCGD
AGAPGAVNGRGGAFAPGAEPFALFPRKPAPLPSPLGGPALHAAKRIKVEKDLELPPAALIPSENVYSQ
WLVGYAASRHFMKDPFLGFTDARQSPFATSSSEHSENGSLRFSTPPGDLLDGGLSGRSGTASGGSTPHLG
GPGGPRPSSKEGRRSDTCEYCGKVFKNCSNLTVHRRSHTGERPYKCELCNYACAQSSKLRHMKTHGQIG
KEYYRCDICQMPFSVYSTLEKHMKKWHGEHLLTNDVKIEQAERS
```

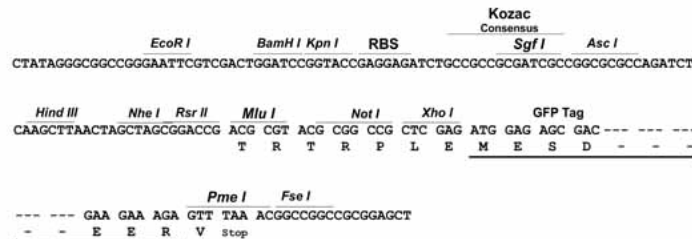
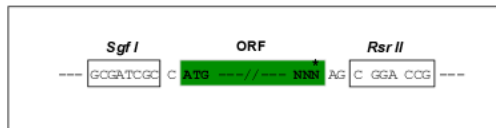
SGPTRRRLE - GFP Tag - V

Restriction Sites:

SgfI-RsrII

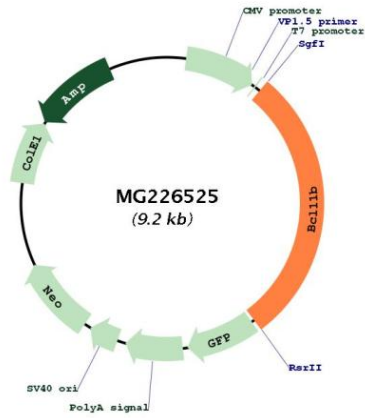
Cloning Scheme:

Cloning sites used for ORF Shuttling:



ACCN:	NM_001079883
ORF Size:	2652 bp
OTI Disclaimer:	The molecular sequence of this clone aligns with the gene accession number as a point of reference only. However, individual transcript sequences of the same gene can differ through naturally occurring variations (e.g. polymorphisms), each with its own valid existence. This clone is substantially in agreement with the reference, but a complete review of all prevailing variants is recommended prior to use. More info
OTI Annotation:	This clone was engineered to express the complete ORF with an expression tag. Expression varies depending on the nature of the gene.
Components:	The ORF clone is ion-exchange column purified and shipped in a 2D barcoded Matrix tube containing 10ug of transfection-ready, dried plasmid DNA (reconstitute with 100 ul of water).
Reconstitution Method:	<ol style="list-style-type: none">1. Centrifuge at 5,000xg for 5min.2. Carefully open the tube and add 100ul of sterile water to dissolve the DNA.3. Close the tube and incubate for 10 minutes at room temperature.4. Briefly vortex the tube and then do a quick spin (less than 5000xg) to concentrate the liquid at the bottom.5. Store the suspended plasmid at -20°C. The DNA is stable for at least one year from date of shipping when stored at -20°C.
RefSeq:	NM_001079883.1 , NP_001073352.1
RefSeq Size:	7923 bp
RefSeq ORF:	2655 bp
Locus ID:	58208
UniProt ID:	Q99PV8
Cytogenetics:	12 59.1 cM
Gene Summary:	Key regulator of both differentiation and survival of T-lymphocytes during thymocyte development in mammals (PubMed:12717433). Essential in controlling the responsiveness of hematopoietic stem cells to chemotactic signals by modulating the expression of receptors CCR7 and CCR9, which direct the movement of progenitor cells from the bone marrow to the thymus (By similarity). Is a regulator of IL2 promoter and enhances IL2 expression in activated CD4(+) T-lymphocytes (PubMed:16809611). Tumor-suppressor protein involved in T-cell lymphomas. May function on the P53-signaling pathway. Repress transcription through direct, TFCOUP2-independent binding to a GC-rich response element.[UniProtKB/Swiss-Prot Function]

Product images:



Circular map for MG226525