

Product datasheet for **MG226503**

Dhx9 (NM_007842) Mouse Tagged ORF Clone

Product data:

Product Type:	Expression Plasmids
Product Name:	Dhx9 (NM_007842) Mouse Tagged ORF Clone
Tag:	TurboGFP
Symbol:	Dhx9
Synonyms:	AI326842; Ddx9; HEL-5; mHEL-5; NDHII; RHA
Mammalian Cell Selection:	Neomycin
Vector:	pCMV6-AC-GFP (PS100010)
E. coli Selection:	Ampicillin (100 ug/mL)
ORF Nucleotide Sequence:	>MG226503 representing NM_007842 Red=Cloning site Blue=ORF Green=Tags(s)

TTTTGTAATACGACTCACTATAGGGCGGCCGGAATTCGTCGACTGGATCCGGTACCGAGGAGATCTGCC
GCC**CGATCGCC**

ATGGGTGACATTA AAAATTTTCTGTATGCCTGGTGTGGCAAAGGAAGATGACTCCAGCCTATGAAATTA
GAGCAGTAGGAAACAAAAACAGACAGAAATTCATGTGTGAGGTTTCGAGTAGAAGGTTTAATTATGCTGG
TATGGGCAATCCACCAATAAAAAGGATGCACAGAGCAATGCTGCCAGAGACTTTGTTAACTATTTGGTT
CGAATAAATGAAGTAAAGAGTGAAGAAGTTCAGCTGTTGGGATTGTACCACCCCACTACTTACGCG
ACACCTCTGATAGCACAGCAAGTCTGCAGAAGGTTACCAGCACCAATGGGAGGACCCTTCTCTCTCA
TCTGGCTCTCAAAGCAGAAGAAAATAATTCTGGAGTTGAGTCTTCTGGCTATGGCTCTCCTGGACCTACT
TGGGACCGAGGAGCCAACCTTAAAGATTACTACTCAAGAAAGGAAGAACAAGAAGTACAAGCGACTCTAG
AGTCAGAAGAAGTGGATTTAAATGCTGGGCTTCATGGAAATGGACACTGGAAAATGCTAAGGCTCGTCT
GAACCAAGTATTTCCAAAAAGAAAAGATCCAAGGAGAATAAAGTACACCCAAGTGGGTCGCCGACCACAAC
AGGAGCTTTATTGCAGAAATGACCATTTATCAAGCAGCTTGGCAGAAGGATTTTCGCACGTGAACATG
GATCTAATAAGAAATTAGCAGCAGTCATGTGCCCTCTCACTTGTCCGACAGCTCTATCATCTTGGAGT
GATTGAGGCTTACTCTGGGCTTACAAAGAAGAAAGAAGGAGAGAGAGTGGAGCCTTACAAAGTTTTCTT
TCTCCAGATTTGGAGCTTCAGCTGCAAAATGTGGTTCAAGAGCTAGATCTTGAATTTGTGCCCCACCTG
TTGATCCTTCTATGCCAGTTATACTTAAACATTGGGAAATTTGGCTCATTGTAACCATCTCAGAGACAAAA
TGCAAGTGGGAGTGGTTTCTTGGTCACTCCACAATCCAAGTGAATCCTTGGACAAGTAGCAACATTGAT
GAGGGACCCCTTGCTTATGCTTCTACAGAACAAATAAGCATGGACCTTAAAGATGAATTAACATACCAGA
TGGAAACAAGATCATAATTTACAAAGTGTGTACAAGAGAGAGAGTGTGCTGCTGTGAAGAAATTTGAAGC
TGAAATTTCTGGAAGCCATTAGTTCAAATTCAGTTGTGATTATCCGAGGGGCTACTGGTTGTGGTAAAACC
ACACAAGTTCCACAGTACATTTTGGATGACTTTATCCAGAATGACAGAGCAGCCGAATGCAATATTGTTG
TGACACAGCCCAGAAGGATCAGTGCAGTGCAGTGGCAGAGCGAGTTGCTTATGAGAGAGGAGAAGAGCC
TGAAAAAGCTGTGGTTACAGTGTTCGATTTGAGTCTATACTTCCACGCCCTCATGCCAGTATAATGTTT



[View online »](#)

TG TACTGTAGGTGTGCTTCTAAGAAAAGCTAGAAGCCGGCATTTCGAGGAATCAGTCATGTTATTGTGGATG
AAATTCATGAAAGAGATATTAATACTGACTTCCTTTTGGTAGTACTGCGTGATGTGGTTTTGGCTTATCC
TGAAGTCCGATTGTCTTATGTCTGCAACTATTGATACCACCATGTTCTGTGAATATTTCTTCAATTGC
CCCATCATTGAGGTTTATGGAAGGACTTTCCAGTTCAAGAGTATTTTCTGGAAGACTGCATTGAGATGA
CTCAATTCATTCTCTCCAAAGGACAAGAAAAAGAAGGATAAGGAGGATGATGGTGGTGAAGATGATGA
TGCAAATTGCAACCTAATATGTGGTGACGAATATGGGCCAGAAAACAAAGTTGAGCATGCTCAGTTGAAT
GAAAAGGAAACTCCTTTTGAACCTATTGAGGCGCTTCTTAAATACATTGAAACCCCTTAATGTTCCCTGGAG
CTGTGTTGGTATTTTACCTGGCTGGAACCTTGATTTTACTATGCAAAAAGCATTAGAAAATAATTCGCA
TTTCGGAAGTCACCGGTATCAGATTCTACCTCTCCATTCTCAGATTCTCGTGAGGAACAGCGCAAAGTG
TTTGATCCAGTACCAGATGGAGTAACCAAGGTTATTTTGTCCACAAACATTGCTGAAACAAGCATTACCA
TAAATGATGTTGTTTACGTCATTGACTCTGCAAAACAAAAGTAAAACCTTTACTGCTCACAACAATAT
GACCAACTATGCTACTGTATGGGCATCAAAAACAAACCTTGAGCAGAGGAAAGGGCGAGCTGGCCGTGTA
CGACCTGGGTTCTGTTTCCACCTTTGTAGTCGAGCTCGTTTTGACAGACTAGAGACCCACATGACACCAG
AGATGTTTAGAACCATTGCATGAAATGCTCTGAGCATAAACTTCTGCGTCTAGGAGGAATTGGCCA
ATTCCTTGCAAAGGCAATCGAACCTCCACCTTTGGATGCTGTAATTGAAGCAGAGCATACTAAGAGAA
CTTGATGCTTTAGATGCCAATGATGAGTTGACTCCTCTTGACGAATCCTGGCTAAACTCCCCATTGAAC
CTCGTTTTGAAAAATGATGATAATGGGGTGTATTTTCTATGTGGGAGATGCTGTCTGTACCATCTCTGC
TGCTACCTGCTTCCAGAACCTTTATCAGCGAAGGAAAACGCCTGGGATACATACACCGGAATTTTGTCT
GGAAACAGATTTTCTGATCACGTGGCTCTTTTATCAGTATTCCAAGCCTGGGATGATGCTAGGATGAGTG
GAGAAGAAGCAGAAAACGTTTTTGTGAGCAGAAGAGACTCAATATGGCTACACTGAGAATGACTTGGGA
GGCCAAAGTACAGCTTAAAGAGATTCTGATTAACCTCTGGATTTCCCGAAGATTGTTTATTGACACAAGTG
TTTACTAACACTGGACCAGATAATAATTTGGATGTTGTTATCTCTCTGCTGGCTTTTGGTGTGTACCCCA
ATGTATGCTATCATAAGGAGAAGAGAAAAGATTCTTACCCTGAAGGGCGCAATGCATTTATCCACAAGTC
ATCTGTGAACTGTCTTTTCCAGCAGCCAAGACATGAAGTACCCATCTCTTTCTTTTGGTGAAAAG
ATTAGAACCCGAGCCATCTCTGCTAAAGGCATGACCTTAGTGACCCCTTACAGCTACTTCTCTTTGCT
CCAAGAAAGTCCAGTCGGATGGGCAGATTGTGTTTATAGATGACTGGATCAGACTGCAAATATCTCATGA
AGCTGCAGCATGCATCACAGCCCTCCGGGCAGCCATGGAAGCTCTGGTTGTTGAAGTGCCAAAACA
AATATTATCAGCCAATTGGACCCTGTAATGAACATATGCTAAACACAATCCGACAGATTCTAGGCCCT
CAGCTGCTGGTATCAACCTTATGATTGGAAGTGAAGGTACGGCGATGGTCCACGACCTCCCAAGATGGC
CCGATATGATAATGGAAGTGGATATAGAAGGGGATATGGTGGGGGAGGATATGGTGGCGGAGGATATGGT
GGCGGATACGGTGTGGAGGCTTTGGAGGAGGCTTTGGAAGTGGGGGAGGCTTTGGAGGAGGCTTTAACA
GCGGTGGGGGAGGCTTTGGTGTGGTGGGGGAGGCTTTGGCAGTGGTGGAGGTGGATTTGGTGGTGGTGG
AGGAGGCTTACGTGGTGGAGGAGGTGGTGGATTTGGTGGTGGCAGAGGAGGTGGAGGTGGCGGATTTGGG
GGTAGTGGGGGCTTTGGAAGTGGTGGGGGAGGGTATGGTGTGGAGGTGGTGGCTATGGAGGAGGTGGT
GTGGTGGCTATGGAGGAGGCACTGGAGGATATGGAGGTGGGGGAGGGGTTATGGTGGTGGGGAAGGTTA
TAGTATAAGCCCCAACTTACCCTGGGAATTATGGTGGTGGCGGGGAGGGTATAGAGGAGGTTCCCAA
GGAGGCTACAGAAAACCTTTGGTGGAGACTACAGAGGGTCCAGTGGAGACTACCGGGGATCCGGTGGG
GCTATAGAGGATCTGGAGGATCCAGCGAAGGGGTTATGGAGGTGTTATTTTGGACAAGGAAGAGGAGG
AGGGGGTGGTGGTGGCTAT

ACGCGTACGCGGCCGCTCGAG – GFP Tag – GTTTAA

Protein Sequence: >MG226503 representing NM_007842
 Red=Cloning site Green=Tags(s)

```

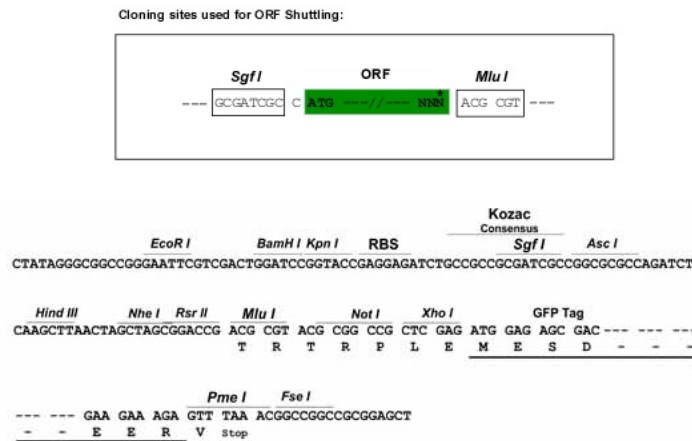
MGDIKNFLYAWCGKRKMTPAYEIRAVGNKNRQKFMCEVVRVEGFNYAGMGNSTNKKDAQSNAARDFVNYLV
RINEVKSEEVPVAVGI VPPPPILSDTSDSTASAAEGLPAPMGGPLPPLALKAENNNGVSSGYGSPGPT
WDRGANLKDYYSRKEEQEVQATLESEEVDLNAGLHGNWTL ENAKARLNQYFQKEKIQGEYKYTVGPDHN
RSFIAEMTIYIKQLGRRIFAREHGSNKKLAAQSCALSLVRQLYHLGVIEAYSGLTKKKEGERVEPYKVFL
SPDLELQLQNVVQELDLEIVPPPVDPSMPVILNIGKLAHFPSQRQNAVGVVPWSPQSNWNPWTSNID
EGPLAYASTEQISMDLKNELTYQMEQDHNLSVQLQERELLPVKFFAEILEAISSNSVVIIRGATGCGKT
TQVPQYILDDFIQNDRAAECNIVVTQPRRISAVAVAERVAERGERGEEPGKSCGYSVRFESILPRPHASIMF
CTVGVLLRKLEAGIRGISHVIVDEIHERDINTDFLLVLRDVLVLAYPEVRIVLSATIDTTMFCEYFFNC
PIIEVYGRTPVQYEFLEDCIQMTQFIPPPKDKKKDKEDDGGEDDDANCNLICGDEYGPETKLSMSQLN
EKETPFELIEALLKYIETLNVPGAVLVFLPGWNLITYTMQKHLNNSHFGSHRYQILPLHSQIPREEQRKV
FDPVPDGVTKVILSTNIAETSITINDVVYVIDSCKQKVKLFTAHNMTNYATVWASKTNLEQRKGRAGR
RPGFCFHLCSRARFDRLETHMTPMFRTPLHEIALSIKLLRGGIGQFLAKAIEPPPLDAVIEAEHTLRE
LDALDANDELTPLGRI LAKLPIEPRFGKMMIMGCIFYVGDVCTISAATCFPEPFI SEGKRLGYIHRNFA
GNRFS DHVALLSVFQAWDDARMSGEEAEIRFCEQKRLNMATLRMTWEAKVQLKEILINSGFPEDCLLTQV
FTNTGPDNNDLVISLLAFGVYPNVCYHKEKRKILTTEGRNALIHKSSVNCPFSSQDMKYSPFFVFG EK
IRTRIASAKGMTLVTP LQLLLFASKKVQSDGQIVFIDDWIRLQISHEAAACITALRAAMEALVVEVSKQP
NIISQLDPVNEHMLNIRQISRPSAAGINLMIGSVRYGDGPRPPKMARYDNGSGYRRGGYGGGGYGGGGY
GGYSGGGFGGGFSGGGFSGGGFSGGGFSGGGFSGGGFSGGGFSGGGFSGGGFSGGGFSGGGFSGGGF
GGYSGGGFGGGFSGGGFSGGGFSGGGFSGGGFSGGGFSGGGFSGGGFSGGGFSGGGFSGGGFSGGGF
GGYRNNFGGDYRGS SGDYRGS SGGYRGS SGGFQRRGYGGYFGQGRGGGGGGY
  
```

TRTRPLE - GFP Tag - V

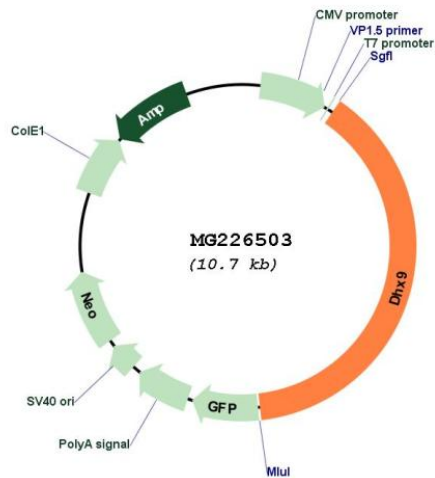
Restriction Sites:

Sgfl-MluI

Cloning Scheme:



Plasmid Map:



ACCN: NM_007842

ORF Size: 4149 bp

OTI Disclaimer: Due to the inherent nature of this plasmid, standard methods to replicate additional amounts of DNA in *E. coli* are highly likely to result in mutations and/or rearrangements. Therefore, OriGene does not guarantee the capability to replicate this plasmid DNA. Additional amounts of DNA can be purchased from OriGene with batch-specific, full-sequence verification at a reduced cost. Please contact our customer care team at custsupport@origene.com or by calling 301.340.3188 option 3 for pricing and delivery.

The molecular sequence of this clone aligns with the gene accession number as a point of reference only. However, individual transcript sequences of the same gene can differ through naturally occurring variations (e.g. polymorphisms), each with its own valid existence. This clone is substantially in agreement with the reference, but a complete review of all prevailing variants is recommended prior to use. [More info](#)

OTI Annotation: This clone was engineered to express the complete ORF with an expression tag. Expression varies depending on the nature of the gene.

Components: The ORF clone is ion-exchange column purified and shipped in a 2D barcoded Matrix tube containing 10ug of transfection-ready, dried plasmid DNA (reconstitute with 100 ul of water).

Reconstitution Method:

1. Centrifuge at 5,000xg for 5min.
2. Carefully open the tube and add 100ul of sterile water to dissolve the DNA.
3. Close the tube and incubate for 10 minutes at room temperature.
4. Briefly vortex the tube and then do a quick spin (less than 5000xg) to concentrate the liquid at the bottom.
5. Store the suspended plasmid at -20°C. The DNA is stable for at least one year from date of shipping when stored at -20°C.

RefSeq: [NM_007842.2](#), [NP_031868.2](#)
RefSeq Size: 4623 bp
RefSeq ORF: 4152 bp
Locus ID: 13211
UniProt ID: [O70133](#)
Cytogenetics: 1 65.37 cM

Gene Summary:

Multifunctional ATP-dependent nucleic acid helicase that unwinds DNA and RNA in a 3' to 5' direction and that plays important roles in many processes, such as DNA replication, transcriptional activation, post-transcriptional RNA regulation, mRNA translation and RNA-mediated gene silencing. Requires a 3'-single-stranded tail as entry site for acid nuclei unwinding activities as well as the binding and hydrolyzing of any of the four ribo- or deoxyribo-nucleotide triphosphates (NTPs). Unwinds numerous nucleic acid substrates such as double-stranded (ds) DNA and RNA, DNA:RNA hybrids, DNA and RNA forks composed of either partially complementary DNA duplexes or DNA:RNA hybrids, respectively, and also DNA and RNA displacement loops (D- and R-loops), triplex-helical DNA (H-DNA) structure and DNA- and RNA-based G-quadruplexes. Binds dsDNA, single-stranded DNA (ssDNA), dsRNA, ssRNA and poly(A)-containing RNA. Binds also to circular dsDNA or dsRNA of either linear and/or circular forms and stimulates the relaxation of supercoiled DNAs catalyzed by topoisomerase TOP2A. Plays a role in DNA replication at origins of replication and cell cycle progression. Plays a role as a transcriptional coactivator acting as a bridging factor between polymerase II holoenzyme and transcription factors or cofactors, such as BRCA1, CREBBP, RELA and SMN1. Binds to the CDKN2A promoter. Plays several roles in post-transcriptional regulation of gene expression. In cooperation with NUP98, promotes pre-mRNA alternative splicing activities of a subset of genes (By similarity). As component of a large PER complex, is involved in the negative regulation of 3' transcriptional termination of circadian target genes such as PER1 and NR1D1 and the control of the circadian rhythms (PubMed:22767893). Acts also as a nuclear resolvase that is able to bind and neutralize harmful massive secondary double-stranded RNA structures formed by inverted-repeat Alu retrotransposon elements that are inserted and transcribed as parts of genes during the process of gene transposition (PubMed:28355180). Involved in the positive regulation of nuclear export of constitutive transport element (CTE)-containing unspliced mRNA. Component of the coding region determinant (CRD)-mediated complex that promotes cytoplasmic MYC mRNA stability. Plays a role in mRNA translation. Positively regulates translation of selected mRNAs through its binding to post-transcriptional control element (PCE) in the 5'-untranslated region (UTR). Involved with LARP6 in the translation stimulation of type I collagen mRNAs for CO1A1 and CO1A2 through binding of a specific stem-loop structure in their 5'-UTRs. Stimulates LIN28A-dependent mRNA translation probably by facilitating ribonucleoprotein remodeling during the process of translation. Plays also a role as a small interfering (siRNA)-loading factor involved in the RNA-induced silencing complex (RISC) loading complex (RLC) assembly, and hence functions in the RISC-mediated gene silencing process. Binds preferentially to short double-stranded RNA, such as those produced during rotavirus intestinal infection (PubMed:28636595). This interaction may mediate NLRP9 inflammasome activation and trigger inflammatory response, including IL18 release and pyroptosis (PubMed:28636595). Finally, mediates the attachment of heterogeneous nuclear ribonucleoproteins (hnRNPs) to actin filaments in the nucleus (By similarity).[UniProtKB/Swiss-Prot Function]