

## Product datasheet for **MG226502**

### Blm (NM\_007550) Mouse Tagged ORF Clone

#### Product data:

Product Type:	Expression Plasmids
Product Name:	Blm (NM_007550) Mouse Tagged ORF Clone
Tag:	TurboGFP
Symbol:	Blm
Mammalian Cell Selection:	Neomycin
Vector:	pCMV6-AC-GFP (PS100010)
E. coli Selection:	Ampicillin (100 ug/mL)
ORF Nucleotide Sequence:	>MG226502 representing NM_007550 Red=Cloning site Blue=ORF Green=Tags(s)

TTTTGTAATACGACTCACTATAGGGCGGCCGGGAATTCGTCGACTGGATCCGGTACCGAGGAGATCTGCC  
GCC**CGATCGCC**

ATGAGGATCATGGCTGCTGTTCTCTGAACAATCTACAAGAACAACACTACAGCGACTCAGCCAGAAAAAC  
TTAATAATCAACCCAGCCTTTCAAACCAAAATCTTTAGGTTTTACTTTTAAAAAGAAAACATCAGAGGG  
TGATGTGTCTGCTACTAGTGTGTCCGTAGTAAAAACACCTGCGTTAAGTGATAAAGATGTGAACGTGTCT  
GAGGCCTTTTCTTCACTGAGTCTCCACTCCACAAACCAAGCAGCAGGCAAAGATTGAAGGCTTTCTTA  
AACATTTCCCTGGAAGGCAGCAAAGCAAGGGGACCTGCTCTGAGCCGCTACTGCCGGCCACGGTACAGAC  
TGCTCAGGACACTTTGTGCACTACCCCCAAAACCCCACTGCGAAGAACTGCCCGTGGCTGTTTTCAAG  
AAATTAGAATTTAGTTCTTCTGCAGACTCCCTCAGTGACTGGGCTGATATGGATGACTTTGATATGTCAG  
CATCAGATGCGTTTGCTTCACTGGCTAAAAATCCTGCCACAAGAGTAAGCACCGCTCAGAAAAATGAAAA  
GACTAAGAGAACTTCTTTAAACCACCACCTCGTAAAGCCAATGCAGTAAAGACTGACTTACTCTCC  
TCCCCGAATGCCTGCAAGTGGATTTAACGAAGGAATCGGAGGAGGAGGAGGAGGAGGAGGAGGAGGCGG  
AGGGGGCGGACTGCCTGAGCAGGATGTGATCTGCATTGACAATGATTCTGCTTCTGAAGAGCTCACGGA  
GAAAGACACGCAGGAAAGCCAGTCTTTGAAAGCTCACTTGGGAGCTGAAAGAGGTGACAGTAAAAGAAG  
AGCCATGAAGACGAAGCTGTGTTCCATTAGTTCAGAACACTGAATACTTTGAACACAATGACAATGATT  
ATGATATAGATTTGTTCCACCTTCTCCAGAAGAAATCATCTCCACTGCTTCTTCCCTCGTTGAAATGTT  
CAGTATGTTAAAGGATCTTGATGACTCTGACAAAAGAAAAGGGCATTCTTAGCACCTCAGAAGAGCTTCTG  
TCAAACCCAGAGGAAATGACCACACACAAGTCTGATGCAGGAACCAAGTAAAGACTGTGATGCCAGCAGAG  
TACGCATACAGCAGCAGCTTATTCATGTGATGGAGCACATCTGTAAGTTAGTTGATACTGTTCTACTGA  
TGAAGTGAAGCTTTGAATGTGGGACCGAATTGCTTCAACAACGAAACATAAGGAGGAAGCTCCTAGCT  
GAAGCAGGTTTTAATGGAATGACGTGACACTTCTGGGTTCTCTGTGGAGGCACAGGCCTGATCACTTG  
ATAACACAGTGCAGGGCGACTCCTGCCCTGTGGGCATCTTAATAAGAGTTAAATCTCCATACCTTCT  
CTCACATTTCCCTTCCACTGAGGAATGTTTACCACCACTCCAGGAAAGACAGGATTTCCAGCCACC  
CCGAAGAATCTTTTGAAGCCGTTATTGAATCCCATTTACAGAAGTCTTTGTAAGTAGCAACTGGG  
CTGAAACACCAAGGATGGAAAACAGGAACGAAAGCACTGACTTCCAGGGAGTGTCTCACCAGCACCCAC



View online »

TGTGAAAGCTCAGAGTAAACAAGCTGCTTCAGGATGGAACGTAGAGAGACACGGCCAGGCTTCTATGAT  
 ATCGATAACTTTAATATTGATGACTTTGATGATGATGATGATGATGACTGGGAAAACATAATGCACA  
 ATTTTCCAGCCAGCAAATCTTCCACAGCCACCTACCCACCCATCAAGGAAGTGGGCCAGTTAAATCTCT  
 CTCAGAAAGGATTTCTTCCAGCCAAGGCAAAGTTTCTTCCAGTGGTATCAACCGCTCAAAATACAAACCTC  
 TCAGAGTCAATTCAGAATTGCTCTGATAAGCTGGCCAAAATTTATCATCAAAAAATCCAAAACATGAAC  
 AATTTTCAAAGTCTTAATTTTCTCATACAAAAGAAATGATGAAGATTTTCCATAAGAAATTTGGCTTGCA  
 TAATTTAGAACTAATCAGCTAGAGGCGATCAATGCTGCGCTGCTTGGTGAAGACTGCTTTATCCCTAATG  
 CCCACTGGAGGAGTAAAAGTTTGTGCTACCAGCTCCCTGCCTGTGTTTCTCCTGGGGTCACAATTGTCA  
 TTTCTCCCTTGAGATCACTAATAGTAGATCAAGTCCAAAAGCTGACTTCTTTGATATTCCAGCTACATA  
 TCTGACAGGGGATAAGACTGACTCAGAAGCTGCAAATATTTACCTCCAATTATCCAAAAAGACCCAATC  
 ATCAAGCTTTTGTATGTTACTCCAGAGAAGGTCTGTGCAAGTAACAGGCTGATTTCTACTCTGGAGAATC  
 TGTATGAGCGGAAGCTTTGGCACGTTTTGTGCTTGTGATGAAGCGCATTGTGTGAGTCAGTGGGGTCATGA  
 TTTTCGTCAAGATTACAAAAGGATGAATATGCTTCGCCAGAAGTTTCTTCTGTTCCAGTATGGCCCTC  
 ACGGCCACAGCGAACCCAGGGTCCAGAAGGACATCCTCACTCAGCTGAAGATCCTCAGACCTCAGGTGT  
 TTAGCATGAGCTTAAACAGACACAATCTGAAGTACTATGTATTACCAAGAAGCCCAAAAAAGTAGCATT  
 TGATTGCCTAGAGTGGATCAGAAAGCATCACCTTATGACTCGGGGATAATTTACTGCCTCTCCAGGAGG  
 GAATGTGACACAATGGCTGACACTTTACAGAGAGAAGGCCTGGCTGCCCTGGCTTACCATGCGGGCCTCA  
 GTGACTCTGCCAGAGATGAGGTGACGACAAGTGGATCAACCAGGACAATGCCAGGTTATCTGTGCGAC  
 AATTGCGTTTGGAAATGGGAATTGACAAACCTGACGTGCGATTTGTGATTCATGCATCTTCTCCTAAATCT  
 ATGGAGGGTTATATCAAGAATCCGGCCGAGCTGGAAGAGATGGGAAATATCTCACTGCGTGCTTTTCT  
 ATACATATCATGATGTGACCAGACTGAAGAGACTTATAATGATGGAAAAAGATGGAACTATCATAACGAA  
 GGAAACTCAGTCAATAATCTATATAGCATGGTACATTACTGTGAAAACATAACGGAATGCAGAAGAATA  
 CAGCTTTTAGCTTACTTTGGTGAAAAAGGATTCAACCTGATTTTTGTAAGAAATACCCAGATGTTTCTT  
 GTGACAATTGCTGTAAAACAAAGGATTATAAAAACAAAAGATGTGACTGATGACGTGAAAAATATTATAAG  
 ATTTGTTCAAGAACACAGTTCATCACCAGGAACAAGAAATATAGGACCTGCTGGAAGATTTACTCTGAAC  
 ATGCTGGTCGACATTTTCTTGGGGAGCAAGAGTGCAAAAAGTAAAGTCTGGAATATTTGGAAGGGGACTA  
 CATATTCACGACATAATGCCGAAAGACTTTTTAAAAAGCTGATTCTAGACAAAATCCTGGATGAAGACTT  
 ATATATCAATGCCAATGACCAACCAATTGCCTATGTGATGCTAGGAACAAAAGCCACAGTGTGCTGAGT  
 GGCCACTTGAAGGTGACTTCATGGAAACGAAAATCCAGCAGTATAAAAACAAAAGCTTTAGTGG  
 CCAAAGTATCCCAGAGAGAAGAGGTAGTTAAGAAATGTCTTGGAGAACTACAGAGGTCTGCAAATTGCT  
 GGGGAAAGTCTTTGGTGTCCATTACTTCAATATTTTTAATACAGCCACACTCAAAAAGCTTGCAGAACT  
 TTATCTTCTGATCCTGAGGTTTTGCTTCCAGATTGATGGTGTACCGAAGCAAGCTGGAAAAATATGGTG  
 CAGAAGTGATTCCAGTATTACAGAAGTACTCAGAATGGACAGTGCAGCTGAGGATGGTTCCCCAGGCGC  
 CAGAGGGCCCCAGAGGACACTGAGGAGGAGGAGGAGGAAGCGCCTGTATCTTCTCACTACTTTGCAAAAT  
 CAAACTAGAAATGAAAGAAAGAGAAAGAAAATGTCAGCCACCCATAAGCCCAAGAGGAGAAGAACTAGTT  
 ACGGTGGCTTCCAGAGCAAAGGGGGCTCTACTACATGCAGAAAAACGACTTCTAAAAGTAAATCTATGG  
 TGTAACGGATCCCGCTCGGCCTCATGTGCTTCTCAGGCAACATCATCAGCCAGTAGAAAACTGGGGATT  
 ATGGCTCTCAAAGCCTGTAATAGAACGTTCTCAGGCCTTCATATGCCTTCTCC

ACGCGTACGCGGCCGCTCGAG – GFP Tag – GTTTAA

**Protein Sequence:** >MG226502 representing NM\_007550  
 Red=Cloning site Green=Tags(s)

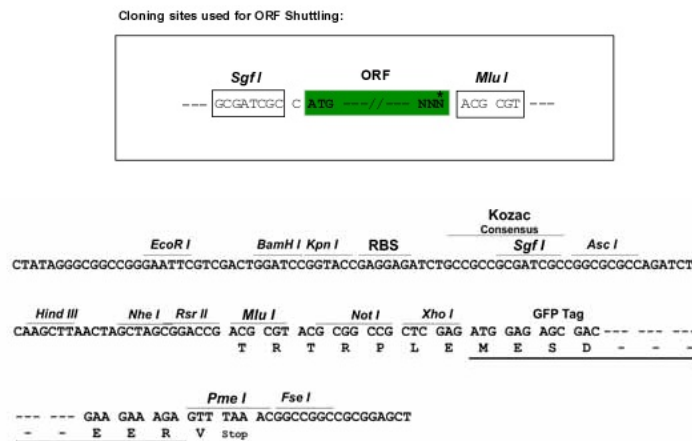
```

MRIMAAVPLNNLQEQLRHSARKLNNQPSLSKPKSLGFTFKKKTSEGDVSVTSVSVVVKTPALSDKDVNVS
EAFSFTESPLHKPKQQAIEGFKHFPGRQQSKGTCSEPSLPATVQTAQDTLCTTPKTPTAKKLPVAVFK
KLEFSSSADSLSDWADMDDFDMSASDAFASLAKNPATRVSTAQMKKTKRNFKPPPRKANAVKTDLTPP
SPECLQVDLTKESEEEEEEEEAEAGADCLSRDVICIDNDSASEELTEKDTQESQSLKAHLGAERGDSEKK
SHDEAVFHSVQNTYFEHNDNDYDIDFVPPSPEEIISTASSSLKCSSMLKDLDDSDKEKGLSTSEELL
SKPEEMTHKSDAGTSKDCDAQQIRIQQQLIHVMEHICKLVDTVPTDELEALNCGTELLQQRNIRKLLA
EAGFNGNDVRLGSLWRHRPDSL DNTVQGDSCPVGHPNKLNSPYLLSHSPSTEECLPTTTPGKTF SAT
PKNFLFERLLNSHLQKSFVSSNWAETPRMENRNESTDFPGSVLSTTTVKAQSKQAASGWNVERHQQASYD
IDNFNIDDFDDDDDDDDWENIMHNFPAKSSSTATYPPIKEGGPVKSLSERISSAKAKFLPVVSTAQNTNL
SESIQNCSDKLAQNLSSKNPKHEHFQSLNFPHTKEMMKIFHKKFGLHNFRTNQLEAINAALLGEDCFILM
PTGGGKSLCYQLPACVSPGVTIVISPLRSLIVDQVQKLSFDIPATYLTGDKTDSEANIYQLSKKDPI
IKLLYVTPEKVCASNRLISTLENLYERKLLARFVIDEAHCVSQWGHDFRQDYKRMNMLRQKFPSPVMAL
TATANPRVQKDILTQLKILRPQVFSMSFNHRHLKYYVLPKPKPKVAFDCLIEWIRKHHHPYDSGIIYCLSR
ECDTMADTLQREGLAALAYHAGLSDSARDEVQHKWINQDNCQVICATIAFGMGIDKPDVRFVIAHSLPKS
MEGYYQESGRAGR DGEISHCVLFYTYHDVTRLKRLIMMEKDGNYHTKETHVNNLYSMVHYCENITECRR
QLLAYFGEKGFNPDFCKKYPDVSCDNCKTKDYKTKDVTDDVKNIRFVQEHSSSPGTRNIGPAGRFTLN
MLVDIFLGSKSAVKVSGIFGKGTYSRHAERLFKLLILDKILDEDLINANDQPIAYVMLGKAHVSLS
GHLKVDVFMETENSSSIKKQKALVAKVSQREEVVKCLGELTEVCKLLGKVFVGHYFNIFNTATLKKLAES
LSSDPEVLLQIDGVTEDKLEKYGAEVIPVLQKYSEWTPAEDGSPGARGAPEDTEEEEEAPVSSHYFAN
QTRNERKRKMSATHKPKRRRTSYGGFRAKGGSTTCRKTTSKSKFYGVTSRSASCASQATSSASRKLGI
MAPPKPVNRTFLRPSYAFS
  
```

TRTRPLE - GFP Tag - V

**Restriction Sites:** Sgfl-MluI

**Cloning Scheme:**

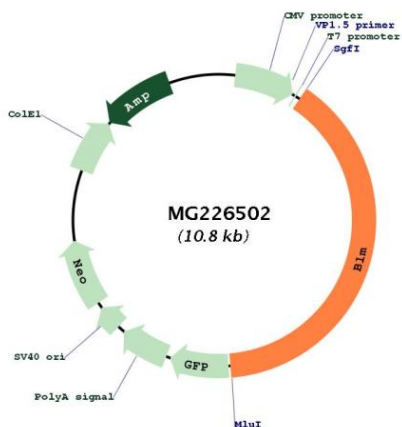


**ACCN:** NM\_007550

**ORF Size:** 4257 bp

<b>OTI Disclaimer:</b>	<p>Due to the inherent nature of this plasmid, standard methods to replicate additional amounts of DNA in E. coli are highly likely to result in mutations and/or rearrangements. Therefore, OriGene does not guarantee the capability to replicate this plasmid DNA. Additional amounts of DNA can be purchased from OriGene with batch-specific, full-sequence verification at a reduced cost. Please contact our customer care team at <a href="mailto:custsupport@origene.com">custsupport@origene.com</a> or by calling 301.340.3188 option 3 for pricing and delivery.</p> <p>The molecular sequence of this clone aligns with the gene accession number as a point of reference only. However, individual transcript sequences of the same gene can differ through naturally occurring variations (e.g. polymorphisms), each with its own valid existence. This clone is substantially in agreement with the reference, but a complete review of all prevailing variants is recommended prior to use. <a href="#">More info</a></p>
<b>OTI Annotation:</b>	<p>This clone was engineered to express the complete ORF with an expression tag. Expression varies depending on the nature of the gene.</p>
<b>Components:</b>	<p>The ORF clone is ion-exchange column purified and shipped in a 2D barcoded Matrix tube containing 10ug of transfection-ready, dried plasmid DNA (reconstitute with 100 ul of water).</p>
<b>Reconstitution Method:</b>	<ol style="list-style-type: none"> <li>1. Centrifuge at 5,000xg for 5min.</li> <li>2. Carefully open the tube and add 100ul of sterile water to dissolve the DNA.</li> <li>3. Close the tube and incubate for 10 minutes at room temperature.</li> <li>4. Briefly vortex the tube and then do a quick spin (less than 5000xg) to concentrate the liquid at the bottom.</li> <li>5. Store the suspended plasmid at -20°C. The DNA is stable for at least one year from date of shipping when stored at -20°C.</li> </ol>
<b>RefSeq:</b>	<p><a href="#">NM_007550.4</a>, <a href="#">NP_031576.4</a></p>
<b>RefSeq Size:</b>	<p>4869 bp</p>
<b>RefSeq ORF:</b>	<p>4260 bp</p>
<b>Locus ID:</b>	<p>12144</p>
<b>UniProt ID:</b>	<p><a href="#">O88700</a></p>
<b>Cytogenetics:</b>	<p>7 45.65 cM</p>
<b>Gene Summary:</b>	<p>ATP-dependent DNA helicase that unwinds single- and double-stranded DNA in a 3'-5' direction (PubMed:9840919). Participates in DNA replication and repair (By similarity). Involved in 5'-end resection of DNA during double-strand break (DSB) repair: unwinds DNA and recruits DNA2 which mediates the cleavage of 5'-ssDNA (PubMed:9840919). Negatively regulates sister chromatid exchange (SCE) (PubMed:9840919, PubMed:27010503). Stimulates DNA 4-way junction branch migration and DNA Holliday junction dissolution. Binds single-stranded DNA (ssDNA), forked duplex DNA and DNA Holliday junction (By similarity). [UniProtKB/Swiss-Prot Function]</p>

Product images:



Circular map for MG226502