

Product datasheet for **MG226497**

Ddx17 (NM_199080) Mouse Tagged ORF Clone

Product data:

Product Type:	Expression Plasmids
Product Name:	Ddx17 (NM_199080) Mouse Tagged ORF Clone
Tag:	TurboGFP
Symbol:	Ddx17
Synonyms:	2610007K22Rik; A430025E01Rik; AI047725; C80929; Gm926; p7; p72
Mammalian Cell Selection:	Neomycin
Vector:	pCMV6-AC-GFP (PS100010)
E. coli Selection:	Ampicillin (100 ug/mL)



[View online »](#)

ORF Nucleotide Sequence:

>MG226497 representing NM_199080
 Red=Cloning site Blue=ORF Green=Tags(s)

TTTTGTAATACGACTCACTATAGGGCGGCCGGAATTCGTCGACTGGATCCGGTACCGAGGAGATCTGCC
 GCC**CGGATCGCC**

ATGCGTGGAGCGGCTTTGGGGATCGGGATCGTGACAGGGACCGTGGAGGTTTGGAGCAAGAGGTGGTA
 GTGGGCTTCCCCCTAAGAAGTTTGGTAATCCTGGGGAGCGGTTACGAAAAAGAAGTGGGATTTGAGTGA
 ACTCCCTAAATTTGAGAAGAATTTTATGTTGAGCATCCAGAAGTAGCAAGACTGACTCCGTATGAGGTT
 GATGAGCTACGGCGTAAGAAAGAGATTACAGTGAGAGGGGAGATGTTTGTCCAAAACCTGTCTTTGCCCT
 TCCATCATGCTAACTTTCCACAGTATGTGATGGATGTGCTGATGGATCAGCACTTTACAGAACCCACTCC
 CATTCACTGCCAGGATTTCTTTGGCTCTTAGTGGCAGGGATATGGTTGGCATTGCACAGACTGGCTCT
 GGGAAAGACATTGGCGTATTTGCTGCCTGCGATTGTTTATATAAACCACCAGCCATACTTGGAAAGAGGAG
 ATGGTCCAATTTGCTAGTGTGGCTCCTACCAGAGAGCTTGCAGCAGGTCAGCAGGTGGCTGACGA
 TTATGGAAAATGCTCCAGGTTGAAGAGTACGTGCATTTACGGAGGTGCTCCTAAAGTCCCAAATTCGA
 GACTTGGAAAGAGGTGTTGAGATTTGCATAGCCACTCCTGGGCGCCTAATAGATTTCTGGAGTCAGGAA
 AGACAAACCTTCGCCGATGACTTACCTTGTGTTGGATGAGGCTGACCGGATGCTTGATATGGGCTTTGA
 GCCCCAGATCCGTAATTTGTTGATCAAATCAGGCCTGACCGGCAGACACTGATGTGGAGTGCAACCTGG
 CCGAAGGAAGTGAGGCAGCTTGCAGAGGATTTCTGCGGGACTACACCCAGATCAATGTGGGCAATCTGG
 AGCTGAGTGCCAAACCACAACATCCTACAGATTGTAGATGTCTGTATGGAGAGTAAAAAGACCACAAATT
 GATCCAGCTGATGGAGGAAATCATGGCGGAAAAGGAAAATAAGACTATAATATTTGTGGAGACAAAGAGG
 CGCTGTGATGACCTCACACGAAGAATGCCAGAGATGGTTGGCCTGCTATGTGTATCCATGGAGACAAGA
 GTCAACCAGAAAAGAGATTGGGTACTTAATGAGTCCGATCTGAAAAGGCTCCTATCCTCATTGCCAGGA
 TGTAGCCTCCCGTGGGCTAGATGTGGAAGATGTCAAGTTTGTATCAACTACGATTATCCAAACAGCTCA
 GAGGATTATGTTACCGTATTGGCCGAACGGCCGACCAACAAGGGCACTGCCTATACTTTCTTTA
 CCCCAGGCAACCTGAAGCAGGCTAGAGAGCTGATCAAAGTATTGGAAGAGGCCAATCAAGCCATCAATCC
 AAAATTGATGCAGCTTGTGGACCACAGAGGTGGCGGGGAGGAGGGGGAGCCGCTCACGATACCGGACT
 ACTTCTTCAGCCAACAATCCCAATCTGATGTATCAGGACGAGTGTGACCGGAGGCTTCGAGGGGTCAAGG
 ATGGTGGCCGGAGAGATTCTACAAGCTACAGGGATCGTAGTGAACCGATAGAGCCAGTTATGCTAATGG
 CAGTGGCTATGGAAGCCAAATCTGCCTTTGGGGCACAAGCAGGCCAATACACCTATGCTCAAGGCACC
 TATGGGGCAGCTGCCTATGGCACCAGTGGCTACACGGCGCAGGAGTATGCTGCTGCCACTTACGGGGCGA
 GCAGCACTGCCTCAGCAGGGAGGAGCTCTCAGAGCTCCAGCCAGCAGTTTGTGGGATAGCCGATCTGG
 GCAGCAGCCACAGCCACTGATGTCACAGCAGTTTGCACAGCCTCCAGGAGCTACCAATATGATAGGCTAC
 ATGGGGCAGACTGCTTACCAGTACCCTCCCCCTCCCCCTCCCCCTCCTCCATCTCGCAA

ACGCGTACGCGGCCGCTCGAG – GFP Tag – GTTTAA

Protein Sequence:

>MG226497 representing NM_199080
 Red=Cloning site Green=Tags(s)

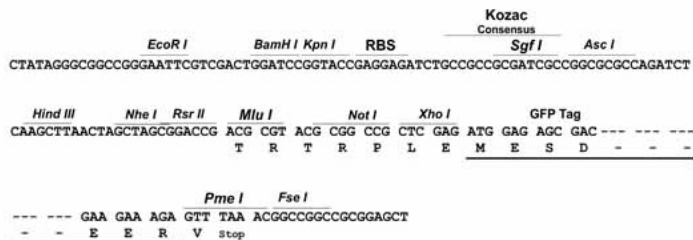
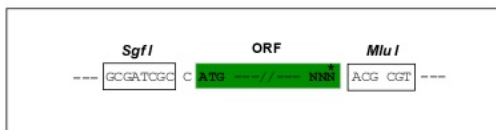
MRGGFGDRDRDRGGFGARGGSLPPKFKGNPGERLRKKKWDLSELPKFEKNFYVEHPEVARLTPYEV
 DELRRKKEITVRGGDVCPKPVFAFHANFPQYVMDVLMQHFTEPTPIQCQGFPLALSGRDMVGIQTGS
 GKTLAYLLPAIVHINHQPYLERGDGPICLVLAPTRELAQQVQQVADDDYKCSRLKSTCIYGGAPKGPQIR
 DLERGVEICIAATPGRLIDFLESGKTNLRCTYLVLDEADRMLDMGFEPQIRKIVDQIRPDRQTLMWSATW
 PKEVRQLAEDFLRDYQINVGNLELSANHNILQIVDVCMESEKDKHLIQLMEEIMAEKENKTIIFVETKR
 RCDDLTRMRRDGWPAMCIHGDKSQPERDWVLNEFRSGKAPILIAITDVASRGLDVEDVKFVINYDYPNSS
 EDYVHRIGRTARSTNKGTAYTFFTPGNLKQARELIKVLEEQAINPKLMQLVDHRGGGGGGGSRYSRT
 TSSANNPNLMYQDECDRRLRGVKDGGRRDSTSYRDRSETDRASYANGSGYSPNSAFGAQAGQYTYAQT
 YGAAAYGTSGYTAQEYAAGTYGASSTASAGRSSQSSSQFSGIGRSGQQPQLMSQQFAQPPGATNMIGY
 MGQTAYQYPPPPPPPPSRK

TRTRPLE – GFP Tag – V

Restriction Sites: SgfI-MluI

Cloning Scheme:

Cloning sites used for ORF Shutting:



ACCN: NM_199080

ORF Size: 1950 bp

OTI Disclaimer: The molecular sequence of this clone aligns with the gene accession number as a point of reference only. However, individual transcript sequences of the same gene can differ through naturally occurring variations (e.g. polymorphisms), each with its own valid existence. This clone is substantially in agreement with the reference, but a complete review of all prevailing variants is recommended prior to use. [More info](#)

OTI Annotation: This clone was engineered to express the complete ORF with an expression tag. Expression varies depending on the nature of the gene.

Components: The ORF clone is ion-exchange column purified and shipped in a 2D barcoded Matrix tube containing 10ug of transfection-ready, dried plasmid DNA (reconstitute with 100 ul of water).

Reconstitution Method:

1. Centrifuge at 5,000xg for 5min.
2. Carefully open the tube and add 100ul of sterile water to dissolve the DNA.
3. Close the tube and incubate for 10 minutes at room temperature.
4. Briefly vortex the tube and then do a quick spin (less than 5000xg) to concentrate the liquid at the bottom.
5. Store the suspended plasmid at -20°C. The DNA is stable for at least one year from date of shipping when stored at -20°C.

RefSeq: [NM_199080.2](#), [NP_951062.1](#)

RefSeq Size: 4772 bp

RefSeq ORF: 1959 bp

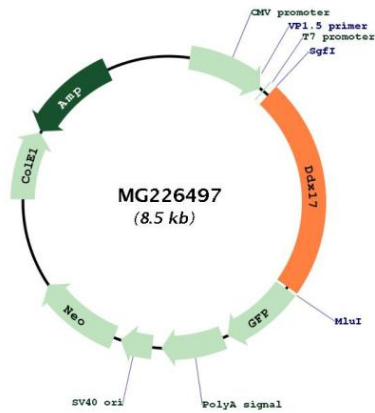
Locus ID: 67040

UniProt ID: [Q501J6](#)

Cytogenetics: 15 E1

Gene Summary: This gene encodes the mouse homolog of human DEAD box polypeptide 17. DEAD box proteins, characterized by the conserved motif Asp-Glu-Ala-Asp (DEAD). RNA helicases of the DEAD-box family are involved in a number of cellular processes involving alteration of RNA secondary structure such as translation initiation, nuclear and mitochondrial splicing, and ribosome and spliceosome assembly. Alternative splicing of this gene results in several transcript variants encoding different isoforms. [provided by RefSeq, Jul 2008]

Product images:



Circular map for MG226497