

Product datasheet for **MG226461**

Recql4 (NM_058214) Mouse Tagged ORF Clone

Product data:

Product Type:	Expression Plasmids
Product Name:	Recql4 (NM_058214) Mouse Tagged ORF Clone
Tag:	TurboGFP
Symbol:	Recql4
Synonyms:	RecQ4
Mammalian Cell Selection:	Neomycin
Vector:	pCMV6-AC-GFP (PS100010)
E. coli Selection:	Ampicillin (100 ug/mL)
ORF Nucleotide Sequence:	>MG226461 representing NM_058214 Red=Cloning site Blue=ORF Green=Tags(s)

TTTTGTAATACGACTCACTATAGGGCGGCCGGAATTCGTCGACTGGATCCGGTACCGAGGAGATCTGCC
GCC**CGATCGC**C

ATGGAGCGGCTCGCGACCGTTTCGCGCGCGGCTACAGGAGTGGAAACGCGCTTTTGCACGGCTGCACGGGC
GACGGCCAGCGAAGGGGATGTGGAGGCGGCACCTGAAGAGACCCGCGCCTCTACCGTGTAGTACCGTAA
CCTAAAGCAGGCGGTGCGTCAGGCTGACGACAGACATCGTGTCTAGAGCAATCACTTGCCGAGGCAGT
GAGGAGGCACAGGAGCCAAGCTGCTGGGTCCCCACCTGAGTCGAGCTGCAACGCAGAATACGCAGTCTA
TGCCAAAACAGAGCCTACTGAGTTCTGTACAAGACTATGGGAAGAGGCTCAAAGCCAATCTGAAAAAC
AACACAGACTGGACCAACCCAGAGCAGAAAACCTCCAGCTTCAGAAGAGATCCTTGTCCACAGTTCCTGCC
CCAAGGCCACCGGCTCAAAGACTGAATCCCCCTGTCCAGACGAAGCTGACGATGCACTTCTCGGGTTC
CTGAGCCCCGGCCGAGGCTGGGCCAGCTCCAGCAGCTCCGATCATCCCTCAGCCGGAGGTTGACTTCCCT
AGACCCTGGTTGGTTAGAGAGGTGTCAACAGAGTTTCAGATCTTCTAGAGGTTCCGGGTGCTTGTGGG
CTTGACCTGAGTGCAGAGGAGTACAGCCTCAGATGTCAGGCAAGGTGAACATCGCTGATCCTGACATCC
AGTCAGAAGTATCTGTACAGAGCCAGAGGCCATAGCCCAACAGCCAGCCAGGTTTTGTACAGAGCCC
CAAATCCATCAACAGTAAAGGCAGGAAGCGGAAGTGAATGAGAAGGGGGAGGACTTTCACAAGACCAG
CCCAGCAGCGGAGCAGGACCCCTGTCTGAGGGAGCCAGGCTACAGTACATGGGCAAGACCCTCCAGGAG
AACCCACACAAGTGAATGCCCTCAGCCATGCAATTCCTCAAACCAGGCCAGGACAGAGAAGGCTAAGGG
CACAACCCACCTCCATGCCTCTCCTCGACCAGTTCCTAGACAGAGGGAATATATTGACTCAACATG
AAAAACAACGCTTTGTACGAGTTGGGGCAATCGGGCAGGCTTCTCCGTAAGCAGGTATGGAAGCAAA
AGTGGAAGAAGAAACAAGCTGCGTTTGGGGGAAGTGGACCCAGGGCCACAGACAAGGACACTTGTTCG
GTGTGGGCAGTTTGGTCACTGGGCATCCAGTGTCCCAACCAGGCCCCACCTGACCGTCCAAGAGGAA
GGTGACAGGGATGACAAACAGCCATTTCCACCTTGAAGAAGTAGCACAGAGGACAGGCACTGCTTCT
GTCACCACTCTGGTGAGGAAACACAGCCTGCTGCGCCAGAGCTACAGGTGCCTCATTGCCCAACCCCAAT
GTCACCCCTTACCCACCGGACCTTTGGGACAAGTAGCAGAAACCCCTGCTGAAGTATTCAGGCCCTA



[View online »](#)

GAGCGGCTAGGGTACCGAGCCTTCGCCCTGGGCAAGAGCGTGCAATCATGCGGATTCTTTCTGGCATCT
CTACTCTGTTAGTGTGCCACGGGTGCTGAAAAGTCTCTGTGCTACCAGCTTCCTGCACTGCTCTATGC
CCAGCGAAGCCCCCTGCCTCACACTCGTGGTCTCGCCTCTCCTGTCACTCATGGATGACCAGGTGTCCGAT
CTGCCTTCATGTCTGAAGGCAGCCTGCCTCCACTCAGGAATGACCAAGAAAACAACGAGAGTCTGTCTTGA
AGAAGGTACGGGCAGCCCAGGTGCACGTGCTGATCGTGTCCCCAGAGGCCTTGGTGGGGTGGGGGCTAG
GGGTCCCAGCAGCCTCCCCAGGCCGCTCAGTGCCTCCAATTGCCTTCGCCTGCATTGATGAGGTCCAC
TGCCCTCTCAGTGGTCACATAACTTCCGGCCCTGTACCTACGTGTTTGCAAAGTTCTCCGGGAGCATA
TGGGGGTGCGCTGCTTCTTGGGTCTCACAGCCACAGCCACGAAGCACTGCTCGAGATGTGGCTCAGCA
CCTTGGCATAGCTGGCGAGTTTGTAGCTCAGCGGGTCCAGCAACATCCCTGCCAATCTGCACCTCTCCGTG
TCCATGGATAGAGACTCAGACCAGGCTCTGGTGACATTGCTGCAAGGGGACCGTTTTTCGTACCCTGGATT
CAGTTATCATTTACTGCACTCGGCGAAAGGATACAGAACGGGTGGCTGCACTCCTCCGCACCTGCCTGTC
CATGGTGGGCGACTCAAGGCCAAGAGGCTGTGGCCCCGAGGCTATAGCTGAAGCCTACCATGCTGGCATG
AGCAGCCAGGAACGGCGACGAGTACAACAGGCCTTCATGCGGGGCCACCTGCGCATGGTAGTGGCCACGG
TAGCATTTGGGATGGGACTGGACCGTCCAGATGTTCCGGGCTGTGCTGCACCTGGGACTGCCTCCAAGCTT
CGAGAGCTACGTCAAGCTATCGGCCGTGACGGGCGTGATGGGAAGCCTGCCATTGCCACCTATTCATG
CACCCCCAGGGTGAAGACCTTTGGGAAGTGCAGCAGACATGCCACGCTGACAGCACTGACTTCTAGCTG
TGAAGAGGCTGGTGCAGCGTGTGTTCCACCCTGCACCTGCAGCCAGAGACCTGTTTCCAAGTCTCACC
TGAGGAAGTCAAAGAGCACAGTGGCCAACAACATACCCTGTAAGTGGGCCAGGCCTGCCTGGGCCATGAG
CGGGCACTCCCAGTGCAGTCTACAGTACAGGCTCTGGACATGACAGAGGAGGCTATTGAGACTCTGCTGT
GCTATTTGGAAGTACACCCTCGGCACTGGTTGGAGCTGCTGCCCTGGACCTACGCCCAAGTGGCCATCTGCA
TTGCCTTGGCGGCGAGTGGCCAGTGAAGCTCTGGCCACAGGTGTCCCCTTTGGCTGCATGCCAGGCC
AAGTGGCCACCTAAAGACACAAGTCAAGGCAGGAGCTCCTTAGAGTTTGGTGTGGTGGAACTGGCAGACT
CGATGGGCTGGAAGTTGGCCTCTGTACGGCAGGCTCTCCACCAGCTGAAGTGGGACCCAGAGCCAAAGAA
AGGCGCAGCACAGGGCACCGGAGTGTGTTGAAGTTCAGCGAGTTGGCCTTTACCTGCACAGTCCGCGGG
GACCTGACAGATGAGGAAAAGGACCAGATCTGTGACTTTCTGTACAACCGTGTGCAGGCTCGTGAACACA
AGGCCCTGGCCCACCTACACCAATGTCCAAGGCCTTTGAAAGTGTGGCCTTTCCAGTTGTGGACCCTG
TTTAGAGCAGTCTAATGAGGAGCACAGCAATCAGGTGAAGACCCTGGTCAGCTACTACTTTGAGGAAGAG
GAGGAGGAGGAAGAACTATGACGGCACTCAGGGTCCAAAACCTGGGCAGACTCAGCTTCCAGGACTGGG
AGGACCAATACGCCGGGATGTCCGCCAGCTCCTGTCCCTGAGGCCAGAAGAAAGGTTTTAGGAAGGGC
TGTGGCCCGCATCTTCATGGCATTGCGAGTCCATGCTACCCAGCCAGGTGATGGGCTGGACCGGCGC
TTCTGGAGGAAGTACCTACACCTGGACTTTCATGCCCTGATGCACCTAGCTACAGAAGAGCTCCTGCTGA
GAGGCCGA

ACGCGTACGCGGCCGCTCGAG - GFP Tag - GTTTAA

Protein Sequence: >MG226461 representing NM_058214
 Red=Cloning site Green=Tags(s)

```

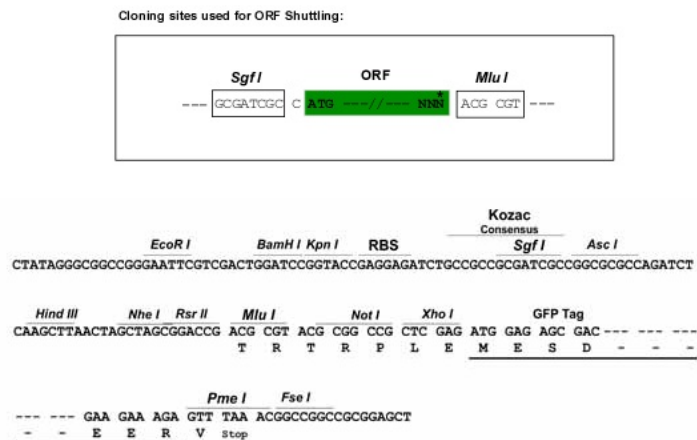
MERLATVRRARLQEWERAFARLHGRPPAKGDVEAAPEETRALYREYRNLKQAVRQADDRHRVLEQSLAEAA
EEAQEPSCWGPPLSRAATQNTQSMKQSLSSVQDYGKRLKANLKNNTQTGPTQSRKLLQKRSLSVPA
PRPPGSKTESPCPDEADDALPRVPEPRRLGQLQLRSSLRRRLTSLDPGWLERCHNRVSDLLEVPGACG
LDLSAEESQPQMSGKVNIAADPDIQSEVSVQSPEAIAQPPAQLSQSPKINSKGRKRKWEKGEDFAQDQ
PSSGAGPLSEGARATVHGQDPPGEPQVNVPPQPCNSNQARTEKAKGTTHLHASPRPASLDRGNYIRLNM
KNKRFVVRVGANRGRLLRKQVWKQKWKKKQAAFGGSGPRATDKDTCFRGQFGHWASQCSQPGPTLVQEE
GDRDDKQPISTLEEVAQRTGTASCHHSGEETQPAPELQVPHCPTMSPLYPPGPLGQVAETPAEVFQAL
ERLGYRAFPRGQERAIMRILSGISTLLVPTGAGKSLCYQLPALLYAQRSPCLTLVVSPLLSDMDDQVSD
LPSCLLKAAACLSHGMTKKQRESVLKVVRAAQVHVLIVSPEALVCGGARGPGSLPQAAQLPPIAFACIDEVH
CLSQWSHNFRPCYL RVCKVLRHMGVRCFLGLTATATRSTARDVAQHLGIAGEFELSGSANIPANLHLSV
SMDRDSQALVTLQGDRTLDVSVIYCTRRKDTERVAALLRTCLSMVGDSTRPRGCGPEAIAEAYHAGM
SSQERRRVQAFMRGHLRMVVATVAFMGMLDRPDVRAVLHLGLPPSFESYVQAIGRAGRDKGPAHCHLFM
HPQGEDLWELRRHAHADSTDFLAVKRLVQRVFPCTCSQRPVSKSSPEEVKEHSGQQTYPVLGQACLGHE
RALPVQSTVQALDMTEEAITELLCYLELHPRHWLELLPWTYAQCHLHCLGGSAQLQALAHRCPLAACQA
KWPPKDTSQGRSSLEFGVVELADSMGWKLASVRQALHQLKWDPEPKGAAQGTGVLVKFSELAFLHLSRG
DLTDEEKDQICDFLYNRVQAREHKALHLHQMSKAFRSVAFPPSCGPCLEQSNEEHSNQVKTLSVSYFEEE
EEEEETMTDTQGPKPGQTQLQDWEDQIRRDVRLQLSLRPEERFSGRAVARIFHGIASPCYPAQVYGLDRR
FWRKYLHLDFHALMHLATEELLRGR
  
```

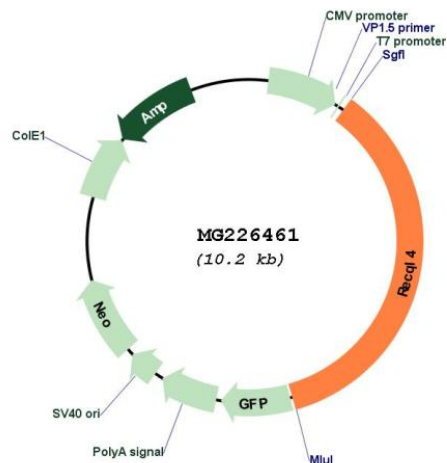
TRTRPLE - GFP Tag - V

Restriction Sites:

SgfI-MluI

Cloning Scheme:



Plasmid Map:


ACCN: NM_058214

ORF Size: 3648 bp

OTI Disclaimer: The molecular sequence of this clone aligns with the gene accession number as a point of reference only. However, individual transcript sequences of the same gene can differ through naturally occurring variations (e.g. polymorphisms), each with its own valid existence. This clone is substantially in agreement with the reference, but a complete review of all prevailing variants is recommended prior to use. [More info](#)

OTI Annotation: This clone was engineered to express the complete ORF with an expression tag. Expression varies depending on the nature of the gene.

Components: The ORF clone is ion-exchange column purified and shipped in a 2D barcoded Matrix tube containing 10ug of transfection-ready, dried plasmid DNA (reconstitute with 100 ul of water).

Reconstitution Method:

1. Centrifuge at 5,000xg for 5min.
2. Carefully open the tube and add 100ul of sterile water to dissolve the DNA.
3. Close the tube and incubate for 10 minutes at room temperature.
4. Briefly vortex the tube and then do a quick spin (less than 5000xg) to concentrate the liquid at the bottom.
5. Store the suspended plasmid at -20°C. The DNA is stable for at least one year from date of shipping when stored at -20°C.

RefSeq: [NM_058214.3](#), [NP_478121.2](#)

RefSeq Size: 3651 bp

RefSeq ORF: 3651 bp

Locus ID: 79456

UniProt ID: [Q75NR7](#)

Cytogenetics: 15 D3

Gene Summary: DNA-dependent ATPase (By similarity). May play a role in development of the palate and the limbs. May modulate chromosome segregation.[UniProtKB/Swiss-Prot Function]