

Product datasheet for **MG226459**

Dhx8 (NM_144831) Mouse Tagged ORF Clone

Product data:

Product Type:	Expression Plasmids
Product Name:	Dhx8 (NM_144831) Mouse Tagged ORF Clone
Tag:	TurboGFP
Symbol:	Dhx8
Synonyms:	Ddx8; mDEAH6; mKIAA4096
Mammalian Cell Selection:	Neomycin
Vector:	pCMV6-AC-GFP (PS100010)
E. coli Selection:	Ampicillin (100 ug/mL)
ORF Nucleotide Sequence:	>MG226459 representing NM_144831 Red=Cloning site Blue=ORF Green=Tags(s)

TTTTGTAATACGACTCACTATAGGGCGGCCGGAATTCGTCGACTGGATCCGGTACCGAGGAGATCTGCC
GCC**CGATCGCC**

ATGGCTGTAGCCGTGGCCGCCCGGGTCTTAATGGGCTCGGAGCCCGCCCGGGAAGAAGCTCGCTA
AACTTGAGTACCTGTCTTTGGTGTGCAAGGTTTGCACGGAGCTGGACAATCACTTGGGCATCAACGACAA
GGATCTGGCTGAATTTGTCATCAGTCTTGCTGAGAAAAACTACCTTTGATACTTTAAGGCTTCTCTG
GTCAAAAATGGTGCAGAATTCACAGATTCTTTATTAGCAACCTCTGCGTCTCATAAGACCATGCGGC
CTCCTGCAAAGCCTTCTACCAGTAAAGATCCGGTTGTTAAACCCAAAACCGAAAAAGAAAGCTGAGGGA
ACTCTTCCCGTCTCTGCCAGCCGGACAACCTTCAGCTCGGACCATGTTGGATGAGGAAGATGTGAAA
GTCGCTGTGGACGTCTTGAAAGAGCTGGAAGCTTTAATGCCAGCGCAGCAGGCCAAGAGAAACAAAGAG
ACCCTGAGCACAGGGACAGGACAAAGAAGAAGAAGAGGAGTCCGAGCCGAGACCGAGATCGAGACCGAGA
CCGAGACCCGGGACCGGGACCGGGACCGGGACCGGGACCGGTGACAAGGACCGAGAACGAGATAGAGATCGA
GAACGAGACAGAGAGCGAGATAGAGAGAGAGACCATAAGCGGAGACACCGATCACGCTCTCGGTCACATT
CTAGAACCCGGGAGAGGACTAAGGGGAAATCTAGATACAGATCTAGGAGCAGAAGTCAGAGTCCCTTCAA
AGATCGGAAAGACCGAGAAAAGTATGGGGAGAGAACTGGACAGATGGCGGGATAAGCATGTGGACCGC
CTCCCCCGGAAGAGCCTGCCATTGGAGATATTTACAATGGCAAAGTGACCAGTATCATGCAGTTCCGTT
GCTTTGTGACGCTGGAAGGCCTAAGGAAGCGGTGGGAAGGCCTGGTGCACATCTCTGAGCTCCGACGGGA
AGGTCGAGTGGCCAATGTGGCTGATGTTGTGAGTAAAGGCCAGAGAGTCAAGGTCAAAGTTCTGTCTTTC
ACTGGAACCAAGACCAGCCTGAGCATGAAGGATGTGGACCAAGAGACAGGGGAAGACCTAAACCCAAACA
GACGGAGAAATCTGGTTGGCGAGACCAATGAAGAGACGTCAATGCGGAACCCAGACAGACCCACTCACCT
CTCCCTTGTGACGCTCCTGAAGTAGAGGATGACTCGCTGGAGCGCAAGCGGCTCACCCGAATCTCTGAC
CCAGAGAAGTGGGAGATCAAACAGATGATTGCTGCCAATGTGCTTTCCAAAGAAGAGTTCCAGACTTCG
ACGAAGAGACTGGCATTCTCCCCAAGGTGGATGATGAAGAAGATGAGGATCTTGAATTTGAAGTGGTTGA
AGAGGAGCCTCCGTTCTGAGAGGGCATACCAAGCAGAGCATGGATATGAGCCCCATCAAATCGTTAAG



[View online »](#)

AACCCAGATGGCTCACTCTCCCAAGCAGCCATGATGCAGAGTGCCTGGCCAAGGAAAGACGGGAGCTGA
AGCAGGCCAGCGGAAGCAGAGATGGATTCTATACCCATGGGGCTCAACAAACTGGGTTGATCCCTT
GCCCGATGCGGAAGGCAGGCAGATTGCTGCCAACATGAGGGGATTGGGATGATGCCCAACGACATTCCT
GAGTGGAAAGAAGCATGCCTTTGGGGCAACAAAGCTTCTTATGGGAAGAAGACCCAGATGTCAATCCTTG
AGCAGAGAGAGAGCCTGCCATCTACAACTGAAGGAGCAGCTGGTGCAGGCTGTGCATGACAATCAGAT
CCTAATTGTAATTGGAGAGACAGGGTCTGGGAAGACAACACAGATCACCCAGTACCTGGCAGAGGCAGGC
TATACTCCAGGGGCAAGATTGGGTGTACCCAGCCAGAAGAGTGGCAGCTATGTCTGTGGCCAAAAGAG
TCTCAGAAGAGTTTGGTTGTTGCCTTGGTCAAGAGGTGGGCTACACCATTGATTGGAGATTGCACCAG
CCCAGAAACAGTCATCAAGTACATGACAGATGGCATGCTGCTAAGAGAGTGCCTGATTGACCCCGATCTC
ACTCAGTATGCCATCATTATGTTGGATGAAGCACACGAGAGGACCATTACACAGATGTGCTCTTTGGAT
TGTTGAAAAGACAGTTCAAAAACGACAAGACATGAAGCTGATTGCACCTCAGCCACGCTGGATGCGGT
GAAGTTTTCTCAGTACTTCTATGAAGCACCCATCTTCACAATCCCAGGTGCAACCTATCCAGTGGAAATT
CTGTACACAAAGGAGCCGAAACAGACTATTTGGACGCTAGCCTGATCACGGTATGCAGATCCATCTGA
CAGAGCCGCCAGGTGACATCTTGGTTTTCTTGACTGGTACGGAAGAGATCGACACTGCTTGTGAGATCCT
GTATGAAAGAATGAAGTCCCTGGACCTGATGTCCAGAGTTGATCATCCTCCCAGTGTACTCTGCCCTT
CCGAGTGAGATGCAGACCCGAATCTTGTATCCAGCTCCCCCTGGTAGCAGAAAGGTGGTATTGCCACCA
ACATTGCAGAAACATCTCTGACCATCGACGGCATCTACTATGTGGTTGACCTGGATTTGTGAAGCAGAA
AGTGTACAATTCTAAAACAGGGATCGATCAGCTTGTGGTGACACCTATTTCTCAGGCTCAAGCAAAGCAG
AGAGCTGGCCGGGCTGGGAGAAGTGGCCAGGGAAGTGTACAGACTGTACACGGAGCGTGCCTACCCGG
ATGAAATGCTGACCACCAATGTACCGGAAATCCAGAGAACCAACTGGCCAGCACAGTGTGTCCCTCAA
GGCCATGGGTATTAATGACCTGCTGTCTTTGACTTTCATGGATGCCCCACCGATGGAAACTCTGATCAG
GCCATGGAGCAGCTGTATACACTGGGGCCCTGGACGACGAGGGCCTGCTCACTCGCTGGGCCGAGGA
TGGCAGAGTTCCTCTGGAGCCAATGCTGTGCAAAATGCTCATCATGTCTGTGCATCTGGGCTGCAGCGA
AGAGATGCTAACTATCGTGCCATGCTGTCTGTGCAGAACGTCTTCTACCGACCCAAGGATAAACAGGCC
CTTGACAGATCAGAAGAAAGCCAAATTCCACCAGACAGAAGGGGACCACCTCACCTGCTGGCCGTATACA
ACTCCTGGAAGAACAACAATTCTCCAACCCGTTGGTGTATGAGAATTTTATTCAGGCTCGTTCCCTACG
CCGTGCCCAGGACATTCGGAAGCAGATGTTAGGCATAATGGACAGGCACAAGCTGGACGTGGTCTCCTGT
GGCAAATCCACAGTCCGAGTGCAGAAGGCCATCTGCAGTGGTCTTCCGGAACGCTGCCAAGAAGGACC
CACAGGAAGGCTACCGACTCTGATAGACCAGCAGGTGGTGTATATCCACCCCTCCAGTGTCTCTTCAA
CAGACAGCCCGAATGGTGGTATACCACGAACTTGTGCTGACCACAAAGGAATACATGCGTGAGGTACC
ACCATCGACCCCGGTGGCTTGTGGAGTTTGTCCGGCTTCTTCAAAGTTTCTGACCCAACCAAGCTAA
GCAAGCAGAAGAAACAGCAGCGCCTGGAGCCTCTGTACAATCGGTATGAGGAGCCGAACGCTGGAGAAT
CTCCCAGCCTTCGCGCGCGC

ACGCGTACGCGGCCGCTCGAG – GFP Tag – GTTTAA

Protein Sequence: >MG226459 representing NM_144831
 Red=Cloning site Green=Tags(s)

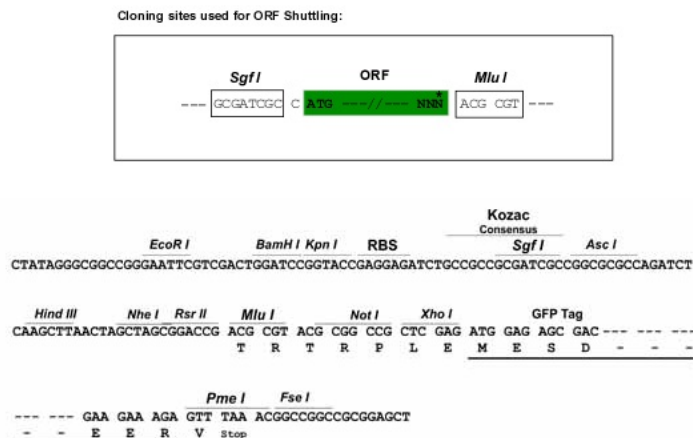
MAVAVAAAGVLMGSEPGPAEELAKLEYLSLVSKVCTELDNHLGINDKDLAEFVISLAEKNTTFDTFKASL
 VKNGAEFTDSLINLLRLIQTMRPPAKPSTSKDPVVKPKTEKEKLRELPVLCQPDNPSARTMLDEEDVK
 VAVDVLKELEALMPAAAGQEQRDPEHRDRTKKKKRSRSRDRDRDRDRDRDRDRDRDRDRDRDRDRDR
 ERDRERDRERDHKRRHRSRSRSRSHSRTRERTKGSRSYRSRSRSPFKDRKDREKYGERNLDRWRDKHVDR
 PPEEPAIGDIYNGKVTSIMQFGCFVQLEGLRKRWEGLVHISELRREGRVANVADVVSQGRVVKVLSF
 TGTKTSLSMKDQVQETGEDLNPNRRRNLVGETNEETSMRNPDRPHTLSLVSAPVEDDSLKRKRLTRISD
 PEKWEIKQMIANVLSKEEFPDFDEETGILPKVDDEDELEIELVEEPPFLRGHTKQSMDMSPKIVK
 NPDGSLQAAMMOSALAKERRELKQAQREAMDSIPMGLNKHWDPLPDAEGRQIAANMRGIGMMPNDIP
 EWKKHAFGGNKASYGKKTQMSILEQRESLPYKLKEQLVQAVHDNQILIVIGETGSGKTTQITQYLAEAG
 YTSRGKIGCTQPRRVAAMSVAKRVSEEFGCCLGQEVGYTIRFEDCTSPETVIKYMTDGMILLRECLIDPDL
 TQYAIIMLDEAHERTIHTDVLGFLKKTQKRQDMKLI VTSATLDAVKFSQYFYEAIFTIPGRTPVEI
 LYTKPEPETYLDASLITVMQIHLTEPPGDILVFLTGQEEIDTACEILYERMKSLGPDVPELIIIPVYSAL
 PSEMQTRIFDPAPPGSRKVVIATNIAETSLTIDGIYYVVDPGFVKQKQVNSKTGIDQLVVTPISSQAQAKQ
 RAGRAGRTGPGKCYRLYTERAYRDEMLTTNVPEIQRTNLASTVLSLKAMGINDLLSFDMDAPPMETLIT
 AMEQLYTLGALDDEGLLTRLGRRMAEFPLEMCKMLIMSVHLGCSEMLTIVSMLSVQNVFYRPKDKQA
 LADQKAKAFHQTEGDHLTLAVYNSWKNNKFSNPWCYENFIQARSLRRAQDIRKQMLGIMDRHKLDVVS
 GKSTVVRVQKAICSGFFRNAAKKDPQEGYRTLIDQQVVYIHPSSALFNRQPEWVVYHELVLTTKEYMREVT
 TIDPRWLVAFAPAFKVS DPTKLSKQKQQRLEPLYNRYEENAWRISRAFRRR

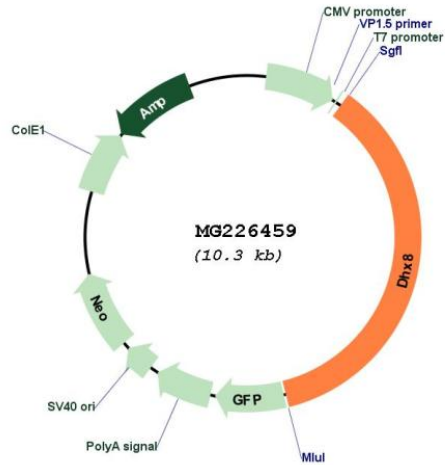
TRTRPLE - GFP Tag - V

Restriction Sites:

SgfI-MluI

Cloning Scheme:



Plasmid Map:


ACCN: NM_144831

ORF Size: 3732 bp

OTI Disclaimer: The molecular sequence of this clone aligns with the gene accession number as a point of reference only. However, individual transcript sequences of the same gene can differ through naturally occurring variations (e.g. polymorphisms), each with its own valid existence. This clone is substantially in agreement with the reference, but a complete review of all prevailing variants is recommended prior to use. [More info](#)

OTI Annotation: This clone was engineered to express the complete ORF with an expression tag. Expression varies depending on the nature of the gene.

Components: The ORF clone is ion-exchange column purified and shipped in a 2D barcoded Matrix tube containing 10ug of transfection-ready, dried plasmid DNA (reconstitute with 100 ul of water).

Reconstitution Method:

1. Centrifuge at 5,000xg for 5min.
2. Carefully open the tube and add 100ul of sterile water to dissolve the DNA.
3. Close the tube and incubate for 10 minutes at room temperature.
4. Briefly vortex the tube and then do a quick spin (less than 5000xg) to concentrate the liquid at the bottom.
5. Store the suspended plasmid at -20°C. The DNA is stable for at least one year from date of shipping when stored at -20°C.

RefSeq: [NM_144831.2](#), [NP_659080.2](#)

RefSeq Size: 4344 bp

RefSeq ORF: 3735 bp

Locus ID: 217207

UniProt ID: [A2A4P0](#)

Cytogenetics: 11 D

Gene Summary: Involved in pre-mRNA splicing as component of the spliceosome. Facilitates nuclear export of spliced mRNA by releasing the RNA from the spliceosome.[UniProtKB/Swiss-Prot Function]