

## Product datasheet for **MG226445**

### Usp33 (NM\_133247) Mouse Tagged ORF Clone

#### Product data:

Product Type:	Expression Plasmids
Product Name:	Usp33 (NM_133247) Mouse Tagged ORF Clone
Tag:	TurboGFP
Symbol:	Usp33
Synonyms:	9830169D19Rik; AA409780; Vdu1
Mammalian Cell Selection:	Neomycin
Vector:	pCMV6-AC-GFP (PS100010)
E. coli Selection:	Ampicillin (100 ug/mL)



[View online »](#)

**ORF Nucleotide Sequence:**

>MG226445 representing NM\_133247  
 Red=Cloning site Blue=ORF Green=Tags(s)

TTTTGTAATACGACTCACTATAGGGCGGCCGGAATTCGTCGACTGGATCCGGTACCGAGGAGATCTGCC  
 GCC**CGGATCGCC**

ATGACGACTTTTCGAAATCATTGTCACATTTGGATTGAGTTGGTGAATAACGAAAGAGGACTTGATAC  
 AGAAATCTCTCGGCGCTTGTGAGGACTGTAAAGTCAGAGGACCAACCTGTGGCGTGCCTGGAGAATAG  
 GTGCTCCTATGTTGGCTGCGGGGAGTCGCAAGTGACCACAGCACCATACTCGCAGGAGACAAAGCAT  
 TATCTAACTGTGAACCTCACCCTCTTCGAGTATGGTGTATGCTTGCAGCAAAGAAGTATTTTTGGATA  
 GAAATAGGAACTCCTCCTTACCTCATGTAAGACAGCCTCAACAAACACAAGAAAACAGTGTCCA  
 GGATTTTAAAATCCCAGTAATCCAGCATTGAAAACCCCATGGTTGCTGTGTCTGAAGATCTGGATATA  
 GAAGTGAAGAGGAGACGAGCTGAAGGCTAGAGGCTGACAGGTTTAAAAACATTGGAATACTTGTT  
 ATATGAACGCGGCTGCAGGCTCTTTCTAACTGCCACCTTTGACACAGTCTTTCTTGATTGTGGAGG  
 ACTGGCTAGAACAGATAAGAAACCAGCAATTTGTAAAAGTTATCTCAAATAATGACCGAGTTGTGGCAC  
 AAGAGCAGGCCAGGATCTGTTGTCCGGCTAATCTGTTCCAAGGAATAAAAGTAAATCCAACCTTTTC  
 GAGGTTATTCTCAGCAGGATGCCAGGAATTCCTTCGCTGTCTAATGGACCTGCTTCATGAGGAGCTGAA  
 GGAGCAGGTATGGAATGGAGGAAGAGCCTCAACACTAACTTCTGAGGAGACGGTGGAGGAAGAGAAG  
 AGCCAGTCAGATGTGGATTTTTCAGTCGTGCGAGTCTTGTAGCAGCAGCGAAGAGCAGAAAATGAGAGTG  
 GCTCCAAAGGCTTTCCTGAGGACAGCAATGAGACCACCATGCTCATCCAGGACGAGGATGACCTGGAGAT  
 GGCCAAAGACTGGCAGAAAGAGAAGGTGTGCAATAAGTCAACAAGGCAAATGCCGATGTAGAATGGAC  
 AAAGACAGGGACACAGTGTGAAACAGTTGACCTAAACAGCCAGGAGACCGTCAAAGTGCAGATACAGC  
 GCAGACCCTCAGAATCTATCACTGATGTCCATCTGAATGACCTAGCTACGTCACAGATCCTTCTCAAA  
 TGAAGTGTAGTCCACGGTTATCAGCAAGCCCTCCTAAGCTAGGCACTGTGTGGCCAGGACTGTGCGCT  
 CCACACAAGAAAGCTCAGTCTACATCTGCAAAAGAGGAAAAAGCAGCATAAGAAATACAGAAGTGTATCT  
 CCGACATATTCGATGGAACAGTCATTAGCTCGGTACAGTGTCTGACGTGCGATAGGGTGTCTATAACCT  
 CGAGACCTTTCAGGATCTGCTCTGCCGATTCTGGCAAGGAGGACCTGGCTAAGCTGCACTCCTCCAGT  
 CACCCAACTATAGTCAAAGCAGGGTATGTGGTGAAGCGTACGCCCGCAGGGTGGATAGCTTTCTTCA  
 TGGAGTATGTGAAGAGTTTGTGTCTCATGTGTCCCTAGCTGGTTTTGGGGTCCAGTAGTTACCTTGCA  
 AGATTGCTTGTGCTCCTTCTCGCCAGAGATGAACTTAAAGGTGACAACATGTACAGTTGTGAAAAATGC  
 AAAAGTTGAGGAATGGAGTAAAGTTTTGTAAAGTACAGAAGTTTCTGAGATTTTGTGTATCCACCTTA  
 AAAGATTTGACATGAACTGATGTTTTCCACCAAATAGCACCCATGTTTCTTCCCCCTGGAAGGCCCT  
 CGATCTTCAGCCATTTCTTGAAAGGACAGCCAGCTCAGATTGTGACATATGATCTCCTGTGACATC  
 TGTCCACATGGGACTGCAAGTAGTGGGCACTACATTGCCTACTGCCGAAACAATTTAAATAACCTGTGGT  
 ATGAGTTTGTGACAGAGCGTCACTGAAGTTTCAGAGTCCACTGTACAGAAATGCCGAGGCCACTGCTCT  
 TTTCTACAGGAAGAGCAGTGAAGAGGCACAAAAGGAGAGGCGGAGGATATCAAATTTGTTGAACATCATG  
 GAACCTAGCCTCCTTCAGTTCTACATATCTCGACAGTGGTTGAATAAATTTAAGACCTTTGCTGAACCTG  
 GCCCTATTTCAAATAATGATTTTCTCTGTATCCATGGAGGTATTCCTCCACGAAAAGCGAGTTATATTGA  
 AGACTTAGTTTTGATGCTGCCTCAGAACATTTGGGATAACCTCTATAGCAGGTATGGAGGAGGCGCTGT  
 GTCACCATCTCTACATCTGCCACACCTGCCAAATTTAGTTAGAGAAGATTGAAAAACGAAGAAAAACCG  
 AATTGAAATTTTTATTGCGCTCAACAGAGCATTTCAGAGGAGGACTCCCCAGCTACTTTTTACTGTAT  
 CAGCATGCAAGTGGTTAGAGAATGGGAGAGTTTTGTAAGGGTAAGGATGGAGATCCCCAGGTCCAATC  
 GACAACACTAAAATGCGGTTACTAAAATGTGGCAGTGTGATGCTCAAGCAAGGAGCAGACTCTGGTCAAA  
 TTTCAGAAGAAACATGGAATTTCTGCAGTCTATATATGGTGGGGGCCCTGAAGTTATCTCCGACCTCC  
 AGTTGTTGATGTTGACCTGATGACTCCAAGCAGAGGAAAAGATTGAAGTAGAACTCGCTCTTTG

**ACGCGTACGCGGCCGCTCGAG** - GFP Tag - **GTTTAA**

Protein Sequence: >MG226445 representing NM\_133247  
 Red=Cloning site Green=Tags(s)

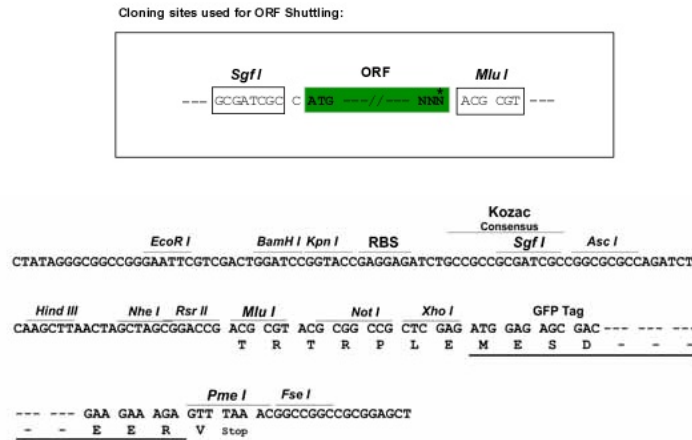
MTTFRNHCPHLDSVGEITKEDLIQKSLGACQDCKVRGPNLWACLENRCSYVGCGESQVDHSTIHSQETKH  
 YLTVNL TTLRVWCYACSKVEFLDRKLGTPPSLPHVRQPQTQENSVDQFKIPSNPALKTPMVAVSEDLDI  
 EVEEDELKARGLTGLKNIGNTCYMNAALQALSNCPLTQFFLDCGGLARTDKKPAICKSYLKLMTLWH  
 KSRPGSVVPANLFGIKTVNPTFRGYSQQDAQEFRLCLMDLLHEELKEQVMEMEEEEPQTLTSEETVEEEK  
 SQSDVDFQSCESCSSSEKAENESGSKGFPEDSNETTMLIQDEDDLEMAKDWQKEKVCNKINKANADVLD  
 KDRDTCVETVDLNSQETVKVQIHRASESITDVHLNDLATSQILPSNESVSPRLSASPPKLGSLWPLSP  
 PHKKAQSTSARKKQHKKYRSVISDIFDGTVISSVQCLTCDRVSITLETQDL SLPPIPKEDLAKLHSS  
 HPTIVKAGSCGEAYAPQGWIAFFMEYVKRFVSVSWFVWGPVVTLDCLAAFFARDELKGNMYSCEKC  
 KKLNRNGVKFKVKQKPEILCIHLKRFHRLMFSTKISTHVSFPLEGLDLQPF LAKDSPAQIVTYDLLSVI  
 CHHGTASSGHYIAYCRNLLNLLWYEFDDQSVTEVSESTVQNAEAYVLFYRKSSEEAQKERRRISNLLNIM  
 EPSLLQFYISRQWLNKFKTFAEPGPI SNDFL CIHGGIPPRKASYIEDLVLMLPQNIWDNLYSRYGGA  
 VNHLYICHTCQIELEKIEKRRRTELEIFIRLNRAFQEEDSPATFYCISMQWFREWESFVKGKGDGPPGPI  
 DNTKIAVTKCGSVMLKQADSGQISEETWNFLQSIYGGGPEVILRPPVHVDPDVLQAEKIEVETRSL

TRTRPLE - GFP Tag - V

Restriction Sites:

SgfI-MluI

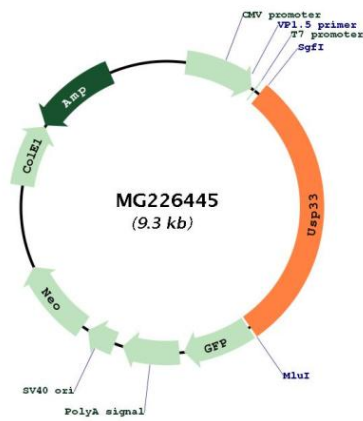
Cloning Scheme:



ACCN:	NM_133247
ORF Size:	2727 bp
OTI Disclaimer:	The molecular sequence of this clone aligns with the gene accession number as a point of reference only. However, individual transcript sequences of the same gene can differ through naturally occurring variations (e.g. polymorphisms), each with its own valid existence. This clone is substantially in agreement with the reference, but a complete review of all prevailing variants is recommended prior to use. <a href="#">More info</a>
OTI Annotation:	This clone was engineered to express the complete ORF with an expression tag. Expression varies depending on the nature of the gene.
Components:	The ORF clone is ion-exchange column purified and shipped in a 2D barcoded Matrix tube containing 10ug of transfection-ready, dried plasmid DNA (reconstitute with 100 ul of water).
Reconstitution Method:	<ol style="list-style-type: none"><li>1. Centrifuge at 5,000xg for 5min.</li><li>2. Carefully open the tube and add 100ul of sterile water to dissolve the DNA.</li><li>3. Close the tube and incubate for 10 minutes at room temperature.</li><li>4. Briefly vortex the tube and then do a quick spin (less than 5000xg) to concentrate the liquid at the bottom.</li><li>5. Store the suspended plasmid at -20°C. The DNA is stable for at least one year from date of shipping when stored at -20°C.</li></ol>
RefSeq:	<a href="#">NM_133247.3</a> , <a href="#">NP_573510.2</a>
RefSeq Size:	4206 bp
RefSeq ORF:	2730 bp
Locus ID:	170822
UniProt ID:	<a href="#">Q8R5K2</a>
Cytogenetics:	3 H3

**Gene Summary:**

Deubiquitinating enzyme involved in various processes such as centrosome duplication, cellular migration and beta-2 adrenergic receptor/ADRB2 recycling. Involved in regulation of centrosome duplication by mediating deubiquitination of CCP110 in S and G2/M phase, leading to stabilize CCP110 during the period which centrioles duplicate and elongate. Involved in cell migration via its interaction with intracellular domain of ROBO1, leading to regulate the Slit signaling. Plays a role in commissural axon guidance cross the ventral midline of the neural tube in a Slit-dependent manner, possibly by mediating the deubiquitination of ROBO1. Acts as a regulator of G-protein coupled receptor (GPCR) signaling by mediating the deubiquitination of beta-arrestins (ARRB1 and ARRB2) and beta-2 adrenergic receptor (ADRB2). Plays a central role in ADRB2 recycling and resensitization after prolonged agonist stimulation by constitutively binding ADRB2, mediating deubiquitination of ADRB2 and inhibiting lysosomal trafficking of ADRB2. Upon dissociation, it is probably transferred to the translocated beta-arrestins, leading to beta-arrestins deubiquitination and disengagement from ADRB2. This suggests the existence of a dynamic exchange between the ADRB2 and beta-arrestins. Deubiquitinates DIO2, thereby regulating thyroid hormone regulation. Mediates deubiquitination of both 'Lys-48'- and 'Lys-63'-linked polyubiquitin chains. [UniProtKB/Swiss-Prot Function]

**Product images:**


Circular map for MG226445