

Product datasheet for **MG226438**

Recql (NM_023042) Mouse Tagged ORF Clone

Product data:

Product Type:	Expression Plasmids
Product Name:	Recql (NM_023042) Mouse Tagged ORF Clone
Tag:	TurboGFP
Symbol:	Recql
Synonyms:	RecQ1
Mammalian Cell Selection:	Neomycin
Vector:	pCMV6-AC-GFP (PS100010)
E. coli Selection:	Ampicillin (100 ug/mL)



[View online »](#)

ORF Nucleotide Sequence:

>MG226438 representing NM_023042
 Red=Cloning site Blue=ORF Green=Tags(s)

TTTTGTAATACGACTCACTATAGGGCGGCCGGGAATTCGTCGACTGGATCCGGTACCGAGGAGATCTGCC
 GCC**CGGATCGCC**

ATGGCATCCGCTCAGCTTTGACAGAGGAAGTGGAAATCCGTAGCCAGTGAGCTTTCATGCCATTGACATCC
 AGATTCAGGAACCTCACAGAGAGGCGCAAGAGCTCCTTCAGAGAAAGTCAGTCTGACAGGGAAAAATCAA
 ACAGTACTTGGAGGACTCTTCGGCTGAGGCGAGCAGCGACTTGGACACATCACCAGCTGCTTGAATAAA
 GAAGATTTTCCATGGTTCGAAAAGGTAAAAGATGTGCTGCAAAATGTTTTTAACTGCAAAAATTCAGAC
 CTCTGCAGCTGGAACCATCAATGTCACCATGGCTAGAAAGGATATCTTTCTTGCATGCCACAGGAGG
 AGGGAAGAGCTTATGCTACCAGCTACCTGCGCTGTGCTCAGACGGTTTTACACTTGTGATTTGCCACTC
 ATCTCTCTTATGGAAGATCAGCTGATGGTTTTAAACAGTTGGGAATTCAGCTACTATGTTGAATGCTT
 CCAGCTCTAAGGAACATGTAATAAGGTGCACGCTGAAATGGTGAATAAAAACTCCAGTTAAAGCTGAT
 TTATGTAACCTCAGAGAAAATTGCAAAAAGCAAGATGTTTCATGTCAAGACTGGAGAAAGCCTATGAAGCC
 GGGAGGCTGACGGGAGCGCAGTGGATGAAGTGCATTGCTGCAGTCAGTGGGGTCATGACTTCAGGCCTG
 ATTATAAGGCTCTTGGCATCTTGAAGCGCCAGTTTCCCAACGCCCTCACTGATGGGGCTGACTGCAACAGC
 AACCAACCATGTTCTGAAGGATGTACAGAAAATCCTGTGTGTGGGAAAAGTGTGACTTTTACAGCGTCT
 TTCAACCGGCCAAATCTTTTTATGAGGTTTCGGCAAAAAGCCCTCAAGTGTGAAGACTTTACTGAGGACA
 TTGTCAAGCTAATTAATGGACGGTACAAAGGACAATCAGGAATCATATACTGTTTCTCAGAAAGACTC
 TGAACAAATTACCATCAGTTTACAGAAGTTGGGAATTCATGCAGGCACTTACCATGCCAATATGGAACCA
 GAAGATAAGACCAAGGTTACACACAGTGGTCAAGCAATGAGCTTCAGGTGGTAGTGGCAACAGTCGCAT
 TTGGCATGGGAATTGATAAGCCAGACGTGAGGTTTGTCCATCCATCAATGAGCAAATCCATGGAGAA
 TTAATCAAGAGAGCGGCGTGCCTGCGGATGACTCGAGAGCAGACTGTATTCTGTATTACGGCTTT
 GGGGACATATTCAGGATCAGCTCGATGGTGGTATGGAGAACGTGGGGCAGCAGAAGCTGTATGAGATGG
 TGTCACTGCCAGAATGTGAGCAAGTGTGCGCGTGTGTTAATAGCACAGCATTTTATGAGAGTGTGGAA
 CGCAGATGCCTGTAAACAAAATGTGTGACAACTGCTGTAAGACGTTTCGTTTGGAGAAAAGAATGTGACA
 CAGCACTGCCGGACCTGATAAAGATTCTGAAGCAGGCTGAAGGCCTGAATGAAAAGCTGACCCCGCTGA
 AGCTGATTGATGCTTGGATGGGAAAGGAGCAGCAAGTTGAGAGTGGCTGGCGTGTGGCCCGGCCCT
 TCCCGGGGAAGACCTGGAGAGAATCGTCGCCACGCCCTCCTGCAGCAATATCTCAAAGAAGACTACAGC
 TTCACGGCTTACGCCACCATCTCTATCTGAAGGTGGGACCCAGAGCTTGTCTTCTCAGCAACGAAGCCC
 ATGCTGTCACTATGCAAGTGAAGAAGTCAGCACAGAGCAGCGTTAGGGGTGCACTGTCTGAAGCTCGTCA
 GGTGGAACAAGTGGATTGGAAGGGGAAGGCAAGCTCAGGTAACCTCCAGAAGTCTAAAAGCAGGCTT
 CAGCCATCTGGCTCTAAGAACGCAGGCGCTAAGAAAAGAAAACCTGATGATGCT

ACGCGTACGCGGCCGCTCGAG – GFP Tag – GTTTAA

Protein Sequence:

>MG226438 representing NM_023042
 Red=Cloning site Green=Tags(s)

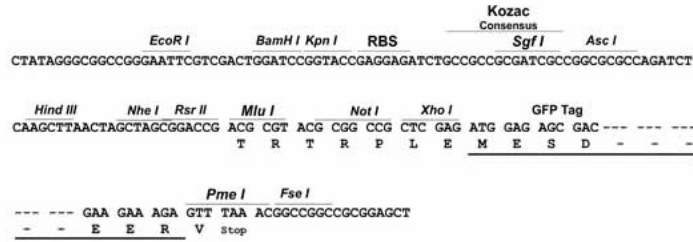
MASVSAL TEELESVASELHAIDIQIQEL TERRQELLQRKSVLTGKIKQYLEDSSAEASSDLTSPAAWNK
 EDFPWFVKVDVQLQNVFKLQKFRPLQLETINVTMARKDIFLVMPPTGGGKSLCYQLPALCSDGFTLVICPL
 ISLMEDQLMVLKQLGISATMLNASSSKEHVKWHVHAEMVNKNSQLKLIYVTPEKIAKSKMFSRLEKAYEA
 GRLTGAADVHCCSQWGHDFRPDYKALGILKRQFPNASLMGLTATATNHVLDKDVQKILCVGKCLTFTAS
 FNRPNLFYEVQRKPSAEDFTEDIVKLIINGRYKQSGI IYCF SQKDSEQITISLQKLG IHAGTYHANMEP
 EDKTKVHTQWSANELQVVVATVAFGMGIDKPDVRFVIHHSMSKSMENYQESGRAGRDDS RADCILYYGF
 GDIFRISSMVMENVGQKLYEMVSYCQNVSKRRVLI AQHFDE VWNADACNMCDNCKDVSFEKKNVT
 QHCRDLIKILKQAEGLNEKLTPLKLI DAWMGKAAKLRVAGVVAPALPREDLERIVAHALLQQYLKEDYS
 FTAYATISYLKVGPRACLLSNEAHAVTMQVKKSAQSSVRGALSEARQVEQVDSKGEEQSSGNSQKSKSRL
 QPSGSKNAGAKKRKLDDA

TRTRPLE – GFP Tag – V

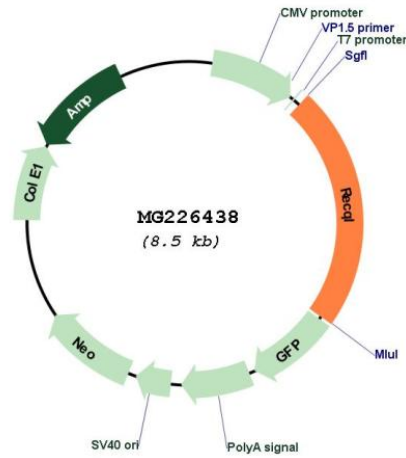
Restriction Sites: SgfI-MluI

Cloning Scheme:

Cloning sites used for ORF Shutting:



Plasmid Map:



ACCN: NM_023042

ORF Size: 1944 bp

OTI Disclaimer:	The molecular sequence of this clone aligns with the gene accession number as a point of reference only. However, individual transcript sequences of the same gene can differ through naturally occurring variations (e.g. polymorphisms), each with its own valid existence. This clone is substantially in agreement with the reference, but a complete review of all prevailing variants is recommended prior to use. More info
OTI Annotation:	This clone was engineered to express the complete ORF with an expression tag. Expression varies depending on the nature of the gene.
Components:	The ORF clone is ion-exchange column purified and shipped in a 2D barcoded Matrix tube containing 10ug of transfection-ready, dried plasmid DNA (reconstitute with 100 ul of water).
Reconstitution Method:	<ol style="list-style-type: none">1. Centrifuge at 5,000xg for 5min.2. Carefully open the tube and add 100ul of sterile water to dissolve the DNA.3. Close the tube and incubate for 10 minutes at room temperature.4. Briefly vortex the tube and then do a quick spin (less than 5000xg) to concentrate the liquid at the bottom.5. Store the suspended plasmid at -20°C. The DNA is stable for at least one year from date of shipping when stored at -20°C.
RefSeq:	NM_023042.3 , NP_075529.2
RefSeq Size:	3389 bp
RefSeq ORF:	1947 bp
Locus ID:	19691
UniProt ID:	Q9Z129
Cytogenetics:	6 73.91 cM
Gene Summary:	Isoform alpha is a DNA helicase that may play a role in the repair of DNA that is damaged by ultraviolet light or other mutagens. Isoform beta may have important roles in the meiotic process. Both isoforms exhibit a magnesium-dependent ATP-dependent DNA-helicase activity that unwinds single- and double-stranded DNA in a 3'-5' direction.[UniProtKB/Swiss-Prot Function]