

Product datasheet for **MG226432**

Usp40 (NM_001033291) Mouse Tagged ORF Clone

Product data:

Product Type:	Expression Plasmids
Product Name:	Usp40 (NM_001033291) Mouse Tagged ORF Clone
Tag:	TurboGFP
Symbol:	Usp40
Synonyms:	B230215L03Rik; C730029K03
Mammalian Cell Selection:	Neomycin
Vector:	pCMV6-AC-GFP (PS100010)
E. coli Selection:	Ampicillin (100 ug/mL)
ORF Nucleotide Sequence:	>MG226432 representing NM_001033291 Red=Cloning site Blue=ORF Green=Tags(s)

TTTTGTAATACGACTCACTATAGGGCGGCCGGAATTCGTCGACTGGATCCGGTACCGAGGAGATCTGCC
GCC**CGATCGCC**

ATGTTTGGGAACCTATTTGAAGAGGATTATCCAGTGTGTCAAGTAGTCAGTATGGAAGAGGGAAGAAAT
TAAAGACTAAAGTTTGGAGCCGCTGCCCTAGAGAATTCACCAATTTAAGTGAATCAGAAATCAGGG
TGGAACTGTTACCTCAGCTCCCTTCTTCAGACGCTTCATTTACACCTGAATTCAGAGAAGCTTTATTT
TCTCTTGGTCCGGAAGAGCTGGTTCTTTAGAGGATAAAGATAAACCTGATGCAAAGTTCCGGATCATA
CTTTGCAGTTGCAGCGCTTGTGGCCAGCTTCTGCTCTTGGACCAGGAGGCTGCATCTACCATAGACCT
CACCGACAGCTTCGGGTGGACCAACGATGAGGAAATGAGGCAACATGATGTGCAGGAACTCAACCGAAT
CTCTTCAGTGCTTTGAAACTTCTTTAGTTGGGACCTCTGGCCATGACCTCATTCACTCGTCTATACCATG
GCACCATTTGTGAACCAGATTGTTTCAAAGAGTGAAGAACATCAGTGAGAGGCAGGAAGACTTCTTGGA
TTTGACAGTAGCAGTCAAAAATGTATCTGGTTTGAAGATGAACTCTGCAACATGTATGTGGAGGAAGAA
ATTTTGGACTATGACAACCTGTACCACTGTGGAACCTGTGACCGACTGGTTAAAGCAGCAAAGTCTGCCA
AATTGCGTAAGCTGCCTCCTTTTCTTACTATTTCACTAAGATTTAATTTGATTTTGTGAAATGTGA
ACGCTACAAGGATACTAGCTGTTATACATTCCTCCGATCAATCTCAAGCCTTTCTGTGAACAGAGT
GAACTGGATGACATGGAATATATGTATGACCTCTTCCGTCATTATCCCAAAGGTGGCTGCTATGGAG
GTCATTACCATGTGTACATTAAGATGTTGATCATCTTGGCAACTGGCAATGTCAAGAGGAGATAAGTGA
TACAAATGTGAATGTGAAAGCTCCTCAGAGTGAAGAAGAGGCTAATGATCCATTGGTGGTTCTAAAAACA
ATCTTATTGCAGGAGGAGGCAATCAAATTCCTGTTGATCAACTGGCCAGAACTCTTGAAAAAACAG
GAATATCTTGAACAAGAAGTACAGGAAACAGCATGGACCACTGCGAAAGTTCTTACAGCTCCATCTCA
GATATTTCTGCTCAGCACAGATGAAAGTACAGTTAGTCTCCTGAGGAACCATCTTACCCAGGCCCATCT
GACCTACAGAGCTGTGAACAGATTCTACATACACTTGCTTCAAGATCCCCAGGCTTGAATGATGACACCA
GTTGCCACACTGGTTTATCAATGATTCCAAAGTCCATCCAATCAGAGAGAAAGATATCACACAGCA
GTTCCAGGTAAGAAAGTGCCTACATGCTGTTTTATCGGAAAGCCAGTTACAAAGGCCCTGAAAGCT



[View online »](#)

CGAGCCAATCCAAGATACAGAGTTCATGTCACTTGCTGAAGGAAATGGATGCAGCCAACATTCTACTGC
AGATGAGAAGGGCAGAATGTGACTCTGCAACAGTACTTTGAGTTGCATCTTCAATTTGGGTCCTCACTA
CCGTTTCTTCAATGGGGCTTTACCCTGCAGTCTCTGAGACAGAAAGCGTGTGGGACTTAACGTTTGAT
AAAAGAAAACTTTAGGAGATCTCCGTCAGTCAATATTTAGCTATTGGAATGTTGGGAAGGAGACATGG
TTCTTAGTGTGCGAAGCGTGTGCCAGCAGGACTTCATGTGTACCACACCCTCGATGGAGATGACTTGAC
ACTGTGTGAAGCTGAGGTTGCTGATGGGAAGACATCTTGTATGGAATGGGGTAGAGGTTGGTGGAGTC
CAAATTCAGACTGGTTTTGATTGTGAACCTCTGCTGTTAAACATTCTTCATCTAGAATAAGTGGTGAAG
GCTCAAAATGTGAGCAGTTGGTGGAGTCACCACATGTCTTTCCTGCTAATGCAGAAGTGGGCGCTGTGTT
CACAGCCTTGGGCACCCAGCAGGTGCCATCCTCATGAACAGTGTGGAGTCTGCAGATGGAGAGTCTGG
ACTGCTGTTCCCAAAGAAGACATGAAGAAGACGTTGAGAGAACAAGGTTCTCAGAAATGGAAGCTTAATTT
TGGTTCAAGATTCAGACAGTGATAATAACAGTCTGTTGCCCAAACAAGGGAGATGGACCAACAGCATGAA
TGAGCTCAACTGGCTCCAAGTAAAAATTTCTGCCAGTCAGAATCTGAAGAGAAGCAGGTTCCAGATAGCC
GTGACCATGCACACAGTGGTGTGATATTGCAATTAAGCCATAAAGGAATTAATTAATGAAGGAAC
TAGGAGAGATTTGGCACTTAAGGAAAATGGATTGGTGCTATGAAGCTGGTGAACCTTTATGTGAAGAGGA
TGCAACACTGAAAGAGCTTATGATACGTTCTGGGGATACTTTGCTTTAACTGAAGGGAAACTTCCTCCT
CCGGGTCACTTGAAGATGCCCATCTGGTGGTACCAGCCTGCAAGGCTGTCAGGACTGTGAGAGTCGGG
ACCACTTAAACTGTGCCTTTTCTCAAGATAGCACTGGAGGGCTGCTCCCAACCAAGGTGCTCCTGGCCC
CGAGCCTGCAGAAGTCTCTCCTCTACTTGGGGATATGGAGATCTCAGAAGAGGCCACATTGGTGAA
CTGAAGTCTCAGGCCTTGGCCTTGCTTCTGTTTGAAGCTCGCTGTCCAGTCCACAGCCCTGCTCAGAG
TCTGGACAGTGGAGAGCAAGCGCCCGCAGCAGACTCTTGCAGCACTAAGTGGCGGACAGTCAAGGAGTACAG
ACTGGGCCGGAGAGCAGAGCTCTGCCTAGAGCTCCTTCAAAAAGAGGAGGACTTGGGGCCCCGAGATGTA
CTGCTGAGGACACAGCTACGCATCCCTGGTGGAGAGCCTACTCCCTGGCGACAGACCTGATATGGGACA
CCACCAGAGGATGGACTGCTGGCTCCTTGGAGCAGAGAGTACTGACTTCTATTCTTCTCCTGTGGAGAA
AATTGAAATTGCCAAATATTTTCTGAAAAGTTTGGAGTGGCTTCCAATATCTAGCTGGAATCAGCAAGTT
GCCAAAAGAAAAAGAAGAAAAACCAAGATACTTTGCAAGGGGGACCATATTACTTGAAAGATGGAGACA
CTATTGGCATTAAAGAATCTCCTGTTTGATGACAAATGATGATTTTCCAGCACAATCAGAGATGACATTGAAA
GGAGAACCAGAAGCGGCTAGCTTTGAAAAAAAAGAAAAGCCGAGAAGTCCACCGTGCACAGAGCAGCGAT
TTGTTCTCCAATGCAGGGGTGCCCGCTAGGTTCCGGGGACCAGAAGCTTCTGTCCATCCACGTTGCAA
GCTTCAGA

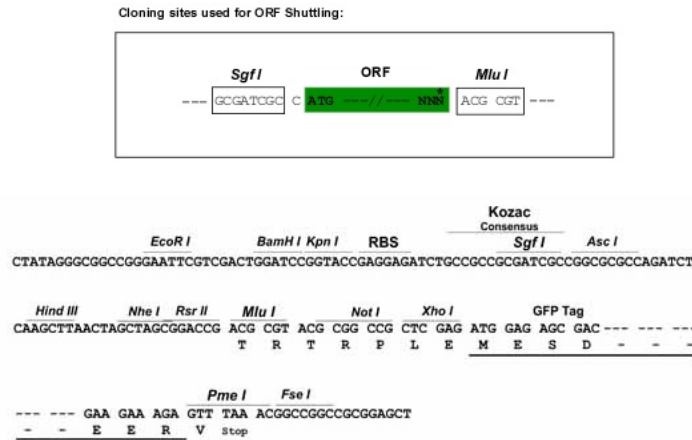
ACGCGTACGCGGCCGCTCGAG - GFP Tag - GTTTAA

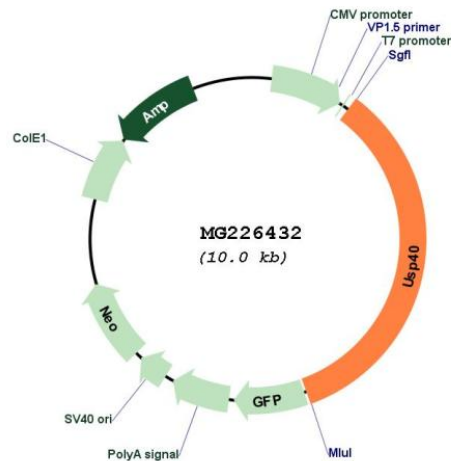
Protein Sequence: >MG226432 representing NM_001033291
 Red=Cloning site Green=Tags(s)

MFGNLFEEYSSVSSSQYGRGKLLKTKGLEPPAPREFTNLSGIRNQGGTCYLSLLQTLHFTPEFREALF
 SLGPEELGSLKDPDAKVRIIPLQLQLFAQLLLLDQEAASIDL TDSFGWTNDEEMRQHDVQELNRI
 LFSALETSLVGTSGHDLIHRLYHGTIVNQIVCKECKNISERQEDFLDLTVAVKNVSGLEDEL CNMYVEEE
 IFDYDNL YHCGTCDRLVKAASAKLRKLPFLTISLLRFNFDFVKCERYKDTSCYTFPLRINLKPFCES
 ELDDMEYMYDLFSV I IHKGGCYGGHYHYIKVDHDLGNWQCQEEISDTNVNVKAPQSEEEANDPLVVLKT
 ILLQEEANQIPVDQLGQKLLKKTGISWNKKYRKHGPLRKFLLHPQIFLLSTDESTVSLLRNHLTQAPS
 DLQSCEQILHTLASEPGLNDDTSCPHWFDINDSKVHPIREKDITQQFQKESAYMLFYRKATLQRPEEA
 RANPRYRVPCHLLKEMDAANILLQMRRAECDSANSTFELHLHLGPHYRFFNGALHPAVSETESVWDLTFD
 KRKTLGDLRQSIQFQLEECWEGDMVL SVAKRVPAGLHVYHTLDGDDLTLCEAEVADGEDIFVWNGVEVGGV
 QIQTGFDCEPLLLNHLHLEL SGEGSKCEQLVESPHVFPANA EVGAVFTALGTPAGAILMNSVESADGECW
 TAVPKEDMKKTFREQGLRNGSLILVQSDSDNNSLLPKQGRWTNSMNELNWLQVKNFCQSESEEKQVQIA
 VTMHTVVFDIRIKAIKELKLMKELGEIWHLRKMDWCYEAGEPLCEEDATLKELMIRSGDTLLLTEGKLP
 PHLKMP I WYQPARLSGHCESRDHLNCAF SQDSTWRAAPTQGAPGPEPAEVSLLYLGDMEISEEATLVE
 LKSQLALPSVSKLAVQSTALLRVWTVESKRPSRLLR TNWRQLKEYRLGRR AELCLELLQKEEDLGRPDV
 LLRTQLRIPGERAYSLATDLIWDTRGW TAGSLRQRVADFYSLPVEKIEIAKYFPEKFEWLPISWVQV
 AKRKKKNQDTLQGGPYLKDGDITIGIKNLLFDDNDDFSTIRDDIGKENQKRLALEKKKSREHVRAQSSD
 LFSNAGVPARFRGPEASLSIHVASFR

TRTRPLE - GFP Tag - V

Restriction Sites: SgfI-MluI
 Cloning Scheme:



Plasmid Map:


ACCN: NM_001033291

ORF Size: 3438 bp

OTI Disclaimer: The molecular sequence of this clone aligns with the gene accession number as a point of reference only. However, individual transcript sequences of the same gene can differ through naturally occurring variations (e.g. polymorphisms), each with its own valid existence. This clone is substantially in agreement with the reference, but a complete review of all prevailing variants is recommended prior to use. [More info](#)

OTI Annotation: This clone was engineered to express the complete ORF with an expression tag. Expression varies depending on the nature of the gene.

Components: The ORF clone is ion-exchange column purified and shipped in a 2D barcoded Matrix tube containing 10ug of transfection-ready, dried plasmid DNA (reconstitute with 100 ul of water).

Reconstitution Method:

1. Centrifuge at 5,000xg for 5min.
2. Carefully open the tube and add 100ul of sterile water to dissolve the DNA.
3. Close the tube and incubate for 10 minutes at room temperature.
4. Briefly vortex the tube and then do a quick spin (less than 5000xg) to concentrate the liquid at the bottom.
5. Store the suspended plasmid at -20°C. The DNA is stable for at least one year from date of shipping when stored at -20°C.

RefSeq: [NM_001033291.2](#), [NP_001028463.1](#)

RefSeq Size: 5049 bp

RefSeq ORF: 3441 bp

Locus ID: 227334

UniProt ID: [Q8BWR4](#)

Cytogenetics: 1 D