

Product datasheet for **MG226376**

Il15ra (NM_008358) Mouse Tagged ORF Clone

Product data:

Product Type: Expression Plasmids
Product Name: Il15ra (NM_008358) Mouse Tagged ORF Clone
Tag: TurboGFP
Symbol: Il15ra
Synonyms: AA690181; IL-15RA
Mammalian Cell Selection: Neomycin
Vector: pCMV6-AC-GFP (PS100010)
E. coli Selection: Ampicillin (100 ug/mL)
ORF Nucleotide Sequence: >MG226376 representing NM_008358
Red=Cloning site Blue=ORF Green=Tags(s)

TTTTGTAATACGACTCACTATAGGGCGGCCGGAATTCGTCGACTGGATCCGGTACCGAGGAGATCTGCC
GCC**CGATCGCC**

ATGGCCTCGCCGAGCTCCGGGGCTATGGAGTCCAGGCCATTCTGTGTTGCTGCTGCTGCTGTTGCTAC
TGTTGCTCCCGCTGAGGGTGACGCCGGGCACCACGTGTCCACCTCCCGTATCTATTGAGCATGCTGACAT
CCGGGTCAAGAATTACAGTGTGAACTCCAGGGAGAGGTATGTCTGTAACCTGGCTTTAAGCGGAAAGCT
GGAACATCCACCCTGATTGAGTGTGTGATCAACAAGAACAATAATGTTGCCACTGGACAACCTCCAGCC
TCAAGTGCATCAGAGACCCCTCCCTAGCTCACTACAGTCCAGTGCCAACAGTAGTGACACCAAAGGTGAC
CTCACAGCCAGAGAGCCCTCCCCCTCTGCAAAAAGAGCCAGAAGCTTTCTCTCCCAAATCAGATACCGCA
ATGACCACAGAGACAGCTATTATGCCTGGCTCCAGGCTGACACCATCCCAACAACCTTCTGCAGGAACTA
CAGGGACAGGCAGTCACAAGTCCTCCCGAGCCCATCTCTTGACGCAACAATGACCTTGGAGCCTACAGC
CTCCACCTCCCTCAGGATAACAGAGATTCTCCCCACAGTTCCAAAATGACGAAAGTGGCCATCTCTACA
TCGGTCTCTTGGTTGGTGCAGGGGTTGTATGGCTTTCTGGCCTGGTACATCAAATCAAGGCAGCCTT
CTCAGCCGTGCCGTGTTGAGGTGAAACCATGAAACAGTACCAATGACTGTGAGGGCCAGCAGCAAGGA
GGATGAAGACACAGGAGCC

ACGCGTACGCGGCCGCTCGAG - GFP Tag - GTTTAA



[View online »](#)

Protein Sequence: >MG226376 representing NM_008358
Red=Cloning site Green=Tags(s)

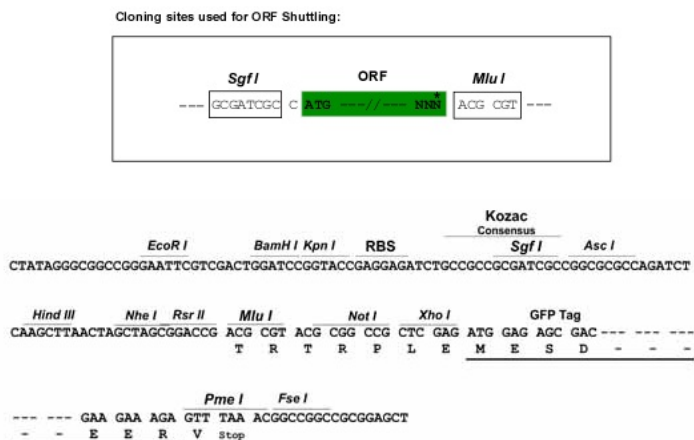
MASPQLRGYGVQAIPVLLLLLLLLLLLLPLRVTPGTTCPPPVVSIHADIRVKNYSVNSRERYVCNSGFKRKA
 GTSTLIECVINKNTNVAHWTTPSLKCIRDPSLAHYSVPVTVVTPKVTSQPESPSAKEPEAFSPKSDTA
 MTTETAIMPGRSLTPSQTTTSAGTTGTGSHKSSRAPSLAATMTLEPTASTSLRITEISPHSSKMTKVAIST
 SVLLLVGAGVMAFLAWYIKSRQPSQPCRVETMETVPMTVRASSKEDEDTGA

TRTRPLE - GFP Tag - V

Chromatograms: https://cdn.origene.com/chromatograms/ja1651_a10.zip

Restriction Sites: SgfI-MluI

Cloning Scheme:



ACCN: NM_008358

ORF Size: 789 bp

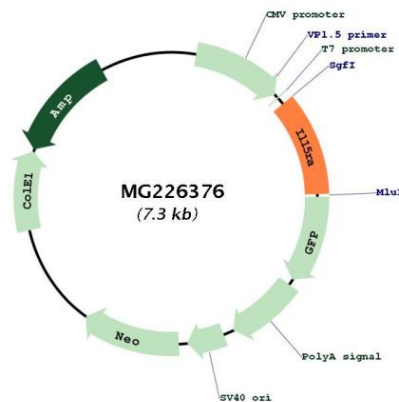
OTI Disclaimer: Due to the inherent nature of this plasmid, standard methods to replicate additional amounts of DNA in E. coli are highly likely to result in mutations and/or rearrangements. Therefore, OriGene does not guarantee the capability to replicate this plasmid DNA. Additional amounts of DNA can be purchased from OriGene with batch-specific, full-sequence verification at a reduced cost. Please contact our customer care team at custsupport@origene.com or by calling 301.340.3188 option 3 for pricing and delivery.

The molecular sequence of this clone aligns with the gene accession number as a point of reference only. However, individual transcript sequences of the same gene can differ through naturally occurring variations (e.g. polymorphisms), each with its own valid existence. This clone is substantially in agreement with the reference, but a complete review of all prevailing variants is recommended prior to use. [More info](#)

OTI Annotation: This clone was engineered to express the complete ORF with an expression tag. Expression varies depending on the nature of the gene.

Components:	The ORF clone is ion-exchange column purified and shipped in a 2D barcoded Matrix tube containing 10ug of transfection-ready, dried plasmid DNA (reconstitute with 100 ul of water).
Reconstitution Method:	<ol style="list-style-type: none"> 1. Centrifuge at 5,000xg for 5min. 2. Carefully open the tube and add 100ul of sterile water to dissolve the DNA. 3. Close the tube and incubate for 10 minutes at room temperature. 4. Briefly vortex the tube and then do a quick spin (less than 5000xg) to concentrate the liquid at the bottom. 5. Store the suspended plasmid at -20°C. The DNA is stable for at least one year from date of shipping when stored at -20°C.
RefSeq:	<u>NM_008358.2</u>
RefSeq Size:	792 bp
RefSeq ORF:	792 bp
Locus ID:	16169
UniProt ID:	<u>Q60819</u>
Cytogenetics:	2 8.97 cM
Gene Summary:	High-affinity receptor for interleukin-15 (PubMed:17947230). Can signal both in cis and trans where IL15R from one subset of cells presents IL15 to neighboring IL2RG-expressing cells (PubMed:17947230). In neutrophils, binds and activates kinase SYK in response to IL15 stimulation (By similarity). In neutrophils, required for IL15-induced phagocytosis in a SYK-dependent manner (By similarity).[UniProtKB/Swiss-Prot Function]

Product images:



Circular map for MG226376