

Product datasheet for **MG226374**

Twist2 (NM_007855) Mouse Tagged ORF Clone

Product data:

Product Type: Expression Plasmids
Product Name: Twist2 (NM_007855) Mouse Tagged ORF Clone
Tag: TurboGFP
Symbol: Twist2
Synonyms: bHLHa39; Dermo1
Mammalian Cell Selection: Neomycin
Vector: pCMV6-AC-GFP (PS100010)
E. coli Selection: Ampicillin (100 ug/mL)
ORF Nucleotide Sequence: >MG226374 representing NM_007855
Red=Cloning site Blue=ORF Green=Tags(s)

TTTTGTAATACGACTCACTATAGGGCGGCCGGAATTCGTCGACTGGATCCGGTACCGAGGAGATCTGCC
GCC**CGATCGCC**

ATGGAGGAGGGCTCCAGCTCGCCGGTGTCCCCGTGGACAGTCTGGGCACCAGTGAGGAAGAGCTGGAGA
GGCAGCCCAAGCGCTTCGGCCGGAAGCGGCGCTACAGCAAGAAATCGAGCGAAGATGGCAGCCCGACCCC
GGGTAAGCGCGGCAAGAAGGGCAGCCCGAGCGCGCAGTCTTCGAGGAGCTGCAGAGCCAGCGCATCCTG
GCCAACGTGCGGAGCGCCAGCGCACCCAGTCGCTCAACGAGGCCTTCGCCGCGCTGCGCAAGATCATCC
CCACGCTCCCCTCTGACAAGCTCAGCAAGATCCAGACGCTCAAGCTGGCCGCCAGGTACATAGACTTCCT
CTACCAGTTCTCCAGAGCGACGAGATGGACAATAAGATGACCAGCTGCAGCTACGTGGCTCAGGCGT
CTCAGTACGCCTTCTCCGTGTGGCGCATGGAGGGCGCGTGGTCCATGTCCGCCTCCCAC

ACGCGTACGCGGCCGCTCGAG - GFP Tag - GTTTAA

Protein Sequence: >MG226374 representing NM_007855
Red=Cloning site Green=Tags(s)

MEEGSSSPVSPVDSLGTSEEELERQPKRFGRKRRYSKKSSDGSPTPGKRGKKGSPSAQSFEELQSQRIL
ANVRERQRTQSLNEAFAALRKIIPTLPDKLSKIQLKLAARYIDFLYQVLQSDMDNKMNTSCSYVAHER
LSYAFSVWRMEGAWSMSASH

TRTRPLE - GFP Tag - V

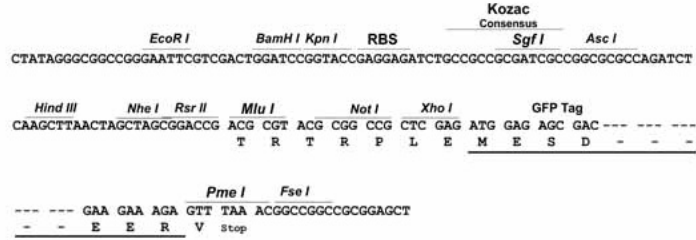
Restriction Sites: SgfI-MluI



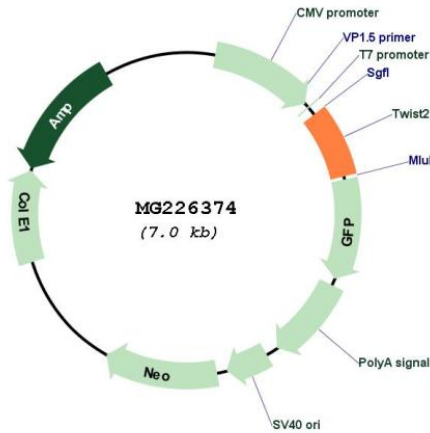
[View online »](#)

Cloning Scheme:

Cloning sites used for ORF Shutting:



Plasmid Map:



ACCN: NM_007855
 ORF Size: 480 bp

OTI Disclaimer:	<p>Due to the inherent nature of this plasmid, standard methods to replicate additional amounts of DNA in E. coli are highly likely to result in mutations and/or rearrangements. Therefore, OriGene does not guarantee the capability to replicate this plasmid DNA. Additional amounts of DNA can be purchased from OriGene with batch-specific, full-sequence verification at a reduced cost. Please contact our customer care team at custsupport@origene.com or by calling 301.340.3188 option 3 for pricing and delivery.</p> <p>The molecular sequence of this clone aligns with the gene accession number as a point of reference only. However, individual transcript sequences of the same gene can differ through naturally occurring variations (e.g. polymorphisms), each with its own valid existence. This clone is substantially in agreement with the reference, but a complete review of all prevailing variants is recommended prior to use. More info</p>
OTI Annotation:	This clone was engineered to express the complete ORF with an expression tag. Expression varies depending on the nature of the gene.
Components:	The ORF clone is ion-exchange column purified and shipped in a 2D barcoded Matrix tube containing 10ug of transfection-ready, dried plasmid DNA (reconstitute with 100 ul of water).
Reconstitution Method:	<ol style="list-style-type: none"> 1. Centrifuge at 5,000xg for 5min. 2. Carefully open the tube and add 100ul of sterile water to dissolve the DNA. 3. Close the tube and incubate for 10 minutes at room temperature. 4. Briefly vortex the tube and then do a quick spin (less than 5000xg) to concentrate the liquid at the bottom. 5. Store the suspended plasmid at -20°C. The DNA is stable for at least one year from date of shipping when stored at -20°C.
RefSeq:	NM_007855.3 , NP_031881.1
RefSeq Size:	1312 bp
RefSeq ORF:	483 bp
Locus ID:	13345
UniProt ID:	Q9D030
Cytogenetics:	1 D
Gene Summary:	Binds to the E-box consensus sequence 5'-CANNTG-3' as a heterodimer and inhibits transcriptional activation by MYOD1, MYOG, MEF2A and MEF2C. Also represses expression of proinflammatory cytokines such as TNFA and IL1B. Involved in postnatal glycogen storage and energy metabolism. Inhibits the premature or ectopic differentiation of preosteoblast cells during osteogenesis, possibly by changing the internal signal transduction response of osteoblasts to external growth factors (By similarity).[UniProtKB/Swiss-Prot Function]