

Product datasheet for **MG226365**

Kcnma1 (NM_010610) Mouse Tagged ORF Clone

Product data:

Product Type:	Expression Plasmids
Product Name:	Kcnma1 (NM_010610) Mouse Tagged ORF Clone
Tag:	TurboGFP
Symbol:	Kcnma1
Synonyms:	5730414M22Rik; BKCa; MaxiK; mSlo; mSlo1; Slo; Slo1
Mammalian Cell Selection:	Neomycin
Vector:	pCMV6-AC-GFP (PS100010)
E. coli Selection:	Ampicillin (100 ug/mL)
ORF Nucleotide Sequence:	>MG226365 representing NM_010610 Red=Cloning site Blue=ORF Green=Tags(s)

TTTTGTAATACGACTCACTATAGGGCGGCCGGAATTCGTCGACTGGATCCGGTACCGAGGAGATCTGCC
 GCCCGGATCGCC

ATGGCAAACGGTGGCGGGCGGGCGGGCAGCAGCGGGCGGGCGGGCGGGCGGGCGGGAGGCAGCGGTC
 TTAGAATGAGCAGCAATATCCACGCGAACCATCTCAGCCTAGACGCGTCTCCTCCTCCTCTTCTCCTC
 CTCTTCTTCTTCTCCTCCTCCTTCTCCTCGTCCAGGAGCCCAAGATGGATGCGCTCATC
 ATACCGGTGACCATGGAGGTGCCGTGCGACAGCCGGGGCCAACGCATGTGGTGGGCTTCTTGGCCTCCT
 CCATGGTGACTTCTTGGGGGCTCCTCATCATCTTGTCTGGCGGACGCTCAAGTACCTGTGGACCGT
 TTGCTGCCACTGCGGGGCAAGACGAAGGAGGCCAGAAGATAAAACAATGGCTCCAGCCAGCAGATGGT
 ACTCTCAAGCCAGTGGACGAAAAAGAGGAGGTGGTGGCAGCCGAGGTCCGCTGGATGACATCTGTGAAGG
 ACTGGGCAGGGGTGATGATATCCGCCAGACACTGACTGGCAGAGTCTGGTTGTGTTAGCTTTTGTCTCT
 CAGCATTGGTGCCCTCGTAATATACTTCATAGACTCGTCAAACCAATAGAATCCTGCCAGAATTTCTAC
 AAAGATTTACATTACAGATCGACATGGCTTCAACGTGTCTTCTCCTCTACTTTGGCTTGCGGTTTA
 TTGCAGCCAACGATAAGCTGTGGTCTGGCTGGAAGTGAATTGATAGTATTTTCAAGAGCTCTCAGACTGATA
 CAGTTTTTCAGAGATTTTGCAGTTTCTGAATATCCTTAAACAAGTAACTCCATCAAGCTGGTGAATCTGC
 TCTCCATATTTATCAGCAGTGGCTGACTGCAGCTGGATTTCATCCAATGGTGGAGAATTCAGGGGACCC
 ATGGGAAAATTTCCAAAACAACCAAGGCACTTACGTACTGGGAATGTGTCTACTTACTCATGGTCACAATG
 TCTACAGTGGGTTATGGGACGTTTATGCAAAAACCAACTTGGAGCCTCTTATGGTCTTCTTATCC
 TCGGGGACTGGCCATGTTTCCAGCTACGTCCCTGAAATCATAGAGTTAATAGGAAACCGCAAGAAATA
 CGGGGGCTCCTATAGCGCGTGTAGTGGAAAGAAAGCACATTGTAGTCTGTGGACACATTACTCTGGAGAGT
 GTCTTAACTTCCTGAAGGACTTCTGCACAAGGACCGGGATGATGTCAACGTGGAGATTGCTTTCTCTC
 ACAACATCTCCCTAACCTTGAGCTTGAGGCTCTGTTCAAACGGCATTTCACTCAGTGGAGTTTATCA
 GGGCTCTGCTCAATCCACATGATCTTGCCAGAGTCAAGATAGAGTCAGCAGATGCATGCCTGATCCT



View online »

GCCAATAAGTATTGCGCTGACCCGGATGCAGAAGATGCCTCCAACATCATGAGAGTGATCTCCATCAAAA
ACTACCACCCAAAGATCAGGATCATCACTCAGATGCTGCAGTATCACAACAAGGCCCATCTGCTCAACAT
CCCCAGCTGGAAGTGGAAAGAGGGTGTGACGCAATATGCCTTGACAGAGCTCAAGTTGGGTTTCATAGCC
CAGAGCTGTCTGGCTCAAGGCCTCTCCACAATGCTTGCCAATCTTTCTCTATGAGGTCAATCATAAAGA
TTGAGGAAGACACATGGCAGAAATACTACTTGGAAAGAGTCTCCAATGAAATGTACACAGAATATCTCTC
CAGTGCCTTCGTGGTCTGTCTCCCTACTGTTTGTGAGCTGTGTTTTGTGAAGCTTAAGTCCCTGATG
ATAGCCATTGAGTACAAGTCTGCCAACAGAGAGAGCCGAATATTAATTAACCCTGGGAACCACCTTAAGA
TCCAAGAAGGTACTTTAGGATTTTTATCGCAAGTGATGCCAAAGAAGTTAAAAGGGCATTTTTTACTG
CAAGGCCTGTCATGATGACGTACAGATCCCAAAAGAATTAATAAATGTGGCTGCAGGCGGCCCAAGATG
TCCATCTACAAGAGAATGAGACGAGCATGTTGTTTTGATTGCGGACGTTCTGAGCGTGACTGCTCGTGCA
TGTGAGCCGTGTGCGTGGTAACTGGACACCCTTGAGAGAACCCTCCCGCTTTCTTCTGTCTGTGTTAA
TGATTGCTCCACCAGTTCCGTGCCTTTGAAGATGAGCAGCCCAACCCTGTCACCAAAAAAAAAAACA
CGTAATGGGGCATGAGGAACCTCGCCAACACCTCCCGAAGCTGATGAGGCATGACCCCTGTGTTAATTC
CTGGCAATGATCAGATTGACAACATGGACTCCAATGTAAAAAGTACGACTCCACTGGAATGTTTACTG
GTGTGCACCCAAGGAGATTGAGAAAGTCATCTTACTCGAAGTGAAGCTGCCATGACTGTCTGAGTGGC
CATGTCTGATGTCATCTTTGGGGATGTCAGCTCAGCCCTGATTGGCCTCCGGAACCTGGTGTATGCCAC
TTCGTGCTAGCAACTTCACTATCATGAGCTCAAACACATTGTGTTTTGGGGCTCCATTGAGTACCTCAA
GAGGGAGTGGGAAACTGCACAACCTCCCGAAAGTGTCCATATTGCCTGGTACACCATTAAAGTCGGGCT
GATTTAAGGGCTGTCAACATCAACCTCTGTGACATGTGCGTTATCCTGTGAGCCAATCAGAATAATTTG
ATGATACTTCGCTTCAGGACAAGGAATGCATCTTGGCGTCACTCAACATCAAATCTATGCAGTTTGTGTA
CAGCATCGGGTCTTGCAGGTAATCCCAAGGATTCACACCTCCTGGAATGGACAGATCATCACCCGAC
AACAGCCAGTGCACGGGATGTTACGCCAGCCGTCCATCAAACTGGGGTCAACATTCATCATCACGG
AACTCGTGAATGATACCAATGTTTCAAGTTTTGGACCAAGACGATGACGATGACCCCTGACACAGAGCTGA
CCTCACACAGCCCTTGTGTTGTGGGACAGCATTTGCCGTGAGCGTCTGGACTCACTCATGAGCGGACA
TACTTCAATGACAATATCCTCACCTAATACGGACCCTGGTACAGGAGGAGCCACACCAGAGCTCGAGG
CTCTAATAGTGAGGAGAATGCACCTTCGAGGAGGCTACAGCACTCCGCAGACATTGGCCAACAGGGACCG
TTGCCGAGTGGCCAGTTAGCCCTGTTAGATGGTCCCTTGCAGACTTAGGGGATGGTGGTTGTTATGGT
GATCTGTTCTGCAAAGCTCTGAAAACATATAATATGCTTTGTTTTGGAATTTACCGGCTGAGAGATGCC
ACCTCAGCACCCAGCCAGTGTACAAAAGGTACGTATCACCATCCTCCCTACGAGTTTGTGAGCTCGT
ACCAACAGACCTGATCTTCTGCCTGATGCAGTTTGACCACAACGCTGGCCAATCCCGGGCCAGTCTGTCT
CATTCTCCCACTCCTCACAGTCGTCCAGTAAGAAGAGCTCCTCCGTCCACTCCATCCCGTCCACAGCAA
ATCGGCCGAACCGGCCAAGTCCAGGGAGTCCCGGACAAACAGAACAGAAAAGAATGGTTTACAGA

AGCGGACCGACGCGTACGCGGCCGCTCGAG - GFP Tag - GTTTAA

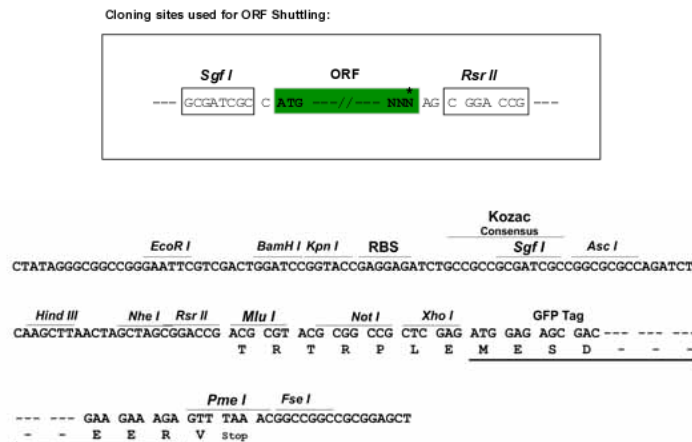
Protein Sequence: >MG226365 representing NM_010610
 Red=Cloning site Green=Tags(s)

MANGGGGGGGSSGGGGGGGGSGLRMSSNIHANHLSLDASSSSSSSSSSSSSSSSSSSSSVHEPKMDALI
 IPVTMEVPCDSRQRMWAWFLASSMVTFFGGFLIILLWRTLKYLWTVCCCHGGKTKAQKINNGSSQADG
 TLKPVDEKEEVAAEVGWMTSVKDWAGVMISAQTLTGRVLLVLFALSIGALVIYFIDSSNPIESCQNFY
 KDFTLQIDMAFNVFLLYFGLRFIAANDKLWFLEVNSVVDFFTVPPVFSVYLNRSWLGLRFLRALRLI
 QFSEILQFLNILKTSNSIKLVNLLSIFISTWLTAAAGFIHLVENSQDPWENFQNNQALTYWECVYLLMVTM
 STVGYGDVYAKTTLGRLFMVFFILGGLAMFASYVPEIIEILIGNRKKYGGSSYSAVSGRKHIVVCGHITLES
 VSNFLKDFLHKDRDDVNVEIVFLHNI SPNLELEALFKRHFTQVEFYQGSVLNPHDLARVKIESADAACLIL
 ANKYCADPDAEDASNIMRVISIKNYHPKIRIITQMLQYHNKAHLLNIPSWNKEGDDAICLAELKLGFA
 QSCLAQGLSTMLANLFSMRSFIKIEEDTWQKYYLEGVSNEMYTEYLSAFVGLSFPTVCELFCVVKLLLM
 IAIEYKSANRESRILINPGNHLKIQEGTLGFFIASDAKEVKRAFFYCKACHDDVTPKRIKKGCRPPKM
 SIYKMRMRACCFDCGRSERDCSCMSGRVGRNVDTLERTFPLSSVSNDCSTSFRAFEDEQPPTLSPKKKQ
 RNGGMRNSPNTSPKLMRHDPLLIPGNDQIDNMDSNVKKYDSTGMFHWCAPKEIEKVILTRSEAAMTVLSG
 HVVVCIFGDVSSALIGLRNLVMPLRASNFHYHELKHIVFVGSIEYLKREWETLHNFPKVSIPLPGTPLSRA
 DLRAVNINLDCMCVILSANQNNIDDTSLQDKECILASLNIKSMQFDDSIGVLQANSQGFTPPGMDRSSPD
 NSPVHGLMRQPSITTVNIPITTELVDNTNVQFLDQDDDDDPDELYLTQPFACGTAFVSVLDSLMSAT
 YFNDNILTLIRTLVTGGATPELEALIAEENALRGGYSTPQTLANRDRCRVAQLALLDGPFDLGDGGCYG
 DLFCKALKTYNMLCFGIYRLRDAHLSTPSQCTKRYVITNPPYEFELVPTDLIFCLMQFDHNAGQSRASLS
 HSSHSSQSSKSSSVHSIPSTANRPNRPKSRESRDKQNRKEMVYR

SGPTRRRLE - GFP Tag - V

Restriction Sites: SgfI-RsrII

Cloning Scheme:

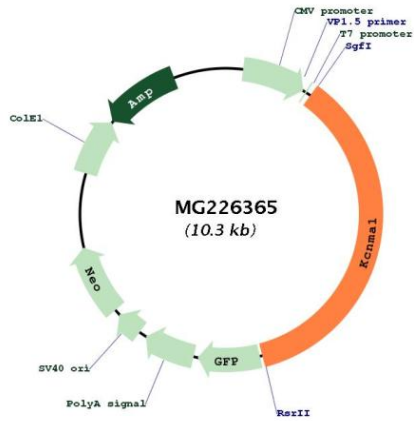


ACCN: NM_010610

ORF Size: 3708 bp

OTI Disclaimer:	The molecular sequence of this clone aligns with the gene accession number as a point of reference only. However, individual transcript sequences of the same gene can differ through naturally occurring variations (e.g. polymorphisms), each with its own valid existence. This clone is substantially in agreement with the reference, but a complete review of all prevailing variants is recommended prior to use. More info
OTI Annotation:	This clone was engineered to express the complete ORF with an expression tag. Expression varies depending on the nature of the gene.
Components:	The ORF clone is ion-exchange column purified and shipped in a 2D barcoded Matrix tube containing 10ug of transfection-ready, dried plasmid DNA (reconstitute with 100 ul of water).
Reconstitution Method:	<ol style="list-style-type: none">1. Centrifuge at 5,000xg for 5min.2. Carefully open the tube and add 100ul of sterile water to dissolve the DNA.3. Close the tube and incubate for 10 minutes at room temperature.4. Briefly vortex the tube and then do a quick spin (less than 5000xg) to concentrate the liquid at the bottom.5. Store the suspended plasmid at -20°C. The DNA is stable for at least one year from date of shipping when stored at -20°C.
RefSeq:	NM_010610.3 , NP_034740.2
RefSeq Size:	5051 bp
RefSeq ORF:	3711 bp
Locus ID:	16531
UniProt ID:	Q08460
Cytogenetics:	14 A3
Gene Summary:	Potassium channel activated by both membrane depolarization or increase in cytosolic Ca(2+) that mediates export of K(+). It is also activated by the concentration of cytosolic Mg(2+). Its activation dampens the excitatory events that elevate the cytosolic Ca(2+) concentration and/or depolarize the cell membrane. It therefore contributes to repolarization of the membrane potential. Plays a key role in controlling excitability in a number of systems, such as regulation of the contraction of smooth muscle, the tuning of hair cells in the cochlea, regulation of transmitter release, and innate immunity. In smooth muscles, its activation by high level of Ca(2+), caused by ryanodine receptors in the sarcoplasmic reticulum, regulates the membrane potential. In cochlea cells, its number and kinetic properties partly determine the characteristic frequency of each hair cell and thereby helps to establish a tonotopic map. Kinetics of KCNMA1 channels are determined by alternative splicing, phosphorylation status and its combination with modulating beta subunits. Highly sensitive to both iberiotoxin (IbTx) and charybdotoxin (CTX).[UniProtKB/Swiss-Prot Function]

Product images:



Circular map for MG226365