

Product datasheet for **MG226359**

Plxnc1 (NM_018797) Mouse Tagged ORF Clone

Product data:

Product Type: Expression Plasmids
Product Name: Plxnc1 (NM_018797) Mouse Tagged ORF Clone
Tag: TurboGFP
Symbol: Plxnc1
Synonyms: 2510048K12Rik; AW742158; CD232; Vespr
Mammalian Cell Selection: Neomycin
Vector: pCMV6-AC-GFP (PS100010)
E. coli Selection: Ampicillin (100 ug/mL)
ORF Nucleotide Sequence: >MG226359 representing NM_018797
 Red=Cloning site Blue=ORF Green=Tags(s)

TTTTGTAATACGACTCACTATAGGGCGGCCGGAATTCGTCGACTGGATCCGGTACCGAGGAGATCTGCC
 GCC**CGATCGCC**

ATGGAGGTCTCCCGAGGAAGACGCCGCCGCCCGTACCCCGCCGACCGTTGCCCTGATCGCCT
 ATCTGCTGGCGCTGGCAGCGCCCGGGGGCGCGGACGAGCCGGTGTGGCGATCTGAGCAAGCCATCGG
 AGCCATCGCGCGAGCCGGGGCGGACGGCGTGTTCGTGGCGAGCGGACGCTGCCTGGACCAGCTGGACTAC
 AGCCTGAAGAACAGGCTCTCTCGCCTATACCGGGACCAAGCGGGCAACTGCACGGAGCCCGTCTCGTTGG
 CGCCCCCGCGCGCCCGGCCCGGGAGCAGCTTCAGCAAGCTACTGCTGCCCTACCGCGAGGGGGCGAC
 CGGCTCGAGGGGCTGTGCTCACCGGCTGGACCTTCGACCGGGGCGCCTGCGAGGTGCGGCCCTGGGC
 AACCTGAACCGCAGCTCCCTGCGCAACGGCACCAGGTGGTGTATGTCACCCGAGGGTTCGACGGCTG
 GTGTGGTGTACCGCGCAGTGGCACCGACCTCTGGTACCTGGCGGTGGCCGCCACCTATGTGCTGCCGGA
 GCCGGAGACCGGAACCGCTGCAACCCCGCAGCATCCGATCGCGACACGGCTATCGCGCTCAAGAACACG
 GAGGGGCGCAGTCTGGCCACGCAGGAGCTGGGCCGCTGAAACTGCGCGGTAGTGGCGGCAGCCTGCACT
 TCGTGGACGCCTTCTCTGGAACGGCAGTGTCTACTTCCCCTACTATCCCTACAACACTACACGAGTGGCGC
 TGCCACCGGCTGGCCAGCATGGCGGCATCGCGCAGAGCACAGAGGTGCTGTCCAGGGCCAGGCTGCC
 CTCGACTGCGACCACGGCCACCCTGAGGGCCCGCCTACTGCTTCTCCAGCCTGGTGGAGGCTGTGG
 ACATCTGGGCCCGCGTGTTCAGCGCGGCACTGGAGAGGGCCAGGAGAGGCGCTCCCCCGCCACCGGC
 TCTCTGCCTTTCAAGGATGAGTGAGATCCAGGCGCACGCCAGGAGCTGCAGCTGGGACTTTCAAGCGACT
 GAGCACAACCTGCAAGAAGGGGATCGGCCTGAACGGGTCCAGCCAATTGCATCGTCTACACTGATCCACT
 CTGACCTGACGTCTGTTTATGGCACCGTGGTATGAACAGGACTGTTCTGTTCTTGGGGACCGGAGATGG
 CCAGTTACTGAAGTTGTTCTTGGTGAGAATTTGACTTCAAACCTGTCCAGAGGTTATTTATGAAATTA
 GAAGAAACGCCTGTGTTCTACAAGCTCGTTCCTCATCCCATGAAGAACATCTACATCTACCTAACAGCTG
 GGAAGGAGGTGAGAAGAATTCCTGTTGCAAACCTGCAGTAAACGGAAATCCTGTTCCAGAGTCTTAGCAGC
 GGCAGACCCCACTGTGGCTGGTGCCTCCCGTTACAAAGGTGCACCTTTCAAGGGGATTGCACACATGCT



GGGAGCTTTGAAAACGGCTGGATATTTTCATCAGGACCTAAAAATGCCGAAAATTCAGATACTTCGAA
 GCCTCCGAGAGAGAACCACAGTGACCATTGTGGGAAGCATCTCCGCAAGACACTCGGAGTGCCTGGTAA
 GAACGCAGACACGGGCAAGCTGCTGCGCAGGGGAGAAGCCAACCTGAACTGGACCTGTGCCTGCAATATC
 CCCAGCAGACCCAGCTATAATGTCTTAGTTGTCAATGCGACCTTCTCCTTTCCGCTTTGGAACCTTATCAG
 AAAGATCAACTTCACCAACTGTGCGTCATTAAGAAATGCCCGCGTGTATCAGAAGCGGCTGTGCTTG
 GTGTAACGGGACAAGAAATGCATCCACCCCTCACCCCTGCGAACCATCAGACTATGAGAGGAATCAG
 GAGCTCTGTCAAGTTGCTGTGGAGAAGTCGCCAAGGACTCAGGAGGAGGAAGAGTCAAGGAGACAAAGA
 GAAACAGAACTGACGGGGCTGTGCAAGTCTTCTACATTAAAGCCATTGAGCCACAAAAAATCAACCTT
 AGGAAAAAGCAATGTGATTGTTACTGGAGCAAACCTCACCCAGGCGTCAAATATCACCATGATCCTGCGA
 GGAACAGTACCTGCGAGAGGGATGTGATCCGGGTTAGCCATGTGCTAAATGACACGCATATGAAATTCT
 CACTTCCATCAAGCCGAAAGAAATGAAAGACGTTTGCATCCAGTTTGACGGTGGGACCTGCTCGTCTGC
 AGGGGCTCTGTCTACATTGCTCTGCCACATTGTTCCCTGATAGTTTCTGCCACCACCTGGATCAGCGGT
 GGGCAAAACATAACCATCATGGCAGAAATTTGACGTCATCGACAACCTCATCATTTCACACGAGCTGA
 AGGAAACGCAATGTGAACATAAATGTCTCTGAATACTGCGCAGCAACTTTCTGCAGGTTTCTAGCTCC
 TAATTTAAAGAGCTCAAAGTACGTACAACGTGGCCGTGAAGCTGAGGGTCCAAGACACCTACTGGAC
 TGTGGAACGCTGCAATACCTCGAGGACCCAGATTTACAGGGTACCGAGTGGAGTCAAGAGATTGATACAG
 AATTGGAAGTAAAAATCAAAAAGAAAATGACAATTTCAACATTTCCAAGGATGACATTGATTAATCTCT
 CTTCCATGGGGAAAAATAACAATTTAATTGCAATTTTAAAAATATACTAGAAAACAGGATCTCACAAAC
 ATCCTTTGCAAGATCAAGAGTATCAAGAATGCAAAACCATCGTAGCTCCTCTAAAAAAGTCCGCGTCA
 AGCTGGAAAACCTGGAACCTATGTGGAACAGGAATCAGTTTCTCCACGTGGTATTTTCTAATCGCGCT
 TCCAATCTGTGGCCATTGTATCGTTGTGGCTGTGGTGGTACGAGGTACAAAACCAAGGAGCTCAGT
 CGAAAGCAGAGCCAACAGCTGGAGCTGCTGGAGAGCGAACTCCGGAAGGAGATCCGCGACGGCTTTGCCG
 AGCTCCAGATGGATAAGTTGGATGTGGTTGATAGCTTTGGAACAGTACCCTTCTTGACTACAAAACATTT
 CGCTCTGAGAACCTTTCTCCCTGAGTCAGGTGGCTTACGCACATCTTCACTGAAGATATGCACAACAGA
 GACGCCAATGACAAGAACGAGAGCCTCACAGCCTTGGATGCCCTCATATGTAATAAAGGCTTCTGGTTA
 CCGTATCCATACCCTGGAGAAGCAGAAGAACTTCTCAGTAAAGGACAGGTGTCTCTTCGCTCCTTCT
 AACCATGCTCTGCAACCAAACCTGGTCTACCTGACCAGCATCCTGGAGGTGCTGACCAGGGACCTGATG
 GAGCAGTGCAGTAATATGCAACCAAAGCTGATGCTGAGGCGCACGGAGTCTGTGGTGGAGAAGCTCTGA
 CGAACTGGATGTCTGTCTGTCTCCGGTTTCTCCGGGAGACTGTTGGAGAGCCATTCTATTTGCTGGT
 GACGACCCTGAACCAGAAAATAACAAGGGTCCCGTGGACGTGATCACCTGCAAAGCGCTGTACACCCTG
 AACGAAGACTGGCTACTCTGGCAGTCCCGAATTCAACACTGTGGCATTAAATGTCGTCTTTGAAAAA
 TCCCGAAAACGAGAGTGCAGATGTCTGCCGGAATATTTAGTCAACGTTCTTGACTGCGATACCATAGG
 CCAAGCCAAAAGAAAGGTTTTCCAAGCCTTCTAAGCAAAAATGGTTCTCCATACGGACTCCAGCTCAAT
 GAGATTGGTCTTGAGCTTCAAGTGGGAACCGGCAAAAAGAACTCCTGGACATTGACAGTTCCTCTGTGA
 TTCTTGAAGATGGAATAACCAAGCTAAACACCATTGGCCACTATGAGATATCAAAATGGATCCACTATAAA
 AGTCTTTAAGAAGATAGCAAAATTTACTTCAGATGTGGAGTACTCAGATGACCCTGCCACTTGATTCTG
 CCAGATTCAGAAGCATTCCAAGTGTCAAGGGAAGAGACATCGAGGGAAACACAAGTTCAAAGTAAAAG
 AAATGTATCTGACCAAGCTGCTGTGACCAAGGTGGCAATTCACCTGTGCTTGGAAAACCTTCCGAAG
 CATTGGAGTTTGCCCAATAGCAGGGCCCAATTTGCTATAAAATACTTCTTTGACTTTCTGGATGCCCA
 GCTGAAAACAAAAAATCACAGACCCTGATGTTGTACACATCTGGAACAAACAGCCTCCTCTTCGAT
 TCTGGGTAACATCCTGAAGAACCCTCAGTTTGTCTTTGACATTAAGAAGACACCACACATAGACAGCTG
 TTTGTCAGTGATTGCCAAGCATTATGGATGCCTTTTCTCTCACAGAACAGCAACTGGGGAAGGAAGCA
 CCAACCAATAAATTTCTATGCCAAGGATATACCAACCTACAAAGAGGAAGTGAAGTCTTACTACAAAG
 CAATCAGGGATTTGCCTCCATTGTATCTTTAGAAATGGAAGAATTTTAACTCAGGAATCTAAGAAACA
 TGAAAAATGAATTAATGAAGAAGTGGCCTTGACAGAAATCTACAATACATCGTAAAGTATTTTGTGAG
 ATTTCTAAATAAATAAGAAAGAGAACGAGGGCTGGAAGAAGCTCAGAAACAACCTTTCATGATAAAGTCT
 TATTTGATGAAAAGAAGAAATGCAAGTGGATG

ACGCGTACGCGGCCGCTCGAG – GFP Tag – GTTTAA

Protein Sequence: >MG226359 representing NM_018797
 Red=Cloning site Green=Tags(s)

```

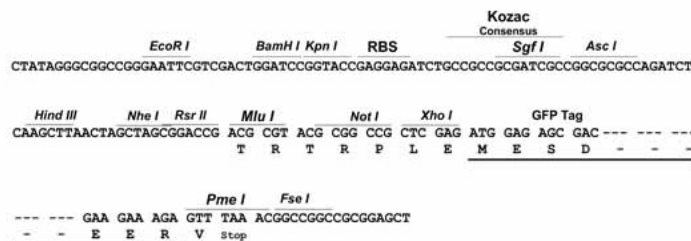
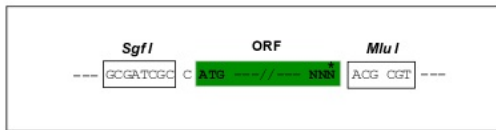
MEVSRRKTPPPPPYAAPLPLIAYLLALAAPARGADEPVWRSEQAIGAI AASRADGVFVASGSLDQLDY
SLKNRLSRLYRDQAGNCTEPVSLAPPARPRPGSSFSKLLL PYREGATGLEGLLL TGWTFDRGACEVRPLG
NLNRSSLRNGTEVVSCHPQGSTAGVYRASGTDLWYLAVAATYVLPETANRCNPAASDRDTAIALKNT
EGRSLATQELGRCLKRGSAGSLHFVDAFLWNGSVYFYPYNYNYSGAATGWPSMARIAQSTEVLFQGGQAA
LDCDHGHPGRRLLLSSSLVEAVDIWAGVFS AATGEGQERRSPATTALCLFRMSEIQAHARSCSWDFQAT
EHNCKEGDRPERVQPIASSTLIHSDLTSVYGTVMNRTVLF LGTGDGQLLKVV LGENLTSNCEVIYEIK
EETPVFYKLVPHPMKNIYIYL TAGKEVRRIPVANCSKRKSCSECLAAADPHCGWCLPLQRCTFQGDCTHA
GSFENWLDISSGPKKCPKIQLRSLRERTTVTIVGSI SARHSECVVKNADTGKLLCQGRSQLNWTACANI
PSRPSYNVLVFNATFSFPSWNLSERFNFTNCASLKECPACIRSGCAWCKRDKKCIHPFTPCEPSDYERNQ
ELCQVAVEKSPKDSGGGRVKESKRNRDTGAVQVFYIKAI EPQKISTLGKSNVIVTGANFTQASNITMILR
GTSTCERDVI R VSHVLNDTHMKFSLPSSRKEMKDVCIQFDGGTCSAGALSYIALPHCSLIVPATTWISG
GQNITIMGRNFDVIDNLIISHELKGNANVNIN VSEYCAATFCRFLAPNLKSSKVRTNAVAKLRVQDQTYLD
CGTLQYLEDRFTGYRVESEIDTELEVKI QKENDNFNISKDDIDITL FHGENKQFNCSFENITRNQDLTT
ILCKIKSIKNANTIASSSKVVRVKG LNLLEYVEQESVPSTWYFLIALPILLAIIVVAVVVTRYKSKELS
RKQSQQLELLESELRKEIRDGF AELQMDKLDVVDSFGTV PFLDYKHFALRTFFPESGGFTHIFTEDMHNR
DANDKNESLTALDALICNKSF LVTVIHTLEKQKNF SVKDRCLFASF LTIALQTKLVYLSILEVLTRDLM
EQCSNMQPKMLMRRTESVVEKLL TNWMSVCLSGFLRETVGEPFYLLVTTLNQKINKGPVDVITCKALYTL
NEDWLLWQVPEFNTVALNVVFEKIPENESADVCRNISVNVLD CDTIGQAKEKVFQAF LSKNGSPYGLQLN
EIGLELQVGT RQKELLDIDSSSVILEDGITK LNTIGHYEISNGSTIKVFKKIANFTSDVEYSDDHCHLIL
PDSEAFQVVQGRHRGKHKFKVKEMYLTKLLSTKVAIHSVLEKLF RSIWLSLPNSRAPFAIKYFFDFLDAQ
AENKKITDPDVVHIWKTNSLPLRFVWNILKNPQVFVDIKKTPHID SCLSVIAQAFMDAFSLTEQQLGKEA
PTNKLLYAKDIPTYKEEVKSYYKAIRDLPPLSSLEMEEF LTQESKKHENEFEVALTEIYKYIVKYVDFE
ILNKLERERGLEEAQKQLLHV KVLDFDEKKCKWM
  
```

TRTRPLE - GFP Tag - V

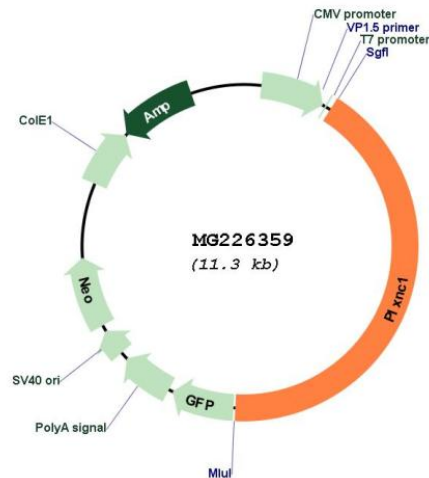
Restriction Sites: SgfI-MluI

Cloning Scheme:

Cloning sites used for ORF Shutting:



Plasmid Map:



ACCN: NM_018797

ORF Size: 4722 bp

OTI Disclaimer: The molecular sequence of this clone aligns with the gene accession number as a point of reference only. However, individual transcript sequences of the same gene can differ through naturally occurring variations (e.g. polymorphisms), each with its own valid existence. This clone is substantially in agreement with the reference, but a complete review of all prevailing variants is recommended prior to use. [More info](#)

OTI Annotation: This clone was engineered to express the complete ORF with an expression tag. Expression varies depending on the nature of the gene.

Components: The ORF clone is ion-exchange column purified and shipped in a 2D barcoded Matrix tube containing 10ug of transfection-ready, dried plasmid DNA (reconstitute with 100 ul of water).

Reconstitution Method:

1. Centrifuge at 5,000xg for 5min.
2. Carefully open the tube and add 100ul of sterile water to dissolve the DNA.
3. Close the tube and incubate for 10 minutes at room temperature.
4. Briefly vortex the tube and then do a quick spin (less than 5000xg) to concentrate the liquid at the bottom.
5. Store the suspended plasmid at -20°C. The DNA is stable for at least one year from date of shipping when stored at -20°C.

RefSeq: [NM_018797.3](#)

RefSeq Size:	7059 bp
RefSeq ORF:	4725 bp
Locus ID:	54712
UniProt ID:	<u>Q9QZC2</u>
Cytogenetics:	10 C2
Gene Summary:	Receptor for SEMA7A, for vaccinia virus semaphorin A39R and for herpesvirus Sema protein. Binding of semaphorins triggers cellular responses leading to the rearrangement of the cytoskeleton and to secretion of IL6 and IL8 (By similarity).[UniProtKB/Swiss-Prot Function]