

## Product datasheet for **MG226356**

### **Ntrk3 (NM\_182809) Mouse Tagged ORF Clone**

#### **Product data:**

Product Type:	Expression Plasmids
Product Name:	Ntrk3 (NM_182809) Mouse Tagged ORF Clone
Tag:	TurboGFP
Symbol:	Ntrk3
Synonyms:	AW125844; Ntrk3_tv3; TrkC
Mammalian Cell Selection:	Neomycin
Vector:	pCMV6-AC-GFP (PS100010)
E. coli Selection:	Ampicillin (100 ug/mL)



[View online »](#)

**ORF Nucleotide Sequence:**

>MG226356 representing NM\_182809  
 Red=Cloning site Blue=ORF Green=Tags(s)

TTTTGTAATACGACTCACTATAGGGCGGCCGGGAATTCGTCGACTGGATCCGGTACCGAGGAGATCTGCC  
 GCC**GCGATCGCC**

ATGGATGTCTCTCTTTGCCAGCCAAGTGTAGTTCTGGCGGATTTTCTGCTGGGAAGCGTCTGGCTGG  
 ACTATGTGGGCTCCGTGCTGGCTTGCCCTGCAAATTTGTGCTGCAGCAAGACTGAGATCAATTGCCGGCG  
 GCCGGACGATGGGAACCTCTCCCTCTCCTGGAAGGGCAGGATTCAGGGAACAGCAATGGGAACGCCAGC  
 ATCAACATTACGGACATCTCAAGGAATACACTCCATACACATAGAGAAGTGGCGAGGCTGCACACAC  
 TCAATGCTGTGGACATGGAGCTTACACGGGACTCCAGAAGCTGACCATCAAGAATCTGGACTCCGGAA  
 CATCCAGCCCAGAGCCTTCGCCAAGAACCCCACTTGCCTTATAAACTTGTCAAGTAACCGGCTCACC  
 AACTCTCCTGGCAGCTTCCAGACGCTGAGCCTTCGGGAATTGAGACTGGAGCAGAATCTTCAACT  
 GCAGCTGTGACATCCGCTGGATGCAGCTGTGGCAGGAACAGGGGGAGGCGCGGCTGGACAGCCAGAGCCT  
 TACTGCATCAGTCTGATGGCTCCCACTCCCTCTTCGCATGAACATCAGTCAGTGTGATCTCCCA  
 GAGATCAGTGTGAGCCAGTCAACCTGACTGTCCGAGAAGGAGACAATGCCGTGATCACTTGCAATGGCT  
 CTGGCTCTCCTTTGCCTGATGTGGACTGGATAGTCACTGGGCTGCACTCCATCAACACCCACCAGACCA  
 TCTGAAGTGGACCAATGTACATGCCATCAACTGACCCTGGTGAACGTGACGAGCGAGGACAATGGCTTC  
 ACCCTGACGTGCATTGCAGAGAAGCTGGTGGGCATGAGCAATGCCAGTGTGCTCTCACTGTCTACTACC  
 CTCCACGTGTGGTGGCTGGTGGAGCCTGAGGTACGCTGGAACATTGCATTGAGTTTGGTGGCTGG  
 CAACCCGACCCACGCTCCACTGGCTGTACAATGGACAGCCATTGAGGGAGTCCAAGATCATTACATG  
 GACTACTACCAGGAGGGGAGGTCTCAGAGGGCTGCCTGCTTCAACAAGCCCACCCACTACAACAATG  
 GCAACTACACCTCATTGCTAAGAATGCCCTGGGCACGGCAACCAGACCATCAACGGCCACTTCTGAA  
 GGAGCCCTTCCAGAGAGCACAGATTTCTTTGACTTTGAGTCTGATGCGAGCCCTACACCTCCTATCACT  
 GTGACCCACAAACCAGAGGAAGACACTTTTGGGTGTCCATAGCAGTCCGACTTGTGCCTTTGCCTGCG  
 TCCTTCTGGTGGTCTCTTTATCATGATCAACAAGTATGGTCCGCGTCCAAATTTGGAATGAAGGGTCC  
 TGTGGCTGTTATCAGTGGAGAGGAGGACTCAGCCAGCCCACTGCATCACATCAACCATGGCATCACTACA  
 CCATCATCGTTGGATGCTGGCCTGACACAGTGGTCAATGGCATGACCCGCATCCAGTCATTGAGAACC  
 CCCAGTACTTCCGTCAGGGTCACAATTGCCACAAGCCAGACACATGGGTCTTTTCAAACATAGACAATCA  
 TGGGATATTAACCTGAAGGACAATAGAGATCATCTAGTCCCATCACTACTATATATAGAGGAACCT  
 GAGGTCCAGAGTGGGATGTGTCTTACCAAGGTACATGGTTTCAGAGAAATTATGTTGAATCCAATAA  
 GCCTTCCGGACATTCGAAGCCTTAACCATGGCATCTATGTTGAGGATGTCAATGTTTATTTAGCAA  
 AGGACGTCATGGCTTT

**ACGCGTACGCGGCCGCTCGAG** - GFP Tag - GTTTAA

**Protein Sequence:**

>MG226356 representing NM\_182809  
 Red=Cloning site Green=Tags(s)

MDVSLCPAKCSFWRIFLLGSVWLDYVGSVLACPANCVCVKTEINCRPPDDGNLFPLLEGQDSGNSNGNAS  
 INITDISRNITSIHIENWRGLHTLNAVDMELYTGLQKLTIKNSGLRNIQPRAFAKNPHLRYINLSSNRLT  
 TLSWQLFQTLSLRELRLQNFNCS DIRWMQLWQEQEARLDSQSLYCISADGSQPLFRMNISQCDLP  
 EISVSHVNLTVREGDNAVITCNGSGSPLPDVDWIVTGLQSIINTHQTNLWNVHAINLTLVNVTSEDNGF  
 TLTCIAENVVGMNASVALTVYPPRVVSLVEPEVRLEHCIEFVVRGNPTPLHWLYNGQPLRESKIIHM  
 DYYQEGEVSEGCLLFNKPTHYNNGYTLIAKNALGTANQTINGHFLKEPFPESTDFDFESDASPTPPIT  
 VTHKPEEDTFGVSIAVGLAAFACVLLVLFIMINKYGRRSKFGMKGPVAVISGEEDSASPLHHINHGITT  
 PSSLDAGPDTVVIGMTRIPVIENPQYFRQGHNCHKPDTWVFSNIDNHGILNLDKNDRHLVPSTHYIYEPE  
 EVQSGDVSYPESHGFRIMLNPIISLSGHSKPLNHGIYVEDVNVYFSGRHF

**TRTRPLE** - GFP Tag - V

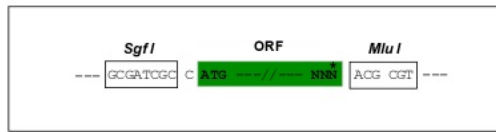
**Chromatograms:**

[https://cdn.origene.com/chromatograms/ja2353\\_g04.zip](https://cdn.origene.com/chromatograms/ja2353_g04.zip)

**Restriction Sites:** Sgfl-MluI

**Cloning Scheme:**

Cloning sites used for ORF Shutting:



**ACCN:** NM\_182809

**ORF Size:** 1836 bp

**OTI Disclaimer:** Due to the inherent nature of this plasmid, standard methods to replicate additional amounts of DNA in E. coli are highly likely to result in mutations and/or rearrangements. Therefore, OriGene does not guarantee the capability to replicate this plasmid DNA. Additional amounts of DNA can be purchased from OriGene with batch-specific, full-sequence verification at a reduced cost. Please contact our customer care team at [custsupport@origene.com](mailto:custsupport@origene.com) or by calling 301.340.3188 option 3 for pricing and delivery.

The molecular sequence of this clone aligns with the gene accession number as a point of reference only. However, individual transcript sequences of the same gene can differ through naturally occurring variations (e.g. polymorphisms), each with its own valid existence. This clone is substantially in agreement with the reference, but a complete review of all prevailing variants is recommended prior to use. [More info](#)

**OTI Annotation:** This clone was engineered to express the complete ORF with an expression tag. Expression varies depending on the nature of the gene.

**Components:** The ORF clone is ion-exchange column purified and shipped in a 2D barcoded Matrix tube containing 10ug of transfection-ready, dried plasmid DNA (reconstitute with 100 ul of water).

**Reconstitution Method:**

1. Centrifuge at 5,000xg for 5min.
2. Carefully open the tube and add 100ul of sterile water to dissolve the DNA.
3. Close the tube and incubate for 10 minutes at room temperature.
4. Briefly vortex the tube and then do a quick spin (less than 5000xg) to concentrate the liquid at the bottom.
5. Store the suspended plasmid at -20°C. The DNA is stable for at least one year from date of shipping when stored at -20°C.

**RefSeq:** [NM\\_182809.2](#), [NP\\_877961.1](#)

**RefSeq Size:** 3847 bp

**RefSeq ORF:** 1839 bp

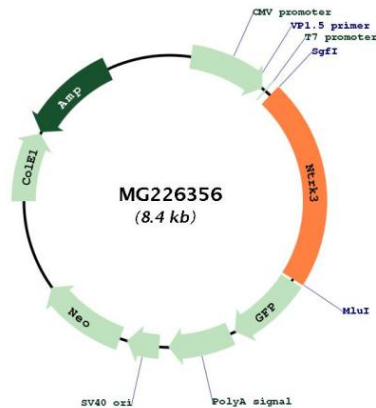
**Locus ID:** 18213

**UniProt ID:** [Q6VNS1](#)

**Cytogenetics:** 7 44.01 cM

**Gene Summary:** Receptor tyrosine kinase involved in nervous system and probably heart development. Upon binding of its ligand NTF3/neurotrophin-3, NTRK3 autophosphorylates and activates different signaling pathways, including the phosphatidylinositol 3-kinase/AKT and the MAPK pathways, that control cell survival and differentiation.[UniProtKB/Swiss-Prot Function]

### Product images:



Circular map for MG226356