

## Product datasheet for **MG226352**

### **Ntrk3 (NM\_008746) Mouse Tagged ORF Clone**

#### **Product data:**

|                           |  |
|---------------------------|--|
| Product Type:             | Expression Plasmids                      |
| Product Name:             | Ntrk3 (NM_008746) Mouse Tagged ORF Clone |
| Tag:                      | TurboGFP                                 |
| Symbol:                   | Ntrk3                                    |
| Synonyms:                 | AW125844; Ntrk3_tv3; TrkC                |
| Mammalian Cell Selection: | Neomycin                                 |
| Vector:                   | pCMV6-AC-GFP (PS100010)                  |
| E. coli Selection:        | Ampicillin (100 ug/mL)                   |



[View online »](#)

ORF Nucleotide  
Sequence:

>MG226352 representing NM\_008746  
 Red=Cloning site Blue=ORF Green=Tags(s)

TTTTGTAATACGACTCACTATAGGGCGGCCGGGAATTCGTCGACTGGATCCGGTACCGAGGAGATCTGCC  
 GCC**GCGATCGCC**

ATGGATGTCTCTCTTTGCCAGCCAAGTGTAGTTCTGGCGGATTTTCTGCTGGGAAGCGTCTGGCTGG  
 ACTATGTGGGCTCCGTGCTGGCTTGCCCTGCAAATTTGTGCTGCAGCAAGACTGAGATCAATTGCCGGCG  
 GCCGGACGATGGGAACCTCTCCCTCTCCTGGAAGGGCAGGATTCAGGGAACAGCAATGGGAACGCCAGC  
 ATCAACATTACGGACATCTCAAGGAATATCACTTCCATACACATAGAGAAGTGGCGAGGCTGCACACAC  
 TCAATGCTGTGGACATGGAGCTTACACGGGACTCCAGAAGCTGACCATCAAGAATCTGGACTCCGGAA  
 CATCCAGCCCAGAGCCTTCGCCAAGAACCCCACTTGCCTTATAAACTTGTCAAGTAACCGGCTCACC  
 AACTCTCCTGGCAGCTTCCAGACGCTGAGCCTTCGGGAATTGAGACTGGAGCAGAATCTTCAACT  
 GCAGCTGTGACATCCGCTGGATGCAGCTGTGGCAGGAACAGGGGAGGCGCGCTGGACAGCCAGAGCCT  
 TACTGCATCAGTCTGATGGCTCCCACTCCCTCTTCGCATGAACATCAGTCAGTGTGATCTCCCA  
 GAGATCAGTGTGAGCCAGTCAACCTGACTGTCCGAGAAGGAGACAATGCCGTGATCACTTGCAATGGCT  
 CTGGCTCTCCTTTGCCTGATGTGGACTGGATAGTCACTGGGCTGCACTCCATCAACACCCACCAGACCA  
 TCTGAAGTGGACCAATGTACATGCCATCAACTGACCCTGGTGAACGTGACGAGCGAGGACAATGGCTTC  
 ACCCTGACGTGCATTGCAGAGAAGCTGGTGGGCATGAGCAATGCCAGTGTGCTCTCACTGTCTACTACC  
 CTCCACGTGTGGTGGCTGGTGGAGCCTGAGGTACGCCCTGGAACATTGCATTGAGTTTGGTGGCTGG  
 CAACCCGACACCCACGCTCCACTGGCTGTACAATGGACAGCCATTGAGGGAGTCCAAGATCATTACATG  
 GACTACTACCAGGAGGGGAGGTCTCAGAGGGCTGCCTGCTTCAACAAGCCCACCCACTACAACAATG  
 GCAACTACACCTCATTGCTAAGAAATGCCCTGGGCACGGCAACCAGACCATCAACGGCCACTTCTGAA  
 GGAGCCCTTCCAGAGAGCACAGATTTCTTTGACTTTGAGTCTGATGCGAGCCCTACACCTCCTATCACT  
 GTGACCCACAAACCAGAGGAAGACACTTTTGGGTGTCCATAGCAGTCGGACTTGTGCCTTTGCCTGCG  
 TCCTTCTGGTGGTCTCTTTATCATGATCAACAAGTATGGTGCCTGCAAAATTTGGAATGAAGGGTCC  
 TGTGGCTGTTATCAGTGGAGAGGAGGACTCAGCCAGCCACTGCATCACATCAACCATGGCATCACTACA  
 CCATCATCGTTGGATGCTGGCCTGACACAGTGGTCAATGGCATGACCCGCATCCAGTCATTGAGAACC  
 CCCAGTACTTCCGTCAGGGTCACAATTGCCACAAGCCAGACACATATGTTGAGCAGTCAAGAGGAGAGA  
 CATCGTGTGAAGAGAGAATTGGGTGAGGGAGCCTTTGGGAAGGTCTTCTGGCTGAGTGTACAATCTA  
 AGCCCCACAAAGACAAGATGCTAGTGGCAGTGAAGGCCCTGAAGGATCCACCTTGGCTGCCAGGAAGG  
 ATTTCCAGAGGGAGGCTGAGCTGCTCACGAACCTGCAGCATGAGCATATTGTCAAGTTCTATGGGGTGTG  
 TGGTATGGTGGTCACTCATATGGTCTTTGAATACATGAAGCATGGAGACCTTAACAAGTTCTCAGG  
 GCCCATGGGCCAGATGCCATGATCCTCGTGGATGGACAGCCACGTGAGCCAAAGGGGAGCTAGGGCTCT  
 CTCAGATGCTCCACATCGCCAGTCAGATAGCCTCGGGCATGGTGTACCTGGCTTCCAGCACTTTGTACA  
 CCGGGACCTGGCCACGAGGAAGTGCCTGGTGGAGCCAATCTACTAGTGAAGATTGGAGATTTTGGCATG  
 TCCAGGGACGCTACAGTACTGATTACTACAGGTGGGAGGACACACCATGCTCCCATCCGCTGGATGC  
 CCCCTGAAAGCATAATGTACCGGAAGTTCACCACAGAGAGTGTGCTGGAGCTTCGGGGTATTCTTTG  
 GGAGATCTTTACCTATGGGAAGCAACCATGGTTCAGCTTTC AACACGGAGGTCATTGAATGCATCACC  
 CAAGGCCGTGTCTTGGAGAGACCCAGAGTCTGCCCTAAAGAAGTGTATGATGTCATGCTGGGGTGTGCG  
 AGAGGGAAACCACAGCAGCGGCTGAATATTAAGGAGATCTACAAAATCCTCCATGCTTTGGGAAGGCCAC  
 CCCGATCTACCTGGACATTCTTGGC

**ACGCGT**ACGCGGCCGCTCGAG - GFP Tag - GTTTAA

**Protein Sequence:** >MG226352 representing NM\_008746  
 Red=Cloning site Green=Tags(s)

```
MDVSLCPAKCSFWRIFLLGSVWLDYVGSVLACPANCVCSTEINCRPPDDGNLFPLLEGQDSGNSNGNAS
INITDISRNITSIHIENWRGLHTLNAVDMELYTGLQKLTIKNSGLRNIQPRAFKNPHLRINLSSNRLT
TLQSWQLFQTLRLRELRLQNFNCSCDIRWMLWQEQGEARLDSQSLYCI SADGSQLPLFRMNISQCDLP
EISVSHVNLTVREGDNAVITCNGSGSPLPDVDWI VTGLQSINTHQTNLNWTNVHAINLTLVNVTS EDNGF
TLTCIAENVVGMNASVALTVYYPPRVVSLVEPEVRLEHCIEFVVRGNPTPLHWLYNGQPLRESKIIHM
DYYQEGEVSEGCLLFNKPTHYNNNGNYTLIAKNALGTANQTINGHFLKEPFPESTDFDFESDASPTPPIT
VTHKPEEDTFGVSI AVGLAAAFACVLLVVL FIMINKYGRRSKFGMKGPVAVISGEEDSASPLHHINHGITT
PSSLDAGPDTVVIGMTRIPVIENPQYFRQGHNCHKPDTYVQHIKRRDIVLKRELGEFAGKVF LAECYNL
SPTKDKMLVAVKALKDPTLAARKDFQREAE LLTNLQHEHIVKFGVCGDGDPLIMVFEYMKHGDLNKFLR
AHGPDAMILVDGQPRQAKGELGLSQMLHIASQIASGMVYLASQHFVHRDLATRNCLVGNLLVKIGDFGM
SRDVYSTDYRVRGGHTMLPIRWMPPESIMYRKFTTESDVWSFGVILWEIFTYGKQPFQLSNTEVIECIT
QGRVLERPRVCPKEVYDVMLGCWQREPQRLNIKEIYKILHALGKATPIYLDILG
```

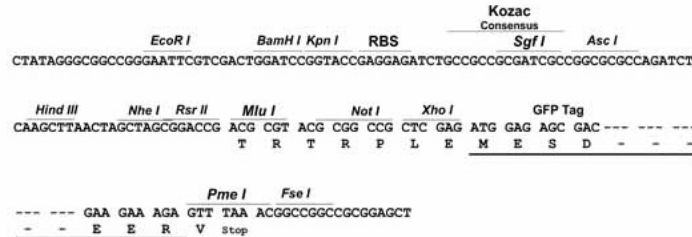
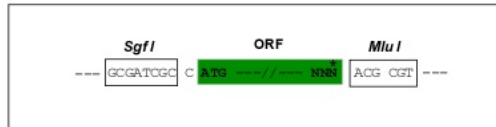
TRTRPLE - GFP Tag - V

**Chromatograms:** [https://cdn.origene.com/chromatograms/ja1836\\_h02.zip](https://cdn.origene.com/chromatograms/ja1836_h02.zip)

**Restriction Sites:** Sgfl-Mlul

Cloning Scheme:

Cloning sites used for ORF Shutting:



ACCN: NM\_008746

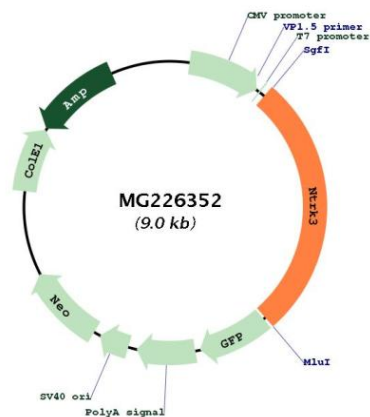
ORF Size: 2475 bp

OTI Disclaimer: Due to the inherent nature of this plasmid, standard methods to replicate additional amounts of DNA in E. coli are highly likely to result in mutations and/or rearrangements. Therefore, OriGene does not guarantee the capability to replicate this plasmid DNA. Additional amounts of DNA can be purchased from OriGene with batch-specific, full-sequence verification at a reduced cost. Please contact our customer care team at [custsupport@origene.com](mailto:custsupport@origene.com) or by calling 301.340.3188 option 3 for pricing and delivery.

The molecular sequence of this clone aligns with the gene accession number as a point of reference only. However, individual transcript sequences of the same gene can differ through naturally occurring variations (e.g. polymorphisms), each with its own valid existence. This clone is substantially in agreement with the reference, but a complete review of all prevailing variants is recommended prior to use. [More info](#)

|                               |   |
|-------------------------------|---|
| <b>OTI Annotation:</b>        | This clone was engineered to express the complete ORF with an expression tag. Expression varies depending on the nature of the gene.  |
| <b>Components:</b>            | The ORF clone is ion-exchange column purified and shipped in a 2D barcoded Matrix tube containing 10ug of transfection-ready, dried plasmid DNA (reconstitute with 100 ul of water).  |
| <b>Reconstitution Method:</b> | <ol style="list-style-type: none"><li>1. Centrifuge at 5,000xg for 5min.</li><li>2. Carefully open the tube and add 100ul of sterile water to dissolve the DNA.</li><li>3. Close the tube and incubate for 10 minutes at room temperature.</li><li>4. Briefly vortex the tube and then do a quick spin (less than 5000xg) to concentrate the liquid at the bottom.</li><li>5. Store the suspended plasmid at -20°C. The DNA is stable for at least one year from date of shipping when stored at -20°C.</li></ol> |
| <b>RefSeq:</b>                | <a href="#">NM_008746.5</a> , <a href="#">NP_032772.3</a>   |
| <b>RefSeq Size:</b>           | 2978 bp   |
| <b>RefSeq ORF:</b>            | 2478 bp   |
| <b>Locus ID:</b>              | 18213   |
| <b>UniProt ID:</b>            | <a href="#">Q6VNS1</a>  |
| <b>Cytogenetics:</b>          | 7 44.01 cM  |
| <b>Gene Summary:</b>          | Receptor tyrosine kinase involved in nervous system and probably heart development. Upon binding of its ligand NTF3/neurotrophin-3, NTRK3 autophosphorylates and activates different signaling pathways, including the phosphatidylinositol 3-kinase/AKT and the MAPK pathways, that control cell survival and differentiation.[UniProtKB/Swiss-Prot Function]  |

## Product images:



Circular map for MG226352