

## Product datasheet for **MG226349**

### **Bmx (NM\_009759) Mouse Tagged ORF Clone**

#### **Product data:**

Product Type:	Expression Plasmids
Product Name:	Bmx (NM_009759) Mouse Tagged ORF Clone
Tag:	TurboGFP
Symbol:	Bmx
Synonyms:	Etk; Etk/Bmx; Tyro8
Mammalian Cell Selection:	Neomycin
Vector:	pCMV6-AC-GFP (PS100010)
E. coli Selection:	Ampicillin (100 ug/mL)



[View online »](#)

ORF Nucleotide  
Sequence:

>MG226349 representing NM\_009759  
Red=Cloning site Blue=ORF Green=Tags(s)

TTTTGTAATACGACTCACTATAGGGCGGCCGGAATTCGTCGACTGGATCCGGTACCGAGGAGATCTGCC  
GCCGCGATCGCC

ATGGACGACAATATGGAGAGTAAATCCATTCTGGAAGAACTGCTTCTCAAAAAGTCACAGCAAAAAGAAGA  
AAATGTCACCAAATAATTACAAGGAGCGGCTTTTTGTTCTAACCAAAAACAAGCCTTTCCTACTATGAATA  
CGACAAAATGAAAAGAGGAAGCAGAAAAGGATCAATAGAAATTAAGAAAATCAGATGTGTGGAAAAAGTC  
AACCTTGAGGAGCAGACACCGGTGGAGAGACAGTACCCATTTTCAGATTGTGTATAAAGATGGGCTTCTTT  
ATGTCTATGCATCGAATGAAGAGAGCCGATGTCAGTGGTAAAAGCGCTGCAAAAAGAGATACGGGGCAA  
CCCTCACCTGTTGATCAAGTATCACAGTGGCTTCTTTGTGGATGGAAAAGTTCCTGTGTTGCCAGCAGAGC  
TGCAAAGCAGCCCAGGATGCACTCTCTGGGAAGCATATGCTGATCTGCACATCGCAATCAGTGATGAGA  
AACACAGAGCTCCCACTTCCAGAGAGGCTACTGAAGATTCAGGGCAGTTCCCGTTCTCAAAATGGA  
TGCATCATCTTCAGGTGCCATTCTACCCAATATGACAGCTATTCAGAAAAGTGTGGTTCCAGCCA  
ACCAGCAACATACGCTATATTCCAAGGGAAGACTGCCCTGACTGGTGGCAAGTAAGAAAAGTCAAAAAGCG  
AGGAAGACATTGCATGCAGTAACCAACTGGAAAAGAAATATCGCCTCTCACAGCACCTCAAAGATGTCATG  
GGGATTCCTGAGTCAAGTTCATCAGAAGAAGAGGAAAATCTGCATGCTTATGACTGGTTTCTGGGAAT  
ATCTCCAGGTCACAATCTGAGCAGTACTGAGACAAAAGGAAAAGAAAGGAGCATTTATGGTTCGGAAAT  
CCAGCCAGATGGGAATGTACACTGTGTCCTTATTTAGTAAGGCTGTAATGATAAAAAGGAACTGTCAA  
GCATTACCACGTGCATACTAATGCTGAAAATAAATTAACCTGGCTGAAAAGTACTGCTTTGATTCCATT  
CCAAAGCTCATTCACTATACCAACATAATTCAGCAGGCATGATCACACGGCTCCGCCACCCAGTGTCAA  
CCAAGCCAACAAGGTCGCGGTGTCTGTGGCTCTGGGAAGTGAATTTGGGAAGTAAAAGAGAAGAGAT  
TACCTTGCTGAAGGAGCTGGGCAATGGCCAGTTTGGAGTGGTCCAGCTGGGCCAGTGAAGGGGCAATAT  
GATGTGGCTGTAAGATGATCAAGGAGGTGCCATGTCAGAAGATGAATTCCTTCAGGAGGCCAGACCA  
TGATGAAACTCAGCCATCCCAAGCTGGTGAAGTCTACGGAGTATGCTCAAGAAAATACCCCATCTATAT  
AGTAACTGAGTATATAACAAATGGTTGCTTGTCTAATTACCTGAAGAGTCATGGGAAAGGACTAGAAAGT  
TGCCAGCTCTTAGAAATGTGTTATGATGTCTGTGAAGGCATGGCCTTCTTGGAGAGCCATCAGTTCATAC  
ATCGAGATTTGGCTGCTCGAACTGTTTGGTGGACAGTATCTCTGTGAAAAGTCTCAGACTTTGGAAT  
GACGAGATATGTCCTTGATGATCAGTATGTCAGCTCAGTAGGAACCAAGTTCCAGTCAAGTGGTCAGCT  
CCAGAGGTGTTTCACTACTTCAAATACAGCAGCAAGTCGGATGTATGGGCATTTGGGATCCTGATGTGGG  
AGGTGTTTAGTCTAGGGAAGCAGCCCTATGACTTATATGATAACTCCGAGGTGGTTGTGAAGGTCTCCCA  
GGGCCACAGACTTACCGGCCCAACTGGCATCAGACACCATCTACCAGATCATGTACAGCTGCTGGCAT  
GAGCTTCCAGAAAAGCGCCACATTTAGCAACTCCTGTCTGCCATAGAACCCTTCGGGAACAAGATA  
AACCA

ACGCGTACGCGGCCGCTCGAG - GFP Tag - GTTTAA

**Protein Sequence:** >MG226349 representing NM\_009759  
Red=Cloning site Green=Tags(s)

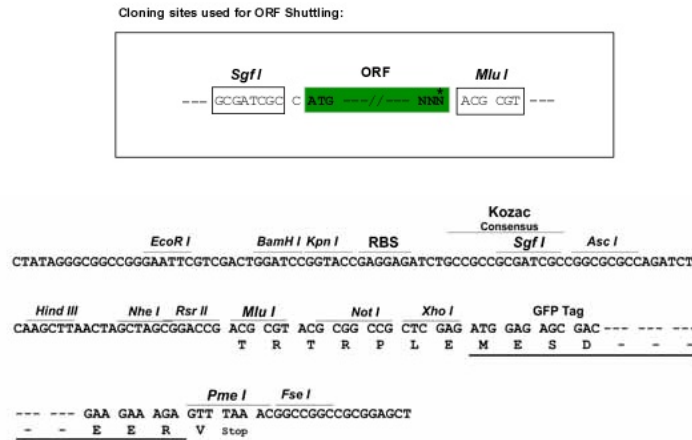
```
MDDNMESKSILEELLKKSQKKKMSPNNYKERLFLVLTKTSLSYEYDKMKRGRKGSIEIKKIRCVEKV
NLEEQTPVERQYPFQIVYKDGLLYVYASNEESRCQWLKALQKEIRGNPHLLIKYHSGFFVDGKFLCCQQS
CKAAPGCTLWEAYADLHIAISDEKHRAPTFPERLLKIPRAVPVLKMDASSGAILPOYDSYSKSKSCGSQP
TSNIRYIPREDCPDWWQVRKLKSEEDIACSNQLERNIAHSTSKMSWGFPESSSSEEEENLHAYDWFAGN
ISRSQSEQLLRQKGEAFMVRNSSQMGMYTVSLFSKAVNDKKGTVKHYHVHTNAENKLYLAENYCFDSI
PKLIHYHQHNSAGMITRLRHPVSTKANKVPVSVALGSGIWELKREEITLLKELGNGQFGVVQLGQWKQY
DVAVKMIKEGAMSEDEFFQEAQTMKLSHPKLVKFGVCSKKYPIYIVTEYITNGCLLNLYKSHGKGLS
CQLLEMCYDVCEGMAFLESHQFIHRDLAARNCLVSDLSVKVSDFGMTRYVLDQDYVSSVGTKFPVKWSA
PEVFHYFKYSSKSDVWAFGILMWEVFLGKQPYDLYDNSEVVVKVQSGHRLYRPLASDTIYQIMYSCWH
ELPEKRPTFQQLLSAIEPLREQDKP
```

TRTRPLE - GFP Tag - V

**Chromatograms:** [https://cdn.origene.com/chromatograms/ja1739\\_g02.zip](https://cdn.origene.com/chromatograms/ja1739_g02.zip)

**Restriction Sites:** Sgfl-MluI

**Cloning Scheme:**



**ACCN:** NM\_009759

**ORF Size:** 1965 bp

**OTI Disclaimer:** The molecular sequence of this clone aligns with the gene accession number as a point of reference only. However, individual transcript sequences of the same gene can differ through naturally occurring variations (e.g. polymorphisms), each with its own valid existence. This clone is substantially in agreement with the reference, but a complete review of all prevailing variants is recommended prior to use. [More info](#)

**OTI Annotation:** This clone was engineered to express the complete ORF with an expression tag. Expression varies depending on the nature of the gene.

**Components:** The ORF clone is ion-exchange column purified and shipped in a 2D barcoded Matrix tube containing 10ug of transfection-ready, dried plasmid DNA (reconstitute with 100 ul of water).

**Reconstitution Method:**

1. Centrifuge at 5,000xg for 5min.
2. Carefully open the tube and add 100ul of sterile water to dissolve the DNA.
3. Close the tube and incubate for 10 minutes at room temperature.
4. Briefly vortex the tube and then do a quick spin (less than 5000xg) to concentrate the liquid at the bottom.
5. Store the suspended plasmid at -20°C. The DNA is stable for at least one year from date of shipping when stored at -20°C.

**RefSeq:** [NM\\_009759.4](#), [NP\\_033889.2](#)

**RefSeq Size:** 3005 bp

**RefSeq ORF:** 1968 bp

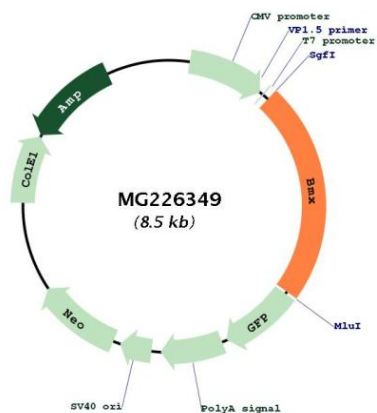
**Locus ID:** 12169

**UniProt ID:** [P97504](#)

**Cytogenetics:** X F5

**Gene Summary:** Non-receptor tyrosine kinase that plays central but diverse modulatory roles in various signaling processes involved in the regulation of actin reorganization, cell migration, cell proliferation and survival, cell adhesion, and apoptosis. Participates in signal transduction stimulated by growth factor receptors, cytokine receptors, G-protein coupled receptors, antigen receptors and integrins. Induces tyrosine phosphorylation of BCAR1 in response to integrin regulation. Activation of BMX by integrins is mediated by PTK2/FAK1, a key mediator of integrin signaling events leading to the regulation of actin cytoskeleton and cell motility. Plays a critical role in TNF-induced angiogenesis, and implicated in the signaling of TEK and FLT1 receptors, 2 important receptor families essential for angiogenesis. Required for the phosphorylation and activation of STAT3, a transcription factor involved in cell differentiation. Also involved in interleukin-6 (IL6) induced differentiation. Plays also a role in programming adaptive cytoprotection against extracellular stress in different cell systems, salivary epithelial cells, brain endothelial cells, and dermal fibroblasts. May be involved in regulation of endocytosis through its interaction with an endosomal protein RUFY1. May also play a role in the growth and differentiation of hematopoietic cells; as well as in signal transduction in endocardial and arterial endothelial cells.[UniProtKB/Swiss-Prot Function]

Product images:



Circular map for MG226349