

## Product datasheet for **MG226344**

### Myo9b (NM\_001142323) Mouse Tagged ORF Clone

#### Product data:

Product Type:	Expression Plasmids
Product Name:	Myo9b (NM_001142323) Mouse Tagged ORF Clone
Tag:	TurboGFP
Symbol:	Myo9b
Mammalian Cell Selection:	Neomycin
Vector:	pCMV6-AC-GFP (PS100010)
E. coli Selection:	Ampicillin (100 ug/mL)
ORF Nucleotide Sequence:	>MG226344 representing NM_001142323 Red=Cloning site Blue=ORF Green=Tags(s)

TTTTGTAATACGACTCACTATAGGGCGGCCGGAATTCGTCGACTGGATCCGGTACCGAGGAGATCTGCC  
GCC**CGATCGCC**

ATGAGTGCACGAGGCTGGCAGCTCGGGCGTCGGCAGCAGGCCACCTACCACCTGCACATCTACCCGC  
AGCTGTCCAGCGCTGGGAGCCAGACCTCATGCCGTGTGACCGCCACCAAGGACAGCACAACAAGCGATGT  
CATCCAGGATGTGGTGGCCAGCCTACACCTGGATGGCTCGAAGCACTACGTGCTGGTGGAGGTGAAGGAG  
TCAGGCCGGGAGGAGTGGTGTGGATGCCAGCAGCTCACCTGTACACCGAGTGTACTGTCCCTCGGC  
GAGCTCAGGACGAGCACCCTCAGGAGGATGGCTACTACTTCTTGCTGCAGGAACGCAATGCTGATGGCAG  
TATTCACTACCTGCCATACAGCTGCTGGCTCAGCCTACAGCTGCATGTGCGCTGGTAGAGCGAGGGCTG  
TTGCCGAGGCTCAAGCAGACTTTGATGACCTGTGCAACCTGCCAGAGCTGACTGAAGCCAACTGCTGC  
AGAACCTGAAGCTGCGCTTCATGCAGCAAAAGATCTACACATACGCGGGCAGCATCCTGGTGGCCATCAA  
CCCCTTAAGTTCCTGCCATTTACAACCCCAAGTATGTGAAGATGTATGAGAACCAACAGCTGGGCAAA  
CTGGAGCCACATGTGTTGCTCTGGCCGATGTAGCCTACTACGCCATGCTGCGCAAGCAGTGAACCAGT  
GTATCGTCATCTCTGGTGAAGTGGCTCTGGCAAGACACAGACCAACTTCTCATCCACTGCCTCAC  
AGCGCTCAGCCAGAAGGGCTATGCCAGTGGCGTCGAAAGGACCATCCTGGGAGCAGGGCCTGTGCTGGAG  
GCTTTTGGGAATGCCAAGACAGCCACAACAACAACTCCAGCCGCTTCGGGAAGTTCATCCAAGTCAACT  
ACCTAGAAAATGGCATTGTGAGGGGAGCTGTTGTGGAAAAATACCTTCTTGAAAAGTCTCGCCTGGTTTC  
CCAGGAGAAGGATGAGCGGAACCTACCATGTGTTTTATTATCTGCTGCTGGGTGTCAGTGAGGAGGAGCGC  
CTGGAATTTAGCTGAAGCAGCCTCAAGACTATTTCTACCTCAACCAGCATAACTTGAATATTGAAGATG  
GAGAAGACCTCAAACATGACTTTGAAAGGCTTCAGCAGGCCATGGAGATGGTGGGCTTCTGCTGCCAC  
CAAGAAGCAGATCTTCTGTCTCTCAGCCATCCTGTACCTGGCAATGTCACCTACAAGAAGAGAGCC  
ACAGGCCGAGATGAAGGCTGGAGGTGGTCTCCAGAGGTGTTGGACACCCTCTCCAGCTCTTAAAGG  
TAAAGCGGAGACCCTGGTGGAGGTCTTAACCAAGAGAAAAACAGTTACAGTCAATGACAAACTATCCT  
GCCTTACAGCCTCAGTGAGGCCATAACTGCACGAGACTCCATGGCCAAGTCCCTATACAGTGCCTATTT  
GACTGGATTGTGCTAAGGATCAACCACGCCCTCCTCAACAAGAAGGACATGGAAGAGGCTGTTTCTGCT  
TGTCATTGGCGTCTGGACATCTTTGATTTGAGGACTTCGAAAGGAATAGCTTTGAGCAGTTTTGCAT



[View online »](#)

CAACTATGCCAATGAGCAGTTGCAGTACTTTCACCCAGCACATCTTCAAGCTGGAGCAGGAGGAGTAC  
 CAGGGTGAGGGCATCTCGTGGCACAACATTGACTACACCGACAACGTGGGCTGTATCCACCTCATCAGCA  
 AGAAGCCCACTGGCCTCTTACCTGCTGGACGAGGAGAGCAACTTCCCACATGCCACAAGCCCACTTT  
 GCTGGCCAAGTTCAAGCAGCAGCATGAGGACAATAAGTACTTCTGGGCACACCAGTCTGGAGCCCGCC  
 TTCATCATCCAGCACTTCGCGGGCAGAGTGAATACCAGATCAAGGACTTCCGGGAGAAGAATGGACT  
 ACATGCGGCCTGACATCGTGGCACTGCTAAGGGCAGTGACAGCTCTATGTGCGCCAGCTATTGGCAT  
 GGACCCGGTAGCTGTGTTCCGCTGGCTGACTACGAGCAGCCATCAGGGCCATGGCTGTGCTGGGGAG  
 GCTGGGCCCTGCGTGCAGAGAGAGCGGAGAAGGCAGCAGGTATAAGTAGCCCTGCCACTCGAAGTCACA  
 TGGAAGAGCTACCAAGAGGAGCCAGTACCCCTTCAAAAAACTGTACCGGATTTGCATAACCAAATCAT  
 CAAGAGCCTCAAAGGACTGCCATGGCAGGGCGAGGACCCGAGGAGGCTTCTCCAGTCCCTCAGTCTGTTT  
 CAGAAGCCCCGCACCTCCTTCTGAAGAGTAAAGGTATCAAACAAAAGCAGATCATTCCCAAGAACCTGC  
 TGGACTCGAAGTCCCTGAGGCTCATCATCAGCATGACACTGCATGACCGAACTACCAAGTCACTGCTGCA  
 CCTGCACAAAAAGAAGACCACCTAGCATCAGTGCACAGTTCAGACATCTCTTAAAGCTGTTGGAG  
 GCACTGGGCAAGGCCGAGCCCTTCTTCCGCTGCATCCGCTCCAATGCCGAGAAGAAGGAACTTTGCT  
 TTGATGATGAAGTGGTGTGCAGCAACTGCGCTACACAGGCATGTAGAGACTGTGCGCATCCGACGCTC  
 TGCTACAGCGCAAGTACACCTTCCAGGACTTACGGAGCAGTTCAGGTGTTGCTGCCAAGGATGTC  
 CAGCCCTGTAGGGAGGCCATTGCTGCCCTGCTGGAGAAGCTGCAGGTGGACAGGCAGAATACCAGATTG  
 GAAAGACGAAGGTCTTCTGAAGGAGACAGAGCGTACAGCCCTGCAGGAGAAGCTGCATGGTGAGGTCTT  
 GCGTAGAATCCTGCAGCTGCAGAGTTGGTCCGTATGGTGTGGAACGCAAGCACTTTGTACAGATGAAG  
 CATGCTGCCTTGACCATCCAGGCCTGCTGGCGGTCTTACCGTGTGCGCGTGCCTGGAAGGACGCAAG  
 CAGCTGTGATACCTGCAGGCTGCCTGGAGGGCTACCTGCAGAGACAGGCCTACCACCACAGAGGCATAG  
 CATCATCCGCTGCAGAGCCTCTGCCGTGGCCACCTGCAGCGCAGGAGCTTCCAGCAGATGGTGTCCAG  
 AAGCAGAAGGCAGAGCAAGCCAGGGAGGCAGCAGGAGAAAGCTGTGAGGGGTGAGCCTGGCCCGTGG  
 CCGCTGGGGAGCAGTATCTGAGCACCTGTGGAAGACCCTGAGAGCCTGGGTGTGGAGGCTGAAACCTG  
 GATGAACAAGTCCCCAGACGGCATGTACCTAAGAAGGAGACACCCAGCCAGAGATGGAGACCGCAGCC  
 CAAAAGACAGTGCAGCTGAAAGTCATGAGAAAGTCTCCAGTAGCCGAGAGAAGCGAGAGTACGCGCGC  
 AACGAGGGTTGGAGCATGTTGAACGACAGAATAAACACATCCAATCCTGCAGGGAGGAGAGCAGCACCCA  
 CCGAGAACCTTCCAGAAGGGCAAGCCTGGAAATAGGGGAAAGCTTCCCTGAGGGCACAAGGGACCCAGA  
 GAAGATGGACTTGAGGCATGGACTGAGACCACAGCCCCCTCTAGTTCAAAGCAGGCACAGGTTGTGGGAG  
 ACCCACCTGGGAGTCCCAGTCCCCTGCAGAGGCCACCACCTGGCCCTAGACAGTAGGGTTAGCCCAAT  
 GCTCCCCAGCAGTCCCTGGAGGTTAGCCAGTGTCCCCAGCAGTCCCTGGAATCCCCAAAGATAAG  
 GACAAGGATGAGAGCAGCACCAAGGCTCAGGACAAGCCCGAGAGTCCCAGTGGCTCCACCAGATCCAAC  
 GATACCAACACCCAGACACAGAGCGGCTGGCCACTGCTGTAGAGATATGGCGAGGCAAGAAGCTTGCCAG  
 TGCCGTGCTGAGCCAATCCCTGGACCTGAGTGAGAAGCACCGGGCTACAGGGGCAGCCCTGACTCCCACA  
 GAGGAGAGGGCGCATCTCTTTCTCCACCAGTGACGTCTCCAAGCTGTCCCCAGTCAAGGTACAGACTTCA  
 CTGAAATCGATGGGGACTTTAGCAGCAAGAAGCCATCCATCCATAAGAAGAAGTCAAGGATCCATCCGC  
 TGGTCTGATGCAGGCCTGTCTCCAGGCTCCCAGGGTACTCTAAATCTGCATTTAAGCGGCTCTTCTG  
 CACAAAGCCAAGGATAAGAAGCCAGCCTGGAGGGTGTAGAGGAGACAGAGAGCAATGGAGGGCAGGCTG  
 CACAGGAGACCCCGCCAGGAAGACTCTAGACGTACCTTCTAGCCAGCAGCACCCGATACCAACAGGTGA  
 GAAGCCCCCTAAAAGGGAAGAAGAACCGAAATCGCAAAGTTGGCCAGATCACAGTGTCCGAGAAGTGGCGA  
 GAGTCAGTGTTCCGTAAGATCACTAATGCCAATGAGCTCAAGTTTCTGGACGAGTTCCTGCTCAACAAGG  
 TGAATGACCTTCGCTCACAGAAGACACCCATCGAAAGCTTGTTCAATTGAGGCCACTGAGCGCTTCAAGGAG  
 CAACATCAAGACCATGTATTCGGTGCCTAATGGGAAGTCCATGTAGGCTACAAGGACCTGATGGAGAAC  
 TACCAGATCGTTGTAGTAACTGGCTGCCGAGCGTGGGAGAAGGACACCAATCTGGTCTCAATGTCT  
 TCCAGTCACTGCTGGATGAGTTCACCCGACGTACAACAAGACTGACTTTGAGCGGGCCAAGCAGAGCAA  
 AGCCAGAGAAGAAGCGGAAGCAGGAGCGTGTCCAGGAACACAATGGACATGTGTTTGCCAGCTAC  
 CAGGTGAACATTCACAGTCATGTGAGCAGTGTCTGCTCCTACATCTGGCTCATGGACAAGGCTCTACTGT  
 GCAGTGTGTGAAGATGACCTGCCACAAGAAATGCGTGCACAAGATTGAGAGCTATTGCTCTACTGTTG  
 AAGGAGGAAGAGTGAAGTGGGTGCCGAACAGGCCACTTCGGTGTGTGTAGACAGCCTGACCAGTGAC  
 AAGGCCTCCGTGCCAATTGTGCTGGAGAAGCTTCTGGAACACGTAGAGATGCATGGCCTGTACTGAGG  
 GCCTTTACCGCAAGTCAAGGAGCTGCCAACCGGACAGGGAAATACGCCAGGCACTGCAGACAGACCCCTGC  
 TGCAGTTAAGCTGGAAGACTTCCCTATCCACGCTATCACCAGGCTTGAAGCAATGGCTTCGTGAGCTG

CCTGAGCCACTCATGACTTTTGCCAGTATGGAGATTTCTCAGGGCTGTTGAGCTTCCAGAGAAGCAGG  
 AGCAGTGTCTGCCATCTATGCAGTCTGGACCACCTGCCAGAAGCCAACCACACCTCCCTGGAGCGACT  
 CATCTTCCACCTTGTCAAAGTGGCCCTGCTTGAAGATGTGAACCGCATGTCTCCGGGAGCTCTAGCTATC  
 ATCTTTGCACCCTGCCTGCTTCGCTGCCCTGACAACTCCGACCCCTGACCAGCATGAAGGATGACTGA  
 AGATCACCACGTGTGGAGATGCTCATCAAAGAACAGATGAGGAAGTACAAGATGAAGATGGAGGAAAT  
 CAACCACCTGGAGGCTGCTGAGAGCATTGCATTCGCGAGGCTCTCCCTGTTGAGGCAGAAATGCTATCAA  
 AGCCCCAGGACCCAGTGGTCCAAGACCTGGAGCTGGGGGCTCTCCCGAGGAGGCTGCAGGTGGCGACG  
 AGGACCGAGAAAAGGAGATTCTCATGGAGAGGATCCAGTCCATCAAGGAAGAGAAGGAGGACATCACATA  
 TCGACTGCCGGAGCTGGACCCACGGGTTCTGATGAGGAGAACCCTTGACTCAGAGACATCGCCAGCACT  
 GAGAGCTGCTGGAGGAGAGGGGCTGCGGGGGCCGTGGAAGAG

ACGCGTACGCGGCCGCTCGAG – GFP Tag – GTTTAA

**Protein Sequence:**

>MG226344 representing NM\_001142323  
 Red=Cloning site Green=Tags(s)

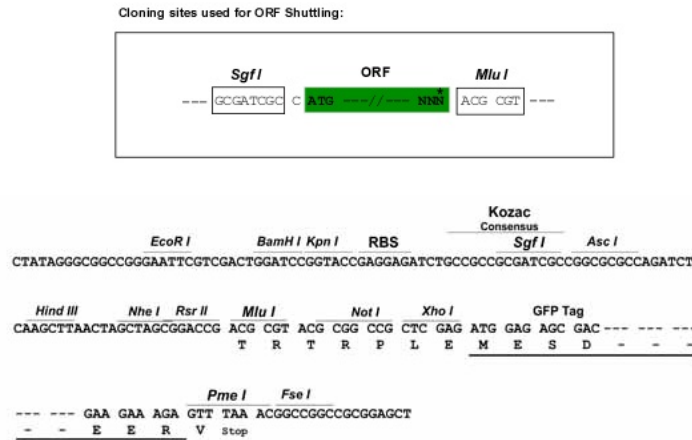
MSAHEAGSSGRRQQATYHLHIYPQLSSAGSQTSCRVTATKDDSTSDVIQDVVASLHLDGSKHYVLVEVKE  
 SGGEEWLDASDSPVHRVLLWPRRAQDEHPQEDGYFLLQERNADGSIQYLPQLLAQPTAACRLVERGL  
 LPRPQADFDDLCNLPTELTEANLLQNLKLRFMQQKIYTYAGSILVAINPFKFLPIYNPKYVKMYENQQLGK  
 LEPHVVALADVAYYAMLKRVNQCIVISGESGSGKTQSTNFLIHCLTALSQKGYASGVERTILGAGPVLE  
 AFGNAKTAHNNNSRFGKFIQVNYLENGIVRGAVVEKYLLEKSRLVSQEKDERNYHVFFYLLLVSEEEER  
 LEFQLKQPQDYFYLQHNLIENIEDGEDLKHDFERLQQAMEMVGFLPATKKQIFSVLSAILYLGNTVYKKRA  
 TGRDEGLEVGPEVLDLTSQLLKVKRETLVEVLTKRKTVTVNDKLLPYSLSEAITARDSMAKSLYSALF  
 DWIVLRINHALLNKDMEEAVSCLSIGVLDIFGFEDFERNFSFEQFCINYANEQLQYFYTFQHFIFKLEQEEY  
 QGEGISWHNIDYTDNVGCIHLISKKPTGLFYLLDEESNFPHATSHTLLAKFKQKHEDNKYFLGTPVLEPA  
 FIIQHFAGRVKYIKDFREKNMDYMRPDIALLRGSDDSSVYRQLIGMDPVAVFRWAFLRAAIRAMAVLRE  
 AGRLEAERAEAAGISSPATRSHMEELPRGASTPSEKLYRDLHNQIISLKLGLPWQGEDPRRLQSLSLF  
 QKPRTSFLKSKGIKQKIIPKNLLDSKSLRLIISMTLHDRTTKSLLHLHKKKKPPSISAQFQTSLNKLE  
 ALGKAEPFFIRCIRSNAEKELCFDDELVLQQLRYTGMLTVRIRRSYGSAKYTFQDFTEQFQVLLPKDV  
 QPCREAI AALLEKLQVDRQNYQIGKTKVFLKETERQTLQEKLHGEVLRRLILQLQSWFRMVLERKHFVQMK  
 HAALTIQACWRSYRVRALERTQAAYVLAARWGYLQRQAYHHQRHSIIRLQSLCRGHLQRRSFSQMVSE  
 KQKAEQAREAAAGGKLEGEPPVAAGEQLSEHPVEDPESLGVEAETWMNKSPDGMSPKKEPSPMETAA  
 QKTVPAESHEKVSSSREKRESRRQRGLEHVERQNKHIQSCREESSTHREPSRRASLEIGESFPEGTKGPR  
 EDGLEAWTETTAPSSSKQAQVVGDPGSPSPVQRPTTALDSRVSPMLPSSSLEVSPVLPSSSLES PKDK  
 DKDESSTKAQDKPESPGSTQIQRYQHPDTERLATAVEIWRGKKLASAVLSQSLDLSEKHRATGAALTPT  
 EERRISFSTSDVSKLSPVKVQTSAEIDGDFSSKKPSIHKKKSGDPSAGPDAGLSPGSQGDSKSAFKRFL  
 HKAKDKKPSLEGVEETESNGGQAAQETPARKTLDVPSSQQRHTTGEKPLKGGKKNRNRKVGQITVSEKWR  
 ESVFRKITNANELKFLDEFLLNKVNDLRSQKTPIESLFIATERFRSNIKTMYSPNGKIHVGYKDLMEN  
 YQIVVSNLAAERGEKDTNLVLNVFQSLDEFTRSYNKTDFERAKQSKAQKKRQKQERAVQEHNGHV FASY  
 QVNIPQSCQCLSYIWLMDKALLCSVCKMTCHKKCVHKIQSYCSYTGRRKSELGAEPGHFVGVCDVSLTSD  
 KASVPIVLEKLLHEVEMHGLYTEGLYRKS GAANRTRELQALQTDPAAVKLEDFPIHAITGVLKQWLREL  
 PEPLMTFAQYGDFLRAVELPEKQEQLSAIYAVLDHLPEANHTSLERLIFHLVKVALLEDVNRMSPGALAI  
 IFAPCLLRCPDNSDPLTSMKDVLIKITTCVEMLIKEQMRKYMKMEEINHLEAAESIAFRRLSLLRQNAIK  
 SPRTPVVQDLEL GALPEEAAGGDEDEKEILMERIQSIKEEKEDITYRLELDPDGRSDEENLDSETSAST  
 ESLLLEERGVRGAVEE

TRTRPLE – GFP Tag – V

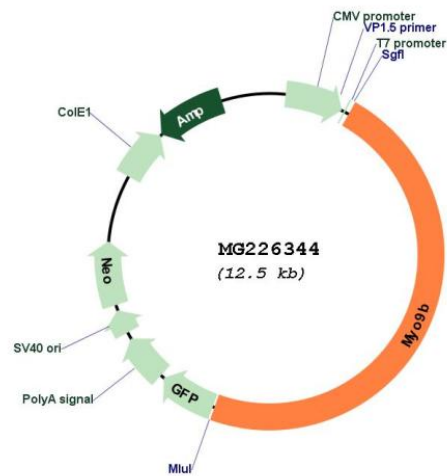
**Restriction Sites:**

Sgfl-Mlul

Cloning Scheme:



Plasmid Map:



ACCN: NM\_001142323

ORF Size: 5925 bp

OTI Disclaimer: The molecular sequence of this clone aligns with the gene accession number as a point of reference only. However, individual transcript sequences of the same gene can differ through naturally occurring variations (e.g. polymorphisms), each with its own valid existence. This clone is substantially in agreement with the reference, but a complete review of all prevailing variants is recommended prior to use. [More info](#)

<b>OTI Annotation:</b>	This clone was engineered to express the complete ORF with an expression tag. Expression varies depending on the nature of the gene.
<b>Components:</b>	The ORF clone is ion-exchange column purified and shipped in a 2D barcoded Matrix tube containing 10ug of transfection-ready, dried plasmid DNA (reconstitute with 100 ul of water).
<b>Reconstitution Method:</b>	<ol style="list-style-type: none"><li>1. Centrifuge at 5,000xg for 5min.</li><li>2. Carefully open the tube and add 100ul of sterile water to dissolve the DNA.</li><li>3. Close the tube and incubate for 10 minutes at room temperature.</li><li>4. Briefly vortex the tube and then do a quick spin (less than 5000xg) to concentrate the liquid at the bottom.</li><li>5. Store the suspended plasmid at -20°C. The DNA is stable for at least one year from date of shipping when stored at -20°C.</li></ol>
<b>RefSeq:</b>	<u><a href="#">NM_001142323.1</a></u> , <u><a href="#">NP_001135795.1</a></u>
<b>RefSeq Size:</b>	7142 bp
<b>RefSeq ORF:</b>	5928 bp
<b>Locus ID:</b>	17925
<b>Cytogenetics:</b>	8 34.43 cM