

## Product datasheet for **MG226337**

### Sh2d3c (NM\_013781) Mouse Tagged ORF Clone

#### Product data:

|                           |   |
|---------------------------|---|
| Product Type:             | Expression Plasmids                       |
| Product Name:             | Sh2d3c (NM_013781) Mouse Tagged ORF Clone |
| Tag:                      | TurboGFP                                  |
| Symbol:                   | Sh2d3c                                    |
| Synonyms:                 | Chat; Nsp3; Shep1                         |
| Mammalian Cell Selection: | Neomycin                                  |
| Vector:                   | pCMV6-AC-GFP (PS100010)                   |
| E. coli Selection:        | Ampicillin (100 ug/mL)                    |



[View online »](#)

**ORF Nucleotide Sequence:**

>MG226337 representing NM\_013781  
 Red=Cloning site Blue=ORF Green=Tags(s)

TTTTGTAATACGACTCACTATAGGGCGGCCGGAATTCGTCGACTGGATCCGGTACCGAGGAGATCTGCC  
 GCC**CGGATCGCC**

ATGACAGAGATGCCCAAGAAAACAGGCAGAAAAGTTCAAGTTCTTCAAGTTCAAGGCGCTTGGGAGCCTTT  
 CCAATCTCCCGCGTCTTTTCTCTGAGACGGTCTTCAAGCTCTGCTAGTATCCGGTCTTGTCCGGAGCC  
 TGACACCTTTGAAGCCACACAGGATGACATGGTGACACTCCCAAAGAGTCTCCTGCCTATGCACGTTCT  
 AGTGACATGTACAGCCACATGGGTACCATGCCCGCCCTAACATCAAGAAGGCTCAGAAAACAACAGGCTG  
 TCCAGAAGGCCAGGAGGTGAGCCGAGAGTGCACCTGGTTTCTCGAAGGCTGCCAGAGCCACCAGACTT  
 AGAGGCAGCCAAGGAGGCAGGGGAGGAACTGAAGCCCTACTGGAGGACACGGCACCTTCAGCAGTAGAA  
 GTGGACCTATGAGGGAAGTGGAGGATCTCACAGTAGACACAGAGAAGGAGCAAGTCCCTGGGGATGTGA  
 GCCCAGAAAGGACTGCTGCAGAGCTGGAGGCCGCTGGGGACTATGTGAAGTTCTCCAAGGAGAAGTACAT  
 TCTTGACTCCTCGCCAGAGAACTGCACAAGGAGCTGGAAGAGGAACTGAAGCTCAGCAGCACGGACCTC  
 CGTAGCCATGCCTGGTACCACGGACGCATCCCTCGTGAGGTCTCTGAGACTCTGGTGCAGCGGAACGGCG  
 ACTTCCTCATCCGAGACTCACTACCAGCCTAGGGGACTATGTGCTCACGTGCCGCTGGCACAATCAGGC  
 CTTGCACTTCAAGATCAACAAGGTGGTGGTGAAGGCCGGAGAGACTACACCCACATCCGGTACCTCTTC  
 GAGCAGGAGAGCTTCGACCACGTGCCTGCCCTCGTGCGCTACCACGTGGGAGCCGTAAGGCCGTGTCCG  
 AACAGAGCGGGGCTATCATCTACTGCCCTGTCAACCGCACCTTCCCACTGCGCTACCTCGAGGCCAGCTA  
 TGGCCTGAGCCAGGGCAGCAGCAAGACTGCCAGCCAGCCAGCCCTCAGGCTCCAAGGGCAGCCACATG  
 AAGAGGCGAAGCATTACCATGACTGATGGACTCACCACTGACAAGGTACCCGCAGCGATGGCTGCCCA  
 ACAGACCTCATTACCCATCCTCGAGACTCCATCCGAAACTGTGCCCTCAGCATGGACATGCCAGTCCGAG  
 TCTCCACTCACCCCTGTCTCTATCTCCGAGAGCCCCAGCTCTCCTGCCTATAGCACTGTAAACCCGAGTC  
 CACGCTCCTTCTGCCACCCCTCTACTTCAGCACAGCCTGCCTCCCCAGTTGCCCGCCGCTCCAGCGAAC  
 CTCAGCTATGTCTGAAATACTCCAAAGCCTCCTGGGAGTCAAGACAGGGCCCTCACGCAAGCCCATC  
 CCACACCCCTGCAAGGCCTCGCCATCACCATCACTCAGCAGCTACAGTGACCCGGACTCTGGTCACTAC  
 TGTGAGCTCCAGCCTCCGGTCCGTGGCAGCCGAGAGCAGGCCGAGGAGACTCCCCGGAAGGCTAGGG  
 GCTCCGGAGAGAGGCAAAGGAACTGTTAGAAAATGGAGTCTCTGACGGGAGTGGGGCAAGACCTTAC  
 AGTCCCTGTAGTAGAAGCCACCTCCTCTTCAACCTGGTACCTCCAGTCCCAGCTGATCCCCAAGGAG  
 AACCGGCCTCTGGAGGTGCCCTTCTGCGCAAGGTCAAGGAGCTGCTGTCTGAGGTGGATGCCCGGACAC  
 TGGCCCGCATGTACCAAGGTTGACTGCCTGGTTGCTAGGATACTGGGGTTACCAAGGAGATGCAGAC  
 CCTAATGGGAGTCCGCTGGGCAATGGAGCTGCTCACCTCCCCATGGCCGGCAGCTACGACTAGACCTG  
 CTGAAAGGTTCCACACCATGTCCATCATGCTGGCAGTGGATATCCTGGGCTGCACAGGCTCGGCGGAGG  
 AGCGGGCAGCTCTGCTGCACAAGACCATACAGTGGCGGCCGAGCTGCGGGGACGATGGGAACATGTT  
 CAGCTTCGCCGCTGTATGGGCGCCCTGGAGATGGCCAGATTTCAAGGCTGGAGCAGACATGGATGACC  
 CTGCGACAGCGACACACGGAGGGTGCCATTCTGTACGAGAAGAAGCTCAAGCCTTTCCTCAAGAGCCTGA  
 ACGAGGGCAAAGAAGGCCACCGCTGAGCAACACCACGTTTCCACACGTACTTCTTTTATTACTCTGCT  
 GGAATGTGACTCTGCCCCCGCAGGGTCTGAACTTGGGGCAGCACAGAACACGGTGTGGAGGTTGTG  
 CTAGCCACCTGGAGGCCGCCGCACTGTGGCCACCACGGGGGCTCTACCACACCAACGCTGAGGTCA  
 AGCTGCAAGGTTCCAAGCCGACCGGAGCTCCTGGAAGTATTACGACAGAGTTCAGATGCGGCTCCT  
 CTGGGGCAGCCAGGGTGCCAACAGCAGCCAGCCCTGGCGCTATGAGAAGTTTGACAAAGTCTCACTGCC  
 TTGTCCACAAGCTGGAACCTGCCATCCGCTCTAGCGAGCTG

**ACCGTACGCGGCCGCTCGAG** - GFP Tag - GTTTAA

**Protein Sequence:** >MG226337 representing NM\_013781  
 Red=Cloning site Green=Tags(s)

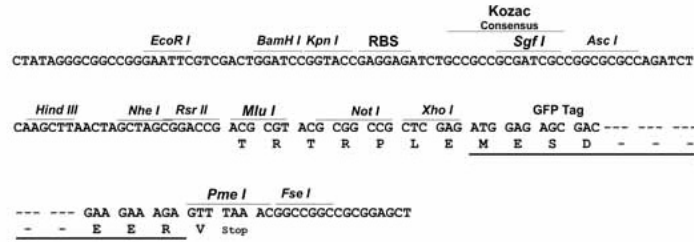
MTEMPKKTGRKFKFFKFKGLGSLSNLPRSFSLRRSSASASIRSCPEPDTFEATQDDMVTLPKSPPAYARS  
 SDMYSHMGTMPRPNIKKAQKQQAVQKAQEVSRSHLVSRRLEPPDLEAAKEAGEGTEALLEDTAPSAVE  
 VDPMRELEDLTVDEKEQVPGDVSPERTAAELEAAGDYVKFSKEKYILDSSPEKLHKELEEEELKLSSTD  
 RSHAWYHGRIPREVSETLVQRNGDFLIRDLSLTSGLDYVLTWRWHNQALHFKINKVVVKAGESYTHIRYLF  
 EQESFDHVPALVRYHVGSRKAVSEQSGAIIYCPVNRTFPLRYLEASYGLSQGSSKTASPSPSGSKGSHM  
 KRRSITMTDGLTTDKVTRSDGCPNSTSLPHPRDSIRNCALSMDQIPDLHSPLSPISESPSSPAYSTVTRV  
 HAPSATPSTSAQPASPVARRSSEPQLCPGNTPKPPGESDRAPHASHTLCKASPSLSYSDPDSDGHY  
 CQLQPPVRSREQAAGETPRKARGSGERQKELLENGVSDGEWGKFTVPVVEATSSFNLATFQSQLIPKE  
 NRPLEVALLRKVKELLSEVDARTLARHVTKVDCLVARILGVTKEMQTLMGVWRWGMELLTLPHGRQLRLDL  
 LERFHTMSIMLAVDILGCTGSAEERAALLHKTIQLAELRGTMGNMFSFAAVMGALEMAQISRLEQTWMT  
 LRQRHTEGAILYEKKLKPFLKSLNEGKEGPPLSNTTFPHVLPFITLLECD SAPAEGPEPWGSTEHGVEVV  
 LAHLEAARTVAHHGGLYHTNAEVKLQGFQARPELLEVFSTEFQMRLLWGSQGANSSQAWRYEKFDKVLTA  
 LSHKLEPAIRSSEL

TRTRPLE - GFP Tag - V

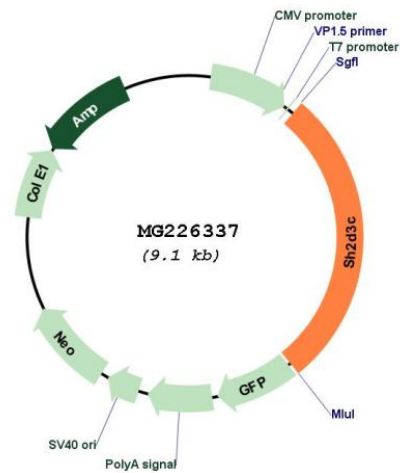
**Restriction Sites:** Sgfl-MluI

Cloning Scheme:

Cloning sites used for ORF Shutting:



Plasmid Map:



|                               |   |
|-------------------------------|---|
| <b>ACCN:</b>                  | NM_013781   |
| <b>ORF Size:</b>              | 2562 bp   |
| <b>OTI Disclaimer:</b>        | The molecular sequence of this clone aligns with the gene accession number as a point of reference only. However, individual transcript sequences of the same gene can differ through naturally occurring variations (e.g. polymorphisms), each with its own valid existence. This clone is substantially in agreement with the reference, but a complete review of all prevailing variants is recommended prior to use. <a href="#">More info</a>  |
| <b>OTI Annotation:</b>        | This clone was engineered to express the complete ORF with an expression tag. Expression varies depending on the nature of the gene.  |
| <b>Components:</b>            | The ORF clone is ion-exchange column purified and shipped in a 2D barcoded Matrix tube containing 10ug of transfection-ready, dried plasmid DNA (reconstitute with 100 ul of water).  |
| <b>Reconstitution Method:</b> | <ol style="list-style-type: none"><li>1. Centrifuge at 5,000xg for 5min.</li><li>2. Carefully open the tube and add 100ul of sterile water to dissolve the DNA.</li><li>3. Close the tube and incubate for 10 minutes at room temperature.</li><li>4. Briefly vortex the tube and then do a quick spin (less than 5000xg) to concentrate the liquid at the bottom.</li><li>5. Store the suspended plasmid at -20°C. The DNA is stable for at least one year from date of shipping when stored at -20°C.</li></ol> |
| <b>RefSeq:</b>                | <a href="#">NM_013781.2</a> , <a href="#">NP_038809.1</a>   |
| <b>RefSeq Size:</b>           | 3105 bp   |
| <b>RefSeq ORF:</b>            | 2565 bp   |
| <b>Locus ID:</b>              | 27387   |
| <b>UniProt ID:</b>            | <a href="#">Q9QZS8</a>  |
| <b>Cytogenetics:</b>          | 2 B   |
| <b>Gene Summary:</b>          | Eph receptor-binding protein which may be a positive regulator of TCR signaling. Binding to BCAR1 is required to induce membrane ruffling and promote EGF-dependent cell migration. [UniProtKB/Swiss-Prot Function]   |