

Product datasheet for **MG226327**

Fgf4 (NM_010202) Mouse Tagged ORF Clone

Product data:

Product Type: Expression Plasmids
Product Name: Fgf4 (NM_010202) Mouse Tagged ORF Clone
Tag: TurboGFP
Symbol: Fgf4
Synonyms: Fgf-4; Fgfk; HBGF-4; hst; hst-1; Hst1; Hstf-1; kFGF; KS3
Mammalian Cell Selection: Neomycin
Vector: pCMV6-AC-GFP (PS100010)
E. coli Selection: Ampicillin (100 ug/mL)
ORF Nucleotide Sequence: >MG226327 representing NM_010202
Red=Cloning site Blue=ORF Green=Tags(s)

TTTTGTAATACGACTCACTATAGGGCGGCCGGAATTCGTCGACTGGATCCGGTACCGAGGAGATCTGCC
GCC**CGATCGCC**

ATGGCGAAACGCGGGCCGACCACAGGGACGCTGCTGCCAGGGTCTGCTGGCCCTGGTGGTGGCCCTGG
CGGACCGAGGGACCGCCGACCCAACGGCACGCGGCAGCAGAATTGGGGCACGGCTGGGACGGCTTGGT
GGCCCGCTCGTGGCACGCTGCCGGTGGCCGCGCAGCCCCGAGGCGGCGGTCCGACGGCGCAGGG
GACTACCTGCTGGGCTCAAAGGCTTCGGCGGCTCTACTGCAACGTGGGCATCGGATCCACCTGCAGG
TGCTGCCCAGCGCCGCATCGGTGGTGTGCACGCAGACAGGGACAGTCTTCTGGAGCTCTCTCCGGT
GCAGCGAGGCGTGGTGGATCTTCGGAGTGGCCAGCCGTTCTTCGTGGCCATGAGCAGAGGGGCAAG
CTTCTCGGTGTGCCTTTCTTTACCGACGAGTGTAAATCAAAGAAATACTTCTGCCCAACAATAACAACG
CCTACGAATCCTACGCGTACCCCGGTATGTTTCATGGCCCTCAGTAAGAACGGGCGGACCAAGAAGGGGAA
CCGAGTGTGCGCTACCATGAAGTAACCCACTTCTTCTAGACTG

AC**CGGCCGCTCGAG** - GFP Tag - GTTTAA

Protein Sequence: >MG226327 representing NM_010202
Red=Cloning site Green=Tags(s)

MAKRGPTTGTLPRVLLALVVALADRGTAAPNGTRHAELGHGWDGLVARSLARLPVAAQPPQAAVRSAG
DYLLGLKRLRRLYCNVIGIFHLQVLPDGRIGGVHADTRDLSLELSPVQRGVVSIIFGVASRFFVAMSSRGK
LFGVPPFTDECKFKEILLPNNYAYESYAYPGMFMALSKNGRTKKNRVSPMTMKVTHFLPRL

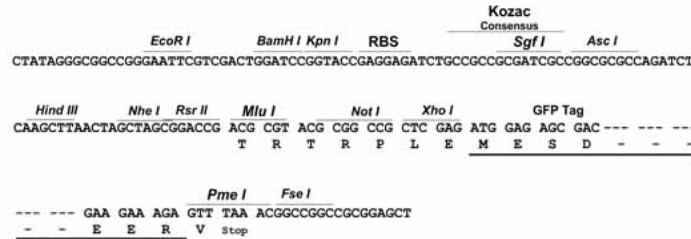
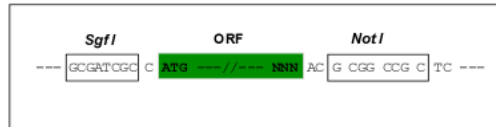
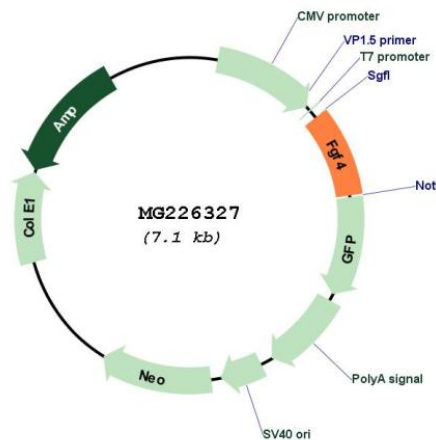
TRPLE - GFP Tag - V

Restriction Sites: SgfI-NotI



Cloning Scheme:

Cloning sites used for ORF Shutting:


Plasmid Map:

ACCN: NM_010202

ORF Size: 606 bp

OTI Disclaimer: The molecular sequence of this clone aligns with the gene accession number as a point of reference only. However, individual transcript sequences of the same gene can differ through naturally occurring variations (e.g. polymorphisms), each with its own valid existence. This clone is substantially in agreement with the reference, but a complete review of all prevailing variants is recommended prior to use. [More info](#)
OTI Annotation: This clone was engineered to express the complete ORF with an expression tag. Expression varies depending on the nature of the gene.

Components: The ORF clone is ion-exchange column purified and shipped in a 2D barcoded Matrix tube containing 10ug of transfection-ready, dried plasmid DNA (reconstitute with 100 ul of water).

Reconstitution Method:

1. Centrifuge at 5,000xg for 5min.
2. Carefully open the tube and add 100ul of sterile water to dissolve the DNA.
3. Close the tube and incubate for 10 minutes at room temperature.
4. Briefly vortex the tube and then do a quick spin (less than 5000xg) to concentrate the liquid at the bottom.
5. Store the suspended plasmid at -20°C. The DNA is stable for at least one year from date of shipping when stored at -20°C.

RefSeq: [NM_010202.6](#)

RefSeq Size: 3030 bp

RefSeq ORF: 609 bp

Locus ID: 14175

UniProt ID: [P11403](#)

Cytogenetics: 7 88.88 cM

Gene Summary: Plays an important role in the regulation of embryonic development, cell proliferation, and cell differentiation. Is essential for survival of the postimplantation mouse embryo. Required for normal limb and cardiac valve development during embryogenesis.[UniProtKB/Swiss-Prot Function]