

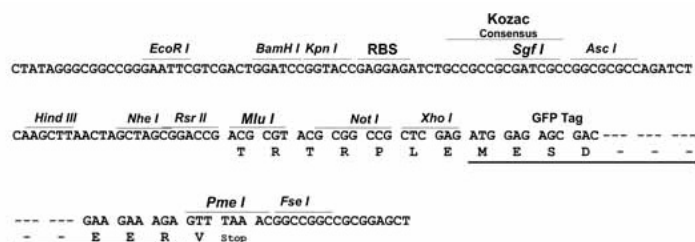
Product datasheet for MG226315

Clock (NM_007715) Mouse Tagged ORF Clone

Product data:

Product Type:	Expression Plasmids
Product Name:	Clock (NM_007715) Mouse Tagged ORF Clone
Tag:	TurboGFP
Symbol:	Clock
Synonyms:	5330400M04Rik; KAT13D
Mammalian Cell Selection:	Neomycin
Vector:	pCMV6-AC-GFP (PS100010)
E. coli Selection:	Ampicillin (100 ug/mL)
Restriction Sites:	SgfI-MluI
Cloning Scheme:	

Cloning sites used for ORF Shuttling:



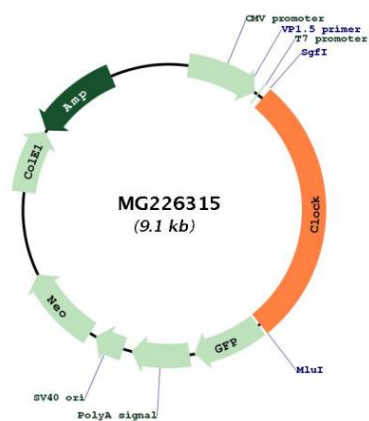
ACCN:	NM_007715
ORF Size:	2565 bp



[View online »](#)

OTI Disclaimer:	The molecular sequence of this clone aligns with the gene accession number as a point of reference only. However, individual transcript sequences of the same gene can differ through naturally occurring variations (e.g. polymorphisms), each with its own valid existence. This clone is substantially in agreement with the reference, but a complete review of all prevailing variants is recommended prior to use. More info
OTI Annotation:	This clone was engineered to express the complete ORF with an expression tag. Expression varies depending on the nature of the gene.
Components:	The ORF clone is ion-exchange column purified and shipped in a 2D barcoded Matrix tube containing 10ug of transfection-ready, dried plasmid DNA (reconstitute with 100 ul of water).
Reconstitution Method:	<ol style="list-style-type: none"> 1. Centrifuge at 5,000xg for 5min. 2. Carefully open the tube and add 100ul of sterile water to dissolve the DNA. 3. Close the tube and incubate for 10 minutes at room temperature. 4. Briefly vortex the tube and then do a quick spin (less than 5000xg) to concentrate the liquid at the bottom. 5. Store the suspended plasmid at -20°C. The DNA is stable for at least one year from date of shipping when stored at -20°C.
Note:	Plasmids are not sterile. For experiments where strict sterility is required, filtration with 0.22um filter is required.
RefSeq:	NM_007715.6
RefSeq Size:	7478 bp
RefSeq ORF:	2568 bp
Locus ID:	12753
UniProt ID:	O08785
Cytogenetics:	5 40.63 cM
Gene Summary:	The protein encoded by this gene plays a central role in the regulation of circadian rhythms. The protein encodes a transcription factor of the basic helix-loop-helix (bHLH) family and contains DNA binding histone acetyltransferase activity. The encoded protein forms a heterodimer with Arntl (Bmal1) that binds E-box enhancer elements upstream of Period (Per1, Per2, Per3) and Cryptochrome (Cry1, Cry2) genes and activates transcription of these genes. Per and Cry proteins heterodimerize and repress their own transcription by interacting in a feedback loop with Clock/Arntl complexes. Polymorphisms in this gene may be associated with behavioral changes, obesity, and metabolic syndrome. Two transcripts encoding the same protein have been found for this gene. [provided by RefSeq, Jan 2014]

Product images:



Circular map for MG226315