

Product datasheet for **MG226296**

Colq (NM_009937) Mouse Tagged ORF Clone

Product data:

Product Type:	Expression Plasmids
Product Name:	Colq (NM_009937) Mouse Tagged ORF Clone
Tag:	TurboGFP
Symbol:	Colq
Synonyms:	A130034K24Rik
Mammalian Cell Selection:	Neomycin
Vector:	pCMV6-AC-GFP (PS100010)
E. coli Selection:	Ampicillin (100 ug/mL)



[View online »](#)

ORF Nucleotide Sequence:

>MG226296 representing NM_009937
 Red=Cloning site Blue=ORF Green=Tags(s)

TTTTGTAATACGACTCACTATAGGGCGGCCGGGAATTCGTCGACTGGATCCGGTACCGAGGAGATCTGCC
 GCC**CGGATCGCC**

ATGGTGGTCTGAATCCAATGACTTTGGGAATTTATCTCCAACCTTTCTTCTGCTCCATCGTGTCTCAGC
 CAACTTTTCATCAACAGTGTGGTCCCAATCTCAGCAGCCCTTCTGGCCTGGATCAGAAGAAGCGGGCAG
 CCACAAAGCATGCTGCCTACTCATGCCCCACCGCCCACTCTCCACCGCCGTTCTTTCAGAGGCAGC
 CGGAGCCCGCTTCTCTCCCAGACATGAAGAACCTTCTGGAACCTGAGGCGTCACCATCACCTGCATTC
 AAGGCTCGCTCGGCTCTCTGGGCCCTGGGCCAGGGTCCACCTGGGCTTCTGGCAAGACAGGACC
 AAAGGGAGAAAAGGGGGACCTTGGCCGCCAGGAAGGAAGGTAGACCTGGACCCCAAGTGTCTCTGGC
 ATGCTGGGCCGTTGGCTGGCCAGGCCCTGAAGGACCCAGGGGTAAAAAGGTGACCTGGGTATGATGG
 GCCTGCCGGGTCAAGAGACCGATGGGCTTAAGGGTTCCCTGGATCCAGAGGGGAAAAGGGATCCAG
 AGGTGAAAGGGGTGACTTGGGTCCAAAGGAGAAAAGGGTTCCCTGGGTTTCTGGAATGCTGGGGCAG
 AAAGGTGAAATGGGTCCAAGGGAGAGTCTGGGCTGGCAGGACACCGAGGCCCCACAGGAAGACCAGGAA
 AACGAGGCAAGCAGGGTCAGAAGGGAGACAGTGAATTATGGGCCACACAGGCAAGCCTGGGCCTTCTGG
 TCAACCTGGCCGTCAAGTCTCCAGGGCCCCAGGCCACCATCTGCAGGACAATTGTAATGGGACTC
 AAAGGGGAAAAGAGGATTTCCAGGGCCTCCAGGAAGATGCCTTGGCGACCCCTGTGAATGTGAATAACC
 CCTCTACGGGGACTCCATGTATGGCGTGGCTCCCCTCGAGTTCCTGCGATTTTGTGGTCAACAACCA
 GGAAGAGCTTGAGAGGCTGAACACTCAGAATGCCATTGCCTTTCGAAGAGACCAGCGATCTTTGACTTC
 AAAGATAGCCTTGGCTGGCTCCCATCCAGCTCACCCCTTCTACCCTGTGGTTACACCGTGAAGCAGC
 CTGGCACCTGCGGGGATGGAGTCTGCAGCTGGGGAAGAGTGTGATGATGGTAATCCCAGTGTGAGTGA
 TGGCTGCATCGACTGTATCGGGCCTACTGTGGAGACGGTTACCGCACACAGGGCGTGGAGGACTGTGAC
 GGCTCTGACTTTGGCTACCTGACATGCGAGACCTATCTCCTGGATCATACGGAGACCTTCGGTGCACCC
 AGTACTGCTCCATCGACTCCACACCCTGCCGCTACTTCAGC

ACGCGTACGCGGCCGCTCGAG - GFP Tag - GTTTAA

Protein Sequence:

>MG226296 representing NM_009937
 Red=Cloning site Green=Tags(s)

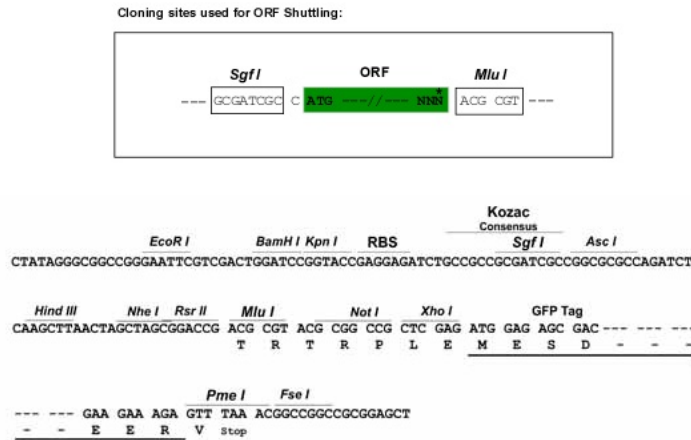
MVVLNPMTLGIYLQLFFCSIIVSQPTFINSVVPISAALPGLDQKKRSHKACLLMPPPPPLFPPPPFRGS
 RSPLLSPDMKNLLELEASPSPCIQGLSGSPGPPGPPGLPGKTGPKGEKGDGRPRGRGPPGVPVPG
 MPGPVWPGPEGPRGEKGDLMGMLPGSRGPMGSKGFPGSRGEKGSRGGERGDLGPKGEKGFPGPMLGQ
 KGEMGPKGESLAGHRGPTGRPGKRGKQKQKGD SGIMGPPGKPGPSGQPGRQGP GPPGPPSAGQLVMGL
 KGERGFPGPPGRCLCGPPVNVNNSYGD SMYGRGSPRVP AIFVNNQEELEERLNTQNAIAFRRDQRSLYF
 KDSLGLWLP IQLTPFYYPVGYTVKQPGTCGDGVLQPGEECDGNDVSDGCIDCHRAYCGDGYRHQGVEDCD
 GSDFGYLTCETYLPGSYGLRCTQYCSIDSTPCRIFYT

TRTRPLE - GFP Tag - V

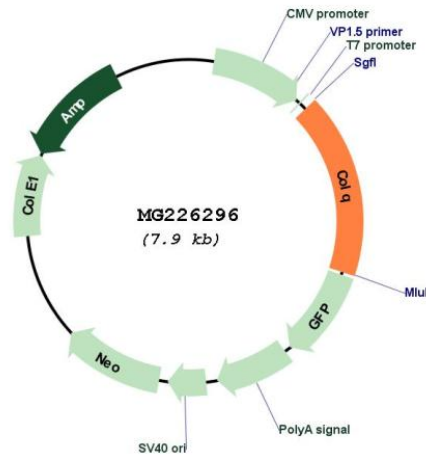
Restriction Sites:

SgfI-MluI

Cloning Scheme:



Plasmid Map:



ACCN: NM_009937

ORF Size: 1371 bp

OTI Disclaimer: The molecular sequence of this clone aligns with the gene accession number as a point of reference only. However, individual transcript sequences of the same gene can differ through naturally occurring variations (e.g. polymorphisms), each with its own valid existence. This clone is substantially in agreement with the reference, but a complete review of all prevailing variants is recommended prior to use. [More info](#)

OTI Annotation: This clone was engineered to express the complete ORF with an expression tag. Expression varies depending on the nature of the gene.

Components:	The ORF clone is ion-exchange column purified and shipped in a 2D barcoded Matrix tube containing 10ug of transfection-ready, dried plasmid DNA (reconstitute with 100 ul of water).
Reconstitution Method:	<ol style="list-style-type: none">1. Centrifuge at 5,000xg for 5min.2. Carefully open the tube and add 100ul of sterile water to dissolve the DNA.3. Close the tube and incubate for 10 minutes at room temperature.4. Briefly vortex the tube and then do a quick spin (less than 5000xg) to concentrate the liquid at the bottom.5. Store the suspended plasmid at -20°C. The DNA is stable for at least one year from date of shipping when stored at -20°C.
RefSeq:	<u>NM_009937.2</u> , <u>NP_034067.2</u>
RefSeq Size:	2835 bp
RefSeq ORF:	1374 bp
Locus ID:	382864
UniProt ID:	<u>O35348</u>
Cytogenetics:	14 B
Gene Summary:	Anchors the catalytic subunits of asymmetric AChE to the synaptic basal lamina. [UniProtKB/Swiss-Prot Function]