

## Product datasheet for **MG226285**

### Pappa2 (NM\_001085376) Mouse Tagged ORF Clone

#### Product data:

Product Type:	Expression Plasmids
Product Name:	Pappa2 (NM_001085376) Mouse Tagged ORF Clone
Tag:	TurboGFP
Symbol:	Pappa2
Synonyms:	PAPP-A2; Papp; PLAC3
Mammalian Cell Selection:	Neomycin
Vector:	pCMV6-AC-GFP (PS100010)
E. coli Selection:	Ampicillin (100 ug/mL)
ORF Nucleotide Sequence:	>MG226285 representing NM_001085376 Red=Cloning site Blue=ORF Green=Tags(s)

TTTTGTAATACGACTCACTATAGGGCGGCCGGAATTCGTCGACTGGATCCGGTACCGAGGAGATCTGCC  
GCC**CGATCGCC**

ATGATGTGTTGGAAGGTCTGAGAATAAGCCTGGTGGTCTGACTGGGTGGGCACTCAGTACCACCAACT  
CAGAGCAGGGCTGGACACGCAAGAAATTCCTGGCCAGAAGAACACCTGAACCAAGTGTGTTGGAAGG  
GGAACGCTGTTGGCTGGGTATAAGGTTCAAGACCCAGGACTGCTCCACAGCACCATCTCTTTGGGGTC  
TACCCAAGCCGCCTCGAAAACACCAAGGTCCTATCCTGTGGGACACAGCAGCAAACCTGTATGCAG  
AATGGAGTCAGCGAAGCCAGAGAGACAGGCTCCGAGTGGTATTCCTCCGAGACCTGACTGAAAACCCAGC  
AGGAGCAAGGAGAGAGTCTCAGCAGCCAGCTGCCCGTGGTAGGGGATGGTCTATTGGCAATCGCAG  
CTGCTGAGAAATGATGACTTATCTTGCCGAGGGAGGATCTAAGGAGGCTCTAGGTGAGCCTGCGATTC  
AGGGAAGCTCAGAAATGCTGTCTCCACATTGCTACCTTCGCATATCAGAAGGGACCCACAGCAGAGAC  
CCAGAGGAAGGGCCAGTCCAAGTCTAGGCTTCCTCGCCAAGTGCAGAAGAGGCAGGCAGAAGACATGACT  
GGAGACCCCAAGTCAAGGTTCCAGCTTTGGCCTAAAGAGCCACTTAAGCATGGAGATAGTG  
ACAGTCCATTGGAGGGCACCATCCAAAATGGTGGAGGGGCTCTCTCCGAGAGTAGAGACCTTTAACTC  
CCAAGGAGGATTGCCTGTACTGTATTTCACTGGGAAGAGGGAGCGGCTGTTGCTGCGTCCAGAAGTGTG  
GCTGAGATTCCTCCGGGAGCGTTACAGTGGAAAGCCTGGGTGAGACCAGAGGGAGCAGAGCAACCCAG  
CCATCATTGCAGGTGTGTTGATAACTGCTCCACACAGTCAATGACAAGGCTGGGCCCTGGGGATCCG  
CTCAGGGAAGGACAAGGGGTGGAGAGATGCTCGTTCCTTTTCCCTCCGCACTGACCGGATGAAGAAA  
GCCACTATTGTGACTGGCCACAGCCGTTACCAGCCAGGCATGTGGACTCATGTAGCAGCCACTTACGATG  
GACAGCATACAGCTCTGTATGTGGATGGCACTCGAGTGGCTAGTAGTCGTGACCAGTTTGGACCGCTAAA  
TAGCCCTTTCATGGCGTCTTGCCGCTCTTAACTCCTGGGAGGGGACAGCTCCGAGGATGGACATTATTC  
CGTGGTTACCTGGGCACACTGGTAATCTGGTCGACCGCCCTTTCACAAACCCACCTCCAGCACAGTCCCC  
TGCATCCAAGTGCAGCAGATGAGTTGACCACCTGATCCTGACAGCCACTTTCGATCCTCTGATGGAACA  
GTGGGCTCCATTTAGAGATGACTTATATCCCGGCTGGAGGTTCTCCAGGACTCTGAGTCACAGCCTGAG



[View online »](#)

ATTCTGTACCTTTACAACCCACCTTGTGGGCAAACAGCTTGTGACAATGTGGAACATCTCCCACT  
 ACAATAAGCATGGGCCCTTCGTAGAGAGAAAGTGATCCGCTACCAGGTGGTAAACATCTATGATGATGA  
 GGGTCTGCATCCCATTTGTGAGTGATCATCAGATCCGCCGTGAGTCCAGTCCCAACTCCACCCTGCCACC  
 CGCTACAATATCAGCTGGCAGCTGAGTGTCCACCGAGTCCACAACCTCCACCCTGCCACC  
 TTGTTAATTGTGAGCCCAGCAAGATTGGCAATGACCACTGTGACCCTGAATGTGAGCATCCACTCACC  
 GTTCCGATGGGGCGATTGCCCTGCAGGACGCTGCTACTCTGGAATCGCAGGGATGGCTCTGTAC  
 GTGGAGTGCAACAACATGCTGAATGACTTCGATGATGGAGACTGCTGCGATCCGGAAGTGACTGATGCC  
 GAAAGACTTGCTTGTGCTGACTCACCAAGAGGGCATACATGAGTGTGAAGGAACTAAAGGAGGCCCT  
 GCAGCTCAACAGCACTCACTTCTTAATGTCTACTTCGCCAGCTCAGTCCGGGAAGACCTTGCAGTTCT  
 GCCACATGGCCCTGGGACAAGGAAGCTCTCAGTCACTGGGTGGTGTGCTCAACCAACCTATTATG  
 GCATGCTTGGCCACCAACATCATGATCCATGAGGTGGGACATGCTCTGGGACTCTACCATGATTCAA  
 AGGAGTCAGTGAAGAGAATCCTGTGATGATCCCTGTAGAGAGACAGTCCATCCATGGAGACAGGAGAC  
 CTGTGTGCTGACTGCTCCACACCAAGAGCAAGCTGTGTCGGGACCCAGAGCCAGCTAATGACACCT  
 GTGGCTTACCCTCTCCAGGGCTCCGTTCAATAACTACATGAGCTACACAGATGATGAGTGCACCTGA  
 CAACTTACCCTAACCAGTGGCCGGATGCATTGCTACTTGGACCTCGTATACCAGCAATGGAGTGAA  
 AGCCAAAAACCTACCCCATACCCATACCCCATGGTTATTGGGCAAACCCACAAGTCCCTTACTATCC  
 ATTTGGCTGCCTCAATCAGTGGAGTTGTGTATGATAGGGCCCTGACAGCATGTGTAGTGCCTGCACTGA  
 AGATGGGACATTCGTCAGTATGTATACAAGGCATCCTCTGGGCGGTGTGTGACTCTTACAGTTACTGG  
 ACTCCAGAGGAGGCTGTGGGCCCTCCTGATGTCGATCAACCTGTGAGCCTAGCTTGCAGGCCTGGAGTC  
 CTGAGCTCCACCTAAACCACATGAATATGACCGTGCCTGCCAGCAGAAAGGCTGTAGCTTGGAGTTGCT  
 TTTTCAATACCCGGTCCAGGCGGATACCCTCACCTCTGGGTCACTTACCTCTCCATGAACCTTTCCAAG  
 GCATTCTTTGACATAGAGATCTTGTCTAGAACAACAAAAATCTATGCACCTTGGACCTTTAAACACTTTT  
 GTGACATACCGCTCACCATCAAACCTCCACATGGATGAGAAGGTCATGGAGCGAAAGTCTACACCTTTGA  
 TGACGAATGGAATGATGCTGCTCTCCTGACCTCTCGCCCAATAGTTCCTTGTGTTCTGGATGCAAG  
 CCTATGAGTTACCAGTTCTTCGAGAGCCTCCTTTTTCCAGTGGCTTGGCCATGGTGGTACACATCCAC  
 ACAGAAAGTTCACAGATACGGAGGTATCCCTGGGACAGATGTATCAGTACCAAGTTCAAGCTGAAGCTGT  
 AGGGGAACTCGGAGAAGCTTACCTCCTCTGAGCCACATTCACGGAGGCCCTTACTGTGGAGATGGGAAG  
 GTAGAAAGGAGTATCGGAGAGATGTGTGATGATGGAGACCTGTTGAATGGAGATGGGTGCTCAAGAGCAT  
 GTGAACGGAGGAAGGCTTCAATTTGTCAGGGGAGCCAGCCTTGTACAGGTATGAGGGAGATGGGGT  
 TTGTGAAGATTTGAGAAGGAAAGCATCATCACAGACTGTGCCCTCCACACTCCTGAAGGATATTTGGAT  
 CAGTGGGTAGCCAGGCTTATTCCTACCATGAAGACAAGGAGAAATGTCCTGTTTCCCTGGTAACAGGAG  
 AACCTCATTCAATGATCTGTACTTCATGGCACCAGGATTCATCCCATATCATTCTTCCCTGGCTGGTT  
 TCCTGTGTCTTCACTCTGAAGAAAGACCAGGATGCAGGCAGTGAGCAGGCTAAAGATAGCTGCAGAAG  
 GACAATGAAATTTGGCTTGAAGTGTGTTTCAATAGGCCAGGGGTTGCAGTGGCAATTTACATTTTCTTGG  
 CATCGGATGGCGTGACCCCTGGGAGCATCAGCAGGCAACAGTGACCCCTTACCTGATTGATGTCAGTGG  
 AAGCAACCACTCTCTTGGAACTATGGACTGTCGTGTCAACAAAAATCCACTGGTTATCAATGTGAGCCAT  
 CATGTGAATGTCTACCCCAACATACCTCCTCCATGCTGCTGAATTTTTCATCCCCACTGGTGGGCATCT  
 CAGCAGTGGCTTAAGGACATCCTCCAGACCAGTTCCTCAGCTCCAGTAACTGCATCCAGAGCAAAA  
 TTATGAGGGAAGAGCTGTGCTCAACGACCTTGTGGAGAACAGGGAAGATGTGCGCCATTGCTACTCGAT  
 CATACGGACATGGTGAATGTACCTCCAGTAGCCAGGTACATGGAGTGCCTATCACTTGTCAAAGGG  
 GGTATGCTCTCAGACCAGCAGTGGGCAGTACCTGAGGAACATGCAGAAAGAGATTCTCCTTACTTGTT  
 CTCTGGCCACTGGGACAAGGATGTGATCTGCAAGCGTCTTACTGTGGTGTCCCAGACTCCTCCTGGTG  
 AATTATGCAAACCTCTCCTGCTTGGAGGTACAGACTTCTGAAACAATGTTCCATCTCGTGTGCTCCAC  
 CGGCTAAGCTCCAAGGACTGAACCCATGGCTGACATGCTTGAAGATGGACTCTGGTCTCCTCCTGAAGT  
 CTACTGCAAGTTGGAATGTGAAGCTCCTCCAGTTATTCCCAATGCCAATCTGCTCCTGCCACATTTCTG  
 GAAGGCAACCATGATGTGGGCACCATCTGCAAATATGAGTGCAAACAGGCTACTATGTGAAGGAGACTT  
 CAGGAAGTCAAGGCAAGAACAAGTTCCTGAAGATCCAGTGCCTGGATGATGGAAGCTGGGAACAAGGGAG  
 CTGCGTCCCCGTGGTTTGTGAGCCTCCTCCTCCGGTGTGTTGAAGGCATGTACGAATGACTGATGGCTTC  
 AAGCTGGACAGCCAGTGTGTGCTCAACTGTAACCAAGGAAACGGAAGGGATTCCCATCCTCTGCACTAAAG  
 AGGGGTTGTGGACCCAGGAATCAAGTTGTGTGAAAACCTGCAAGGAGAAATGCCACCACCCACCTCAGA  
 GCTGAATCTGTGGAGTACAAGTGTGGACAGGGATATGGGATCGGTGCAGTGTGCTCCCCATCATGTGTA  
 ATCCCCCTAGTGACCCTGTGATACTACCAGAGAATGTGACTACTGACACTTTGGAGCACTGGATGGAAC

CTGTCAAAGTCCAGAGTATCGTGTGTACCGGCAGGCGCCAGTGGCACCCAGATCCCTCTCTGGTGCCTG  
 CATCCAGTCATGTGAGCCTTTCCAAGCAGATGGTTGGTGTGACACTATTAATAACCGGGCCTACTGCAAC  
 TATGACGGGGGAGACTGCTGCTCTTCCACACTCTTCCAAGAAGGTCATTCCATTTGCTGCTGATTGTG  
 ACTTGGATGAATGCACCTGTGCGAGACCCCAAGGCAGAAGAAAACCG

ACGCGTACGCGGGCCGCTCGAG - GFP Tag - GTTTAA

**Protein Sequence:**

>MG226285 representing NM\_001085376  
 Red=Cloning site Green=Tags(s)

MMCWKVLRISLVLTGWALSTTNSSEQWTRKKFLAQKEHLNQVLLLEGERCWLGKVRPRTAPQHHLFGV  
 YPSRLENYPRSYVGTQQQTLYAESQRSRPERQAPSGIPRDLTENPAGARRESQQPAAPVWGDGPIGQSQ  
 LLRNDDTYL GEGGSKEALGEPAIQGSSEIAVSTIATFAYQKGPTAETQRKGQSKSRLPRQVQKRQEDMT  
 GDPQNTPPQGFQLWPKEPLKHGSDSPLEGTIQNGGGASLRVETFNSQGGLPVL YFTGKRERLLLRPEVL  
 AEIPREAF TVEAWVRPEGGQSNPAIIAGVFNCSHTVNDKGWALGIRSGKDKGWRDARFFFSLRTDRMCK  
 ATIVTGHSTRYQPGMWITHVAATYDQHTALYVDGTRVASSRDQFGLNSPFMASCRLILGGDSSEHGHYF  
 RGYLGTLVIWSTALSQTHLQHSPLHPSAADEL TLLILTATFDPLMEQWAPFRDDL YPRLEVLQDSESQPE  
 ILSPLQPPPCGQTACDNVELISQYNKHGPLRREKVIRYQVNNIYDDEGLHPIVSDHQIRRQHEALNQAFS  
 RYNIWQLSVHRVHNSTLRHRVVLVNCEPSKIGNDHCDPECEHPLTGFDDGDCRLQGRCSWNRRDGLCH  
 VECNNMLNDFDDGDCCDPEVTDVRKTCFDPDSPKRAYMSVKELKEALQLNSTHFLNYYF ASSVREDLAGS  
 ATWPDKEALSHLGGVVLNPTYGMLGHTNIMIHEVGHVGLYHVFKGVSERESCDDPCRETVPSMETGD  
 LCADTAPTPKSKL CRDPEPANDTCGFTLFPGAPFNMYSYTDDECTDNF TPNQVARMHCYLDLVYQQWSE  
 SQKPTPIPPMVIQTHKSLTIHWPPIISGVVYDRAPDSMCSACTEDGTFRQYVYKASSGRVCDSSGYW  
 TPEEAVGPPDQVQCEPSLQAWSPELHLNHNMTVPCPAEGCSLELLFQYVPQADTLTLVWYTL SMNSSK  
 AFFDIEILLEHKKSMHLGPLNTFCDIPLTIKLMDEKVMGAKVYTFDERMEIDAALLTSRPNSSLCSGCK  
 PMSYQVLRPPFSSGLPMVVTHPHRKFDTDEVIPGQMYQVQVQAEAVGELGEASPPLSHIHGGPYCGDGK  
 VERSIGEMCDDGDLNLDGDCSRACELEEGFNACAGEPSLCYRYEGDGVCEDFEKESIITDCGLHTPEGYLD  
 QWASQAYSYHEDKEKCPVSLVTGEPHSMICTSWHPDSSPYHSFPGWPCVFSLLKQDQAGSEQAKDSLQK  
 DNEIWLEVCFNRPVAVAIYIFLASDGVTPGEHQATVTLYLIDVSGSNHSLGTYGLSCQQNPLVINVSH  
 HVNVYPQHTSSMLLNFSPLVGISAVALRTSSQTSSSAPSNCIPEQNYEGKSCAQRPCGEQGRCAPLLLD  
 HTDMVNCTSSSPGHMECAITCQRGYVLTSSQYLRNMQKEILLTCS SGHWKDVICKRLDCGVPDSSLV  
 NYANFSCLEGTDFLKQCSISCVPPAKLQGLNPWLTCLLEDGLWLSPEVYCKLECEAPPVIPNANLLLPHFL  
 EGNHVDGTICKYECKPGYVYKETSQSQGNKFLKIQCLDDGSWEQGSVVPVCEPPPPVFEGMYECTDGF  
 KLDSQCVLNCNQETEGIPILCTKEGLWTQEFKLCENLQGECPPTSELNSVEYKCGQGYGIGAVCSVSCV  
 IPPSDPVILPENVTDTLEHWMPEVKVQSI VCTGRRQWHPDPSLVHCIQSCEPFQADGWCDTINNRAYCN  
 YDGGDCCSSTLSKKVIPFAADCDLDECTCRDPKAEENQ

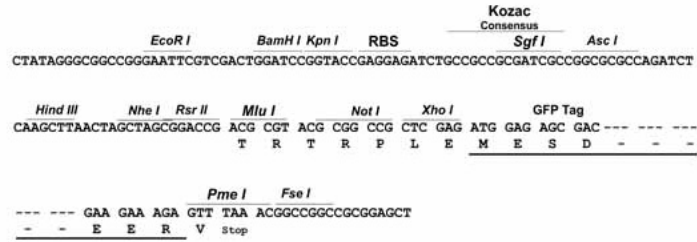
TRTRPLE - GFP Tag - V

**Restriction Sites:**

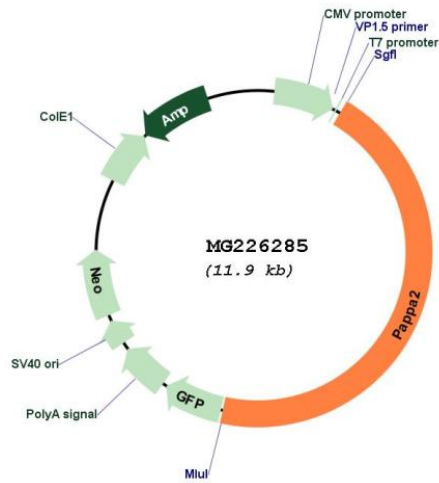
Sgfl-MluI

Cloning Scheme:

Cloning sites used for ORF Shutting:



Plasmid Map:



<b>ACCN:</b>	NM_001085376
<b>ORF Size:</b>	5367 bp
<b>OTI Disclaimer:</b>	The molecular sequence of this clone aligns with the gene accession number as a point of reference only. However, individual transcript sequences of the same gene can differ through naturally occurring variations (e.g. polymorphisms), each with its own valid existence. This clone is substantially in agreement with the reference, but a complete review of all prevailing variants is recommended prior to use. <a href="#">More info</a>
<b>OTI Annotation:</b>	This clone was engineered to express the complete ORF with an expression tag. Expression varies depending on the nature of the gene.
<b>Components:</b>	The ORF clone is ion-exchange column purified and shipped in a 2D barcoded Matrix tube containing 10ug of transfection-ready, dried plasmid DNA (reconstitute with 100 ul of water).
<b>Reconstitution Method:</b>	<ol style="list-style-type: none"><li>1. Centrifuge at 5,000xg for 5min.</li><li>2. Carefully open the tube and add 100ul of sterile water to dissolve the DNA.</li><li>3. Close the tube and incubate for 10 minutes at room temperature.</li><li>4. Briefly vortex the tube and then do a quick spin (less than 5000xg) to concentrate the liquid at the bottom.</li><li>5. Store the suspended plasmid at -20°C. The DNA is stable for at least one year from date of shipping when stored at -20°C.</li></ol>
<b>RefSeq:</b>	<a href="#">NM_001085376.3</a>
<b>RefSeq Size:</b>	8602 bp
<b>RefSeq ORF:</b>	5370 bp
<b>Locus ID:</b>	23850
<b>Cytogenetics:</b>	1 H1