

Product datasheet for **MG226282**

Nr4a2 (NM_001139509) Mouse Tagged ORF Clone

Product data:

Product Type:	Expression Plasmids
Product Name:	Nr4a2 (NM_001139509) Mouse Tagged ORF Clone
Tag:	TurboGFP
Symbol:	Nr4a2
Synonyms:	HZF-3; NOT; Nurr1; RNR-1; TINOR; TINUR
Mammalian Cell Selection:	Neomycin
Vector:	pCMV6-AC-GFP (PS100010)
E. coli Selection:	Ampicillin (100 ug/mL)



[View online »](#)

ORF Nucleotide Sequence:

>MG226282 representing NM_001139509
 Red=Cloning site Blue=ORF Green=Tags(s)

TTTTGTAATACGACTCACTATAGGGCGGCCGGGAATTCGTCGACTGGATCCGGTACCGAGGAGATCTGCC
 GCC**CGGATCGCC**

ATGCCTTGTTGTTCAAGCGCAGTATGGTCTCGCTCAAGGAGCCAGCCCGCTTCTCAGAGCTACAGTT
 ACCACTCTTCGGGAGAATACAGCTCCGATTTCTTAAGTCCAGAGTTTGCAAGTTTAGCATGGACCTCAC
 CAACACTGAAATTAAGTCCACCCTTCTCTCCAGCTTCAAGTACCTTTATGGACAACACTACAGCACAGGC
 TACGACGTCAAGCCACCTTGCTTGTACCAATGCCCTGTCCGGACAGCAGTCTCCATTAAGGTAGAAG
 ACATTCAGATGCACAACACTACCAGCAACACAGCCACCTGCCCTCAGTCCGAGGAGATGATGCCACACAG
 CGGGTCGGTTTACTACAAGCCCTTTCGCCCCGACACCCAGCACCCCGAGCTTCCAGGTGCAGCATAGC
 CCGATGTGGGACGATCCGGGCTCCCTTCACAACTTCCACCAGAAGTACGTGGCCACTACGCATATGATCG
 AGCAGAGGAAGACACCTGTCTCCCGCTGTCACTTCTCTTTAAGCAGTGCAGCCCGGCGACTCCTGT
 GTCTAGCTGCCAGATGCGCTTCGACGGGCTCTGCACGTCCCATGAACCCGGAGCCCGGGGACGCCAC
 CACGTAGTGGATGGGACAGCTTCCGCCGTGCCAACCCATTGCAAGCCGGCATCCATGGGCTTCCCGG
 GCCTGCAGATCGCCACGCATCGCAGTTGCTTGACACGCAGGTGCCCTCGCCGCCGTCCCGGGGCTCTCC
 CTCCAATGAGGGTCTGTGCGCTGTTTGGCGTGACAACGCGGCCTGTGACACTACGGTGTTCGCACTTGT
 GAGGGCTGCAAAGGTTTCTTAAAGCGCACGGTGCAAAAAACGCGAAATATGTGTGTTTAGCAAATAAAA
 ACTGCCAGTGGACAAGCGCCGCGAAACCGTTGTGACTGTGCGTTTTCAGAAAGTGCCTAGCTGTTGG
 GATGGTTAAAGAAGTGGTTCGCACGGACAGTTTAAAGGCCGGAGAGGTCGTTTACCCTCGAAGCCGAAG
 AGCCACAGGATCCCTCTCCCCCTCACCTCCGGTGTGATGATCAGTCCCTCGTCAGAGCCACGTCG
 ATTCCAATCCGGCAATGACCAGCTGGACTATTCAGGTTCCAGGCAAACCTGACTATCAGATGAGTGG
 AGATGATACCCAACATATCCAGCAGTTCTACGATCTCTGACCGGCTCTATGGAGATCATCAGAGGGTGG
 GCAGAGAAGATCCCTGGCTTTGCTGACCTGCCAAAGCCGACCAGGACCTGCTTTTTGAATCAGCTTCT
 TAGAATATTTGTTCTGCGCTTAGCATAACAGTCCAACCCAGTGGAGGTAACCTCATCTTTGCAATGG
 GGTGGTCTTGACAGGTTGCAATGCGTGCCTGGCTTTGGGGAATGGATTGATTCCATTGTTGAATTTCC
 TCCAATTCGAGAATATGAACATCGACATTTCTGCCTTCTCTGCATTGCTGCCCTGGCTATGGTCACAG
 AGAGACACGGGCTCAAGGAACCAAGAGAGTGGAAAGCTACAAAACAAATTGAAATTGTCTTAAAGA
 CCATGTGACTTTCAATAATGGGGTGGTGAACCGACCAACTACCTGTCTAACTGTTGGGAAGCTGCCA
 GAACTCCGACCCCTTTCACACAGGGCCTCCAGCGCATTTCTACCTGAAATTGGAAGACTTGGTACCAC
 CACCAGCAATAATTGACAACTTTCTCGACACCTTACCTTTT

ACGCGTACGCGGCCGCTCGAG - GFP Tag - GTTTAA

Protein Sequence:

>MG226282 representing NM_001139509
 Red=Cloning site Green=Tags(s)

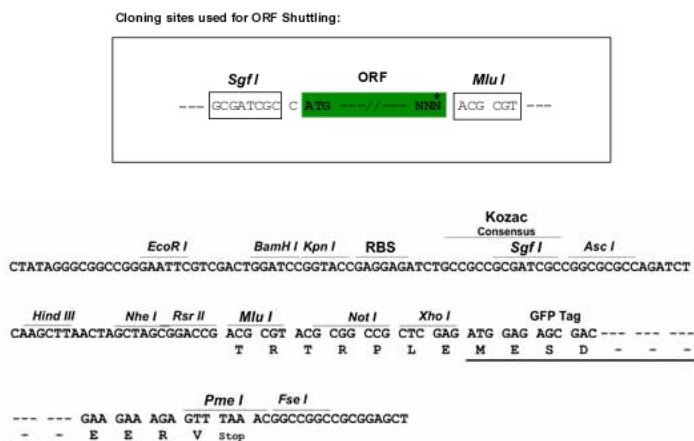
MPCVQAQYGSSPQGASPASQSYSHSSGEYSSDFLTPEFVKFSMDLTNTEITATTSLSFSFSTFMDNYSTG
 YDVKPPCLYQMPLSGQQSSIKVEDIQMHNYQQHSHLPPQSEEMPHSGSVYYKPSPTSTPSFVQVQHS
 PMWDDPGSLHNFHQYVATTHMIEQRKTPVSRSLFSFKQSPPGTPVSSCQMRFDGPLHVPMPNPEPAGSH
 HVVDGQTFVAVPNPIRKPASMGFPGLQIGHASQLLDTQVPSPPSRGSPSNEGLCAVCGDNAACQHYGVRTC
 EGCKGFFKRTVQKNAKYVCLANKNCPVDKRRRNRQYCRFQKCLAVGMVKEVVRTDSLKGRRRGLPSKPK
 SPQDPSPSPVSLISALVRAHVDSNPAMTSLDYSRFQANPDYQMSGDDTQHIQQFYDLLTGSMEIIRGW
 AEKIPGFADLPKADQDLLESAFLELFVLRLAYRSNPVEGKLIFCNGVVLHRLQCVRGFGEWIDSIVEFS
 SNLQNMNIDISAFSCIAALAMVTERHGLKEPKRVEELQNKIVNCLKDHVTFNNGGLNRPNYLSKLLGKLP
 ELRTLCTQGLQRIFYLKLLEDLVPPPAIIDKLFDLTLFP

TRTRPLE - GFP Tag - V

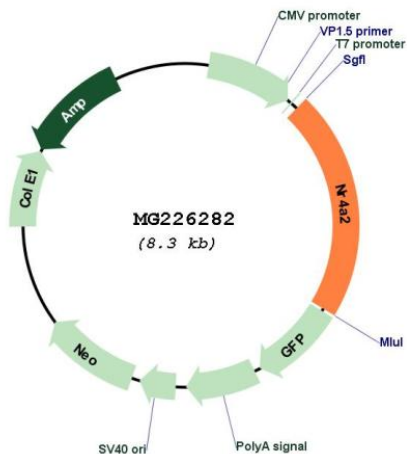
Restriction Sites:

Sgfl-MluI

Cloning Scheme:



Plasmid Map:



ACCN: NM_001139509
 ORF Size: 1794 bp

OTI Disclaimer:	The molecular sequence of this clone aligns with the gene accession number as a point of reference only. However, individual transcript sequences of the same gene can differ through naturally occurring variations (e.g. polymorphisms), each with its own valid existence. This clone is substantially in agreement with the reference, but a complete review of all prevailing variants is recommended prior to use. More info
OTI Annotation:	This clone was engineered to express the complete ORF with an expression tag. Expression varies depending on the nature of the gene.
Components:	The ORF clone is ion-exchange column purified and shipped in a 2D barcoded Matrix tube containing 10ug of transfection-ready, dried plasmid DNA (reconstitute with 100 ul of water).
Reconstitution Method:	<ol style="list-style-type: none">1. Centrifuge at 5,000xg for 5min.2. Carefully open the tube and add 100ul of sterile water to dissolve the DNA.3. Close the tube and incubate for 10 minutes at room temperature.4. Briefly vortex the tube and then do a quick spin (less than 5000xg) to concentrate the liquid at the bottom.5. Store the suspended plasmid at -20°C. The DNA is stable for at least one year from date of shipping when stored at -20°C.
RefSeq:	NM_001139509.1 , NP_001132981.1
RefSeq Size:	3026 bp
RefSeq ORF:	1797 bp
Locus ID:	18227
UniProt ID:	Q06219
Cytogenetics:	2 31.66 cM
Gene Summary:	Transcriptional regulator which is important for the differentiation and maintenance of meso-diencephalic dopaminergic (mdDA) neurons during development. It is crucial for expression of a set of genes such as SLC6A3, SLC18A2, TH and DRD2 which are essential for development of mdDA neurons.[UniProtKB/Swiss-Prot Function]