

Product datasheet for **MG226280**

Nr4a2 (NM_013613) Mouse Tagged ORF Clone

Product data:

Product Type:	Expression Plasmids
Product Name:	Nr4a2 (NM_013613) Mouse Tagged ORF Clone
Tag:	TurboGFP
Symbol:	Nr4a2
Synonyms:	HZF-3; NOT; Nurr1; RNR-1; TINOR; TINUR
Mammalian Cell Selection:	Neomycin
Vector:	pCMV6-AC-GFP (PS100010)
E. coli Selection:	Ampicillin (100 ug/mL)



[View online »](#)

ORF Nucleotide Sequence:

>MG226280 representing NM_013613
 Red=Cloning site Blue=ORF Green=Tags(s)

TTTTGTAATACGACTCACTATAGGGCGGCCGGGAATTCGTCGACTGGATCCGGTACCGAGGAGATCTGCC
 GCC**CGGATCGCC**

ATGCCTTGTGTTCAAGCGCAGTATGGTCTCGCTCAAGGAGCCAGCCCCGCTTCTCAGAGCTACAGTT
 ACCACTCTTCGGGAGAATACAGCTCCGATTTCTTAAGTCCAGAGTTTGTCAAGTTTAGCATGGACCTCAC
 CAACACTGAAATTAAGTCCACCCTTCTCTCCAGCTTCAAGTACCTTTATGGACAACACTACAGCACAGGC
 TACGACGTCAAGCCACCTTGCTTGTACCAATGCCCTGTCCGGACAGCAGTCTCCATTAAGGTAGAAG
 ACATTCAGATGCACAACACTACCAGCAACACAGCCACCTGCCCTCAGTCCGAGGAGATGATGCCACACAG
 CGGGTCGGTTTACTACAAGCCCTTTCGCCCCGACACCCAGCACCCCGAGCTTCCAGGTGCAGCATAGC
 CCGATGTGGGACGATCCGGGCTCCCTTCACAACTTCCACCAGAAGTACGTGGCCACTACGCATATGATCG
 AGCAGAGGAAGACACCTGTCTCCCGCTGTCACTTCTCTTTAAGCAGTGCAGCCCGGCGACTCTGT
 GTCTAGCTGCCAGATGCGCTTCCAGCGGCTCTGCACGTCCCATGAACCCGGAGCCCGGGGACGCCAC
 CACGTAGTGGATGGGACAGCTTCCGCCGTGCCAACCCATTGCAAGCCGGCATCCATGGGCTTCCCGG
 GCCTGCAGATCGCCACGCATCGCAGTTGCTTGACACGCAGGTGCCCTCGCCGCCGTCGCCGGGCTCTCC
 CTCCAATGAGGGTCTGTGCGCTGTTTGCAGTGCACAACGCGGCCTGTGACGACTACGGTGTTCGCACTTGT
 GAGGGCTGCAAAGGTTTCTTAAAGCGCACGGTGCAAAAAACGCGAAATATGTGTGTTTAGCAAATAAAA
 ACTGCCAGTGGACAAGCGCCGCGAAACCGTTGTGACTGTGCGTTTCAAGTGCCTAGCTGTTGG
 GATGGTTAAAGAAGTGGTTCGCACGGACAGTTTAAAGCCGGAGAGGTCGTTTACCCTCGAAGCCGAAG
 AGCCACAGGATCCCTCTCCCCCTCACCTCCGGTGTGATGATCAGTCCCTCGTCAGAGCCACGTCG
 ATTCCAATCCGGCAATGACCAGCTGGACTATCCAGGTTCCAGGCAAACCTGACTATCAGATGAGTGG
 AGATGATACCCAACATATCCAGCAGTTCTACGATCTCTGACCGGCTCTATGGAGATCATCAGAGGGTGG
 GCAGAGAAGATCCCTGGCTTTGCTGACCTGCCAAAGCCGACCAGGACCTGCTTTTTGAATCAGCTTTCT
 TAGAATTATTTGTTCTGCGCTTAGCATAACAGTCCAACCCAGTGGAGGTAAGTCACTTTTGAATG
 GGTGGTCTTGACAGGTTGCAATGCGTGCCTGGCTTTGGGGAATGGATTGATTCCATTGTTGAATTTCC
 TCCAATTCGAGAATATGAACATCGACATTTCTGCCTTCTCTGCATTGCTGCCCTGGCTATGGTACAG
 AGAGACACGGGCTCAAGGAACCAAGAGAGTGGAAAGCTACAAAACAAATGTAATTTGCTTAAAGA
 CCATGTGACTTTCAATAATGGGGTTTGAACCGACCAACTACCTGTCTAACTGTTGGGAAGCTGCCA
 GAACTCCGACCCCTTTCACACAGGGCCTCCAGCGCATTTTCTACCTGAAATTGGAAGACTTGGTACCAC
 CACCAGCAATAATTGACAACTTTCTGACACCTTACCTTTT

ACGCGTACGCGGCCGCTCGAG - GFP Tag - GTTTAA

Protein Sequence:

>MG226280 representing NM_013613
 Red=Cloning site Green=Tags(s)

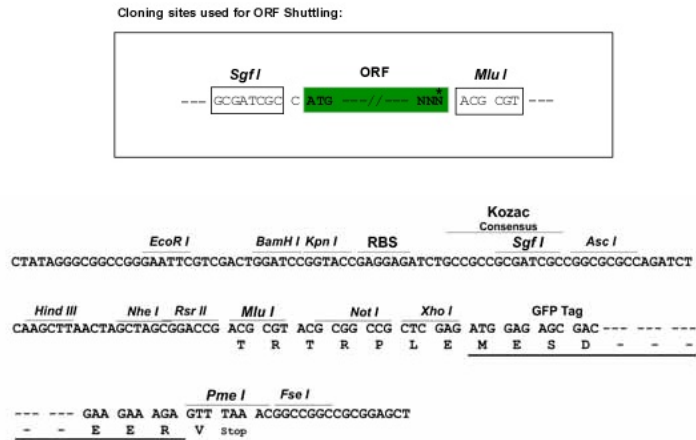
MPCVQAQYGSSPQGASPASQSYSHSSGEYSSDFLTPEFVKFSMDLTNTEITATTSLSFSTFMDNYSTG
 YDVKPPCLYQMPLSGQQSSIKVEDIQMHNYQQHSHLPPQSEEMPHSGSVYYKPSPTSTPSFVQHS
 PMWDDPGSLHNFHQYVATTHMIEQRKTPVSRSLFSFKQSPPGTPVSSCQMRFDGPLHVPMPNPEPAGSH
 HVVDGQTFVAVPNPIRKPASMGFPGLQIGHASQLLDTQVPSPPSRGSPSNEGLCAVCGDNAACQHYGVRTC
 EGCKGFFKRTVQKNAKYVCLANKNCPVDKRRRNRQYCRFQKCLAVGMVKEVVRTDSLKRRRRLPSKPK
 SPQDPSPSPVSLISALVRAHVDSNPAMTSLDYSRFQANPDYQMSGDDTQHIQFQYDILLTGSMEEIRGW
 AEKIPGFADLPKADQDLLESAFLELFVLRLAYRSNPVEGKLIFCNGVVLHRLQCVRGFGEWIDSIVEFS
 SNLQNMNIDISAFSCIAALAMVTERHGLKEPKRVEELQNKIVNCLKDHVTFNNGGLNRPNYLSKLLGKLP
 ELRTLCTQGLQRIFYLKLLEDLVPPPAIIDKLFDLTLFP

TRTRPLE - GFP Tag - V

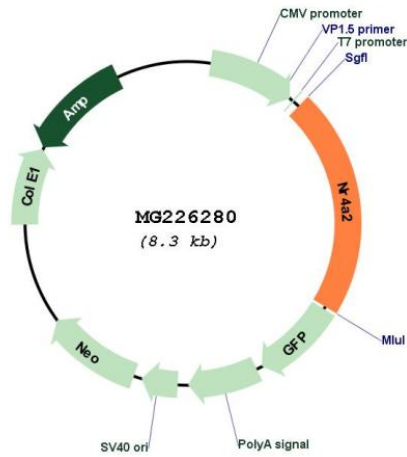
Restriction Sites:

Sgfl-MluI

Cloning Scheme:



Plasmid Map:



ACCN: NM_013613
 ORF Size: 1794 bp

OTI Disclaimer:	<p>Due to the inherent nature of this plasmid, standard methods to replicate additional amounts of DNA in E. coli are highly likely to result in mutations and/or rearrangements. Therefore, OriGene does not guarantee the capability to replicate this plasmid DNA. Additional amounts of DNA can be purchased from OriGene with batch-specific, full-sequence verification at a reduced cost. Please contact our customer care team at custsupport@origene.com or by calling 301.340.3188 option 3 for pricing and delivery.</p> <p>The molecular sequence of this clone aligns with the gene accession number as a point of reference only. However, individual transcript sequences of the same gene can differ through naturally occurring variations (e.g. polymorphisms), each with its own valid existence. This clone is substantially in agreement with the reference, but a complete review of all prevailing variants is recommended prior to use. More info</p>
OTI Annotation:	This clone was engineered to express the complete ORF with an expression tag. Expression varies depending on the nature of the gene.
Components:	The ORF clone is ion-exchange column purified and shipped in a 2D barcoded Matrix tube containing 10ug of transfection-ready, dried plasmid DNA (reconstitute with 100 ul of water).
Reconstitution Method:	<ol style="list-style-type: none"> 1. Centrifuge at 5,000xg for 5min. 2. Carefully open the tube and add 100ul of sterile water to dissolve the DNA. 3. Close the tube and incubate for 10 minutes at room temperature. 4. Briefly vortex the tube and then do a quick spin (less than 5000xg) to concentrate the liquid at the bottom. 5. Store the suspended plasmid at -20°C. The DNA is stable for at least one year from date of shipping when stored at -20°C.
RefSeq:	NM_013613.2 , NP_038641.1
RefSeq Size:	3172 bp
RefSeq ORF:	1797 bp
Locus ID:	18227
UniProt ID:	Q06219
Cytogenetics:	2 31.66 cM
Gene Summary:	Transcriptional regulator which is important for the differentiation and maintenance of meso-diencephalic dopaminergic (mdDA) neurons during development. It is crucial for expression of a set of genes such as SLC6A3, SLC18A2, TH and DRD2 which are essential for development of mdDA neurons.[UniProtKB/Swiss-Prot Function]