

Product datasheet for **MG226278**

Tyrp1 (NM_031202) Mouse Tagged ORF Clone

Product data:

Product Type:	Expression Plasmids
Product Name:	Tyrp1 (NM_031202) Mouse Tagged ORF Clone
Tag:	TurboGFP
Symbol:	Tyrp1
Synonyms:	b; brown; isa; Oca3; TRP-1; TRP1; Tyrp
Mammalian Cell Selection:	Neomycin
Vector:	pCMV6-AC-GFP (PS100010)
E. coli Selection:	Ampicillin (100 ug/mL)



[View online »](#)

ORF Nucleotide Sequence:

>MG226278 representing NM_031202
 Red=Cloning site Blue=ORF Green=Tags(s)

TTTTGTAATACGACTCACTATAGGGCGGCCGGAATTCGTCGACTGGATCCGGTACCGAGGAGATCTGCC
 GCC**CGGATCGCC**

ATGAAATCTTACAACGTCCTCCCTAGCCTATATCTCCCTTTCTGATGCTGTTTTATCAGGTTGGG
 CTCAGTTTCCACGAGAGTGTGCCAATATTGAGGCTCTGAGACGTGGGGTGTGTTGCCAGACCTGCCTCC
 TTCTCTGGACCGGGACTGACCCTTGTGGCTCATCATCAGGAAGAGGCAGGTGTGTGGCTGTGATTGCA
 GACTCCCGACCCACAGCCGCCATTATCCCCACGATGGTAAAGATGACCGAGAAGCCTGGCCTCTGAGGT
 TCTTTAATAGAACATGTCAGTGAATGATAATTTCTCAGGACACAACCTGTGGACTTGCCGTCTGGGTG
 GAGAGGAGCTGCATGCAACCAGAAAATTCTCACAGTCAGGAGAAATCTTCTAGACTTAAGTCCAGAAGAA
 AAGAGCCACTTTGTCAGGGCCTTGATATGGCGAAGCGCACAACTCACCTCAATTTGTCATTGCCACAA
 GGAGGTTAGAAGACATACTGGGACCAGATGGCAACACACCACAATTTGAGAACATTTCCGTTTAACTA
 CTTTGTGGACACACTATTATTCAGTCAAAAAACCTTCTCGGACAGGACAGGAAAGCTTTGGGGAT
 GTGGATTTCTCTACGAAGGACCCGCTTTCTCATGACAGGTACCATCTGCTGCAGCTGGAGAGAG
 ACATGCAGGAGATGCTGCAGGAGCCTTCTTCTCCCTTCTTACTGGAATTTGCAACTGGGAAAAACGT
 CTGCGATGTCTGCACTGACTTGATGGGATCCAGAAGCAACTTCGATTCTACTCTTATAAGCCCCAAC
 TCTGTCTTTTCTCAATGGAGAGTGGTCTGTGAATCCTTGGAAAGAGTACGATACCTGGGAACACTTTGTA
 ACAGCACTGAGGGTGGACCAATCAGGAGAAACCCAGCTGGAAATGTAGGGAGACCAGCAGTGCAGCGTCT
 TCCTGAGCCACAGGATGTCACTCAGTGCCTGGAGTCCGTGTATTTGACACACCTCTTTTATTCCAAT
 TCTACAGACAGTTTTTCGAAATACAGTGAAGGTTACAGTGTCTCCACGGGAAAATATGACCTGCTGTTT
 GAAGCCTTCAACAACCTGGCCACCTCTTCTGAATGGAACGGGAGGACAAACCCATTTGTCTCCCAATG
 TCCTATTTTGTCTCCTGCACACTTTCACTGATGCGGTCTTTGACGAATGGCTAAGGAGGTATAACGCC
 GATATTTCTACCTTCCCGTTGGAAAACGCACCTATTGGACATAACAGGCAATACAACATGGTCCATTCT
 GGCTCCAGTTACCAACACAGAAATGTTTGTACTGCTCCAGACAATCTGGGATATGCTTATGAAGTTCA
 ATGGCCAGGTGAGGATTTACTGTATCTGAAATCATTACCATTGCTGTAGTGGCTGCGTTTACTTGTGTA
 GCTGCCATTTTCGGGGTGTCTTGTCTGATCCGTTCTAGAAGCACCAAGAATGAAGCCAACCGCCTC
 TCCTCACTGATCACTATCAACGCTATGCTGAGGACTATGAGGAGCTCCCGAATCTAACCACTCCATGGT
 C

ACGCGTACGCGGCCGCTCGAG - GFP Tag - GTTTAA

Protein Sequence:

>MG226278 representing NM_031202
 Red=Cloning site Green=Tags(s)

MKSYNVLPLAYISLFLMLFYQVWAQFPRECANIEALRRGVCCPDLLPSSGPGTDPGSSSSGRGRCVAVIA
 DSRPHSRHYPHDGKDDREAWPLRFFNRTCQCNDNFSGHNCGTCRPGWRGAACNQILTVRRNLLDLSP
 KSHFVRALDMAKRTTHPQFVIATRRLLEDILGPDGNTQFENISVYNYFVWTHYYSVKKTFLLGTGQESFGD
 VDFSHEGPAFLTWHRYHLLQLERDMQEMLQEPSFSLPYWNFATGKNVCDVCTDDLMSRSNFDSTLISPN
 SVFSQWRVVCESLEEYDTLGTLCNSTEGGPIRRNPAGNVGRPAVQRLPEPQDVTQCLEVRVFDTPPFYSN
 STDSFRNTVEGYSAPTGKYDPAVRSLHNLHLFLNGTGGQTHLSPNDPIFVLLHTFTDAVFDEWLRRYNA
 DISTFPLENAPIGHNRQYNMVPFWPPVTNTEMFVTAPDNLGYAYEVQWPGQEFTVSEIITIAVVAALLLV
 AAIFGVASCLIRSRSTKNEANQPLLDHYQRYAEDYEELPNPNHSMV

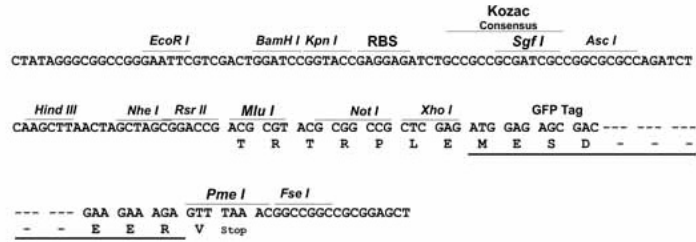
TRTRPLE - GFP Tag - V

Restriction Sites:

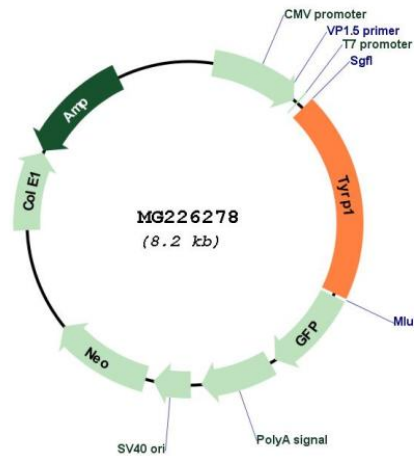
Sgfl-MluI

Cloning Scheme:

Cloning sites used for ORF Shutting:



Plasmid Map:



ACCN:	NM_031202
ORF Size:	2752 bp
OTI Disclaimer:	The molecular sequence of this clone aligns with the gene accession number as a point of reference only. However, individual transcript sequences of the same gene can differ through naturally occurring variations (e.g. polymorphisms), each with its own valid existence. This clone is substantially in agreement with the reference, but a complete review of all prevailing variants is recommended prior to use. More info
OTI Annotation:	This clone was engineered to express the complete ORF with an expression tag. Expression varies depending on the nature of the gene.
Components:	The ORF clone is ion-exchange column purified and shipped in a 2D barcoded Matrix tube containing 10ug of transfection-ready, dried plasmid DNA (reconstitute with 100 ul of water).
Reconstitution Method:	<ol style="list-style-type: none">1. Centrifuge at 5,000xg for 5min.2. Carefully open the tube and add 100ul of sterile water to dissolve the DNA.3. Close the tube and incubate for 10 minutes at room temperature.4. Briefly vortex the tube and then do a quick spin (less than 5000xg) to concentrate the liquid at the bottom.5. Store the suspended plasmid at -20°C. The DNA is stable for at least one year from date of shipping when stored at -20°C.
RefSeq:	NM_031202.3 , NP_112479.1
RefSeq ORF:	1614 bp
Locus ID:	22178
UniProt ID:	P07147
Cytogenetics:	4 37.89 cM
Gene Summary:	Plays a role in melanin biosynthesis (PubMed:2245916). Catalyzes the oxidation of 5,6-dihydroxyindole-2-carboxylic acid (DHICA) into indole-5,6-quinone-2-carboxylic acid (PubMed:7813420). May regulate or influence the type of melanin synthesized (PubMed:7813420, PubMed:2245916). Also to a lower extent, capable of hydroxylating tyrosine and producing melanin (PubMed:1537333).[UniProtKB/Swiss-Prot Function]