

## Product datasheet for **MG226265**

### Cacna1h (NM\_021415) Mouse Tagged ORF Clone

#### Product data:

**Product Type:** Expression Plasmids  
**Product Name:** Cacna1h (NM\_021415) Mouse Tagged ORF Clone  
**Tag:** TurboGFP  
**Symbol:** Cacna1h  
**Synonyms:** alpha13.2; Cav3; Cav3.2; MNCb-1209  
**Mammalian Cell Selection:** Neomycin  
**Vector:** pCMV6-AC-GFP (PS100010)  
**E. coli Selection:** Ampicillin (100 ug/mL)  
**ORF Nucleotide Sequence:** >MG226265 representing NM\_021415  
 Red=Cloning site Blue=ORF Green=Tags(s)

TTTTGTAATACGACTCACTATAGGGCGGCCGGAATTCGTCGACTGGATCCGGTACCGAGGAGATCTGCC  
 GCC**CGATCGCC**

ATGACCGAGGGCAGCTGGCAGCGGACGAGGTCCGGGTGCCCTGGGCGCTTCGCCTTCGGCTCCTGCAG  
 CGCCGGTGAGGGCTTCCCAGCGAGCCCTGGGGTGCCGGGGCGCAGGAGCAGCGAGGATCCGGGTCGAG  
 CGTGTGGCTCCCGAGAGCCAGGGACCGAGTGTGGTCCGGACCTGGGCGCCGACGAGGAACAGCCCGTC  
 CCATACCCCGCTCTGGCTGCCACAGTCTTCTTCTGCTCGGGCAAACCACGGGCCCCGAGCTGGTGCC  
 TCCGACTGGTTTGAACCCGTGGTTCGAGCACATTAGCATGCTGGTCATCATGCTGAACCTGCGTGACT  
 GGGCATGTTCCGGCCCTGTGAGGATGTTGAGTGCCGTTTCAAGACGTTGCAGCATCTTGGAGGCCTTGTG  
 GACTTCATCTTTGCCCTTCTTGTGCTGGAGATGGTTATCAAGATGGTGGCTTTGGGACTGTTCCGGCCAGA  
 AATGCTACCTGGGTGACACCTGGAACAGGCTGGACTTCTTATTGTCATGGCCGGCATGATGGAATACTC  
 TCTGGACGGACACAACGTGAGCCTCTCTGCCATCCGAACGGTGCCTGTGCTGCGGCCCTCCGCGCCATC  
 AACCGGTCCCAGCATGCGAATCCTGGTCACACTGCTGCTGGACACACTGCCATGCTTGGGAACGTGC  
 TTCTTCTGCTTCTTCTGCTTCTTCTTCTTCCGTCATCTTCCGTCATGTTGGGTCCAGCTCTGGGCTGGCCTGCTGCG  
 GAACCGATGCTTCTGGACAGCGCCTTCGTCAGGAACAACAACCTGACCTTCTTGGGCCATACTACCAG  
 ACAGAGGAGGGCGAGGAGAACCATTCTGCTCCTCACGCCGACACGCGCATGCAGAAATGCTCAC  
 ACATCCCAGCCCGCTGAGCTTCGCGTGCAAGTGCACGCTCGGCTGGGAGGCTACGGGCAGCCACAGGC  
 TGAGGATGGGGTGCCGGCCGAAATGCCTGCATCAACTGGAACAGTACTACAACGTGTGCCCTCGGGG  
 GAATTC AACCTCACAATGGTGCCATCAACTTTGACAACATTGGCTATGCTTGGATCGCCATCTTCCAGG  
 TCATCACACTGGAGGGCTGGGTGGACATCATGTACTACGTATGGATGCCACTCGTTCTACAACCTCAT  
 CTACTTTATCCTCCTCATATTGGGGCTCTTCTTCTTATGATCAACCTGTGCTGGTGGTATAGCCACA  
 CAGTTCTCAGAGACAAAGCAGAGGGAAAACCAGCTGATGCGTGAACAGCGGGCCCGCTATCTGTCCAACG  
 ACAGCACTCTGGCCAGCTTCTCGGAGCCTGGCAGCTGCTACGAGGAGCTCCTCAAGTATGTGGCCACAT  
 CTTCGAAAGGTTAAACGCCGAGCCTGCGCTTACGCCGCTGGCAGAGCCGTTGGCGTAAGAAGGTA



[View online »](#)

GATCCCAGCAGCACCCCTGCATGGCCAAGGCCCCAGGCGGCGGCCACGGCGCGCAGGCAGGCGCACAGCTT  
 CTGTGCACCATCTGGTCTACCACCACCACCACCACCATACCACCATTACCACTTCAGCCACGGTGGCC  
 ACGCAGGCCTAGCCCAGAGCCAGGTGCTGGTGACACCAGGTTGGTCAGGGCCTGTGTGCCACCCTCGCCA  
 CCATCCCCAGGCCACGGGCCACCAGACTCTGAGTCTGTGCACAGTATCTACCATGCTGACTGCCACGTGG  
 AGGGGCCACAGAAAGAGCCCGTGTGGCGCACACCATAGCCACTGCTGCCAGCCTCAAGCTGGCCTCAGG  
 CTTGGGCACCATGAACTACCCACCATCCTACCTTCAGGAGCAGTCAACAGCAAAGGCAGTACCAGCTCA  
 CGACCCAAGGGGCTTCGAGTGTGGCACCCACGGGCCACAGCACACAGCCCTTGAGCCTGGGGAGCC  
 CCAGCCCCATGAGAAGATCCAGCACGTGGTTGGAGAACAAGGACTAGGCCGAGCCTCTAGTCACCTGTC  
 AGGCCTGAGTGTGCCTTGCCCCCTGCCAGCCCCAGGCTGGCACACTGACCTGTGAGCTGAAGAGCTGC  
 CCATATTGTGCCAGCGCCTGGAGGACCCGAGTTTGGTTTCACTGGCTCAGAGAGTGGGGACTCGGATG  
 CCCATGGAGTCTATGAGTTTACACAGGACGTACGGCATGGGGATTGCCGAGATCCTGTGCAGCAGCCCCA  
 TGAAGGGGGCACGCCGGCCATGGCAACGAACGGTGGCGGCCACCACTGCCGACAGCCTCACAGCCAGGA  
 GGGTTAGCCGCCTCTGGGCTTCTTTAGTAGCAAGCTGCGTGCATTGTAGACAGCAAGTACTTCAACC  
 GAGGCATCATGGCAGCCATCCTCGTCAATACTCTGAGCATGGGTGTTGAGTATCATGAGCAGCCTGATGA  
 GCTGACTAACCGCTGGAGATAAGCAACATCGTGTTCACCAGCATGTTTGCCTTGGAGATGCTACTGAAG  
 TTGCTGGCCTGTGGCCCGCTGGGTACATTCGGAACCCCTACAACATCTTCGATGGCATTGTTGTGCTCA  
 TAAGCGTCTGGGAGATCGTGGGGCAGGCAGATGGTGGCTTGTCCGTGCTCCGTACGTTCCGGCTGTGCG  
 GGTGCTGAAGCTGGTGCCTTCCCTGCCAGCCCTGCCGGCGCAGCTGGTGGTGTCTATGAGGACCATGGAC  
 AACGTGGCCACCTTCTGCATGCTGCTAATGCTCTTCATCTTATCTTCAGCATCCTGGGCATGCACCTGT  
 TTGGCTGTAAGTTTCAGCCTGAAGACAGACTCCGGAGACACCGTCCCTGACAGGAAGAAGTTCGACTCTCT  
 ACTGTGGGCCATCGTCACTGTGTTTTCAGATCTTGACACAGGAAGACTGGAACGTGGTTCTTTACAACGGC  
 ATGGCTCCACCTCGTCCCTGGGCTGCCCTTACTTTGTGGCCCTCATGACCTTTGGGAAGTATGTGCTCT  
 TCAACCTGCTGGTAGCCATCCTAGTGAAGGCTTCCAGGCAGAGGGTGTGCCACCAGCTGACACCCGA  
 TGAGGATAAGACATCTACCCACCTAGAGGAAGATTTTCGATAAGCTCAGAGACGTTTCGAGCCACAGAGATG  
 AAGATGTACTCACTGGCTGTGACCCCTAATGGGCACCTAGAGGGCCGAGGCAGTCTGCCGCCCTCTCA  
 TCACACACACAGCGGCTACGCCTATGCCTACCCCAAGAGCTCCCTCATCTGGACATGGCCCACTCT  
 TTTGGACTCACGGCGCAGCAGCAGCGGCTCTGTGGACCCCAACTCGGGGACCAGAAGTCTCTGGCTAGC  
 CTGCGCAGCTCCCCTTGTGCCCATGGGGCCCAACAGTGCAGGAAGCAGCCGGCGCTCCAGCTGGAAACA  
 GCCTGGGGCGGCACCCAGCCTCAAACGCCGACCCAGTGTGGGGAGCGGAGTCCCTGCTCTGTTGGA  
 GGGGAAGGGCAGCAGGATGACGAGGCCGAGGACAGCAGACCAAAGTCCAGGGACCCACCCAGGAGCTTCA  
 CCCGGGCCCGGGCCACACCCCTGCCGGCGGGGAGTCTGTTGGCCACCCGAGCACAATGGACCTGTGTC  
 CCCACCGCCTGCCACCCTCCTGCCACCAAGTCCGTGACTGCAACGGGCAGATGGTGGCCTGCCACG  
 CGAGTTCTTCTGCGCATCGACAGCCACAAGGAGGACGCAGCAGAGTTTGTATGATGACATAGAAGATAGC  
 TGCTGCTTCCGCCTGCACAAAGTGTGGAGCCCTATGCACCCAGTGGTGCAGCAGCCGGGAGTCCCTGGG  
 CCCTGTATCTTCCCGCCGAGAACAGGCTACGCGTCTCCTGCCAGAAAGTCAATCGCACACAAGATGTT  
 TGACCAGTGGTCTTGTCTTCACTTCTCAACTGTATCACCATTGCCCTGGAGAGGCCAGACATCGAT  
 CCGGGCAGCACTGAACGGGCCTTCTCAGCGTCTCCAATACATCTTACAGCCATCTTTGTTGGTGGAGA  
 TGATGGTGAAGGTGGTAGCCCTGGGGCTGCTGTGGGTGAGCATGCCTACCTGCAGAGCAGCTGGAATGT  
 GCTGGACGGGCTGCTTGTCTGCTGCTCCCTGGTTGACATCATTGTGGCCGTGGCCTTCCGGTGGTGGC  
 AAGATCCTAGGCGTCTGCGCGTGTGCCCTGTGCGGACCCTGAGGCCCTGAGGGTCAATCAGCCGAG  
 CTCAGGCCTCAAGCTGGTGTGGAGACTCTGATATCATCGCTCAGGCCATCGGGAATATCGTCTCAT  
 CTGCTGCGCCTTCTTATTATCTTTGGCATCCTCGGGGTGCAGCTTTTCAAGGGCAAATCTACTACTGC  
 GAGGGTACAGATACCAGGAATATCACCACCAAGGCCGAGTGCCATGCCGCCCACTACCGTGGGTGAGGC  
 GCAAATACAAGTTTGAACCTGGGTGAGGCGCTGATGTCTCTGTTGTTGCTGTCATCCAAGGATGGCTG  
 GGTAAACATCATGTACGACGGGCTGGACCCGTGGGCATCGACCAGCAGCCTGTGCAGAACCACAACCCC  
 TGGATGCTGCTACTTCACTCTCTTCTGCTCATCGTCACTTCTTCTGCTCAACATGTTTGTGGGCG  
 TGGTGGTGGAGAAGTCCACAAGTGCCGGCAGCACCAGGAGGCGGAGGAAGCGCGCGGGCGGAGGAGAA  
 ACGGCTGCGGCGCCTGGAGAGGAGGCGCAGGAAGGCCACGCGCCGCCCTACTACGAGACTATTACAC  
 ACGCGCCGCTCCATCCATTGCTGTGCACCAGCCACTACCTGGACCTTCTCATCACCTTTCATCTGCT  
 TCAATGTCATCACCATGTCCATGGAGCACTACAACCAGCCCAAGTCTCTGGACGAGGCCCTTAAGTACTG  
 CAACTACGTCTTACCATCGTCTTCTGCTTTGAGGCCGCGCTGAAGCTGGTGGCCTTTGGATTCCGGAGG  
 TTCTTCAAGGACAGGTGGAACAGCTGGACTTGGCCATCGTCTCCTGTCCATCATGGGCATTGCGCTGG

AGGAGATTGAGATGAATGCTGCCCTCCCCATCAACCCACCATCATCCGTATCATGCGCGTGCTTCGCAT  
CGCCCGTGTGCTGAAGCTACTGAAGATGGCCACAGGCATGCGCGCCCTGCTGGACTGTGGTTCAAGCT  
CTGCCTCAGGTAGGGAACCTTGGTCTTCTTTTCATGCTCCTGTTTTTATCTATGCTGCCCTGGGAGTGG  
AGCTGTTTGGGAGGCTAGAATGCAGCGAGGATAATCCCTGTGAGGGCCTGAGCAGACAGCCACCTTCAC  
CAACTTTGGCATGGCCTTCTCACGTTGTTCCGAGTGCCACTGGGGACAATTGGAATGGGATCATGAAG  
GATACTCTCCGTGAGTGTACCCGTGAAGACAAGCACTGCCTCAGCTACCTGCCCGCGCTCTCCCCGCTCT  
ACTTCGTCACCTTCGTGCTGGTCGCCAGTTTCGTGCTCAACGTGGTGGTGGCCGTGCTCATGAAGCA  
CCTGGAGGAGAGCAACAAGGAGGCCGGGAGGATGCGGAGATGGATGCCGAGATCGAGCTGGAGATCGCA  
CAGGGGTCCACAGCCCAGCCCCGTCCACAGCACAGGAAAGCCAAGGTACCGATCCAGACACCCCGAACC  
TCCTGGTCGTGCGCAAAGTATCTGTGTCCAGGATGCTCTCGCTACCCAATGACAGCTACATGTTCCGGCC  
GGTGGCTCCTGCGGCTGCCCGCATTCCACCCACTGCAGGAAGTGGAGATGGAGACCTACACAGGCCCG  
GTCACCTCTGCTCACTCGCCATCCCTGGAGCCCCGCACCTCCTTCCAGGTCCCATCAGCTGCGTCTCCC  
CAGCCAGGGCCAGCGACCCCTTGTGCCCTCTACCCCGGGATACGCCCGCTCTCTGAGCCTCTCAGG  
GATACTCTACAGACAGGAGGCCATGCACGCAGAGTCCCTGGAAGGGCAGATAGATGACGCTGGAGAAGAC  
GGCATCCCAGACTACACGGAGCCTGCTGAAAATATCTCCATGAGCCAGGCACCTCTGGGTACCCTGCGGT  
CTCCTCCATGCTCCCCACGGCCTGCCAGTGTCCGTACCCGCAAGCACACTTTTGGGCAGCACTGCATCTC  
CAGCCGCCCTCCCACCCTGGGAGGAGATGATGCTGAAGCAGCAGACCCGCGCCGATGAGGAGGTGACGCCAC  
ATCACCAGCTCAGCCCACCCTTGGCCAGCTACAGAGCCCCACAGCCCAGAGGCCTCCCCGACAGCCTCTC  
CTGCAAAAGGCACAGTGGGCAGTGGCGGGACCCACACAGGTTCTGCAGTGTAGATGCTCAGAGCTTCT  
GGACAAACCAGGTCGGCCAGATGCACAGCGGTGGTCTCGGTGGAACGGATAATGGGGATGGCCACCTA  
GAGTCTGGGAAGTGAAGGCCCGGGCTCAGAGCTAGAACCAGCTCTTGGGGCACGGAGGAAGAAGAAGA  
TGAGCCCTCCCTGCATCTCCATTGACCTCCCCTGAAGATGAGGGCTCCTCCCGCCCCCTGCAGCAGA  
AGGAGGCAACACTACTCTGAGGCGCCGAACCCGTCCTGTGAGGCTGCCCTCCATAGGGACTGCCAGAG  
TCTACAGAGGGCCAGGCCTGGAGGGGACCCTGTAGCCAAGGGTGAAGCGCTGGGGCCAGGCCTCTTGCC  
GGGCAGAGCATCTGACTGTCCCAACTTTGCCTTTGAGCCTCTGGACATGGGCGGACCTGGTGGAGACTG  
TTTCTTGACAGTGACCAAAGTGTGACCCAGAACCCAGAGTTTCTCTTTGGGGCTATAGTGCCTCTA  
ATACTAGAACTGAACTTCTATGCCCTCTGGTGACCCCCAGAGAAGGAGCAAGGACTGTACCTCACTG  
TGCCCCAGACCCCTTGAAGAAACCAGGGTCTCCCCAGCCACTCTGCCCCAGATGACAGTGGAGATGA  
GCCTGTG

AGCGGACCGACGCGTACGCGGCCGCTCGAG - GFP Tag - GTTTAA

**Protein Sequence:** >MG226265 representing NM\_021415  
 Red=Cloning site Green=Tags(s)

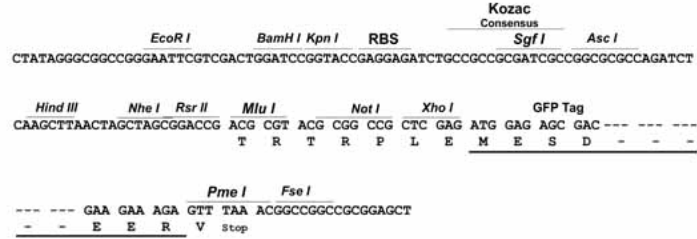
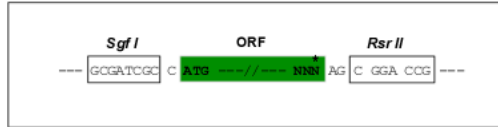
MTEGTLAADEVVPLGASPSAAPVRASPASPGVPGREEQRGSGSSVLAPESPGTECGADLGADEEQPV  
 PYPALAAATVFFCLGQTRPRSWCLRLVCNPWFHEHSMLVIMLNCVTLGMFRPCEDVECRSERCISILEAFD  
 DFIFAFFAVEMVIKMAVALGLFGQKCYLGDTWNRDLDFIVMAGMMEYSLDGHNVSLSAIRTVRVLRPLRAI  
 NRVPMSRILVTLLEDLPLGNVLLLCFFVFFIFGIVGVQLWAGLLRNRCFLDSAFVRNNLTLFRPYYQ  
 TEEGEENPFICSSRRDNGMQKCSHIPSRRELRVQCTLGWEAYGQQAEDGGAGRACINWNQYYNVCRS  
 GFNPHNGAIFDNIYAWIAIFQVITLEGWVDIMYYVMDAHSFYNFYIFILLIIVGSFFMINLCLVVIAT  
 QFSEKQRENQLMREQRARYLSNDSTLASFSEPGSCYEELLYVGHIFRKYKRRSLRLYARWQSRWRKKV  
 DPSSTLHGQGRPRRRRAGRRTASVHLLVYHHHHHHHHYHFHSHGPPRRSPEPGAGDTRLVRCVPPSP  
 PSPGHGPPDSESVHSIYHADCHVEGPQERARVAHTIATAASLKLASGLTMNYPTILPSGAVNSKGTSS  
 RPKGLRSAGTPGATAHSPLSLGSPSPYEKIQHVVGEQGLGRASSHL SGLSVPCPLPSPQAGTLTCELKSC  
 PYCASALEDPFEFSGSESGSDAHGVYEFTQDVRHGDCRDPVQPPHEGGTPGHGNERWRPPLRTASQPG  
 GLGRLWASFSSKLRRIVDSKYFNRGIMAAILVNTLSMGVEYHEQPDEL TNALEISNIVFTSMFALEMLLK  
 LLACGPLYIRNPYNI FDIIVVVISVWEIVGQADGGLSVLRTFRLLRVLKLVRFALRRQLVLMRTMD  
 NVATFCMLLMFIFIFISILGMHLFGCKFSLKTDSDGDTVPDRKNFDSLLWAVITVQIL TQEDWNVLYNG  
 MASTSSWAALYFVALMTFGNYVLFNLLVAILEVEGFAEGDATRSDTDEDKSTHLEEDFDKLRDVRATEM  
 KMYSLAVTPNGHLEGRGSLPPPLITHTAATPMPTPKSSPHLDMATLLDSRRSSSGSDVPQLGDQKSLAS  
 LRSSPCAPWGPNSAGSSRRSSWSNLGRAPSLKRRSQCGERESLLSGEGKSTDDAEASRPNSGTHPGAS  
 PGPRAPLRRAESLGHRTMDLCPRPATLLPTKFRDCNGQMVLPSEFFLRIDSHKEDAAEFDDDIEDS  
 CCFRLHKVLEPYAPQWCSRESWALYLFPPQNRLRVSCQKVI AHKMFHDHVVLFIFLNCITIALERPDI  
 PGSTERAFLSVSNYIFTAIFVEMMVKVALGLLWGEHAYLQSSWNVLDGLLVLSLVDIIVAVASAGGA  
 KILGVLRVLRLLRRLRPLRVISRAPGLKLVVETLISSLRPIGNIVLICCAFFIIFGILGVQLFKGKFYYC  
 EGTDRNITTKAECHAAHYRWRRKYNFDNLGQALMSLFVLSKDGWVNIYDGLDAVGIQPPVQNHNP  
 WMLLYFISFLLIYSFFVLNMFVGVVVENFHKCRQHQAEEARRREEKRLRRLERRRRKAQRRPYADYSH  
 TRRSIHSLECTSHYLDLFIITFIICLNVITMSMEHYNQPKSLDEALKYCNVFTIVFVFEAALKLVAFGFR  
 FFKDRWNQLDLAIVLLSIMGIALEEIEMNAALPINPTIIRIMRVLRIARVLKLLKMATGMRALLDVTVQA  
 LPQVGNLGLLFMLLFFIYAALGVELFGRLECEDNPCEGLSRHATFTNFGMAFLTLFRVSTGDNWNGIMK  
 DTLRECTREDKHCLSYLPALSPVYVTFVLAQFVLVNVVVAVLMKHLEESNKEAREDAEMDAEIEIEIA  
 QGSTAQPPSTAQESQGTDPDTPNLLVVRKVSVSRLSLPNDSYMFRPVAPAAAPHSHPLQEVEMETYTGP  
 VITSAHSPLEPRTSFQVPSAASSPARASDPLCALSPRDTPRSLSLRILYRQEAAMHAESLEGQIDDAGED  
 GIPDYTEPAENISMSQAPLGTLSPPCSPRPASVTRKHTFGQHCISSRPPTLGGDDAEAADPADEEVSH  
 ITSSAHPWPATEPHSPEASPTASPAKGTVGSGRDPHRFCVSDAQSF LDKPGRPDARWSSVELDNGDGHL  
 ESGEVVARASELEPALGARRKKKMSPPCISIDPPTTEDEGSSRPPAAEGGNTTLRRRTPSCEAALHRDCPE  
 STEGPGTGGDPVAKGERWQASCRAEHLVTPNFAFEPLDMGGPGGDCFLDSDQSVTPEPRVSSLGAIIVPL  
 ILETLSMPSGDPPEKEQGLYLTVPQTPLKKPGSPPATPAPDDSGDEPV

SGPTRRRLE - GFP Tag - V

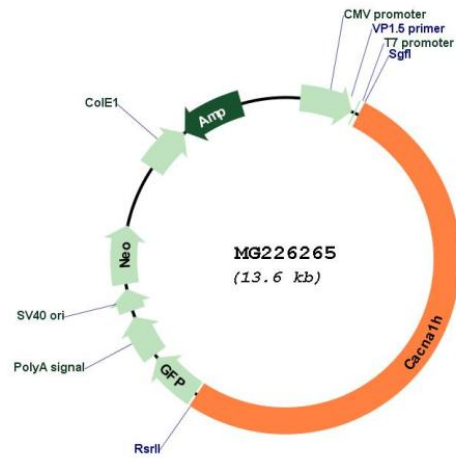
**Restriction Sites:** Sgfl-RsrII

Cloning Scheme:

Cloning sites used for ORF Shuttling:



## Plasmid Map:



ACCN: NM\_021415

ORF Size: 7077 bp

OTI Disclaimer: The molecular sequence of this clone aligns with the gene accession number as a point of reference only. However, individual transcript sequences of the same gene can differ through naturally occurring variations (e.g. polymorphisms), each with its own valid existence. This clone is substantially in agreement with the reference, but a complete review of all prevailing variants is recommended prior to use. [More info](#)

OTI Annotation: This clone was engineered to express the complete ORF with an expression tag. Expression varies depending on the nature of the gene.

Components: The ORF clone is ion-exchange column purified and shipped in a 2D barcoded Matrix tube containing 10ug of transfection-ready, dried plasmid DNA (reconstitute with 100 ul of water).

**Reconstitution Method:**

1. Centrifuge at 5,000xg for 5min.
2. Carefully open the tube and add 100ul of sterile water to dissolve the DNA.
3. Close the tube and incubate for 10 minutes at room temperature.
4. Briefly vortex the tube and then do a quick spin (less than 5000xg) to concentrate the liquid at the bottom.
5. Store the suspended plasmid at -20°C. The DNA is stable for at least one year from date of shipping when stored at -20°C.

**RefSeq:** [NM\\_021415.4](#), [NP\\_067390.4](#)

**RefSeq Size:** 8240 bp

**RefSeq ORF:** 7080 bp

**Locus ID:** 58226

**Cytogenetics:** 17 12.53 cM

**Gene Summary:** Voltage-dependent Ca(2+) channels mediate the entry of Ca(2+) ions into excitable cells and are involved in a variety of Ca(2+)-dependent processes, including muscle contraction, hormone or neurotransmitter release, and gene expression. The protein encoded by this gene is an integral membrane protein that belongs to the calcium channel alpha-1 subunits family. Two transcript variants encoding different isoforms have been found for this gene. [provided by RefSeq, Jul 2009]