

## Product datasheet for **MG226255**

### **Ptger4 (NM\_001136079) Mouse Tagged ORF Clone**

#### **Product data:**

Product Type:	Expression Plasmids
Product Name:	Ptger4 (NM_001136079) Mouse Tagged ORF Clone
Tag:	TurboGFP
Symbol:	Ptger4
Synonyms:	EP4; Ptgerep4
Mammalian Cell Selection:	Neomycin
Vector:	pCMV6-AC-GFP (PS100010)
E. coli Selection:	Ampicillin (100 ug/mL)



[View online »](#)

**ORF Nucleotide Sequence:**

>MG226255 representing NM\_001136079  
 Red=Cloning site Blue=ORF Green=Tags(s)

TTTTGTAATACGACTCACTATAGGGCGGCCGGAATTCGTCGACTGGATCCGGTACCGAGGAGATCTGCC  
 GCC**CGGATCGCC**

ATGTCCATCCCCGGAGTCAACGCGTCTTCTCCTCCACTCCGGAGAGGCTGAACAGCCCGGTGACCATTCCG  
 CAGAGTATGTTTCATCTTCGGGGTGGTGGCAACCTGGTGGCCATCGTAGTATTGTGCAAGTCGCGCAA  
 GGAGCAGAAAGAGACGACCTTTTACACTTAGTATGTGGGCTGGCTGTCCTGACCTTCTGGCACCTTG  
 TTGGTAAGCCCGGTGACCATCGCCACATACATGAAGGGCCAGTGGCCCGGAGACCAGGCACTGTGTGACT  
 ATAGCACCTTTCCTACTTTTCTCGGTCTGTCGGGTCTCAGCATCATCTGTGCCATGAGCATCGAGCG  
 CTACCTGGCCATCAACCACGCCTACTTCTACAGCCACTACGTGGACAAGCGGCTGGCCGGCTCACACTC  
 TTCGCCATCTATGCATCTAACGTGCTGTTCTGCGCGCTGCCAACATGGGCTGGCAGATCCGAGCGGC  
 AGTACCCGGGCACCTGGTCTTCATCGACTGGACCACCAACGTAACGGCCTACGCCCTTCTCTTACAT  
 GTACGCCGGCTTACGCTCCTTCTCATCTTCCACCCTGCTCTGCAACGTGCTGGTGTGGCGCGCGCTG  
 CTCGCCATGCACCGCCAGTTCATGCGCCGACCTCGTTGGGCACGGAGCAGCACCATGCGGCTGCCGCC  
 CCGCGGTAGCTTCGGTGGCTGTCCGGGGCCACGCTGGGGCCTCCCCAGCCCTGCAGCGCCTCAGCGACT  
 TCGCCGCCGAGGAGTTTCCGGCGCATCGCGGGTCCGGAGATCCAGATGGTTCATCTTACTCATCGCCACC  
 TCTCTGGTGGTGTCTATGCTCCATTCGCTCGTGGTGGAGTGTTCATTAACCAAGTTATATCAGCCAA  
 ACGTGGTGAAGACATCAGCAGAAACCCAGATTTGAGGCCATCAGGATGCTTCTGTGAACCCATCCT  
 GGACCCCTGGATTTACATCCTTCTCGGAAGACTGTGCTCAGTAAAGCCATAGAGAAGATCAAGTGCCCT  
 TTCTGCCGATTTGGCGGTTCCGGCAGAGACAGCTCGGCCAGCACTGCTCAGAGAGTCCGAGGACATCTT  
 CCGCCATGTCCGGCCACTCTCGCTCCTTCTCGCCGGGAGTTAAAGGAGATCAGCAGCAGTCCCAGAC  
 CCTCCTGTACCTGCCAGACCTGACTGAAAGCAGCCTCGGAGGCAGGAATTTGCTTCCAGGTTCCGATGGC  
 ATGGGCTGACCAAGCAGACACCACCTCGCTGAGAACTTTGCAATTTCCGAGACCTCAGACTCCTCCC  
 AGGGCCAGGACTCTGAGAGTGTCTGTTGGTGGATGAGGTTAGTGGGAGCCACAGAGAGGAGCCTGCCTC  
 TAAAGGAACTCTCTGCAAGTCACATTCGCCAGTGAACCTCTGAAATTATCTGAAAAATGTATA

AG**CGGACCG**ACGCGTACGCGGCCGCTCGAG – GFP Tag – GTTTAA

**Protein Sequence:**

>MG226255 representing NM\_001136079  
 Red=Cloning site Green=Tags(s)

MSIPGVNASFSSTPERLNSPVTIPAVMFIQVGVGNLVAIVVLCKSRKEQKETTFFYTLVCLAVTDLLGTL  
 LVSPVTIATYMKGQWPGDQALCDYSTFILLFFGLSGLSIIICAMSIERYLAINHAYFYSHYVDKRLAGLTL  
 FAIYASNVLFALPNMGLGRSERQYPGTWCFIDWTTNVTAYAAF SYMYAGFSSFLILATVLCNVLVCGAL  
 LRMHRQFMRRRTSLGTEQHHA  
 SLVVLICSIPLVVRVFINQLYQPNVVKDISRNPDLQAIRIASVNPILDPWIYILLRKTVLSKAIEKIKCL  
 FCRIIGSGRDSSAQHCSESRRSSAMSGHSRFLARELKEISSTSQTLLYLPDLTESSLGGRNLLPGSHG  
 MGLTQADTTSLRTLRISETSDSSQGQDSESVLLVDEVSGSHREEPASKGNLQVTFPSETLKLSEKCI

SGP**TRRRLE** – GFP Tag – V

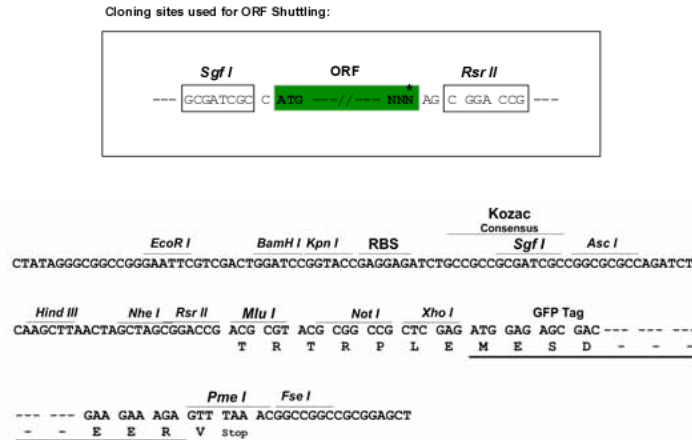
**Chromatograms:**

[https://cdn.origene.com/chromatograms/ja3708\\_d08.zip](https://cdn.origene.com/chromatograms/ja3708_d08.zip)

**Restriction Sites:**

Sgfl-RsrII

Cloning Scheme:



ACCN: NM\_001136079

ORF Size: 1464 bp

OTI Disclaimer: Due to the inherent nature of this plasmid, standard methods to replicate additional amounts of DNA in E. coli are highly likely to result in mutations and/or rearrangements. Therefore, OriGene does not guarantee the capability to replicate this plasmid DNA. Additional amounts of DNA can be purchased from OriGene with batch-specific, full-sequence verification at a reduced cost. Please contact our customer care team at [custsupport@origene.com](mailto:custsupport@origene.com) or by calling 301.340.3188 option 3 for pricing and delivery.

The molecular sequence of this clone aligns with the gene accession number as a point of reference only. However, individual transcript sequences of the same gene can differ through naturally occurring variations (e.g. polymorphisms), each with its own valid existence. This clone is substantially in agreement with the reference, but a complete review of all prevailing variants is recommended prior to use. [More info](#)

OTI Annotation: This clone was engineered to express the complete ORF with an expression tag. Expression varies depending on the nature of the gene.

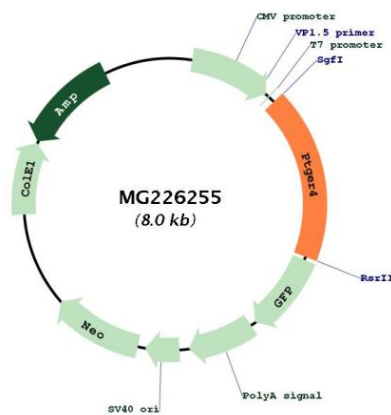
Components: The ORF clone is ion-exchange column purified and shipped in a 2D barcoded Matrix tube containing 10ug of transfection-ready, dried plasmid DNA (reconstitute with 100 ul of water).

Reconstitution Method:

1. Centrifuge at 5,000xg for 5min.
2. Carefully open the tube and add 100ul of sterile water to dissolve the DNA.
3. Close the tube and incubate for 10 minutes at room temperature.
4. Briefly vortex the tube and then do a quick spin (less than 5000xg) to concentrate the liquid at the bottom.
5. Store the suspended plasmid at -20°C. The DNA is stable for at least one year from date of shipping when stored at -20°C.

RefSeq: [NM\\_001136079.2](#)  
 RefSeq Size: 3327 bp  
 RefSeq ORF: 1467 bp  
 Locus ID: 19219  
 Cytogenetics: 15 1.99 cM  
 Gene Summary: Receptor for prostaglandin E2 (PGE2). The activity of this receptor is mediated by G(s) proteins that stimulate adenylate cyclase. Has a relaxing effect on smooth muscle. May play an important role in regulating renal hemodynamics, intestinal epithelial transport, adrenal aldosterone secretion, and uterine function.[UniProtKB/Swiss-Prot Function]

**Product images:**



Circular map for MG226255