

Product datasheet for **MG226247**

Sox3 (NM_009237) Mouse Tagged ORF Clone

Product data:

Product Type:	Expression Plasmids
Product Name:	Sox3 (NM_009237) Mouse Tagged ORF Clone
Tag:	TurboGFP
Symbol:	Sox3
Synonyms:	Sox-3
Mammalian Cell Selection:	Neomycin
Vector:	pCMV6-AC-GFP (PS100010)
E. coli Selection:	Ampicillin (100 ug/mL)



[View online »](#)

ORF Nucleotide Sequence:

>MG226247 representing NM_009237
 Red=Cloning site Blue=ORF Green=Tags(s)

TTTTGTAATACGACTCACTATAGGGCGGCCGGGAATTCGTCGACTGGATCCGGTACCGAGGAGATCTGCC
 GCC**GCGATCGCC**

ATGCGACCAGCTCGAGAGAACGCATCAGGTGAGAGAAGCCCGCGAGTTCGCCCGACTTTGCGCGGAGCC
 CTTGCGCTAGCCTGCCCTTCCCGCTGAGCTGCCGGCCCGCCGGCCCTGAGCACCCTCCGACGGAGTC
 CCCCAGCCTTTTACGGTGGCCGCTCCAGCCCCGGAGCGCCGTCTCTCCGCCACGCTGGCGCACCTC
 CTTCCCGCCCCGGCGATGTACAGCCTGTGGAGACTGAACTCAAGAACCCTGGGGCCGCCACCCAG
 CCGCGGGCACCAGCGTCCCGCAGCTCCCGCGCTGCAGGCAAGAGTGGCGCAACCCAGCCGGCGGAGC
 GAACGCAGGCAACGGGGCAGCGGGGCGCAACGGCGCGGTGGTGGTGGTGGCGGGGGCAGCGAC
 CAGGACCCGCTAAGCGACCCATGAACGCTTCATGGTGTGGTCCCGGGCAGCGGCGCAAGATGGCCC
 TGGAGAACCCCAAGATGCACAACCTCCGAGATCAGCAAGCGCTTGGCGCCGACTGGAAACTGCTGACCGA
 TCGGAGAAGCGCCGTTTCATCGACGAGGCCAAGCGACTGCGTGGGTGCACATGAAGGAGTACCCGGAC
 TACAAGTACCGGCCCGCCGCAAGACCAAGACGCTGCTCAAGAAGGACAAGTACTCGCTGCCCGGGCC
 TCCTGCCCGGGCGCCGCCGACGCCCGCCGCTGCCGCCGACGCCGCCGCCGCCAGCAGCCCGGTGGG
 CGTGGGCCAGCGCTGGACACGTACACGCACGTGAACGGCTGGGCCAACGGCGCCTACTCGCTCGTGACG
 GAGCAGCTGGGCTACGCGCAGCCCCGAGCATGAGCAGCCCGCCGCCACCCGCGTGCCTCAGATGC
 ACCGCTACGACATGGCCGGCCTGCAGTACAGCCCCATGATGCCACCCGGCGCCAGAGCTACATGAACGC
 CGCCGCCCGCGTCCCGCCGCTCGGGCTACGGGGCATGGCGCCCTCCGCCGGCCGCCGCCCGCCGCC
 GCCTACGGGACAGCCCCGCCACCGCTGCCGCCCGCCGCCGCCGCCGCCCGCCATGAGCCTGGGCCCA
 TGGGCTCCGTGGTGAAGTCGGAGCCAGCTCTCCGCCCGCCCATCGTTGCACTCGCAGCGCGCGTG
 CCTCGGGCAGCTGCGCGACATGATCAGCATGTACCTGCCACCTGGCGGGGACCGGCCGACGCGCGTCT
 CCGCTCCAGGGCGCGCTGCACGCGTGCACCAGCACTACCAGGGCGCCGGACTGCGGTCAATGGAA
 CGGTGCCGCTGACCCACATC

AG**CGGACCG**ACGCGTACGCGGCCGCTCGAG - GFP Tag - GTTTAA

Protein Sequence:

>MG226247 representing NM_009237
 Red=Cloning site Green=Tags(s)

MRPARENASGERSPRVPADFARSPASLFPPELPARRPLSTTPTESPLFTVAAPAPGAPSPATLAHL
 LPAPAMYSLLETELKNPVGPPTPAAGTGVPAAPGAAGKSGANPAGGANAGNGSGGANGGGGGGGSD
 QDRVKRPMNAFMVWSRQRRKMALENPKMHNSEISKRLGADWKLTDIAEKRPFIDEAKRLRAVHMKEYPD
 YKYRPRRKTLLKDKYSLPGLLPPGAAAAAAAAAAAAAAAASSPVGVGQRLDTYTHVNGWANGAYSLVQ
 EQLGYAQPPSMSSPPPPALPQMHRDYMAGLQYSPMPPGAQSYMNAAAAAAAAAASGYGGMAPSAAAAAA
 AYGQQPATAAAAAAAAAAMSLGPMGSVVKSEPSPPPAIASHSQRACLGDLRDMISMYLPPGGDAADAAS
 PLPGGRLHGVHQHYQGAGTAVNGTVPLTHI

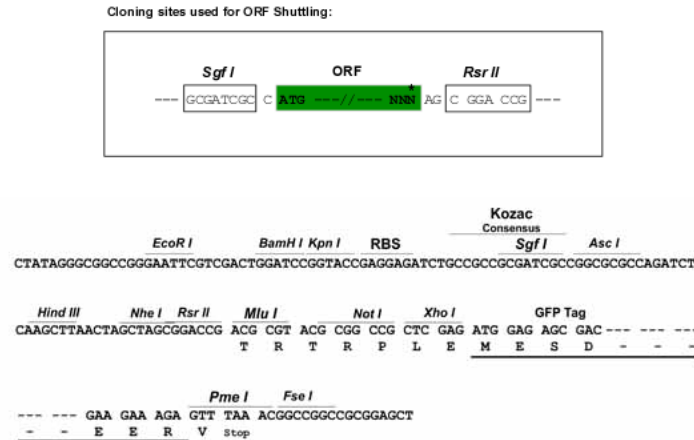
SGP**TRRRLE** - GFP Tag - V

Chromatograms:

https://cdn.origene.com/chromatograms/ja1836_f05.zip

Restriction Sites:

Sgfl-RsrII

Cloning Scheme:


ACCN: NM_009237

ORF Size: 1350 bp

OTI Disclaimer: Due to the inherent nature of this plasmid, standard methods to replicate additional amounts of DNA in E. coli are highly likely to result in mutations and/or rearrangements. Therefore, OriGene does not guarantee the capability to replicate this plasmid DNA. Additional amounts of DNA can be purchased from OriGene with batch-specific, full-sequence verification at a reduced cost. Please contact our customer care team at custsupport@origene.com or by calling 301.340.3188 option 3 for pricing and delivery.

The molecular sequence of this clone aligns with the gene accession number as a point of reference only. However, individual transcript sequences of the same gene can differ through naturally occurring variations (e.g. polymorphisms), each with its own valid existence. This clone is substantially in agreement with the reference, but a complete review of all prevailing variants is recommended prior to use. [More info](#)

OTI Annotation: This clone was engineered to express the complete ORF with an expression tag. Expression varies depending on the nature of the gene.

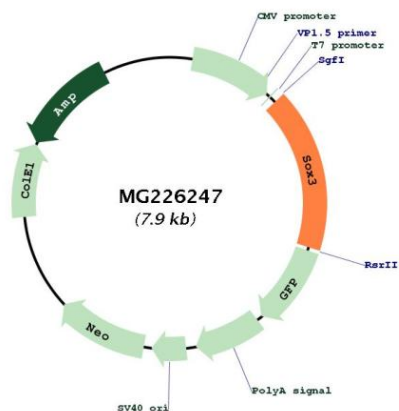
Components: The ORF clone is ion-exchange column purified and shipped in a 2D barcoded Matrix tube containing 10ug of transfection-ready, dried plasmid DNA (reconstitute with 100 ul of water).

- Reconstitution Method:**
1. Centrifuge at 5,000xg for 5min.
 2. Carefully open the tube and add 100ul of sterile water to dissolve the DNA.
 3. Close the tube and incubate for 10 minutes at room temperature.
 4. Briefly vortex the tube and then do a quick spin (less than 5000xg) to concentrate the liquid at the bottom.
 5. Store the suspended plasmid at -20°C. The DNA is stable for at least one year from date of shipping when stored at -20°C.

RefSeq: [NM_009237.2](#), [NP_033263.2](#)

RefSeq Size: 2086 bp
 RefSeq ORF: 1353 bp
 Locus ID: 20675
 Cytogenetics: X 33.66 cM

Product images:



Circular map for MG226247