

Product datasheet for **MG226236**

Nr5a1 (NM_139051) Mouse Tagged ORF Clone

Product data:

Product Type:	Expression Plasmids
Product Name:	Nr5a1 (NM_139051) Mouse Tagged ORF Clone
Tag:	TurboGFP
Symbol:	Nr5a1
Synonyms:	Ad4BP; ELP; ELP-3; Ftz-F1; Ftzf1; SF-1; SF1; STF-1
Mammalian Cell Selection:	Neomycin
Vector:	pCMV6-AC-GFP (PS100010)
E. coli Selection:	Ampicillin (100 ug/mL)



[View online »](#)

ORF Nucleotide Sequence:

>MG226236 representing NM_139051
 Red=Cloning site Blue=ORF Green=Tags(s)

TTTTGTAATACGACTCACTATAGGGCGGCCGGAATTCGTCGACTGGATCCGGTACCGAGGAGATCTGCC
 GCC**CGCATCGCC**

ATGGACTATTCGTACGACGAGGACCTGGACGAGCTGTGTCCAGTGTGTGGTGACAAGGTGTGGGCTACC
 ACTACGGGCTGCTCACGTGCGAGAGCTGCAAGGGCTTCTCAAGCGCACAGTCCAGAACAACAAGCATT
 CACGTGCACCGAGAGTCAGAGCTGCAAAATCGACAAGACGACGCTAAGCGCTGTCCCTTCTGCCGCTC
 CAGAAGTGCCTGACGGTGGGCATGCGCCTGGAAGCTGTGCGTGCTGATCGAATGCGGGGTGGCCGGAACA
 AGTTTGGGCCATGTACAAGAGAGACCGGGCTTGAAGCAGCAGAAGAAAGCACAGATTCGGGCCAATGG
 CTTCAAGCTGGAGACCGGACCACCGATGGGGTGGCCCCGCCACCCCTCCCCACCGGACTACATGTTA
 CCCCTAGCTGCACGACCGGAGCCAAAGGCCCTGGTCTCTGGCCACCCAGTGGGCCGCTGGGTGACT
 TTGGAGCCCCATCTACCCATGGCTGTGCTGGTCCCCACGGACCTCTGGCTGGCTACCTCTATCTGC
 CTTCTCTAACCGACCATCAAGTCTGAGTATCCAGAGCCCTATGCCAGCCCCACAACAGCCAGGGCCA
 CCTACAGCTATCCAGAGCCCTTCTCAGGAGGGCCAATGTACCAGAGCTCATATTGCAGCTGCTGCAAC
 TAGAGCCAGAGGAGGACAGGTGCGCGCTCGCATCGTGGGCTGTCTGCAGGAGCCAGCCAAAAGCCGCTC
 TGACCAGCCAGCGCCCTTCAGCCTCTCTGCGAATGGCCGACCAGACCTTTATCTCCATTGTGCTGACTGG
 GCACGAAGGTGCATGGTCTTTAAGGAGCTGGAGGTGGCTGACCAGATGACACTGCTGCAGAACTGTTGGA
 GCGAGCTGCTGGTGTGGACCACATCTACCGCCAGGTCCAGTACGGCAAGGAAGACAGCATCCTGCTGGT
 TACTGGACAGGAGGTGGAGCTGAGCACAGTGGCTGTGCAGGCTGGCTCCCTGCTGCACAGCCTGGTGTG
 CGGGCCCAAGAGTTAGTGTCCAGTTCATGCATGCAGCTGGACCGCCAGGAGTTCGTCTGTCTCAAGT
 TCCTCATCCTCTCAGCCTCGATGTGAAATTCCTGAACAACCACAGCCTCGTAAAGGACGCCAGGAAAA
 GGCCAACGCTGCCCTGTTGGATTACACCTTGTGCTCACTACCCACACTGCGGGGACAAATTCAGCAGTTG
 CTATTGTGCTGGTGGAGGTGCGGGCCCTGAGCATGCAGGCCAAGGAGTACCTGTACCACAAGCATTGG
 GCAACGAGATGCCCGCAACAACCTTCTCATTGAGATGCTGCAGGCCAAGCAGACT

ACGCGTACGCGGCCGCTCGAG - GFP Tag - GTTTAA

Protein Sequence:

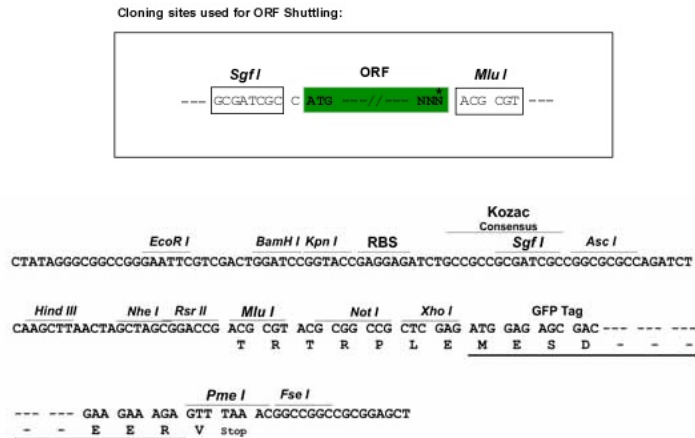
>MG226236 representing NM_139051
 Red=Cloning site Green=Tags(s)

MDYSYDELDDELCPVCGDKVSGYHYGLLTCESCKGFFKRTVQNNKHYTCTESQSCKIDKTQRKRCPCFRF
 QKCLTVGMRLEAVRADMRGGRNKFGPYKRDALKQKKAQIRANGFKLETGPPMGVPPPPPPPPDYML
 PPSLHAPEPKALVSGPPSGPLGDFGAPSLPMAVPGPHGLAGYL YPAFSNRTIKSEYPEPYASPPQPGP
 PYSYPEPFSGGNVPELILQLLQLEPEEDQVRARIVGCLQEPAKSRSDQPAPFSLCRMADQTFISIVDW
 ARRCMVFKLEVADQMTLLQNCWSELLVLDHIYRQVQYKEDSILLVTGQEVELSTVAVQAGSLLHSLVL
 RAQELVLQLHALQLDRQEFVCLKFLILFSLDVKFLNNHSLVKDAQEKANAALLDYTLCHYPHCGDKFQQL
 LLCLVEVRALSMQAKEYL YHKHLGNEMPRNLLIEMLQAKQT

TRTRPLE - GFP Tag - V

Restriction Sites:

Sgfl-MluI

Cloning Scheme:


ACCN: NM_139051

ORF Size: 1386 bp

OTI Disclaimer: Due to the inherent nature of this plasmid, standard methods to replicate additional amounts of DNA in E. coli are highly likely to result in mutations and/or rearrangements. Therefore, OriGene does not guarantee the capability to replicate this plasmid DNA. Additional amounts of DNA can be purchased from OriGene with batch-specific, full-sequence verification at a reduced cost. Please contact our customer care team at custsupport@origene.com or by calling 301.340.3188 option 3 for pricing and delivery.

The molecular sequence of this clone aligns with the gene accession number as a point of reference only. However, individual transcript sequences of the same gene can differ through naturally occurring variations (e.g. polymorphisms), each with its own valid existence. This clone is substantially in agreement with the reference, but a complete review of all prevailing variants is recommended prior to use. [More info](#)

OTI Annotation: This clone was engineered to express the complete ORF with an expression tag. Expression varies depending on the nature of the gene.

Components: The ORF clone is ion-exchange column purified and shipped in a 2D barcoded Matrix tube containing 10ug of transfection-ready, dried plasmid DNA (reconstitute with 100 ul of water).

Reconstitution Method:

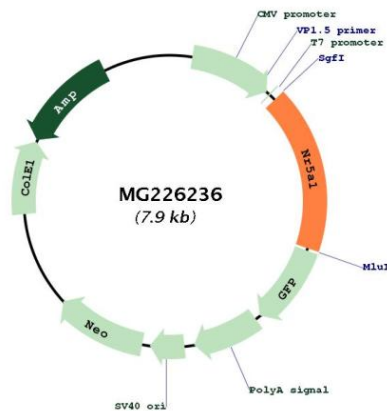
1. Centrifuge at 5,000xg for 5min.
2. Carefully open the tube and add 100ul of sterile water to dissolve the DNA.
3. Close the tube and incubate for 10 minutes at room temperature.
4. Briefly vortex the tube and then do a quick spin (less than 5000xg) to concentrate the liquid at the bottom.
5. Store the suspended plasmid at -20°C. The DNA is stable for at least one year from date of shipping when stored at -20°C.

RefSeq: [NM_139051.3, NP_620639.1](#)

RefSeq Size: 2947 bp
RefSeq ORF: 1389 bp
Locus ID: 26423
UniProt ID: [P33242](#)
Cytogenetics: 2 24.42 cM

Gene Summary: Transcriptional activator. Seems to be essential for sexual differentiation and formation of the primary steroidogenic tissues. Binds to the Ad4 site found in the promoter region of steroidogenic P450 genes such as CYP11A, CYP11B and CYP21B. Also regulates the AMH/Muellerian inhibiting substance gene as well as the AHCH and STAR genes. 5'-YCAAGGYC-3' and 5'-RRAGGTCA-3' are the consensus sequences for the recognition by NR5A1. The SFPQ-NONO-NR5A1 complex binds to the CYP17 promoter and regulates basal and cAMP-dependent transcriptional activity (By similarity). Transcription repressor of the Moloney leukemia virus long terminal repeat in undifferentiated murine embryonal carcinoma cells. Binds phosphatidylcholine and phospholipids with a phosphatidylinositol (PI) headgroup, in particular phosphatidyl(3,4)bisphosphate, phosphatidyl(3,5)bisphosphate and phosphatidyl(3,4,5)triphosphate. Activated by the phosphorylation of NR5A1 by HIPK3 leading to increased steroidogenic gene expression upon cAMP signaling pathway stimulation. [UniProtKB/Swiss-Prot Function]

Product images:



Circular map for MG226236