

Product datasheet for **MG226221**

Capn3 (NM_007601) Mouse Tagged ORF Clone

Product data:

Product Type:	Expression Plasmids
Product Name:	Capn3 (NM_007601) Mouse Tagged ORF Clone
Tag:	TurboGFP
Symbol:	Capn3
Synonyms:	AI323605; Capa-3; Capa3; Lp82; p94
Mammalian Cell Selection:	Neomycin
Vector:	pCMV6-AC-GFP (PS100010)
E. coli Selection:	Ampicillin (100 ug/mL)



[View online »](#)

ORF Nucleotide
Sequence:

>MG226221 representing NM_007601
 Red=Cloning site Blue=ORF Green=Tags(s)

TTTTGTAATACGACTCACTATAGGGCGGCCGGAATTCGTCGACTGGATCCGGTACCGAGGAGATCTGCC
 GCC**CGGATCGCC**

ATGCCAACTGTTATTAGTCCAACGTGGCCCCAAGGACGGGGCTGAGCCAGGTCCCAGGGCCAGTTC
 CTCACCCAGCTCAAGGCAAGACCACCGAGGCTGGAGGTGGACACCCAAGTGGCATCTATTCGGCCATCAT
 TAGCCGCAATTTTCCGATCATCGGTGTAAAGAGAAGACATTTGAGCAGCTCCGACGGAAGTGCCTAGAG
 AAGAAAGTTCTTTATCTAGACCCCGAGTCCCACCGGATGAGACCTCTCTTTTACAGTCAGAAGTTCC
 CCATCCAGTTCGTCTGGAAGAGACCTCCGAAAATTTGTGAGAATCCCGGTTTATCATTGGTGGAGCCAA
 CAGGACTGACATCTGCCAAGGAGATCTAGGGGACTGCTGGTTTCTTGCAGCCATCGCTGCCTGACCCTG
 AATGAGCGGCTGCTTTTCCGAGTTATACCCCATGATCAAAGTTTCACTGAAAACACGCAGGGATCTTCC
 ACTTCCAGTTCGTGGCCTATGGAGACTGGGTAGATGTGGTCATTGACGACTGTCTGCCAACATACAACAA
 TCAGCTGGTTTTACCAAATCCAACCACCGCAATGAGTTCGGAGTGTCTCCTTGAGAAGGCTTATGCC
 AAGCTCCATGGCTCCTATGAAGCTCTGAAAGGTGGGAATACCACAGAAGCCATGGAGGACTTCACAGGAG
 GGGTGACAGAGTTTTTTGAGATCAAGGATGCTCCGAGTGACATGTACAAGATTATGAGGAAAGCTATCGA
 GAGAGGCTCCCTCATGGGCTGCTCCATTGACGATGGCAGCAACATGACTTATGGAACCTCTCCTTCTGGT
 CTGAACATGGGGGAGTTGATTGCACGGATGGTGAGAAATATGGATAACTCGCTGCTCAGAGACTCAGACC
 TGGACCCAGGGGCTCAGATGACAGACCGTCACGGACAATTGTTCCAGTGCAGTATGAAACAAGAATGGC
 CTGTGGTTGGTAAAGGGCATGCCTATTCAGTCACTGGGCTGGAGGAGGCCCTGTTCAAAGGTGAGAAG
 GTGAAGTTGGTGGCTCGGAAACCCCTGGGGCCAGGTGGAGTGGAAACGGCTCTTGGAGTGTGGTTGGA
 AGGACTGGAGCTTTGTAGACAAAAGATGAGAAGGCCCGTCTACAGCACAGGTTACTGAGATGGAGAGTT
 CTGGATGTCATATGATGACTTCGTCTACCATTTACGAAGCTGGAGATCTGCAACCTCACAGCTGACGCC
 CTGGAGTCCGATAAGCTTCAGACCTGGACGGTGTCTGTAAACGAGGGCCGCTGGGTGAGGGGCTGTTCTG
 CTGGAGGCTGCCGAAACTTCCCAGACACTTTCTGGACCAACCCGAGTACCGTCTCAAGCTTCTGGAGGA
 AGACGATGACCCTGAGGACTCTGAGGTAATCTGCAGCTTCTCGTGGCTCTGATGCAGAAGAACCGCGC
 AAGGACCGGAAGCTGGGGCCAACCTCTTCACTATTGGCTTCGCCATCTACGAGGTTCCCAAAGAGATGC
 ACGGGAATAAGCAACACCTGCAGAAGGACTTCTTCTGTACAACGCCTCCAAGGCCAGAAGCAAAACCTA
 CATCAACATGCGGAGGTGTCCCAGCGCTTCCGCCTGCCACCCAGCGAGTATGTCATCGTACCCTCCACC
 TACGAGCCCCACCAGGAGGGGAATTCATCCTCCGAGTCTTCTCCGAAAAGAGGAATCTCTCTGAGGAAG
 CTGAAAATACAATCTCTGTGGATCGGCCAGTGA AAAAGAAAAAACAAGCCCATCATCTTCGTTTCTGA
 CAGAGCAAACAGCAACAAGGAGCTGGGTGTGGACCAGGAGGCAGAGGAGGGCAAAGACAAAGCAGGGCC
 GAGAAACGAGGGGAAACCCACAGCCAAGGCTGGCCACACAGACCAGGAAAGTGAGGAGCAGCAGCAAT
 TCCGGAACATCTTCAGGCAGATCGCAGGCGACGACATGGAGATCTGTGCAGATGAACTCAAGAATGTCT
 CAACACAGTGGTGAACAAACACAAGGACCTGAAGACACAAGGGTTCACGCTGGAGTCTGCAGAAGCATG
 ATAGCTCTCATGGATACAGATGGCTCTGGAAGACTGAATCTTCAAGAGTCCATCACCTTGAAAAAGA
 TCAAGGCTGGCAGAAAATCTTCAAGCACTATGACACAGACCATTCCGGTACCATCAATAGCTATGAGAT
 GCGAAATGCAGTCAATGATGCAGGCTTCCATCTCAACAGCCAACCTATGACATCATCCATGCGCTAT
 GCGGACAAAACACATGAACATCGACTTTGACAGTTCATCTGCTGCTTCGTCAGGCTGGAAGGGATGTTCA
 GAGCTTTTAACGCATTTGACAAGGATGGCGATGGTATCATCAAACCTGAATGTAAGTGGCTGCAGCT
 TACCATGTATGCC

ACGGTACGCGGCCGCTCGAG – GFP Tag – GTTTAA

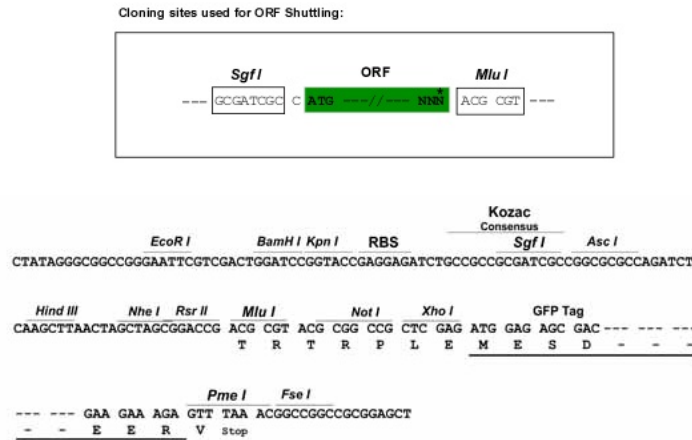
Protein Sequence: >MG226221 representing NM_007601
 Red=Cloning site Green=Tags(s)

MPTVISPTVAPRTGAEPSPGPVPHPAQGKTTEAGGGHPSGIYSAIISRNFPIIGVKEKTFEQLRRKCLE
 KKVLYLDPEFPDETSLFYSQKFPFQVWKRPEICENPRFIIGGANRTDICQDLDGDCWFLAAIACLT
 NERLLFRVIPHDQSFTENYAGIFHFQFWRYGDWVDVVIDDCLPTYNNQLVFTKSNHRNEFWSALLEKAYA
 KLHGSEALKGGNTTEAMEDFTGGVTEFFEIKDAPSDMYKIMRKAIERGSLMGCSIDGTMNTYGTSPSG
 LNMGELIARMVRNMDNSLLRDSLDPRGSDDRPSRTIIVPVQYETRMACGLVKGHAYSVTGLEEALFKGEK
 VKLVRLRNPWGQVEWNGSWSDGWKDSFVVKDEKARLQHQVTEDEGEFWSYDDFVYHFTKLEICNLTADA
 LESDKLQWTWVSVNEGRWVRGCSAGGCRNFPDTFWTNPQYRLKLEEDDDPEDSEVICSFVALMQNRR
 KDRKLGANLFTIGFAIYEVPKEMHGKQHLQKDFFLYNASKARSKTYINMREVSQRFLPPSEYVIVPST
 YEPHQEGEFILRVFSEKRNLSEEAENTISVDRPVKKKKNKPIIFVSDRANSNKLGVQEAEEGKDKAGP
 EKRGETPQPRPGHTDQESSEQQQFRNIFRQIAGDDMEICADELKNVLTNVNKHKDLKTQGFLESCRSM
 IALMDTDGSGRLNLQEFHHLWKKIKAWQKIFKHVDTDHSGTINSYEMRNAVNDAGFHLNSQLYDIITMRY
 ADKHMNIDFDSFICCFVRLEGMFRAFNAFDKDGDIKLNVLWLQLTMYA

TRTRPLE - GFP Tag - V

Restriction Sites: Sgfl-MluI

Cloning Scheme:



ACCN: NM_007601

ORF Size: 2463 bp

OTI Disclaimer: The molecular sequence of this clone aligns with the gene accession number as a point of reference only. However, individual transcript sequences of the same gene can differ through naturally occurring variations (e.g. polymorphisms), each with its own valid existence. This clone is substantially in agreement with the reference, but a complete review of all prevailing variants is recommended prior to use. [More info](#)

OTI Annotation: This clone was engineered to express the complete ORF with an expression tag. Expression varies depending on the nature of the gene.

Components: The ORF clone is ion-exchange column purified and shipped in a 2D barcoded Matrix tube containing 10ug of transfection-ready, dried plasmid DNA (reconstitute with 100 ul of water).

Reconstitution Method:

1. Centrifuge at 5,000xg for 5min.
2. Carefully open the tube and add 100ul of sterile water to dissolve the DNA.
3. Close the tube and incubate for 10 minutes at room temperature.
4. Briefly vortex the tube and then do a quick spin (less than 5000xg) to concentrate the liquid at the bottom.
5. Store the suspended plasmid at -20°C. The DNA is stable for at least one year from date of shipping when stored at -20°C.

RefSeq: [NM_007601.3](#), [NP_031627.2](#)

RefSeq Size: 3167 bp

RefSeq ORF: 2466 bp

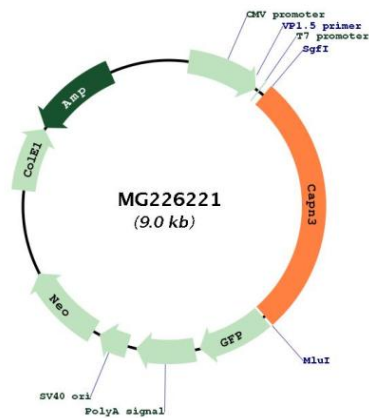
Locus ID: 12335

UniProt ID: [Q64691](#)

Cytogenetics: 2 60.31 cM

Gene Summary: Calcium-regulated non-lysosomal thiol-protease.[UniProtKB/Swiss-Prot Function]

Product images:



Circular map for MG226221