

Product datasheet for **MG226218**

Nfic (NM_008688) Mouse Tagged ORF Clone

Product data:

Product Type:	Expression Plasmids
Product Name:	Nfic (NM_008688) Mouse Tagged ORF Clone
Tag:	TurboGFP
Symbol:	Nfic
Synonyms:	1110019L22Rik; 1500041O16Rik; AA589446; AI746521; NF1-C
Mammalian Cell Selection:	Neomycin
Vector:	pCMV6-AC-GFP (PS100010)
E. coli Selection:	Ampicillin (100 ug/mL)
ORF Nucleotide Sequence:	>MG226218 representing NM_008688 Red=Cloning site Blue=ORF Green=Tags(s)

TTTTGTAATACGACTCACTATAGGGCGCCGGGAATTCGTCGACTGGATCCGGTACCGAGGAGATCTGCC
GCC**CGATCGCC**

ATGTATTCCTCCCGCTCTGCTGACCCAGGATGAGTTCACCCGTTTCATCGAGGCGCTGCTGCCGATG
TGCGCGCCTTCGCTACACCTGGTTCAACCTGCAGGCGCGCAAGCGCAAGTACTTCAAGAAGCACGAGAA
GCGCATGTCCAAGGACGAGGAGCGCGGTGAAGGATGAGCTGCTGGGTGAAAAGGCCGAAGTGAAGCAG
AAGTGGGCGTCGCGGCTGCTGGCCAAGCTGCGCAAGGACATCCGGCCGAGTGCCGTGAAGACTTCGTAC
TGGCTGTGACTGGCAAGAAGGCCAGGCTGTGTGCTGTCCAACCCGGACCAGAAGGGCAAGATGCGGCG
CATCGACTGCCTGCGCCAGGCCGACAAAGTGTGGCGTCTGGACCTGGTCAATGGTCACTCTGTTCAAGGGC
ATCCCACTGGAGAGCACAGATGGTGAGCGGCTGGTGAAGGCGGCTGCCTGTGCGCACCCGGTGTGTGTG
TGCAGCCGACCATATTGGCGTGGCCGTCAAGGAGCTGGACCTGTACCTGGCCTACTTTGTGCGGGAGCG
CGATGCGGAGCAGAGCAGCAGCCCCGGACAGGTGTGGGCTCAGACCAGGAGGACAGCAAGCCATAACG
CTGGACACCACAGACTTCCAGGAGACTTTGTACGTGAGGTGTGTTCAAGTGTACGAGGCTGATCCAAG
TGTCTCGACACCTGTGGTGACCGGAACCGGACCAACTTCTCACTGGGAGAGCTGCAGGGTCACTGGC
ATATGACCTGAACCCGGCCAGCGCCGCATGAGAAGGACTTACCCAGCACCTCCTCCAGTGGGAGCAAG
CGGCACAAGTCGGGCTCGATGGAAGAGGACGTGGACACGAGCCCCGGCGGCGACTACTACAGTCCGCCA
ACTCACCCAGGATAGCAGCCGCAACTGGACGGAAGACATAGAAGGAGGCATCTCATCCCGGTGAAGAA
GACAGAGATGGACAAATCTCCATTCAACAGCCCGTCCCCCAGGACTCCCCCGGCTCTCCAGTTCACA
CAACACCACAGGCCGGTTCATCGCGGTACACAGTGGCATCGCGGGAGCCCCACCCGACCTCGGCCCTGC
ACTTCCCTGCCACGCCATCCTGCCACAGACAGCCTCCACCTACTTCCCCATACGGCCATCCGGTACCC
GCCACATCTAACCCCCAGGACCCGCTCAAGGATCTGGTGTCCCTGGCCTGTGACCCGGCCACCCAGCAG
CCTGGACCGCTGCTCTCCGCCGACACGTCCCCTGCAACAGTCCCTTTGTGGGAT

ACGCGTACGCGGCCGCTCGAG - GFP Tag - GTTTAA



[View online >](#)

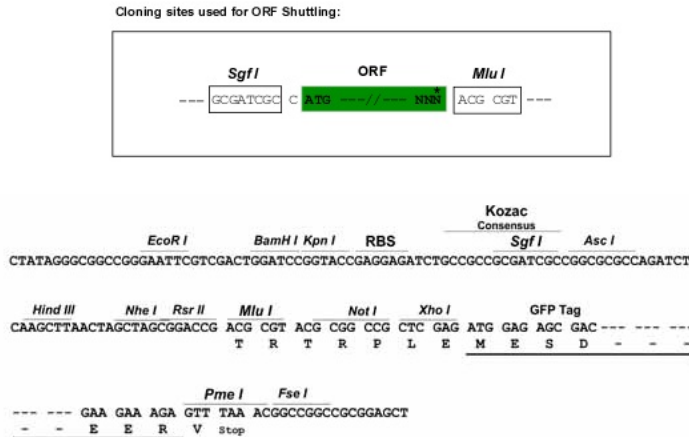
Protein Sequence: >MG226218 representing NM_008688
 Red=Cloning site Green=Tags(s)

MYSSPLCLTQDEFHPFIEALLPHVRAFAYTWFNLQARKRKYFKKHEKRM SKDEERAVKDELLGEKAEVKQ
 KWASRL LAKLRKDIRPECREDFLAVTGK KAPGCVLSNP DQKGMRRIDCLRQADKVWRDL VMVILFKG
 IPLESTDGERL VKAAAC AHPVLCVQPHHIGVAVKELDL YLAYFV RERDAEQSSSPRTGVGSDQEDSKPIT
 LDTTDFQE SFVTSGVFSVTELIQVSRTPVVTGTGPNFSLGELQGH LAYDLNPASAGMRRTL PSTSSSGSK
 RHKSGSM EEDVDTSPPG DYTS PNPSTSSRNWTE DIEGGI SSPVKKTEM DKS PFPNSPQDSPRL SSFT
 QHHRPVI AVHSGI ARSPHTSALHFPATPILPQTASTYFPHTAIRY PPHLNPQDPLKDLVSLACDPATQQ
 PGPPALRPTRPLQT VPLWD

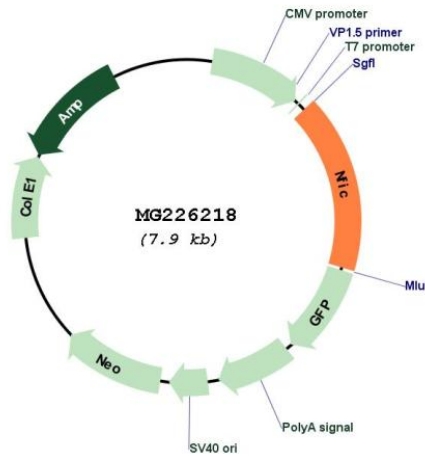
TRTRPLE - GFP Tag - V

Restriction Sites: SgfI-MluI

Cloning Scheme:



Plasmid Map:



ACCN: NM_008688

ORF Size:	1317 bp
OTI Disclaimer:	<p>Due to the inherent nature of this plasmid, standard methods to replicate additional amounts of DNA in E. coli are highly likely to result in mutations and/or rearrangements. Therefore, OriGene does not guarantee the capability to replicate this plasmid DNA. Additional amounts of DNA can be purchased from OriGene with batch-specific, full-sequence verification at a reduced cost. Please contact our customer care team at custsupport@origene.com or by calling 301.340.3188 option 3 for pricing and delivery.</p> <p>The molecular sequence of this clone aligns with the gene accession number as a point of reference only. However, individual transcript sequences of the same gene can differ through naturally occurring variations (e.g. polymorphisms), each with its own valid existence. This clone is substantially in agreement with the reference, but a complete review of all prevailing variants is recommended prior to use. More info</p>
OTI Annotation:	This clone was engineered to express the complete ORF with an expression tag. Expression varies depending on the nature of the gene.
Components:	The ORF clone is ion-exchange column purified and shipped in a 2D barcoded Matrix tube containing 10ug of transfection-ready, dried plasmid DNA (reconstitute with 100 ul of water).
Reconstitution Method:	<ol style="list-style-type: none"> 1. Centrifuge at 5,000xg for 5min. 2. Carefully open the tube and add 100ul of sterile water to dissolve the DNA. 3. Close the tube and incubate for 10 minutes at room temperature. 4. Briefly vortex the tube and then do a quick spin (less than 5000xg) to concentrate the liquid at the bottom. 5. Store the suspended plasmid at -20°C. The DNA is stable for at least one year from date of shipping when stored at -20°C.
RefSeq:	NM_008688.3 , NP_032714.1
RefSeq Size:	6295 bp
RefSeq ORF:	1320 bp
Locus ID:	18029
UniProt ID:	P70255
Cytogenetics:	10 39.72 cM
Gene Summary:	Recognizes and binds the palindromic sequence 5'-TTGGCNNNNNGCCAA-3' present in viral and cellular promoters and in the origin of replication of adenovirus type 2. These proteins are individually capable of activating transcription and replication.[UniProtKB/Swiss-Prot Function]