

## Product datasheet for **MG226213**

### Htr7 (NM\_008315) Mouse Tagged ORF Clone

#### Product data:

|                           |   |
|---------------------------|---|
| Product Type:             | Expression Plasmids                     |
| Product Name:             | Htr7 (NM_008315) Mouse Tagged ORF Clone |
| Tag:                      | TurboGFP                                |
| Symbol:                   | Htr7                                    |
| Synonyms:                 | 5-HT7                                   |
| Mammalian Cell Selection: | Neomycin                                |
| Vector:                   | pCMV6-AC-GFP (PS100010)                 |
| E. coli Selection:        | Ampicillin (100 ug/mL)                  |



[View online »](#)

**ORF Nucleotide Sequence:**

>MG226213 representing NM\_008315  
 Red=Cloning site Blue=ORF Green=Tags(s)

TTTTGTAATACGACTCACTATAGGGCGGCCGGGAATTCGTCGACTGGATCCGGTACCGAGGAGATCTGCC  
 GCC**CGGATCGCC**

ATGATGGACGTTAACAGCAGCGGCCGCCACCTCTACGGCCATCTCCGCTCTCTCATCTGCCGGAGG  
 TGGGGCGCAGGCTGCAGGACCTGAGCCCCGACGGTGGCGCCCACTCGGTGGTGAGCTCCTGGATGCCGCA  
 CCTGCTGAGCGGCTTCCAGAGGTGACAGCTAGCCCGGCCCCACCTGGGACGCGCCCCGGACAATGTC  
 TCCGGCTGCGGGGAGCAGATCAACTATGGCAGAGTCGAGAAAAGTTGTGATCGGCTCCATCCTGACGCTCA  
 TCACGCTGCTGACGATCGCGGGCAACTGCCTGGTGGTATCTCGGTGTGCTTTGTCAAGAAGCTCCGCCA  
 GCCCTCCAACCTGATTGTGTCCCTGGCGCTGGCTGACCTCTCGGTGGCCGTGGCGGTATGCCTTTC  
 GTTAGTGTACGGACCTCATCGGGGCAAGTGGATCTTCGGCCACTTCTTCTGCAACGTCTTCATCGCCA  
 TGGACGTCATGTCTGCACGGCCTCGATCATGACCCTGTGCGTGATCAGCATCGACAGGTACCTTGGGAT  
 CACCAGGCCCTCACGTACCCCGTGAGGCAGAATGGGAAATGTATGGCCAAAATGATTCTGTGCGTCTGG  
 CTCTCTCTGCCTCCATCACCTTACCTCCTCTCTTCGGATGGGCTCAGAAATGTGAACGATGACAAAGTGT  
 GCTTGATCAGCCAGGATTTGGCTACACGATCTACTCCACCGCAGTGGCGTTTTATATCCCCATGTCCGT  
 CATGCTGTTTATGTAATCAGATTTACAAGGCCGCCAGGAAGAGCGCAGCCAAACACAAGTTCTCAGGC  
 TTTCCACGCGTGCAGCCGGAGAGCGTATCTCCCTGAATGGCGTGGTGAACCTCCAGAAGGAGGTGGAAG  
 AGTGTGCGAACCTTTGAGACTGCTCAAACACGAAAGGAAAAACATTTCCATCTTCAAGAGGGAACAGAA  
 AGCAGCCACTACCTTGGGGATCATCGTGGGAGCCTTACGGTGTGCTGGCTGCCGTTTTTCTCTGTGCC  
 ACAGCAAGGCCCTTATCTGTGGCACCTCTGTAGCTGCATCCCCTGTGGTGGAGAGGACATGTCTGT  
 GGCTGGGCTATGCAAACCTCTCATTAAACCTTTTATATATGCTTCTTCAACCGGACCTGAGGACCAC  
 CTATCGTAGCCTACTCCAGTGCCAGTACCGGAATATCAACCGGAAGCTCTCTGCTGCAGGATGCACGAA  
 GCCCTGAAACTTGTGAGAGCCTGAGAGAAGCGAGTTTGTGCTACAAAACCTGTGACCCTGTGGAAAA  
 AAGTCATGATACA

AG**CGGACCG**ACGCGTACGCGGCCGCTCGAG - GFP Tag - GTTTAA

**Protein Sequence:**

>MG226213 representing NM\_008315  
 Red=Cloning site Green=Tags(s)

MMDVNSSGRPDLYGHLRSLILPEVGRRLQDLSPDGGAHSVVSSWMPHLLSGFPEVTASPAPTWDAPPDNY  
 SGCGEQINYGRVEKVVIGSILTLITLLTIAGNCLVVISVCFVKKLRQPSNYLIVSLALADLSVAVAVMPF  
 VSVTDLIGGKWIIFGHFFCNVFIAMDVMCTASIMTLCVISIDRYLGITRPLTYPVRQNGKCMAMKILSVW  
 LLSASITLPLFGWAQNVNDDKVLISQDFGYTIYSTAVAFYIPMSVMLFMYQIYKAARKSAAKHKFSG  
 FPRVQPEVVISLNGVVKLQKEVEECANLSRLKHERKNISIFKREKQAATLGIIVGAFTVCWLPFFLLS  
 TARPFIICGTSCSCIPLWVERTCLWLGYANSLINPFIYAFFNRDLRTTYRSLQLQCQYRNINRKL SAAGMHE  
 ALKLAERPERSEFVLQNCDHCGKKGHDT

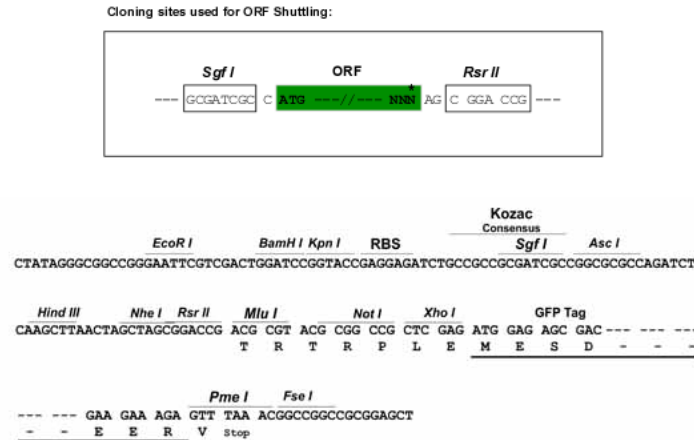
SGP**TRRRLE** - GFP Tag - V

**Chromatograms:**

[https://cdn.origene.com/chromatograms/ja3717\\_g02.zip](https://cdn.origene.com/chromatograms/ja3717_g02.zip)

**Restriction Sites:**

Sgfl-RsrII

**Cloning Scheme:**


**ACCN:** NM\_008315

**ORF Size:** 1344 bp

**OTI Disclaimer:** The molecular sequence of this clone aligns with the gene accession number as a point of reference only. However, individual transcript sequences of the same gene can differ through naturally occurring variations (e.g. polymorphisms), each with its own valid existence. This clone is substantially in agreement with the reference, but a complete review of all prevailing variants is recommended prior to use. [More info](#)

**OTI Annotation:** This clone was engineered to express the complete ORF with an expression tag. Expression varies depending on the nature of the gene.

**Components:** The ORF clone is ion-exchange column purified and shipped in a 2D barcoded Matrix tube containing 10ug of transfection-ready, dried plasmid DNA (reconstitute with 100 ul of water).

**Reconstitution Method:**

1. Centrifuge at 5,000xg for 5min.
2. Carefully open the tube and add 100ul of sterile water to dissolve the DNA.
3. Close the tube and incubate for 10 minutes at room temperature.
4. Briefly vortex the tube and then do a quick spin (less than 5000xg) to concentrate the liquid at the bottom.
5. Store the suspended plasmid at -20°C. The DNA is stable for at least one year from date of shipping when stored at -20°C.

**RefSeq:** [NM\\_008315.3](#)

**RefSeq Size:** 3095 bp

**RefSeq ORF:** 1347 bp

**Locus ID:** 15566

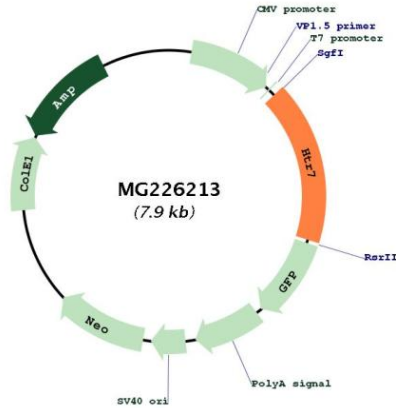
**UniProt ID:** [P32304](#)

**Cytogenetics:** 19 30.3 cM

**Gene Summary:**

This is one of the several different receptors for 5-hydroxytryptamine (serotonin), a biogenic hormone that functions as a neurotransmitter, a hormone, and a mitogen. The activity of this receptor is mediated by G proteins that stimulate adenylate cyclase.[UniProtKB/Swiss-Prot Function]

**Product images:**



Circular map for MG226213