

Product datasheet for **MG226208**

Dlgap1 (NM_001128180) Mouse Tagged ORF Clone

Product data:

Product Type:	Expression Plasmids
Product Name:	Dlgap1 (NM_001128180) Mouse Tagged ORF Clone
Tag:	TurboGFP
Symbol:	Dlgap1
Synonyms:	4933422O14Rik; 9630002F18; AI845682; AI848168; BB075781; D17Bwg0511e; Gkap; GKAP/SAPAP
Mammalian Cell Selection:	Neomycin
Vector:	pCMV6-AC-GFP (PS100010)
E. coli Selection:	Ampicillin (100 ug/mL)



[View online »](#)

ORF Nucleotide
Sequence:

>MG226208 representing NM_001128180
Red=Cloning site Blue=ORF Green=Tags(s)

TTTTGTAATACGACTCACTATAGGGCGGCCGGAATTCGTCGACTGGATCCGGTACCGAGGAGATCTGCC
GCC**CGCATCGCC**

ATGATCGACCTTTTTAAGGCTGAGTGGGTTTCTCAGTTTGCCTGCAAGTTTCCGAAATGGAAGGACTG
ACCAGGTTCCCCAGGATGAATGGTCAGGGTACACACCTCGCGGGAAAGACGACGAGATCCCGTGCCGGAG
GATGCGCAGTGGTAGCTACATCAAAGCCATGGGGATGAAGACAGTGGGGACTCGGACACGAGCCCCAAG
CCGCTCTCCAAGGTGGCTGCAAGAAGAGAAAGCTATCTCAAGGCCACGCAGCCGTCCTTACAGAGCTCA
CCACTCTCAAGATCTCCAATGAACACTCCCCAACTCCAGATCCGGAGTCACAGCTACCTGAGGGCCGT
AAGTGAAGTCTCCATCAACAGAAGCCTGGACAGCCTGGACCCTGCAGGCTTGCTCACGTACCAAAGTTC
CGCTCCAGAAACGAGAGCTACATGCGCGCCATGAGCACCATAAGTCAGGTGAGCGAGATGGAGGTGAACG
GCCAGTTCGAATCCGTGTGCGAGTCTGTGTTCAAGCAGCTGGAGTCGAGGCGGTGGAAGCGCTGGACCT
GCCCTGCCTGGCTGCTCCGCATGCGGAGCCACAGCTATGTGCGGGCCATCGAAAAGGGCTGCTCCAG
GACGACGAATGCGTGTGCTGCGGTGCTCCTCCCTCCACGCACAACCACCACCTGAGGACCATCCAGA
GCAGCACCGTGTATCTTGCATTACAACATATAAGAAGACACCACCTCCAGTCCCACCCAGAAGTACCAC
GAAACCTTTTATTTCTATCACAGCCAGAGTAGCACAGAGTCTGCGCAGGATGCCTACATGGACGGGCAA
GGCCAGCGCGGAGACATGATCAGCCAGTCTGGCCTCAGCAACTCCACCGAAAGTCTGGACAGTATGAAGG
CTCTCACGGTGGCCATCGAGGCTGCAAACGCCAGATTACCGCCAGCAAGTCAACATATGGGCAGCAA
TGCTGTGCTGTCAACCACCACCACCATAGCCACTGTCAACCAGGAGATAGGAAGAAAGACTTTAAG
AAAAACCGATGTCTGTCTATTGGGATACAGGTGGACGATGCCGAAGAGCCGGAGAAAATGGCAGAGAGTA
AGACGTCCAATAAGTCCAGTCCGTGGGAGTGAAGTAGAAGAAGAGAAGTGTCCGCGAGTTCCTCG
GTCCAACAGTGTGACAACCTGCAGTACAGGCCGACCTGGACTTCCATGATAATCTGGAAAATTCCTGGAG
TCTATAGAGGACAATTCGTGTCCTGGCCCCATGGCCAGACAGTTCGCGGGACGCCAGCACCTTACCG
TCAGTATCCAGGGTTCAGGAAACCACTATCATGCCTGTGCAGCCGATGACGACTTTGACACGGATTTTGA
CCCCTCTATCCTGCCTCCTCCGGACCCCTGGATTGACTCTATCACAGAAGACCCTCTGGAGGCCGTTCAA
AGGTCCGTGTGCCACCGGACGGCCACTGGTTCCTGAAGCTTCTCCAGGCAGAGCGGGACCCGATGGAAG
GGTGGTGAAGCTAATGGAGAGAGAAGAGAGGGAGAACAACCTCCAGAAGACATTCTAGGGAAAATCCG
AACCGCGGTGGGAGTGCCTCACTTCTCATGGCGCAGAAATCTACCAGTTCAGAGAAGTGTGTGAAGAG
AACCTGAATCCCAATGCTCACCCGAGACCCACTTCCCAGGACTTGGCGGGTTTTGGGACATGCTGCAGT
TGTCATAGAGAATATTAGTATGAAATTTGATGAACTTTCATCAGCTAAAGGCCAATAATTGGAAACAGAT
GGATCCTCTTGACAAGAAGGAGCGAAGGGCCCTCCTCCAGTGCCAAAGAAGCCGGCGAAGGGCCCCGCG
CCGCTGATCCGGGAGCGCTCGCTGGAGAGCTCGCAGCGCCAGGAGGCCGCAAGCGCCTGATGGCCGCCA
AGCGCGCCCGCTCGTCCGCCAGAACTCGGCCACCGAGAGCGCCGAGAGCATCGAGATCTACATCCCCGA
GGCGCAGACCCGGCTC

ACGCGTACGCGGCCGCTCGAG - GFP Tag - GTTTAA

Protein Sequence: >MG226208 representing NM_001128180
 Red=Cloning site Green=Tags(s)

MIDL FKA EWSSVCVQVSRNGRTDQVPQDEWSGYTPRGKDEIPCRMRSGSYIKAMGDEDSGSDTSPK
 PSPKVAARRESYLKATQPSL TEL TTLKI SNEHSPKLQIRSHSYLRVSEVSINRSLDSLDPAGLLTSPKF
 RSRNESYMRAMSTISQVSEMEVNGQFESVCEVFSELESQAVEALDLPLPGCFMRSHSYVRAIEKGCSQ
 DDECVSLRSSSPRRTTTTVRTIQSSTVSSCITTYKKT PPPVPPRTTTKPFISITAQSSTESAQDAYMDGQ
 GQRGDMISQGLSNSTESLDSMKALTA AIEAANAQIHGPASQHMGSNAAAVTTTTIATVTTEDRKKDFK
 KNRCLSIGIQVDDAEEPEKMAESKTSNKFQSVGVQVEEEKCFRRFTRSNSVTTAVQADLDFHDNLENSLE
 SIEDNSCPGPMARQFSRDASTSTVSIQGSNGHYHACAADDDFDTFDPSILPPDPWIDSITEDPLEAVQ
 RSVCHRDRGHWFLKLLQAERDRMEGWCKLMEREERENNPEDILGKIRTAVGSAQLLMAQKFYQFRELCEE
 NLNPNAPRPTSQDLAGFDMLQLSIENISMKFDLHQLKANNWKQMDPLDKKERRAPPPVPKPAKGA
 PLIRERSLESSQRQEARLRLMAAKRAASVRQNSATESAESIEIYIPEAQTRL

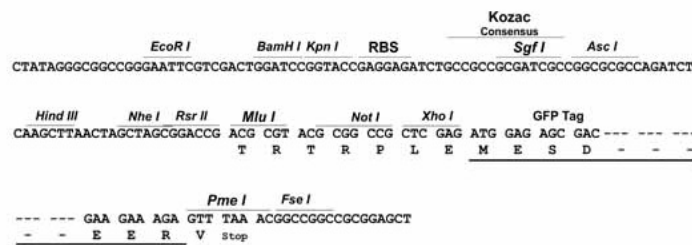
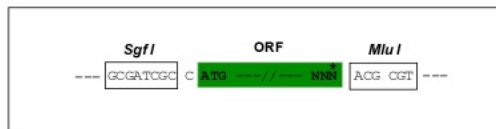
TRTRPLE - GFP Tag - V

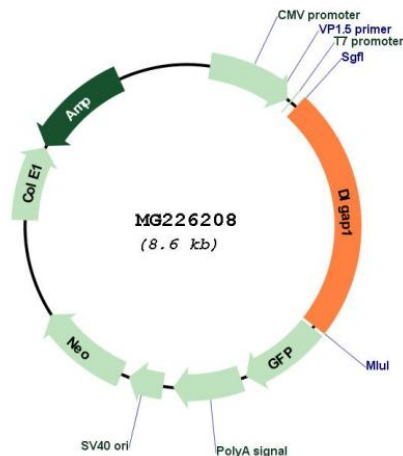
Restriction Sites:

Sgfl-MluI

Cloning Scheme:

Cloning sites used for ORF Shuttling:



Plasmid Map:


ACCN: NM_001128180

ORF Size: 2046 bp

OTI Disclaimer: The molecular sequence of this clone aligns with the gene accession number as a point of reference only. However, individual transcript sequences of the same gene can differ through naturally occurring variations (e.g. polymorphisms), each with its own valid existence. This clone is substantially in agreement with the reference, but a complete review of all prevailing variants is recommended prior to use. [More info](#)

OTI Annotation: This clone was engineered to express the complete ORF with an expression tag. Expression varies depending on the nature of the gene.

Components: The ORF clone is ion-exchange column purified and shipped in a 2D barcoded Matrix tube containing 10ug of transfection-ready, dried plasmid DNA (reconstitute with 100 ul of water).

Reconstitution Method:

1. Centrifuge at 5,000xg for 5min.
2. Carefully open the tube and add 100ul of sterile water to dissolve the DNA.
3. Close the tube and incubate for 10 minutes at room temperature.
4. Briefly vortex the tube and then do a quick spin (less than 5000xg) to concentrate the liquid at the bottom.
5. Store the suspended plasmid at -20°C. The DNA is stable for at least one year from date of shipping when stored at -20°C.

RefSeq: [NM_001128180.1](#), [NP_001121652.1](#)

RefSeq Size: 5306 bp

RefSeq ORF: 2049 bp

Locus ID: 224997
Cytogenetics: 17 40.85 cM
Gene Summary: Part of the postsynaptic scaffold in neuronal cells.[UniProtKB/Swiss-Prot Function]