

## Product datasheet for **MG226207**

### **Aplp2 (NM\_001102455) Mouse Tagged ORF Clone**

#### **Product data:**

Product Type:	Expression Plasmids
Product Name:	Aplp2 (NM_001102455) Mouse Tagged ORF Clone
Tag:	TurboGFP
Symbol:	Aplp2
Synonyms:	A1790698; APLP-2; CDEBP
Mammalian Cell Selection:	Neomycin
Vector:	pCMV6-AC-GFP (PS100010)
E. coli Selection:	Ampicillin (100 ug/mL)



[View online »](#)

**ORF Nucleotide Sequence:**

>MG226207 representing NM\_001102455  
 Red=Cloning site Blue=ORF Green=Tags(s)

TTTTGTAATACGACTCACTATAGGGCGGCCGGGAATTCGTCGACTGGATCCGGTACCGAGGAGATCTGCC  
 GCC**CGCATCGCC**

ATGGCGGCCACCGGGACCGCGGCCGCTGCGGCCACCGGCAAGCTTCTTGTCTGCTGCTGCTCGGGCTCA  
 CGGCGCCCCTGCGGCTCTGGCTGGCTACATAGAGGCTCTTGCAGCCAATGCTGGAACAGGCTTCGCTGT  
 TGCTGAGCCTCAGATTGCGATGTTCTGTGGGAAGCTGAATATGCATGTGAACATTCAGACTGGCAAATGG  
 GAGCCTGACCCAACAGGCACCAAGAGCTGCCTTGAACAAAGGAGGAGGTTCTTCAGTACTGCCAGGAGA  
 TATATCCAGAGCTGCAGATCACAAATGTGATGGAAGCAAACCAGCCAGTCAATATTGATAGTTGGTGCCG  
 AAGGGACAAAAGGCAGTGAAGAGTACATTGTTATACCATTCAAGTGTCTTGTGGGTGAATTTGTAAGT  
 GATGTCCTGCTAGTTCAGATAACTGCCAGTTTTCCACCAAGAGCGGATGGAGGTGTGTGAGAAGCACC  
 AGCGCTGGCACACGTTAGTCAAGGAGGCATGTCTGACTGAGGGGCTGACCTTATATAGCTATGGCATGCT  
 GCTGCCCTGCGGGTAGACCAGTCCATGGCACCAGTATGTGTGCTGCCCTCAGACAAAGACTGTTGAC  
 TCGGACTCGACTATGTCCAAAGAAGAGGAGGAAGAGGAAGAGGATGAAGAGGACGAAGAGGAAGACTATG  
 ATCTTGATAAAAAGTGAATTTCTACTGAAGCAGATTTGGAAGACTTCACAGAAGCAGCAGAGATGAGGA  
 AGAAGAGGATGAGGAGGAAGGGGAGGAAGTGGTGAAGACCGTACTACTATGACCCCTTTAAAGGA  
 GACGATTACAATGAGGAGAAATCCAACCGAACCCAGCAGCGAGGGCACCATTTAGACAAGGAGATTGTTT  
 ACGATGTTAAAGCTGTCTGCTCCAGGAGGCCATGACGGGGCCCTGCCGGGCTGTGATGCCTCGTTGGTA  
 CTTGACCTCTCAAGGGAAAGTGCCTACGCTTATATATGGCGGCTGCGGCGCAACAGGAACAATTTT  
 GAGTCTGAGGATTATTGTATGGCTGTGTGTAAGCGATGATCCCCGACTCCCCTGCCAACCAATGATG  
 TTGATGTGATTTTGAACCTCAGCGGATGATAATGAGCACGCCGCTTCCAGAAGGCTAAGGAACAGCT  
 GGAAATTCGACATCGAAACCGAATGGACAGGGTAAAGAAGGAATGGGAAGAGGCAGAACTTCAAGCCAAG  
 AACCTCCCAAGACAGAAAGACAGACCCTCATCCAGCATTTCGAAGCTATGGTTAAAGCTTTAGAGAAAG  
 AAGCAGCCAGTGAGAAGCAGCAGCTTGTGGAAACCCATCTGGCCCGAGTAGAAGCCATGTGAATGACCG  
 CCGACGCATAGCTCTGGAAAATTACCTGGCTGCCCTGCAGTCTGACCCACCTCGGCCACATCGCATTCTT  
 CAAGCTCTTCGTCGTTACGTCCGTGCTGAGAACAAGATCGCCTGCATACCATTTCGTCATTACCAACACG  
 TGTTGGCTGTTGACCCAGAAAAGGCCGCCAGATGAAATCCCAGGTGATGACACACCTCCATGTGATTGA  
 AGAAAGAAGGAACCAAAGTCTTTCTCTTGTACAAAGTTCCTTATGTTGCTCAAGAAATCAAGAGGAA  
 ATTGATGAGCTCCTTCAGGAACAGCGAGCGGATATGGACCAATTTACCTCCTCCATCTCAGAGAACCCTG  
 TGGATGTCCGGGTGAGCTCTGAGGAGAGTGAGGAGATCCCGCCGTTCCACCCTCTCCATCCCTTCCATC  
 CTTGTCTGAGAATGAAGGCTCTGGAATGGCAGAACAAGACGGGGGACTGATTGGTGCAGAAGAAAAGTG  
 ATTAACAGCAAGAATAAAATGGATGAAAATATGGTCATTGACGAGACTCTGGATGTTAAGGAAATGATTT  
 TCAATGCTGAGAGAGTTGGAGGCCTTGAGGAAGAGCCGGAATCGGTGGGACCTTTAAGGGAGGATTCAG  
 TTTGAGCAGCAATGCCCTTATTGGCTTGTGGTTATCGCAGTGGCCATTGCTACGGTCATCGTTATCAGC  
 CTGGTGTGCTGAGGAAGAGGCAGTACGGCACCATCAGCCACGGGATTGTGGAGGTTGACCCAATGCTCA  
 CCCCAGAAGAGCGTCACCTGAACAAGATGCAGAACCATGGTTATGAAAACCAACCTACAATACCTGGA  
 GCAGATGCAGATT

**ACGCGT**ACGCGGCCGCTCGAG – GFP Tag – GTTTAA

Protein Sequence: >MG226207 representing NM\_001102455  
 Red=Cloning site Green=Tags(s)

```

MAATGTAAAAATGKLLVLLLLGLTAPAAALAGYIEALAANAGTGFVAEAPQIAMFCGKLNMHVNIQTGKW
EPDPTGKTKSCLGTKEEVLQYCQEIYPELQITNVMEANQPVNIDSWCRRDKRQCKSHIVIPFKLVGEFVS
DVLLVPDNCQFFHQERMEVCEKHQRWHTLVKEACLTEGLTLYSYGMLLPCGVDFHGTVEYCCPQTKTVD
SDSTMSKEEEEEEEEEDEEEDYDLKSEFPTEADLEDFTEAAADEEEEEEEVEEDRDYYYPFKG
DDYNEENPTEPSSEGTISDKEIVHDVKAVCSQEAMTGPCRAVMRWFYFDLSKGKCVRFIYGGCGGNRNNF
ESEDYCMVACKAMIPPTPLPTNDVDVYFETSADDNEHARFQKAKEQLEIRHRNRMDRVKKEWEEAELQAK
NLPKTERQTLIQHFQAMVKALEKEAASEKQQLVETHLARVEAMLNDRRIALENYLAALQSDPPRPHRIL
QALRRYVRAENKDLHTIRHYQHVLAVDPEKAAQMKSQVMTHLHVIEERRNQLSLLYKVPYVAQEIQEE
IDELLQEQRADMDFSSISENPVDVRSSESEEEIPPFHPLHPFSLSENEGSGMAEQDGLIGAEKVK
INSKNMMDENMVIDETLDVKEMIFNAERVGGLEEEPEVSGPLREDFSLSSNALIGLLVIAVAIATVIVIS
LVMRLKRQYGTISHGIVEVDPMLTPEERHLNKMQNHYENPTYKYLEQMQUI
  
```

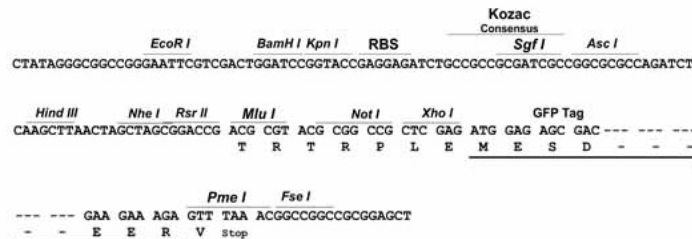
TRTRPLE - GFP Tag - V

Chromatograms: [https://cdn.origene.com/chromatograms/ja2351\\_f04.zip](https://cdn.origene.com/chromatograms/ja2351_f04.zip)

Restriction Sites: SgfI-MluI

Cloning Scheme:

Cloning sites used for ORF Shutting:

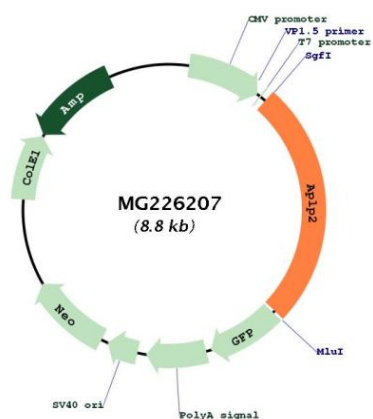


ACCN: NM\_001102455

ORF Size: 2253 bp

<b>OTI Disclaimer:</b>	<p>Due to the inherent nature of this plasmid, standard methods to replicate additional amounts of DNA in E. coli are highly likely to result in mutations and/or rearrangements. Therefore, OriGene does not guarantee the capability to replicate this plasmid DNA. Additional amounts of DNA can be purchased from OriGene with batch-specific, full-sequence verification at a reduced cost. Please contact our customer care team at <a href="mailto:custsupport@origene.com">custsupport@origene.com</a> or by calling 301.340.3188 option 3 for pricing and delivery.</p> <p>The molecular sequence of this clone aligns with the gene accession number as a point of reference only. However, individual transcript sequences of the same gene can differ through naturally occurring variations (e.g. polymorphisms), each with its own valid existence. This clone is substantially in agreement with the reference, but a complete review of all prevailing variants is recommended prior to use. <a href="#">More info</a></p>
<b>OTI Annotation:</b>	This clone was engineered to express the complete ORF with an expression tag. Expression varies depending on the nature of the gene.
<b>Components:</b>	The ORF clone is ion-exchange column purified and shipped in a 2D barcoded Matrix tube containing 10ug of transfection-ready, dried plasmid DNA (reconstitute with 100 ul of water).
<b>Reconstitution Method:</b>	<ol style="list-style-type: none"> <li>1. Centrifuge at 5,000xg for 5min.</li> <li>2. Carefully open the tube and add 100ul of sterile water to dissolve the DNA.</li> <li>3. Close the tube and incubate for 10 minutes at room temperature.</li> <li>4. Briefly vortex the tube and then do a quick spin (less than 5000xg) to concentrate the liquid at the bottom.</li> <li>5. Store the suspended plasmid at -20°C. The DNA is stable for at least one year from date of shipping when stored at -20°C.</li> </ol>
<b>RefSeq:</b>	<a href="#">NM_001102455.2</a>
<b>RefSeq Size:</b>	3658 bp
<b>RefSeq ORF:</b>	2256 bp
<b>Locus ID:</b>	11804
<b>Cytogenetics:</b>	9 16.66 cM
<b>Gene Summary:</b>	<p>May play a role in the regulation of hemostasis. The soluble form may have inhibitory properties towards coagulation factors. May interact with cellular G-protein signaling pathways. May bind to the DNA 5'-GTCACATG-3'(CDEI box). Inhibits trypsin, chymotrypsin, plasmin, factor XIA and plasma and glandular kallikrein (By similarity). Modulates the Cu/Zn nitric oxide-catalyzed autodegradation of GPC1 heparan sulfate side chains in fibroblasts. [UniProtKB/Swiss-Prot Function]</p>

Product images:



Circular map for MG226207