

## Product datasheet for **MG226189**

### Enah (NM\_008680) Mouse Tagged ORF Clone

#### Product data:

Product Type:	Expression Plasmids
Product Name:	Enah (NM_008680) Mouse Tagged ORF Clone
Tag:	TurboGFP
Symbol:	Enah
Synonyms:	Mena; NDPP-1; Ndpp1; WBP8
Mammalian Cell Selection:	Neomycin
Vector:	pCMV6-AC-GFP (PS100010)
E. coli Selection:	Ampicillin (100 ug/mL)



[View online »](#)

**ORF Nucleotide Sequence:**

>MG226189 representing NM\_008680  
 Red=Cloning site Blue=ORF Green=Tags(s)

TTTTGTAATACGACTCACTATAGGGCGGCCGGAATTCGTCGACTGGATCCGGTACCGAGGAGATCTGCC  
 GCC**CGCATCGCC**

ATGAGTGAACAGAGTATCTGTCAAGCAAGAGCTGTGTGATGGTCTATGATGATGCCAATAAGAAGTGGG  
 TGCCAGCTGGTGGCTCAACTGGGTTCAAGCAGAGTACATATATATACCCATACAGGCAACAACACATTCAG  
 AGTTGTGGGCAGAAAGATTCAAGACCATCAGGTTGTGATAAACTGTGCCATTCTAAAGGGCTGAAGTAC  
 AATCAAGCTACACAGACTTTCCACCAATGGAGGGATGCTAGACAGGTGTATGGTCTCAACTTTGGCAGCA  
 AAGAGGATGCCAATGTCTTCGCAAGTGCCATGATGCATGCCTTAGAAGTGTAAATTCACAGGAAGCAGT  
 GTTCTATTTAGGGCCAACATTGCCTAGACAAAATTCACAGCTACCTGCTCAAGTTCAAAATGGCCCATCC  
 CAAGAAGAGCTGGAAATCCAGAGAAGGCAACTGCAAGAACAGCAGCGACAGAAGGAACTGGAGAGGGAAA  
 GAATGGAGAGGGAAAGGTTGGAGAGAGAACGACTAGAACGAGAGAGGCTAGAGAGGGAGCGCCTGGAACA  
 AGAGCAGCTGGAGCGGCAGCGGCAGGAAAGGGAGCACGTGGAGCGGCTGGAGAGGGAGAGGCTGGAGCGC  
 CTGGAGCGGAGAGAGGAGCGGAGCGGAGCGGAGAGCGCTGGAGCAGCTGGAGCGGGAGCAAGTGGAGTGGG  
 AGCGAGAGCGCAGAATGTCCAATGCTGCTCCATCTTCAGACAGCTCCCTGTCTAGTGTCTCACTTCTCTGA  
 GTATTCAGTGGCAGCCGCTTCGGCACCTCCTCCATCATATGCTAAAGTCATCTCAGCTCCGGTGTCA  
 GACGCCACTCCTGATTACGCTGTAGTACTGCTTTGCCACCTACTTCCACACCCCTACACCACCACTGA  
 GACACGACGACACGTTTTGCAACATCTTAGGTTACGCTTCCACCCTGTTCTTCCCCATTACGCTAC  
 AGTTCTCGTCTCTCAACAAAATCTCGACCTTCTTCTCCTGTGAACACACCTCTTCTCAGCCTCCA  
 GCTGCGAAGTCTGTGCCTGGCTACTTCCAATTTCTCGCCCTCCCTCCATCTCCTCCAATAATGATTA  
 GCAGCCCCCTGGCAAAGCTACTGGCCACGGCCTGTCTTCCCCTTTGTGTCTCTCTGTGCCCCA  
 AATGCCTCCGTACCAACAGCACCCAATGGGTCGCTAGACTCTGTAAACATACCCAGTGTCTCCACCGCT  
 ACCTCAGGGCCAGCAGCGCCACCTCCGCGCCACCGCCACCGCCACCGCCGCGCCACCACCACCGCCG  
 TGCCACCGCCGCGCTGCCTCCCCTCGCCTCACTCTCACACTGTGGATCACAGGCTTCTCCTCCTCCAGG  
 CACCCCTCTTGCCTCAACTCCCTCATCAAGCCAGTGTCTCCCTTCTCCCTCTGCAGCTGCCCTGCC  
 TCTGGGAGACCCCTCTAAATCTGAGCTGGGAGACTCCTCTGCTTCCGAGCCAGGCTTGCAGGCAGCCT  
 CTCAGCCGCGGAGTCCCAACCCACAGGGCCTTGTCTTGGGACCACCTGCACCTCCGCCACCACCCCC  
 TCTCCCATCAGGCCCTGCCTACGCTCAGCACTCCTCCTCCCCAGGACCCCTCCACCACCTCCTACTG  
 CCATCCACTGGTCTCCTCCTCCACCCCTCCACCACCCCTCTCCTAATCAAGCTCCTCCCCCTCCTC  
 CCCACCTCCTGCCCTCCCCTCCCCGATCTGGAATTTCTCTGGATCCACGTCAGAAGACAATCGCCC  
 TTTAACTGGACTTGCAGCTGCAATTGCGGGAGCAAACTTAGGAAAGTGTCCCGGTGGAGGATGGCTCT  
 TTCCCAGTGGAGGGAATACTGGGAGTGTGAGCTTGGCCTCATCAAAGCAGACGCTGGGCGTGGGAATG  
 GACCTCTTCTCTAGGGGTAGTGGCTAATGGAAGAAATGAGTGCCTGCTGGCCAGGAGGAGAAGAAT  
 TGCTGAGAAGGGATCAACAATAGAACAGAAACAAAAGGAAGACAGAAATGAAGATGCAGAGCCTATAACT  
 GCTAAGGCCCATCAACAAGTACACCTGAACCAACCAGAAAACCTTGGGAAAGAACAACACAATGAACG  
 GCAGTAAGTACCTGTCTCCTCAGACCCAAATCCACACCTTCTCACAGCCAAGTGCCAATGGAGTCCA  
 GACAGAAGGCCTTGACTATGACAGGCTGAAGCAGGACATTTTAGATGAGATGAGAAAAGAGCTGGCAAAG  
 CTGAAGGAGGAGCTTATTGACGCAATCAGGCAGGAGCTGAGCAAGTCGAACACTGCA

**ACGCGT**ACGCGGCCGCTCGAG – GFP Tag – GTTTAA

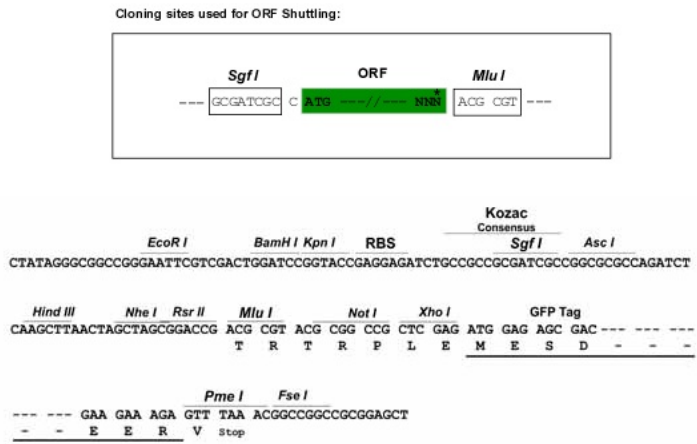
**Protein Sequence:** >MG226189 representing NM\_008680  
Red=Cloning site Green=Tags(s)

```
MSEQSIQARAAMVYDDANKKWVPAGGSTGFSRVHIYHHTGNNTFRVVGRKIQDHQVVINCAIPKGLKY
NQATQTFHQWRDARQVYGLNFGSKEDANVFASAMMHALEVLNSQEAVFYLGPTLPRQNSQLPAQVQNGPS
QEELIQRRLQEQQRQKELERERMERERLERERLERERLERERLEQEQLERQREHVERLERERLER
LERERQERERERLEQLEREQVEWERERRMSNAAPSSDSSLSSAPLPEYSSCQPPSAPPPSYAKVISAPVS
DATPDYAVVTALPPTSTPPTPLRHAATRFATSLGSAFHPVLPHYATVPRPLNKNRSPSSPVNTSSQPP
AAKSCAWPTSNFSPLPPSPPIMI SSPPGKATGPRPVLPVCVSSVPVQMPSPAPNGSLDSVTYPVSPPP
TSGPAAPPPPPPPPPPPPPPLPPPLPLASLSHCGSQASPPPGTPLASTPSSKPSVLPSPSAAAPA
SAETPLNPELGDSSASEPGLQAASQPAESPTPQGLVLPAPPPPPPLPSGPAYASALPPPPGPPPPPL
PSTGPPPPPPPPPLPNQAPPPPPPPAPPLPASGIFSGTSEDNRPLTGLAAAIAGAKLRKVSERVEDGS
FPGGGNTGSVSLASSKADAGRNGPLPLGGSGLMEEMSALLARRRRIAIEKGSTIETEQRKEDNEDAEPIT
AKAPSTSTPEPTRKPWERTNTMNGSKSPVISRPKSTPSSQPSANGVQTEGLDYDRLKQDILDENRKLAK
LKEELIDAIRQELSKSNTA
```

TRTRPLE - GFP Tag - V

**Restriction Sites:** SgfI-MluI

**Cloning Scheme:**



**ACCN:** NM\_008680

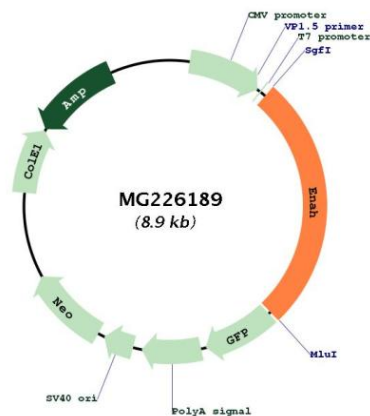
**ORF Size:** 2367 bp

**OTI Disclaimer:** The molecular sequence of this clone aligns with the gene accession number as a point of reference only. However, individual transcript sequences of the same gene can differ through naturally occurring variations (e.g. polymorphisms), each with its own valid existence. This clone is substantially in agreement with the reference, but a complete review of all prevailing variants is recommended prior to use. [More info](#)

**OTI Annotation:** This clone was engineered to express the complete ORF with an expression tag. Expression varies depending on the nature of the gene.

<b>Components:</b>	The ORF clone is ion-exchange column purified and shipped in a 2D barcoded Matrix tube containing 10ug of transfection-ready, dried plasmid DNA (reconstitute with 100 ul of water).
<b>Reconstitution Method:</b>	<ol style="list-style-type: none"> <li>1. Centrifuge at 5,000xg for 5min.</li> <li>2. Carefully open the tube and add 100ul of sterile water to dissolve the DNA.</li> <li>3. Close the tube and incubate for 10 minutes at room temperature.</li> <li>4. Briefly vortex the tube and then do a quick spin (less than 5000xg) to concentrate the liquid at the bottom.</li> <li>5. Store the suspended plasmid at -20°C. The DNA is stable for at least one year from date of shipping when stored at -20°C.</li> </ol>
<b>RefSeq:</b>	<u>NM_008680.3</u>
<b>RefSeq Size:</b>	4231 bp
<b>RefSeq ORF:</b>	2370 bp
<b>Locus ID:</b>	13800
<b>Cytogenetics:</b>	1 84.93 cM
<b>Gene Summary:</b>	Ena/VASP proteins are actin-associated proteins involved in a range of processes dependent on cytoskeleton remodeling and cell polarity such as axon guidance and lamellipodial and filopodial dynamics in migrating cells. ENAH induces the formation of F-actin rich outgrowths in fibroblasts. Acts synergistically with BAIAP2-alpha and downstream of NTN1 to promote filipodia formation.[UniProtKB/Swiss-Prot Function]

### Product images:



Circular map for MG226189