

## Product datasheet for **MG226174**

### **Ptger4 (NM\_008965) Mouse Tagged ORF Clone**

#### **Product data:**

Product Type:	Expression Plasmids
Product Name:	Ptger4 (NM_008965) Mouse Tagged ORF Clone
Tag:	TurboGFP
Symbol:	Ptger4
Synonyms:	EP4; Ptgerep4
Mammalian Cell Selection:	Neomycin
Vector:	pCMV6-AC-GFP (PS100010)
E. coli Selection:	Ampicillin (100 ug/mL)



[View online »](#)

**ORF Nucleotide Sequence:**

>MG226174 representing NM\_008965  
 Red=Cloning site Blue=ORF Green=Tags(s)

TTTTGTAATACGACTCACTATAGGGCGGCCGGAATTCGTCGACTGGATCCGGTACCGAGGAGATCTGCC  
 GCC**GCGATCGCC**

ATGGCTGAGGTTGGAGGTACCATTCTAGATCGAACCGTGAGCTCCAACGCTGTGTACTAACCACCA  
 CCATCATGTCCATCCCCGAGTCAACGCGTCTTCTCCTCCACTCCGGAGAGGCTGAACAGCCCGGTGAC  
 CATTCCCGCAGTGATGTTTCATCTTCGGGGTGGTGGCAACCTGGTGGCCATCGTAGTATTGTGCAAGTCG  
 CGCAAGGAGCAGAAAGAGACGACCTTTTACACTTAGTATGTGGGCTGGCTGTCAGTACTTCTGGGCA  
 CCTTGTGGTAAGCCCGTGACCATCGCCACATACATGAAGGGCCAGTGGCCCGGAGACCAGGCACTGTG  
 TGAATAAGCACCTTTCATCTACTTTTCTCGGTCTGTCGGGTCTCAGCATCATCTGTGCCATGAGCATC  
 GAGCGTACTGGCCATCAACCACGCTACTTCTACAGCCACTACGTGGACAAGCGGCTGGCCGGCCTCA  
 CACTCTTCGCCATCTATGCATCTAACGTGCTGTTCTGCGCGCTGCCAACATGGGCTGGCAGATCCGA  
 GCGGCAGTACCCGGCACCTGGTCTTCATCGACTGGACCACCAACGTAACGGCCTACGCCGCTTCTCT  
 TACATGTACGCCGCTTACGCTCCTTCTCATCCTTGCCACCGTCTGCAACGTGCTGGTGTGGCGCG  
 CGCTGCTCCGCATGCACCGCAGTTCATGCGCCGACCTCGTTGGGCACGGAGCAGCACCATGCGGCTGC  
 CGCCGCCGCGGTAGCTTCGGTGGCTGTGGGGCCACGCTGGGGCCTCCCAGCCCTGCAGCGCCTCAGC  
 GACTTTCGCCGCCGAGGAGTTCCGGCGCATCGCGGGTGGGAGATCCAGATGGTCATCTTACTCATCG  
 CCACCTCTCTGGTGGTGCATCTGTCCATTCCGCTCGTGGTGGGAGTGTTCATTAACCAAGTATATCA  
 GCCAACGTGGTAAAGACATCAGCAGAAACCCAGATTTGAGGCCATCAGGATTGCTTCTGTGAACCC  
 ATCCTGGACCCCTGGATTACATCTTCTCGGAAGACTGTGCTCAGTAAAGCCATAGAGAAGATCAAGT  
 GCCTCTTCTGCCGATTGGCGGTTCCGGCAGAGACAGCTCGGCCAGCACTGCTCAGAGATCGGAGGAC  
 ATCTTCCGCCATGTCCGGCCACTCTCGCTCCTTCTCGCCGGGAGTTAAAGGAGATCAGCAGCAGTCC  
 CAGACCCTCTGTACCTGCCAGACCTGACTGAAAGCAGCCTCGGAGGCAGGAATTTGCTTCCAGTTTCGC  
 ATGGCATGGGCTGACCCAAGCAGACACCCTCGCTGAGAACTTTGCGAATTTCCGAGACCTCAGACTC  
 TCCCAGGGCCAGGACTCTGAGAGTGTCTGTTGGTGGATGAGGTTAGTGGGAGCCACAGAGAGGAGCCT  
 GCCTCTAAAGGAACTCTCTGCAAGTCACATCCCCAGTAAACTCTGAAATTATCTGAAAAATGTATA

AG**GCGACCG**ACGCGTACGCGGCCGCTCGAG - GFP Tag - GTTAA

**Protein Sequence:**

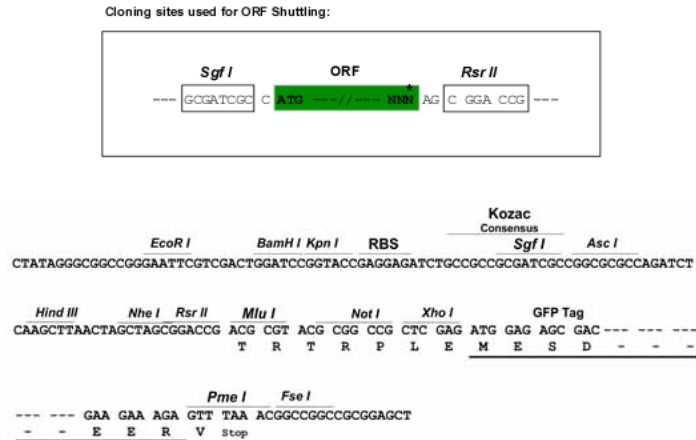
>MG226174 representing NM\_008965  
 Red=Cloning site Green=Tags(s)

MAEVGGTIPRSNRELQRCVLLTTTIMSIPGVNASFSSTPERLNSPVTIPAVMFIQVGVNGLVAIVLCKS  
 RKEQKETTFFYTLVCLAVTDLLGLTLLVSPVTIATYMKGQWPGDQALCDYSTFILLFFGLSGLSIICAMSI  
 ERYLAINHAYFYSHYVDKRLAGLTLFAIYASNVLFCALPNMGLGRSERQYPGTWCFIDWTTNVTAYAFS  
 YMYAGFSSFLILATVLCNVLVCGALLRMHRQFMRRTSLGTEQHHAASVAVACRGHAGASPALQRLS  
 DFRRRRSFRRIAGAEIQMVILLIATSLVVLICSIPLVVRVFINQLYQPNVVKDISRNPDLQAIRIASVNP  
 ILDPWIYILLRKTVLSKAIEKIKCLFCRIGGSGRDSQAHCSESRRSSAMSGHSRSLARELKEISSTS  
 QTLLYLPDLTESSLGGRNLLPGSHGMGLTQADTTLRTRLRISETSDSSQGDSESVLLVDEVSGSHREEP  
 ASKGNLQVTFPSETLKLSEKCI

SGP**TRRRLE** - GFP Tag - V

**Restriction Sites:**

Sgfl-RsrII

**Cloning Scheme:**


**ACCN:** NM\_008965

**ORF Size:** 1539 bp

**OTI Disclaimer:** The molecular sequence of this clone aligns with the gene accession number as a point of reference only. However, individual transcript sequences of the same gene can differ through naturally occurring variations (e.g. polymorphisms), each with its own valid existence. This clone is substantially in agreement with the reference, but a complete review of all prevailing variants is recommended prior to use. [More info](#)

**OTI Annotation:** This clone was engineered to express the complete ORF with an expression tag. Expression varies depending on the nature of the gene.

**Components:** The ORF clone is ion-exchange column purified and shipped in a 2D barcoded Matrix tube containing 10ug of transfection-ready, dried plasmid DNA (reconstitute with 100 ul of water).

**Reconstitution Method:**

1. Centrifuge at 5,000xg for 5min.
2. Carefully open the tube and add 100ul of sterile water to dissolve the DNA.
3. Close the tube and incubate for 10 minutes at room temperature.
4. Briefly vortex the tube and then do a quick spin (less than 5000xg) to concentrate the liquid at the bottom.
5. Store the suspended plasmid at -20°C. The DNA is stable for at least one year from date of shipping when stored at -20°C.

**RefSeq:** [NM\\_008965.2](#), [NP\\_032991.1](#)

**RefSeq Size:** 2442 bp

**RefSeq ORF:** 1542 bp

**Locus ID:** 19219

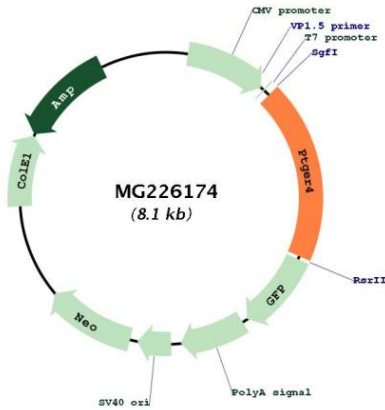
**UniProt ID:** [P32240](#)

**Cytogenetics:** 15 1.99 cM

**Gene Summary:**

Receptor for prostaglandin E2 (PGE2). The activity of this receptor is mediated by G(s) proteins that stimulate adenylate cyclase. Has a relaxing effect on smooth muscle. May play an important role in regulating renal hemodynamics, intestinal epithelial transport, adrenal aldosterone secretion, and uterine function.[UniProtKB/Swiss-Prot Function]

**Product images:**



Circular map for MG226174