

Product datasheet for **MG226154**

Scn4b (NM_001013390) Mouse Tagged ORF Clone

Product data:

Product Type:	Expression Plasmids
Product Name:	Scn4b (NM_001013390) Mouse Tagged ORF Clone
Tag:	TurboGFP
Symbol:	Scn4b
Synonyms:	Gm1471
Mammalian Cell Selection:	Neomycin
Vector:	pCMV6-AC-GFP (PS100010)
E. coli Selection:	Ampicillin (100 ug/mL)
ORF Nucleotide Sequence:	>MG226154 representing NM_001013390 Red=Cloning site Blue=ORF Green=Tags(s)

TTTTGTAATACGACTCACTATAGGGCGCCGGAATTCGTCGACTGGATCCGGTACCGAGGAGATCTGCC
GCC**CGATCGCC**

ATGTCCCGGGCTGGGAACCGAGGCAATACTCAGGCGAGATGGCTGGGCACTGGGCTTTTGGGTCTCTTCC
TGCTTCCCATGTACCTGTCGTTGGAGGTATCTGTGGAAAGGCCACCACCATCTACGCTATTAACGGCTC
ATCGATCTGCTGCCCTGCACCTTCTCCAGCTGTTATGGCTTTGAGAACCTCTACTTCAAGTGGTCCTAC
AATAACAGCGAAACATCCAGGATTCTCATCGACGGGATCGTGAAGAACGATAAGTCTGACCCTAAGGTGA
GAGTGAAGGATGATGATCGAATCACCTAGAGGGCTCCACCAAGGAGAAGACGAATAACATCTCCATCCT
CTTGAGTGACCTGGAGTTCAGTGACACGGGAGATACACCTGCTTCGTGAGGAACCCCAAGGAGAAGGAC
TTGAACAACCTCTGCCACCATCTTCTCCAAGTGGTTGATAAATTGGAAAAAGTGGACAACACGGTGACTC
TCATCATCCTGGCTGTGGTGGGCGGGTCAATTGGACTTCTGTTTGCATCCTTCTGCTGAAGAAGCTCAT
CACCTTCATCCTGAAGAAGACCCGAGAGAAGAAGAAGGAGTGTCTCGTGAGTTTCTCTGGGAATGACAAC
ACAGAGAACGGGTTGCCTGGCTCCAAGGCAGAAGAGAAGCCACCCACAAAAGTG

ACGCGTACGCGGCCGCTCGAG - GFP Tag - GTTTAA



[View online »](#)

Protein Sequence: >MG226154 representing NM_001013390
Red=Cloning site Green=Tags(s)

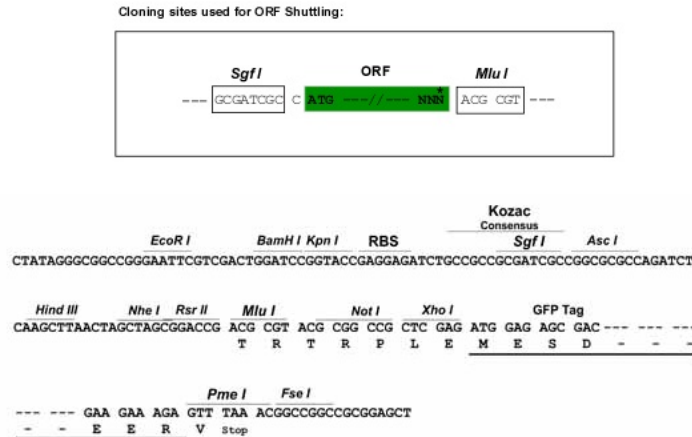
MSRAGNRGNTQARWLGTGLLGLFLLPMYLSLEVSVGKATTIYAINGSSILLPCTFSSCYGFENLYFKWSY
 NNSETSRILIDGIVKNDKSDPKVRVKDDDRITLEGSTKEKTNNISILLSDFESDTGRYTCFVRNPKEKD
 LNNSATIFLQVVDKLEKVDNTVTLIILAVVGGVIGLLVCILLKKLITFILKKTREKKKECLVSSSGNDN
 TENGLPGSKAEKPPPTKV

TRTRPLE - GFP Tag - V

Chromatograms: https://cdn.origene.com/chromatograms/ja1699_g06.zip

Restriction Sites: SgfI-MluI

Cloning Scheme:



ACCN: NM_001013390

ORF Size: 684 bp

OTI Disclaimer: The molecular sequence of this clone aligns with the gene accession number as a point of reference only. However, individual transcript sequences of the same gene can differ through naturally occurring variations (e.g. polymorphisms), each with its own valid existence. This clone is substantially in agreement with the reference, but a complete review of all prevailing variants is recommended prior to use. [More info](#)

OTI Annotation: This clone was engineered to express the complete ORF with an expression tag. Expression varies depending on the nature of the gene.

Components: The ORF clone is ion-exchange column purified and shipped in a 2D barcoded Matrix tube containing 10ug of transfection-ready, dried plasmid DNA (reconstitute with 100 ul of water).

Reconstitution Method:

1. Centrifuge at 5,000xg for 5min.
2. Carefully open the tube and add 100ul of sterile water to dissolve the DNA.
3. Close the tube and incubate for 10 minutes at room temperature.
4. Briefly vortex the tube and then do a quick spin (less than 5000xg) to concentrate the liquid at the bottom.
5. Store the suspended plasmid at -20°C. The DNA is stable for at least one year from date of shipping when stored at -20°C.

RefSeq: [NM_001013390.3](#)

RefSeq Size: 4244 bp

RefSeq ORF: 687 bp

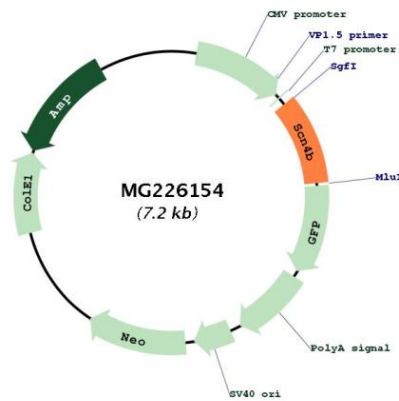
Locus ID: 399548

UniProt ID: [Q7M729](#)

Cytogenetics: 9 A5.2

Gene Summary: Modulates channel gating kinetics. Causes negative shifts in the voltage dependence of activation of certain alpha sodium channels, but does not affect the voltage dependence of inactivation. Modulates the susceptibility of the sodium channel to inhibition by toxic peptides from spider, scorpion, wasp and sea anemone venom (By similarity).[UniProtKB/Swiss-Prot Function]

Product images:



Circular map for MG226154