

## Product datasheet for **MG226143**

### Cpa3 (NM\_007753) Mouse Tagged ORF Clone

#### Product data:

Product Type:	Expression Plasmids
Product Name:	Cpa3 (NM_007753) Mouse Tagged ORF Clone
Tag:	TurboGFP
Symbol:	Cpa3
Synonyms:	MC-C; MC-CPA; mMC-C
Mammalian Cell Selection:	Neomycin
Vector:	pCMV6-AC-GFP (PS100010)
E. coli Selection:	Ampicillin (100 ug/mL)
ORF Nucleotide Sequence:	>MG226143 representing NM_007753 Red=Cloning site Blue=ORF Green=Tags(s)

TTTTGTAATACGACTCACTATAGGGCGGCCGGAATTCGTCGACTGGATCCGGTACCGAGGAGATCTGCC  
GCC**CGATCGCC**

ATGAGGTTCTTCTTGCTTATGGCTGTCATCTACACTACACTTGAATTGCTCCTGTCCACTTTGACAGGG  
AGAAGGTATTCGGTGTGAACTCCAGAATGAAAAGCACGCCAGTGTCTTGAAGAATTGACCCAAAGCAT  
TGAGCTCGACTTCTGGTATCCAGATGCTATCCATGATATTGCTGTGAATATGACTGTGGATTTCCGAGTT  
AGTGAGAAGGAATCTCAGACCATCCAGTCAACCTTGAACAACATAAAAATCCATTATGAAATTCTGATAC  
ATGACCTACAAGAAGAGATAGAGAAACAGTTTGTGTGAAAGATGAAATCGCAGGCAGGCACAGTTATGC  
AAAATACAATGACTGGGACAAGATTGTTTCTTGGACTGAAAAAATGTTAGAAAAACATCCTGAGATGGTT  
TCAAGGATTAATAATTGGATCAACTGTTGAAGATAATCCATTATATGTCCTCAAGATTGGGAAAAAAGATG  
GAGAAAGAAAGGCTATCTTTATGGACTGTGGCATTATGCACGTGAATGGATTTCTCCAGCTTTCTGTCA  
GTGGTTTGTCTATCAGGCAACCAAGAGTTATGGAAAAATAAAATCATGACCAAACTCTTGGACCGGATG  
AATTTTACGTTCTGCCTGTATTCAATGTAGACGGATACATTTGGTCAATGGACACAGGATCGAATGTGGA  
GAAAAACCGTTCAGGAACCAAACTCCACCTGCATTGGCACTGACCTCAACAGGAACCTTGTATGTCTC  
GTGGGACTCTTCTCCAAACACCAACCAACCATGCCTCAATGTCTACAGGGGACCTGCACCAGAGTCTGAG  
AAAGAGACAAAAGCTGTCACCAACTTCATTGCAAGCCATCTGAACTCAATCAAGGCTTATATCACTTTCC  
ATTCTACTCGCAGATGCTATTAATTCTTATGGCTACACATTCAACTGCCTCCTAACCACGAGGACCT  
ATTGAAAGTTGCAAGGATTGCCACGGATGCTCTCAACTAGATATGAAACCCGTTACATCTACGGCCCA  
ATAGCATCCACAATTTACAAGACTTCAGGCTCTTCTTAGACTGGGTTTATGACCTGGGCATCAAACACA  
CATTTGCCTTTGAGCTTCGTGATAAAGGAAAGTCTGGGTTTCTTCTCCAGAATCCCGGATAAAGCCAAC  
ATGTAAGAAACCATGCTTTCTGTCAAATTTATTGCCAAGTATATCTCAAGAATACTTCC

**ACGGTACGGCGCCGCTCGAG** - GFP Tag - GTTTAA



[View online >](#)

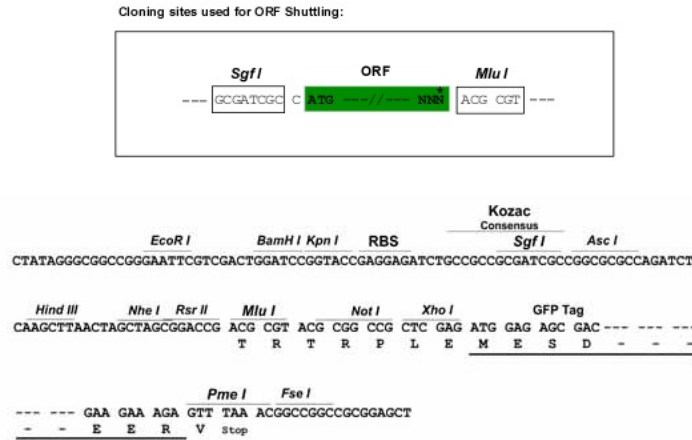
Protein Sequence: >MG226143 representing NM\_007753  
 Red=Cloning site Green=Tags(s)

MRFFLLMAVIYTTLAIAPVHFDREKVFVRVQLQNEKHASVLKNTLQSQIELDFWYPDAIHDI AVNMTVD FRV  
 SEKESQTIQSTLEQHKIHYEILIHDLQEEIEKQFDVKDEIAGRHSYAKYNDWDKIVSWTEKMLEKHP  
 SRIKIGSTVEDNPLYVLKIGKKDGERKAIFMDCGIHAREWISPAFCQWFVYQATKSYGKNKIMTKLLDRM  
 NFYVLPVFNVDGYIWSWTQDRMWRKNRSRNQNSTCIGTDLNRNFDVSWDSSPNTNKPCLNVYRGP  
 APASEKETKAVTNFIRSHLNSIKAYITFHYSYQMLLIPYGYTFKLPNHDLLKVARITDALSTRYETRYIYGP  
 IASTIYKTSGSSLDWVYDLGIKHHTFAFELRDKGKSGFLLPESRIKPTCKETMLSVKFIKYLKNTS

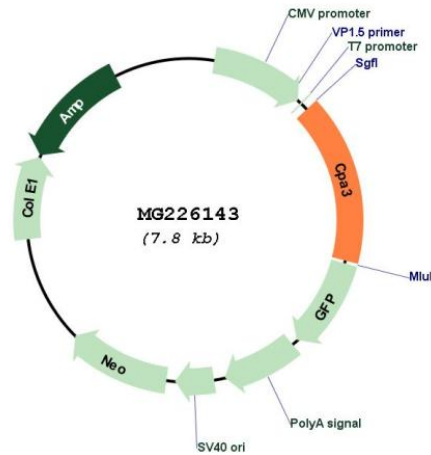
TRTRPLE - GFP Tag - V

Restriction Sites: SgfI-MluI

Cloning Scheme:



Plasmid Map:



ACCN: NM\_007753

<b>ORF Size:</b>	1251 bp
<b>OTI Disclaimer:</b>	The molecular sequence of this clone aligns with the gene accession number as a point of reference only. However, individual transcript sequences of the same gene can differ through naturally occurring variations (e.g. polymorphisms), each with its own valid existence. This clone is substantially in agreement with the reference, but a complete review of all prevailing variants is recommended prior to use. <a href="#">More info</a>
<b>OTI Annotation:</b>	This clone was engineered to express the complete ORF with an expression tag. Expression varies depending on the nature of the gene.
<b>Components:</b>	The ORF clone is ion-exchange column purified and shipped in a 2D barcoded Matrix tube containing 10ug of transfection-ready, dried plasmid DNA (reconstitute with 100 ul of water).
<b>Reconstitution Method:</b>	<ol style="list-style-type: none"><li>1. Centrifuge at 5,000xg for 5min.</li><li>2. Carefully open the tube and add 100ul of sterile water to dissolve the DNA.</li><li>3. Close the tube and incubate for 10 minutes at room temperature.</li><li>4. Briefly vortex the tube and then do a quick spin (less than 5000xg) to concentrate the liquid at the bottom.</li><li>5. Store the suspended plasmid at -20°C. The DNA is stable for at least one year from date of shipping when stored at -20°C.</li></ol>
<b>RefSeq:</b>	<a href="#">NM_007753.2</a> , <a href="#">NP_031779.1</a>
<b>RefSeq Size:</b>	1458 bp
<b>RefSeq ORF:</b>	1254 bp
<b>Locus ID:</b>	12873
<b>UniProt ID:</b>	<a href="#">P15089</a>
<b>Cytogenetics:</b>	3 6.25 cM
<b>Gene Summary:</b>	This gene encodes a member of the carboxypeptidase A family of zinc metalloproteases and preproprotein that is proteolytically processed to generate a mature protein product. This product is released by mast cells and may be involved in the degradation of endogenous proteins and the inactivation of venom-associated peptides. Homozygous knockout mice for this gene exhibit impaired mast cell development. [provided by RefSeq, Aug 2015]